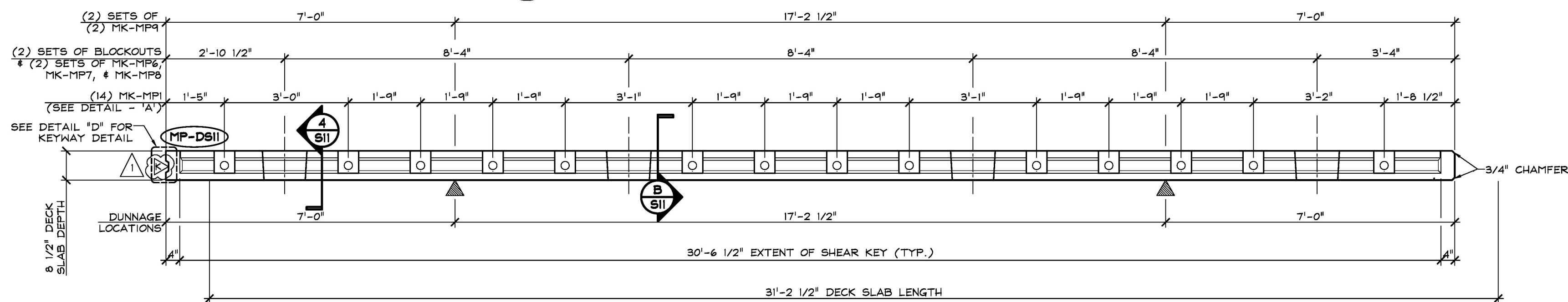
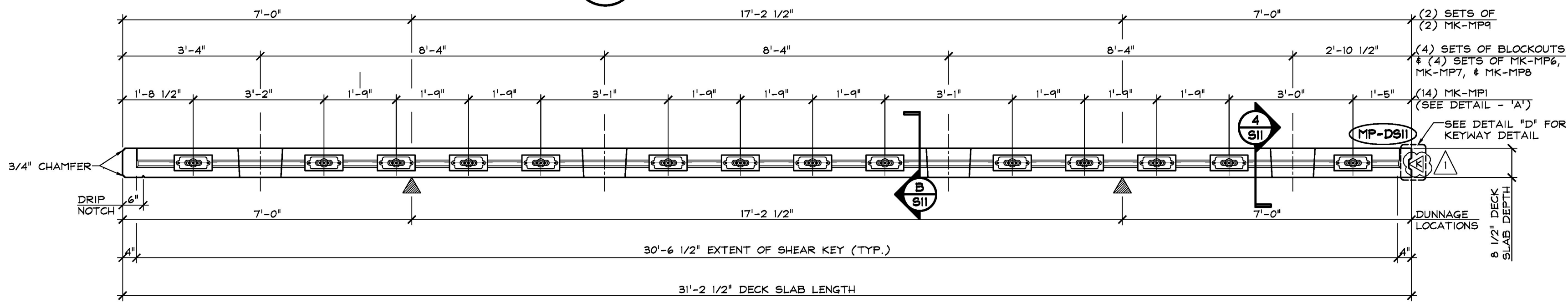


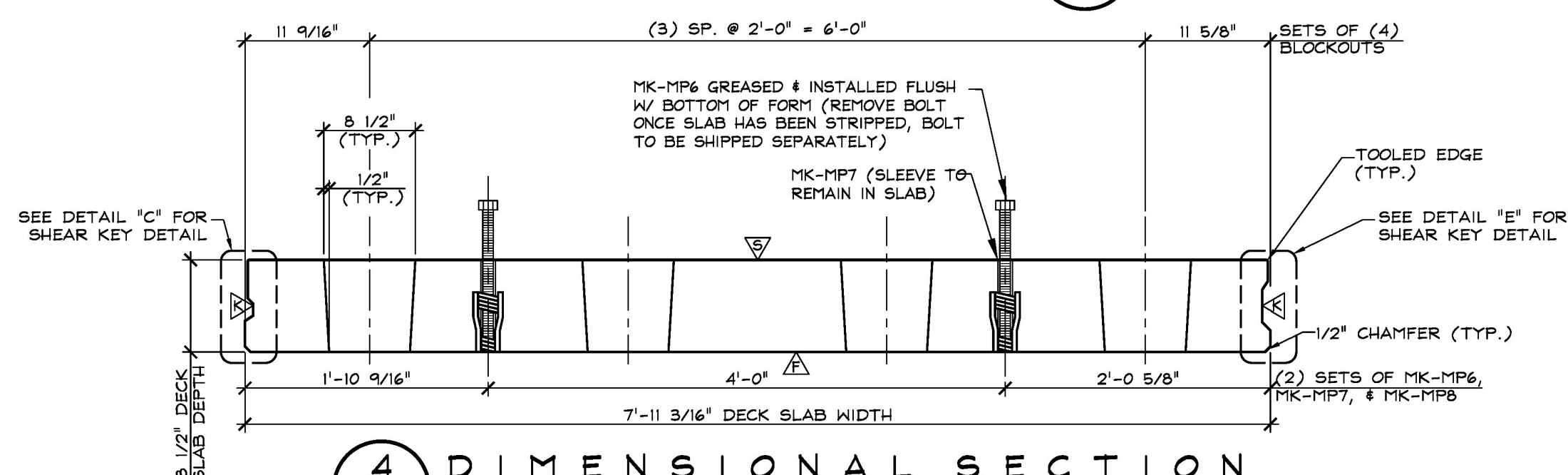
1 DIMENSIONAL PLAN VIEW IN FORM
S11 1/2" = 1'-0"



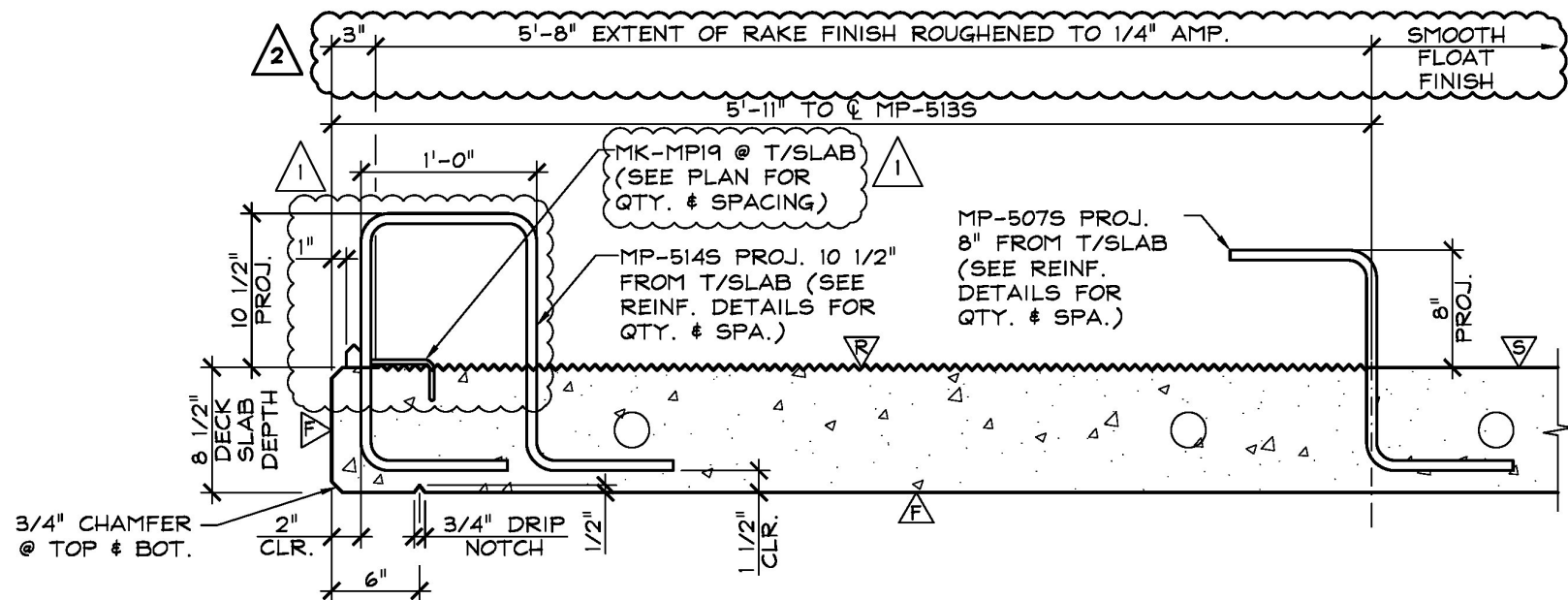
2 DIMENSIONAL ELEVATION
S11 1/2" = 1'-0"



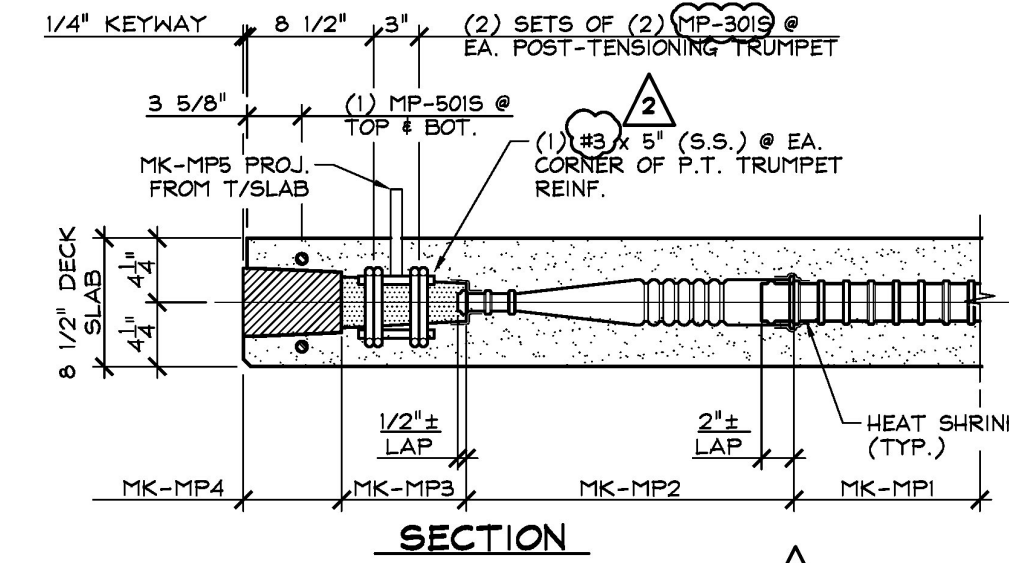
3 DIMENSIONAL ELEVATION
S11 1/2" = 1'-0"



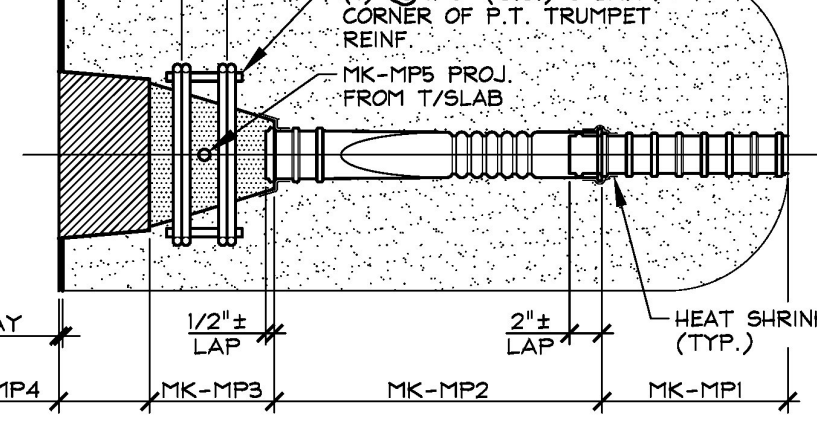
4 DIMENSIONAL SECTION
S11 1" = 1'-0"



F SECTION - "F"
S11 1/2" = 1'-0"



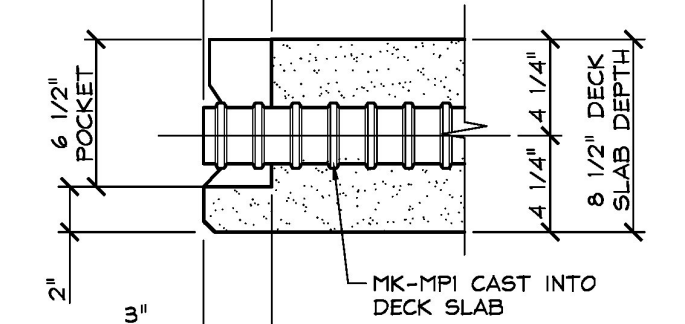
A SECTION - "A"
S11 1" = 1'-0"



B SECTION - "B"
S11 1 1/2" = 1'-0"



C SECTION - "C"
S11 3" = 1'-0"



D SECTION - "D"
S11 3" = 1'-0"



E SECTION - "E"
S11 3" = 1'-0"

SHOP NOTE:
f_c = 5,000 PSI
f_{ci} = 4,000 PSI
MIX # 445 M5CC (NO DCI)

△ DENOTES FORM FINISH
△ DENOTES SMOOTH FLOAT FINISH
△ DENOTES ROUGHENED FINISH (SEE GENERAL NOTE #5, SHEET "F")
△ DENOTES RAKE FINISH ROUGHENED TO 1/4" AMPLITUDE

SHOP NOTE:
SEE DRAWING "DS11" FOR REINFORCING INFORMATION

MATERIAL LIST / DECK SLAB			
ITEM	MARK	DESCRIPTION	QTY.
1			
2	MK-MP1	GT1 2 3/8" X 5'-1 1/2" LONG CORRUGATED PT DUCT (SUPPLIED BY OTHERS)	14
3	MK-MP2	GT1 1" X 3' TRANSITION PIECE (BY OTHERS)	14
4	MK-MP3	POST-TENSIONING TRUMPET (DS1 4 - 0.6" FLAT ANCHOR (GALV.) W/ HARDWARE (SUPPLIED BY OTHERS)	14
5	MK-MP4	DS1 POCKET FORMER (SUPPLIED BY OTHERS)	14
6	MK-MP5	3/4" X 6" NPT PIPE NIPPLE (SUPPLIED BY OTHERS)	14
7	MK-MP6	1" X 1'-2" LEVELING BOLT (COIL THREAD)	8
8	MK-MP7	1" O.D. 6 1/2" PVC PIPE SLEEVE	8
9	MK-MP8	DAYTON 1" Ø F-56 EXPANDED COIL INSERT (2-STRUT) (GALV.)	8
10	MK-MP9	4T X 5 3/4" SHIFT LIFT LIFTER (GALV.) (DOMESTIC)	4
11	MK-MP10	DAYTON C-24 TYPE 4-APR DECK FORM HANGER (GALV.)	2
12		HEAT SHRINK (SUPPLIED BY OTHERS)	AS REQ'D
13	MP-3015	#3 BENT BAR (STAINLESS STEEL)	56
14	MP-5155	#5 BENT BAR (STAINLESS STEEL)	2
		#5 X 0'-5" (STAINLESS STEEL)	56

△ 12-15-17 REVISIONS SUBMITTAL #2 COMMENTS
△ 11-2-17 REVISIONS SUBMITTAL #1 COMMENTS

<p>APPROVAL STAMP: X</p> <p>REVIEW AND RESUBMIT NOT REVIEWED</p> <p>Date: 2/14/18</p> <p>By: <i>[Signature]</i></p> <p>This review by Stantec Consulting Services Inc. is for the sole purpose of ascertaining compliance with the general design concept. This review shall not constitute an approval of the design or construction. Responsibility for which shall remain with the Contractor. Submitting same, and such review shall not relieve the Contractor of his responsibility for errors or omissions in the shop drawing or of his responsibility for meeting all requirements of the Contract Documents. The contractor is responsible for dimensions to be confirmed and correlated at the job site, for information that pertains solely to the fabrication processes or to techniques of construction and installation and for coordination of the work of all contractors.</p>	<p>J.P. CARRARA & SONS INC. Precast & Prestress Manufacturer 2464 GEE ST., WOODBURY, VERMONT 05753 Phone: (802)388-6361 Fax: (802)388-8010</p> <p>Stantec CONSULTING SERVICES INC. OF VERMONT AGENCY OF TRANSPORTATION COUNTY OF WASHINGTON</p> <p>TOWN OF EAST MONTPELIER VT ROUTE 14, MINOR ARTERIAL BRIDGE NO.: 68 PROJECT NO.: BRF 037-1 (7)</p> <p>PRECAST CONCRETE DECK SLAB DETAILS</p>	<p>CCS CONSTRUCTORS, INC. CONTRACTOR MORRISVILLE, VERMONT</p> <p>DATE: SEPT. 14, 2017 SCALE: NOTED CHKD: K.P. DFTM: A.S. JOB NO: 23515-017 DWG. NO: S11</p>
--	--	--