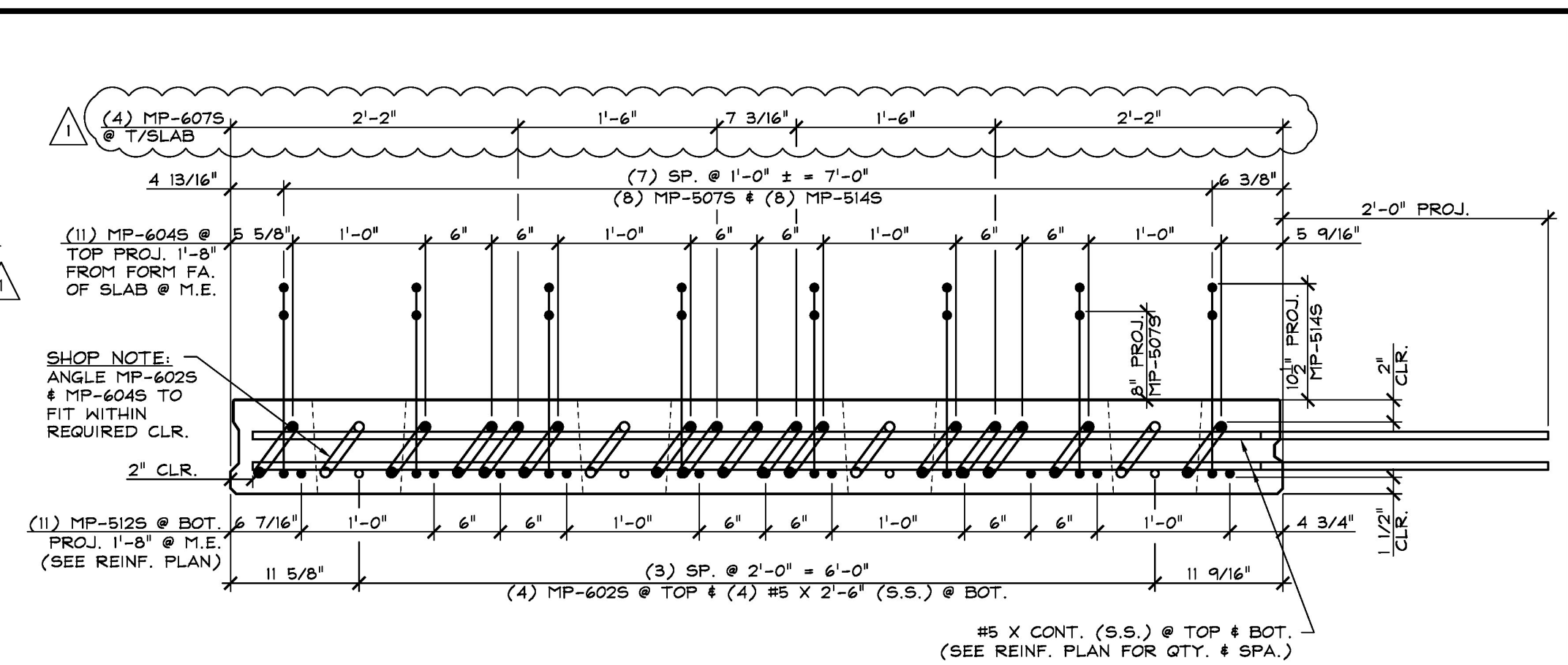
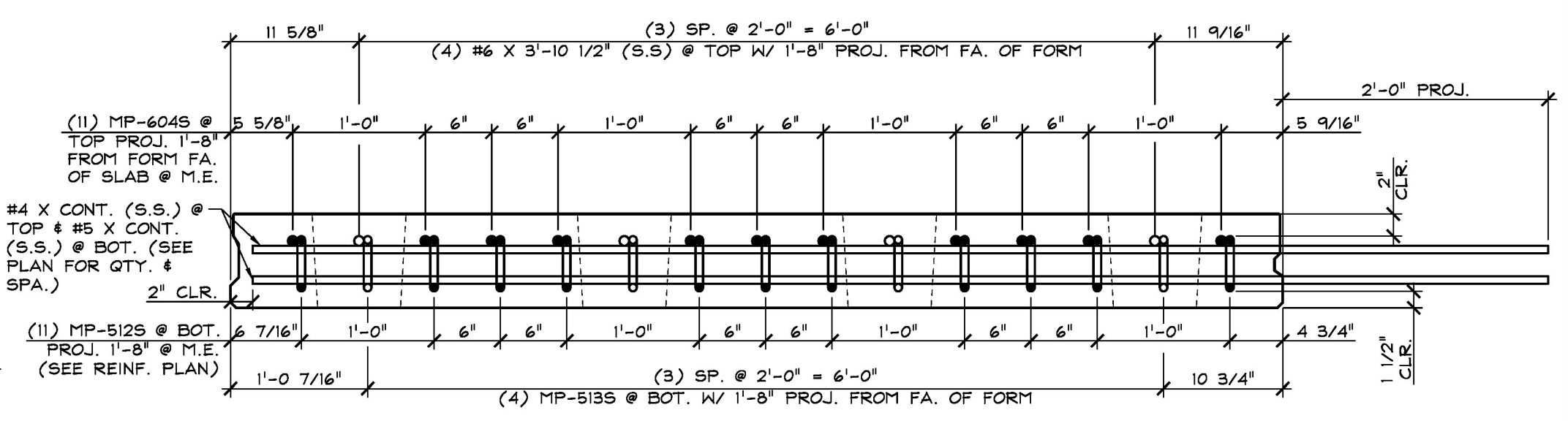


1 REINFORCING PLAN VIEW IN FORM  
S11.1 @ 1/2" = 1'-0"



4 REINFORCING SECTION  
S11.1 @ BEAM N.M.E. 1" = 1'-0"



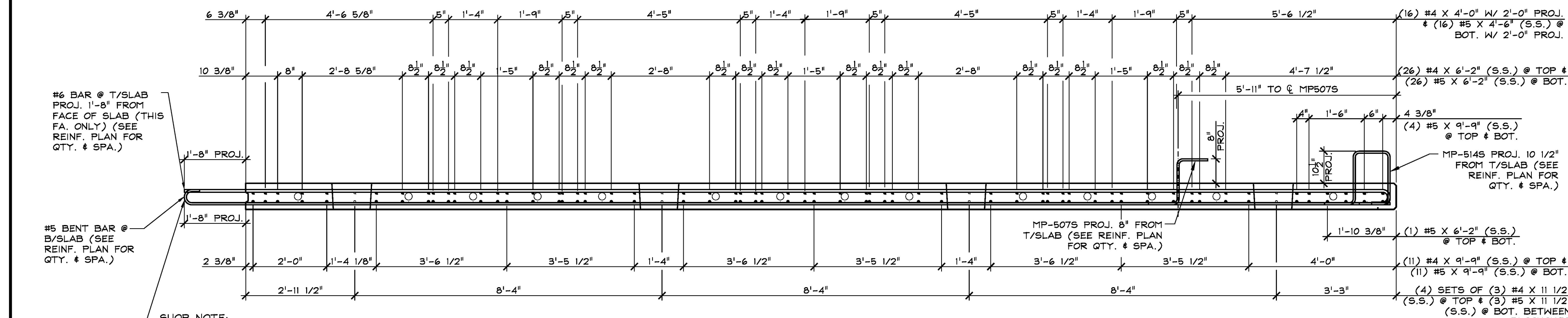
5 REINFORCING SECTION  
S11.1 @ BEAM M.E. 1" = 1'-0"

SHOP NOTE:

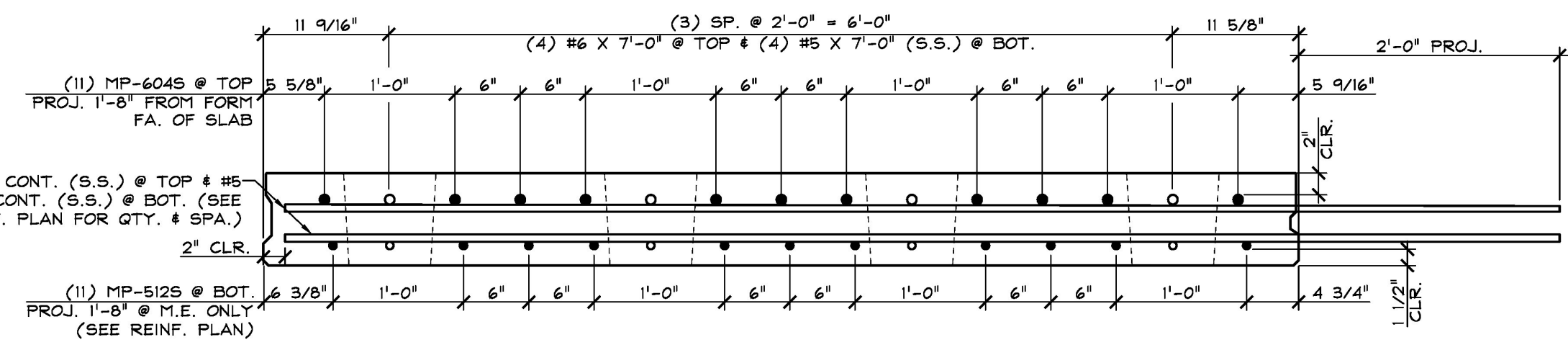
$f_c = 5,000$  PSI  
 $f_{ci} = 4,000$  PSI  
MIX # 445 M3CC (NO DCI)

MARK: MP-DS11 QTY.: 1 WT.: 12.62 T VOL.: 6.23 cy

MATERIAL LIST / DECK SLAB			
ITEM	MARK	DESCRIPTION	QTY.
1			
2	MP-5075	#5 BENT BAR (STAINLESS STEEL)	8
3	MP-5125	#5 BENT BAR (STAINLESS STEEL)	11
4	MP-5135	#5 BENT BAR (STAINLESS STEEL)	4
5	MP-5145	#5 BENT BAR (STAINLESS STEEL)	8
6	MP-5155	#5 BENT BAR (STAINLESS STEEL)	8
7	MP-6025	#6 BENT BAR (STAINLESS STEEL)	4
8	MP-6045	#6 BENT BAR (STAINLESS STEEL)	11
9/11	MP-6075	#6 BENT BAR (STAINLESS STEEL)	4
10			
11		#4 X 0'-11 1/2" (STAINLESS STEEL)	12
12		#4 X 4'-0" (STAINLESS STEEL)	14
13		#4 X 6'-2" (STAINLESS STEEL)	14
14		#4 X 6'-5" (STAINLESS STEEL)	12
15		#4 X 9'-9" (STAINLESS STEEL)	11
16		#5 X 0'-11 1/2" (STAINLESS STEEL)	12
17		#5 X 2'-6" (STAINLESS STEEL)	4
18		#5 X 4'-6" (STAINLESS STEEL)	16
19		#5 X 6'-2" (STAINLESS STEEL)	18
20		#5 X 6'-5" (STAINLESS STEEL)	12
21		#5 X 7'-0" (STAINLESS STEEL)	12
22		#5 X 9'-9" (STAINLESS STEEL)	19
23		#6 X 3'-10 1/2" (STAINLESS STEEL)	4
24		#6 X 7'-0" (STAINLESS STEEL)	12



2 REINFORCING ELEVATION  
S11.1 @ 1/2" = 1'-0"



3 REINFORCING SECTION  
S11.1 @ MIDSPAN 1" = 1'-0"

APPROVED: Approval of drawings and/or procedures indicates concurrence with information presented and does not relieve the Contractor of responsibility for compliance with all specifications and code requirements.

REVISIONS SUBMITTAL # COMMENTS

APPROVAL STAMP:

APPROVED AS NOTED

REVISE AND RETURN

NOT REVIEWED

Date: 2/14/18

By:

This review by Stantec Consulting Services Inc. is for the sole purpose of ascertaining conformance with the general design concept. This review shall not mean that Stantec Consulting Services Inc. approves the detail design inherent in the shop drawings, responsibility for which shall remain with the Contractor. Submitting same, and such review shall not relieve the Contractor of his responsibility for errors or omissions in the shop drawings or in this responsibility for meeting all requirements in our Contract Documents. The contractor is responsible for dimensions to be confirmed and correlated at the job site, for information that pertains solely to the fabrication processes or to techniques of construction and installation and for coordination of the work of all subtrades.

J.P. CARRARA & SONS INC.  
Precast & Prestress Manufacturer  
2644 GSE STR., WOODBURY, VERMONT 05753 Phone: (802)388-5361 Fax: (802)388-9010

CCS CONSTRUCTORS, INC.  
CONTRACTOR  
MORRISVILLE, VERMONT

STATE OF VERMONT AGENCY OF TRANSPORTATION  
COUNTY OF WASHINGTON

DATE: SEPT. 14, 2017  
SCALE: NOTED  
CHKD: K.P. DFTM: A.S.  
JOB NO: 23515-017  
DWG. NO: S11.1

TOWN OF EAST MONTPELIER  
VT ROUTE 14, MINOR ARTERIAL  
BRIDGE NO.: 68 PROJECT NO.: BRF 037-1 (7)  
PRECAST CONCRETE DECK SLAB  
DETAILS