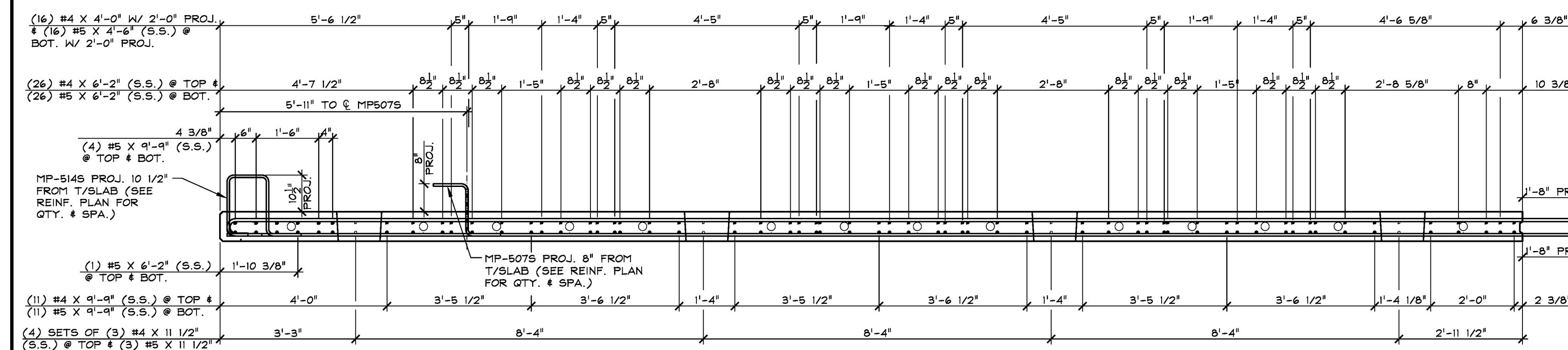
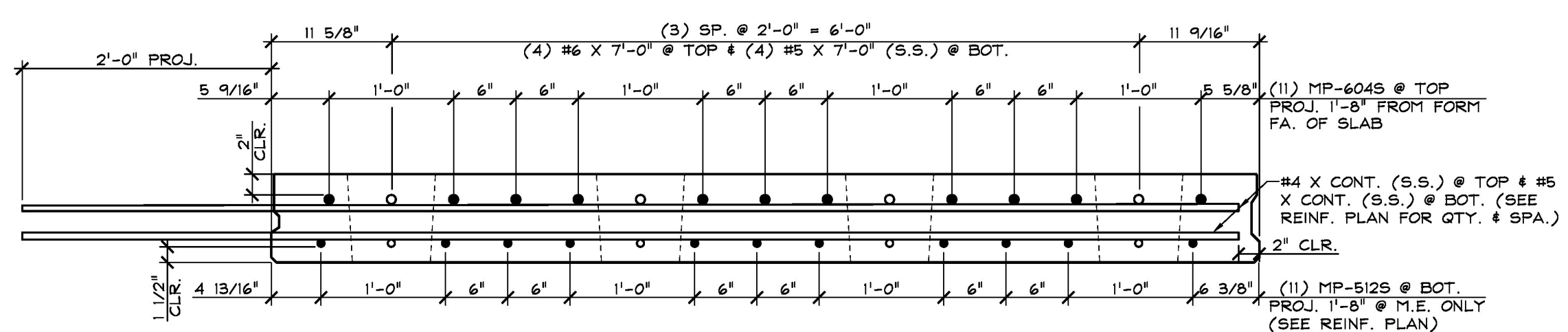


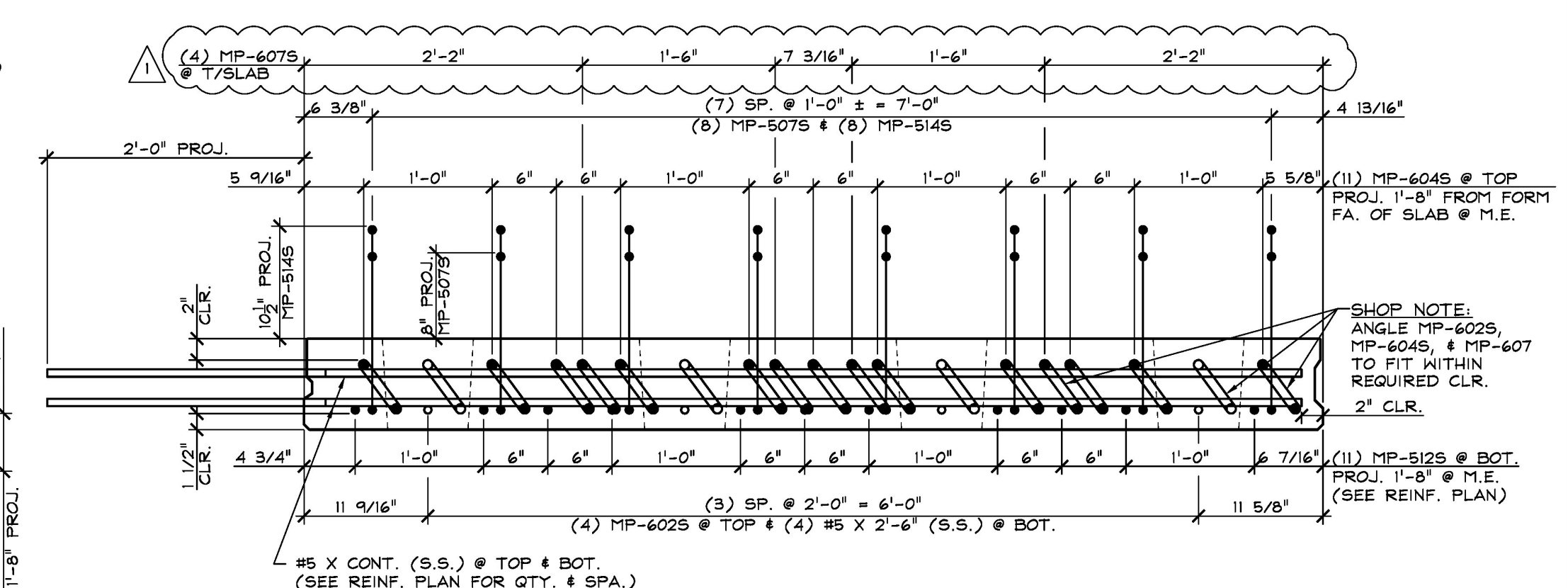
1 REINFORCING PLAN VIEW IN FORM  
SB.1 1/2" = 1'-0"



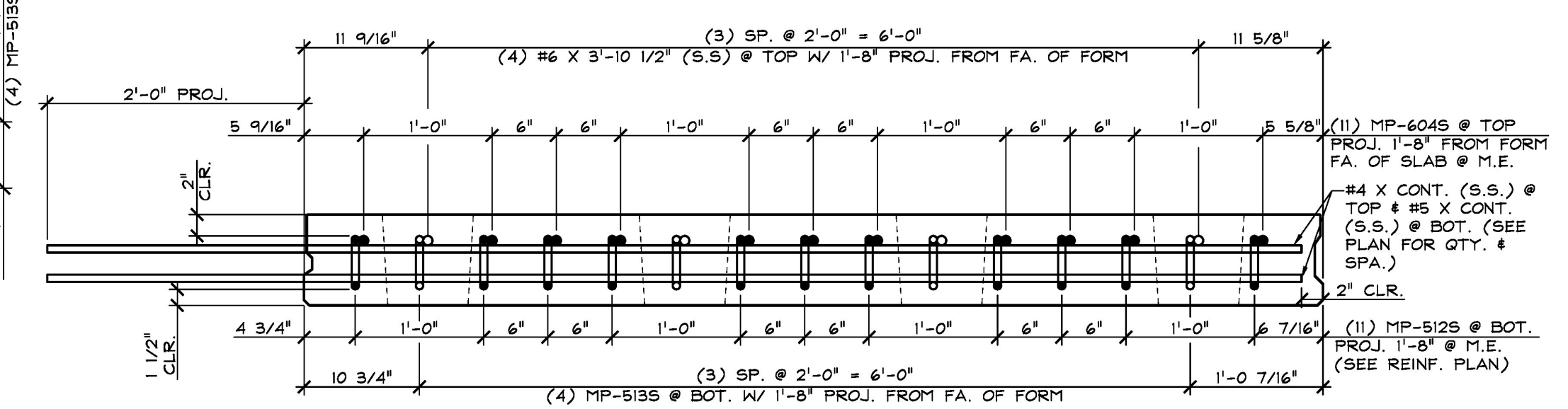
2 REINFORCING ELEVATION  
SB.1 1/2" = 1'-0"



3 REINFORCING SECTION  
SB.1 @ MIDSPAN 1" = 1'-0"



4 REINFORCING SECTION  
SB.1 @ BEAM N.M.E. 1" = 1'-0"



5 REINFORCING SECTION  
SB.1 @ BEAM M.E. 1" = 1'-0"

SHOP NOTE:

f<sub>c</sub> = 5,000 PSI  
f<sub>t</sub> = 4,000 PSI  
MIX # 445 MSCC (NO DCI)

MARK: MP-DSB	QTY.: 1	WT.: 12.62 T	VOL.: 6.23 cy
--------------	---------	--------------	---------------

MATERIAL LIST / DECK SLAB			
ITEM	MARK	DESCRIPTION	QTY.
1			
2	MP-5075	#5 BENT BAR (STAINLESS STEEL)	8
3	MP-5125	#5 BENT BAR (STAINLESS STEEL)	11
4	MP-5135	#5 BENT BAR (STAINLESS STEEL)	4
5	MP-5145	#5 BENT BAR (STAINLESS STEEL)	8
6	MP-6025	#6 BENT BAR (STAINLESS STEEL)	4
7	MP-6045	#6 BENT BAR (STAINLESS STEEL)	11
8	MP-6075	#6 BENT BAR (STAINLESS STEEL)	4
9			
10		#4 X 0'-11 1/2" (STAINLESS STEEL)	12
11		#4 X 4'-0" (STAINLESS STEEL)	16
12		#4 X 6'-2" (STAINLESS STEEL)	13
13		#4 X 6'-5" (STAINLESS STEEL)	13
14		#4 X 9'-9" (STAINLESS STEEL)	11
15		#5 X 0'-11 1/2" (STAINLESS STEEL)	12
16		#5 X 2'-6" (STAINLESS STEEL)	4
17		#5 X 4'-6" (STAINLESS STEEL)	16
18		#5 X 6'-2" (STAINLESS STEEL)	17
19		#5 X 6'-5" (STAINLESS STEEL)	13
20		#5 X 7'-0" (STAINLESS STEEL)	12
21		#5 X 9'-9" (STAINLESS STEEL)	19
22		#6 X 3'-10 1/2" (STAINLESS STEEL)	4
23		#6 X 7'-0" (STAINLESS STEEL)	12

APPROVED: Approval of drawings and/or procedures indicates concurrence with the information presented and does not relieve the Contractor or Fabricator of compliance with all specifications and code requirements.

APPROVED AS NOTED

REVISE AND RESUBMIT

NOT REVIEWED

Date: 2/14/18

By: *[Signature]*

This review by Stantec Consulting Services Inc. is for the sole purpose of ascertaining conformance with the general design concept. This review shall not mean that Stantec is responsible for the design or construction of the project. The Contractor shall retain the responsibility for which shall remain with the Contractor. Submitting same, and such review shall not relieve the Contractor of his responsibility for errors or omissions in the shop drawing or of his responsibility for meeting all requirements of the Contract Documents. The contractor is responsible for dimensions to be confirmed and correlated at the job site, for information that pertains solely to the fabrication process or to techniques of construction and installation and for coordination of the work of all subtrades.

11-2-17 REVISIONS SUBMITTAL #1 COMMENTS

APPROVAL STAMP:

**Stantec**

**J.P. CARRARA & SONS INC.**  
Precast & Prestress Manufacturer  
2464 GISE ST., WOODBURY, VERMONT 05753 Phone: (802)388-5361 Fax: (802)388-9010

**CCS CONSTRUCTORS, INC.**  
CONTRACTOR  
MORRISVILLE, VERMONT

STATE OF VERMONT AGENCY OF TRANSPORTATION  
COUNTY OF WASHINGTON

TOWN OF EAST MONTPELIER  
VT ROUTE 14, MINOR ARTERIAL  
BRIDGE NO.: 68 PROJECT NO.: BRF 037-1 (7)

PRECAST CONCRETE DECK SLAB  
DETAILS

DATE: SEPT. 14, 2017  
SCALE: NOTED  
CHKD: K.P. DFTM: A.S.  
JOB NO: 23515-017  
DWG. NO: **S8.1**