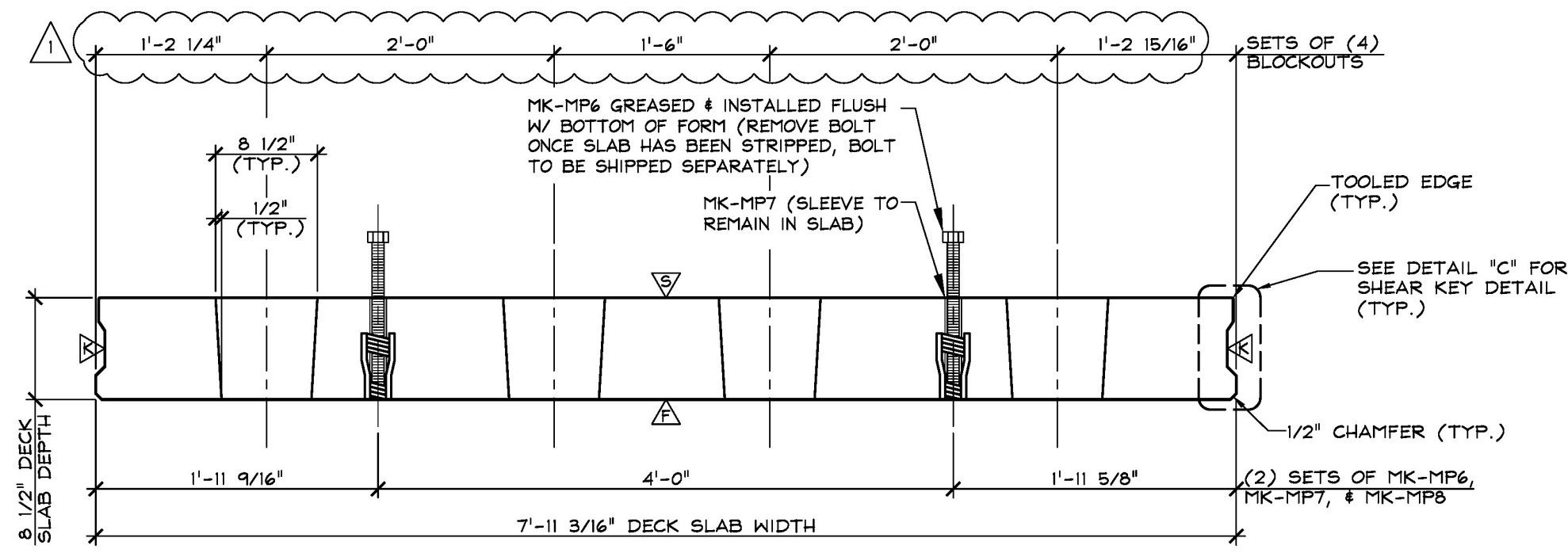
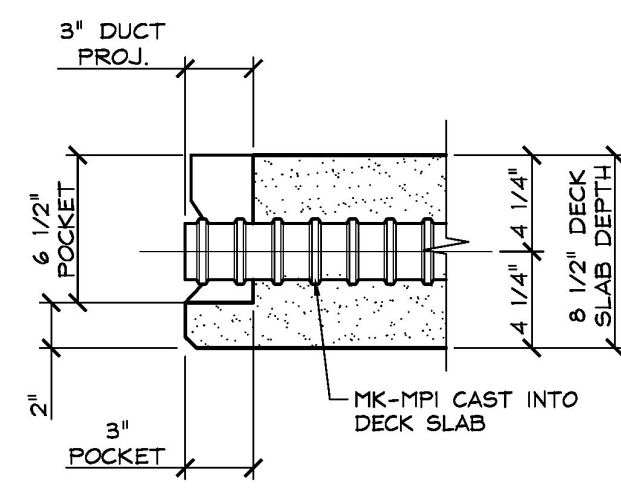


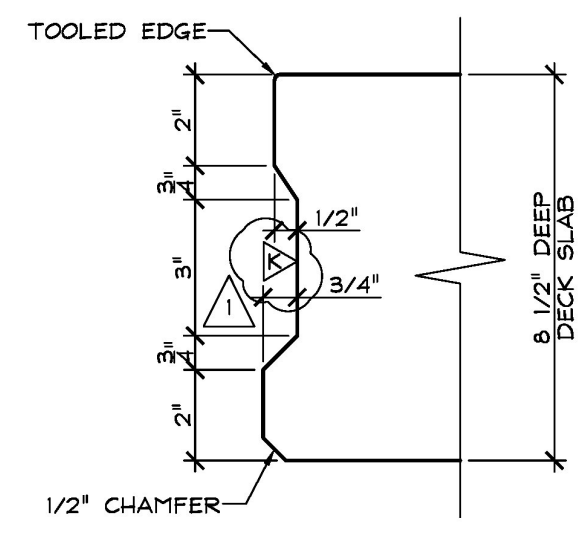
1 DIMENSIONAL PLAN VIEW IN FORM
S6
1/2" = 1'-0"



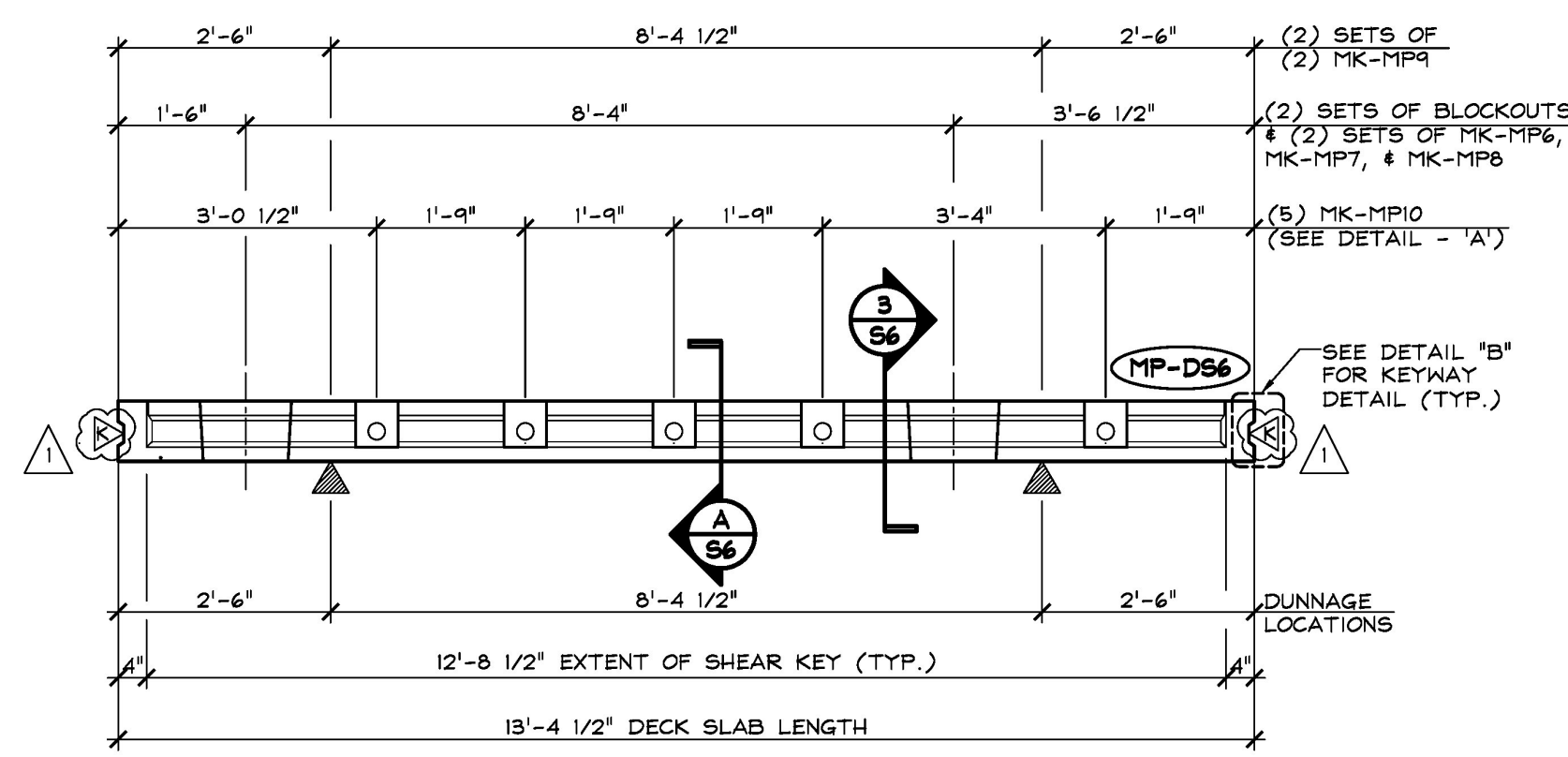
3 DIMENSIONAL SECTION
S6
1" = 1'-0"



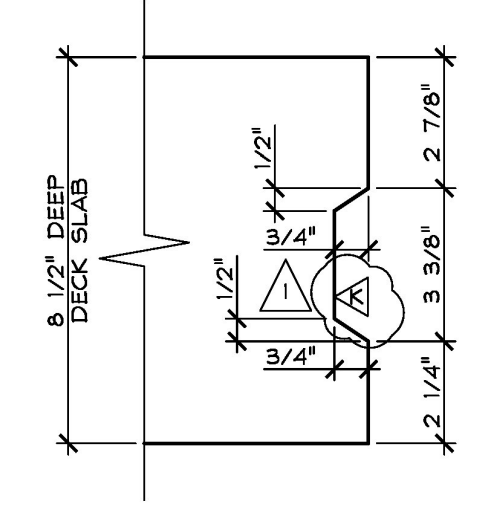
A SECTION - "A"
S6
1 1/2" = 1'-0"



C SECTION - "C"
S6
3" = 1'-0"



2 DIMENSIONAL ELEVATION
S6
1/2" = 1'-0"



B SECTION - "B"
S6
3" = 1'-0"

- △ DENOTES FORM FINISH
- △ DENOTES SMOOTH FLOAT FINISH
- △ DENOTES ROUGHENED FINISH (SEE GENERAL NOTE #5, SHEET 'F1')
- △ DENOTES RAKE FINISH ROUGHENED TO 1/4" AMPLITUDE

SHOP NOTE:
F_c = 5,000 PSI
F_t = 3,000 PSI
MIX = 445 MSCC (NO DCI)

SHOP NOTE:
SEE DRAWING 'DS6.1' FOR REINFORCING INFORMATION

MARK: MP-DS6	QTY.: 1	WT.: 5.37 T	VOL.: 2.66 cy
MATERIAL LIST / DECK SLAB			
ITEM	MARK	DESCRIPTION	QTY.
1			
2	MK-MP6	1 1/2" X 1'-2" LEVELING BOLT (COIL THREAD)	4
3	MK-MP7	1 3/8" O.D. & 1/2" PVC PIPE SLEEVE	4
4	MK-MP8	DAYTON 1" Φ F-56 EXPANDED COIL INSERT (2-STRUT) (GALV.)	4
5	MK-MP9	4T 5 3/4" X SWIFT LIFT LIFTER (GALV.) (DOMESTIC)	4
6	MK-MPI0	GT1 2 3/8" Φ X 7'-11 3/16" LONG CORRUGATED PT DUCT (SUPPLIED BY OTHERS)	5

APPROVED AS NOTED REVISE AND RESUBMIT NOT REVIEWED Date: 2/14/18 By: <i>[Signature]</i>	APPROVAL STAMP: J.P. CARRARA & SONS INC. Precast & Prestress Manufacturer 7464 GEE ST., MOULBURY, VERMONT 05753 Phone: (802)388-6361 Fax: (802)388-9010	CCS CONSTRUCTORS, INC. CONTRACTOR MORRISVILLE, VERMONT
STATE OF VERMONT AGENCY OF TRANSPORTATION COUNTY OF WASHINGTON		DATE: SEPT. 14, 2017 SCALE: NOTED
TOWN OF EAST MONTPELIER VT ROUTE 14, MINOR ARTERIAL BRIDGE NO.: 68 PROJECT NO.: BRF 037-1 (7)		CHKD: K.P. DFTM: A.S. JOB NO: 23515-017
PRECAST CONCRETE DECK SLAB DETAILS		DWG. NO: S6

11-2-17 REVISIONS SUBMITTAL #1 COMMENTS

This review by Stantec Consulting Services Inc. is for the sole purpose of ascertaining conformance with the general design concept. This review shall not mean that Stantec Consulting Services Inc. assumes the design liability for the design or construction of the work of all subtrades.