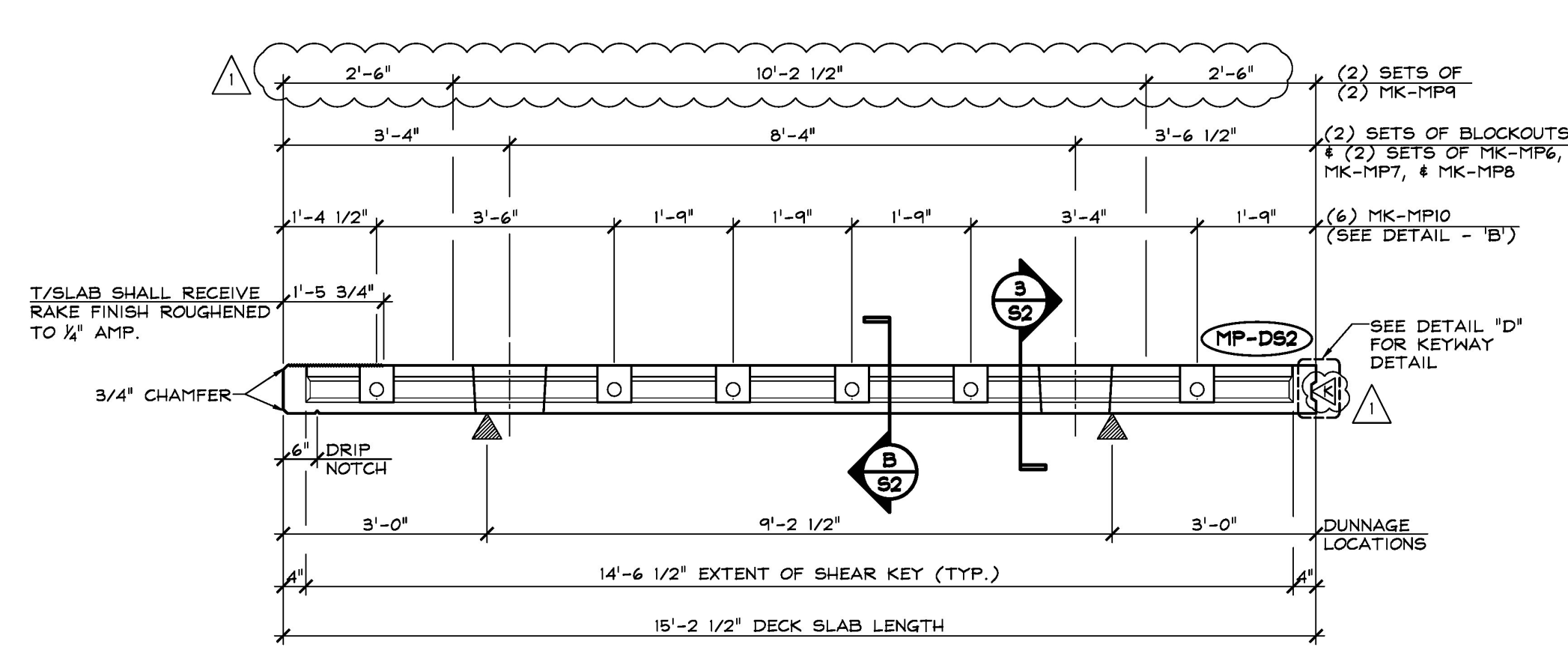
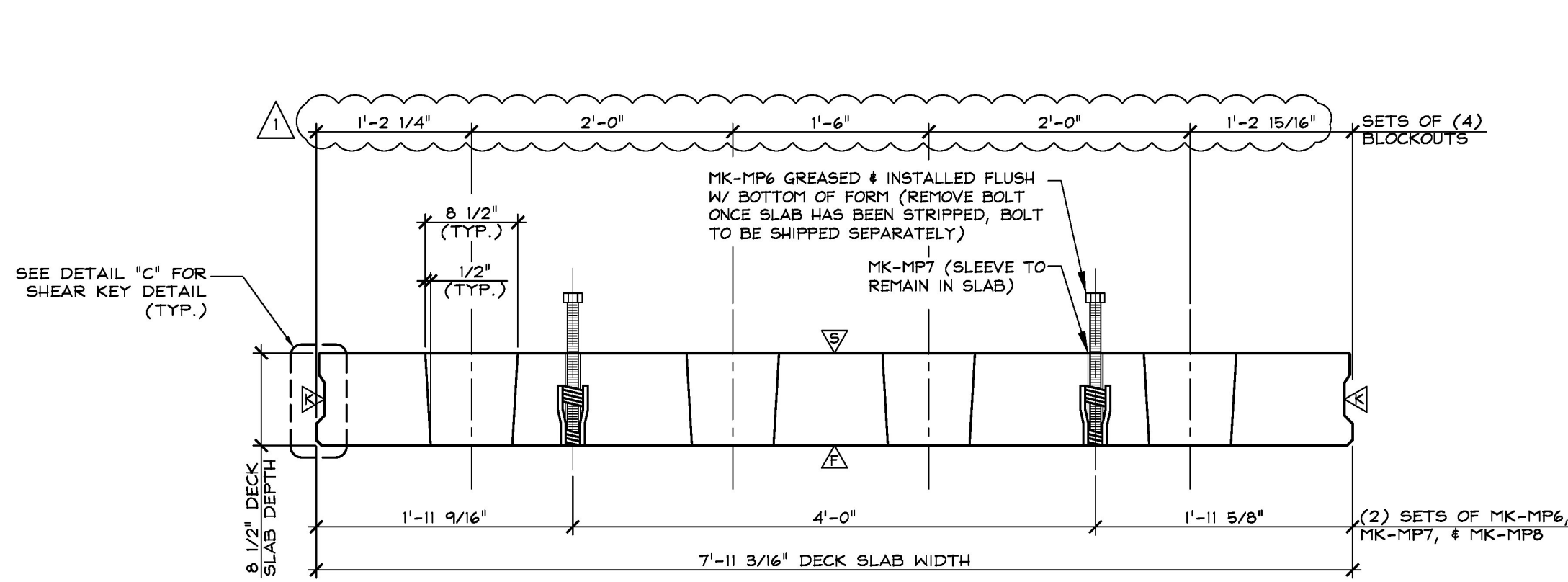


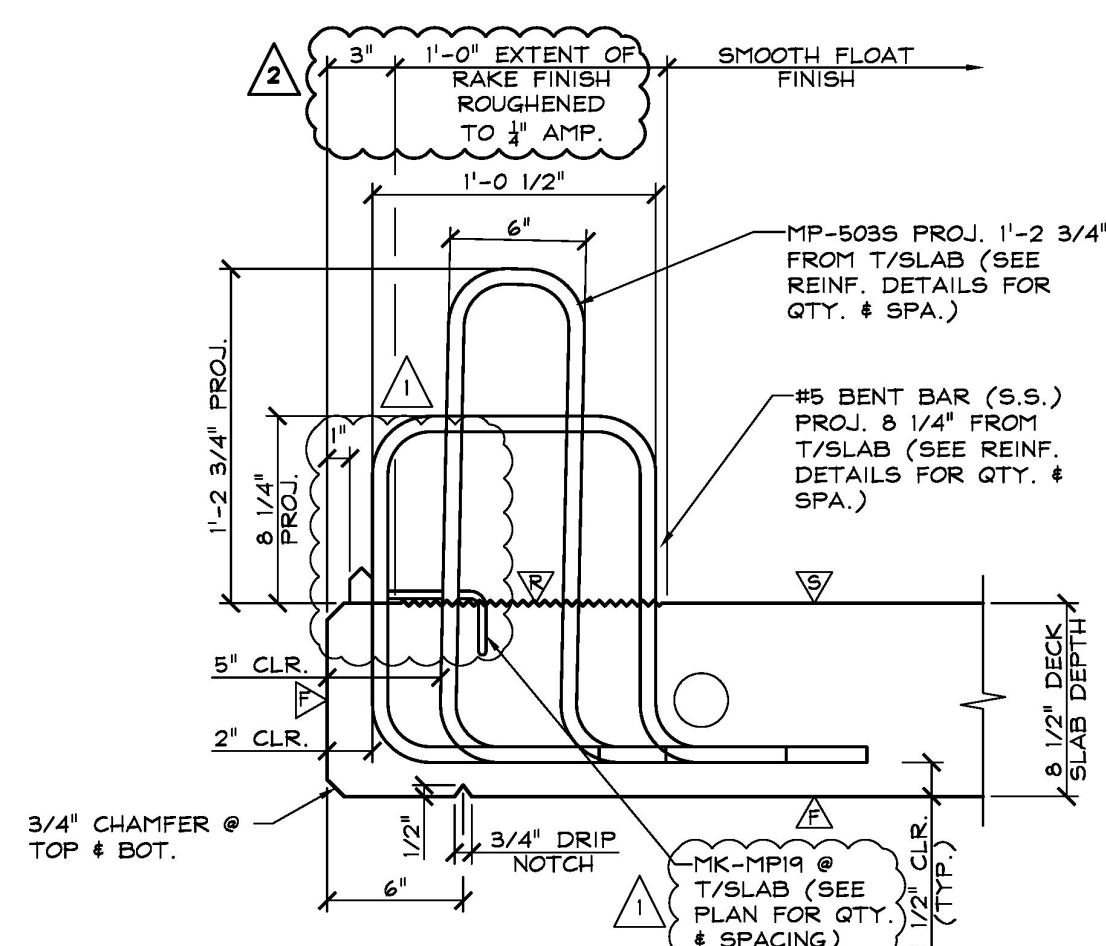
**1 DIMENSIONAL PLAN VIEW IN FORM**  
S2 1/2" = 1'-0"



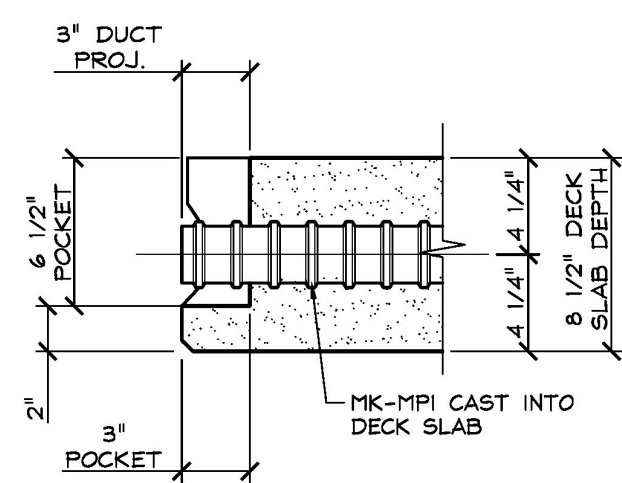
**2 DIMENSIONAL ELEVATION**  
S2 1/2" = 1'-0"



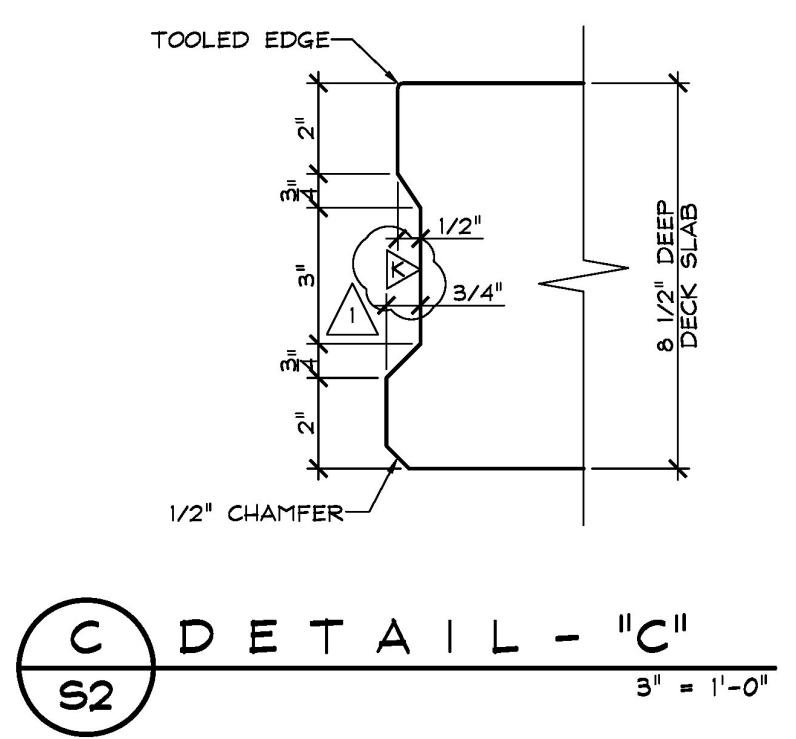
**3 DIMENSIONAL SECTION**  
S2 1" = 1'-0"



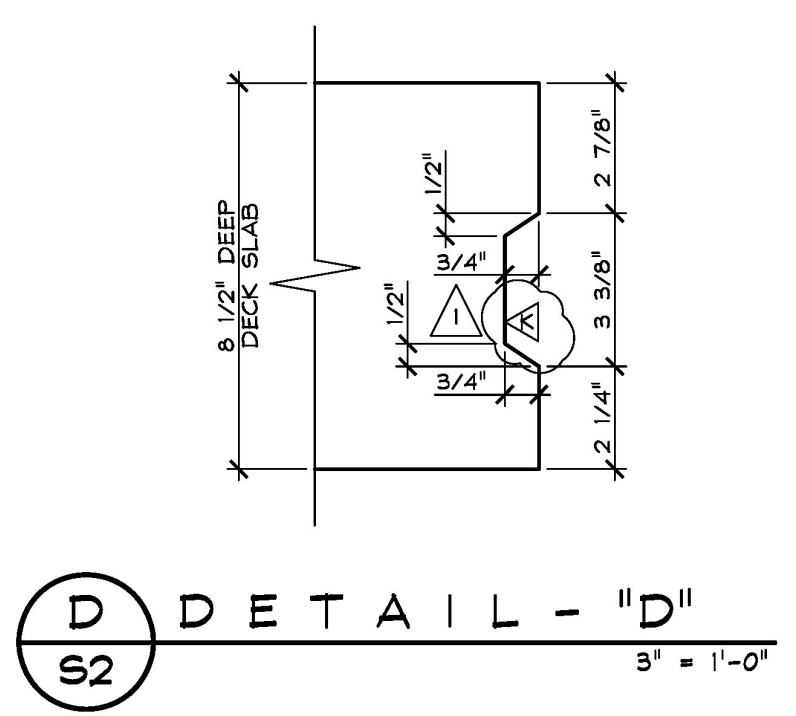
**A SECTION - 'A'**  
S2 1 1/2" = 1'-0"



**B DETAIL - 'B'**  
S2 1 1/2" = 1'-0"



**C DETAIL - 'C'**  
S2 3" = 1'-0"



**D DETAIL - 'D'**  
S2 3" = 1'-0"

- ▲ DENOTES FORM FINISH
- ▲ DENOTES SMOOTH FLOAT FINISH
- ▲ DENOTES ROUGHENED FINISH (SEE GENERAL NOTE #5, SHEET 'F')
- ▲ DENOTES RAKE FINISH ROUGHENED TO 1/4" AMPLITUDE

**SHOP NOTE:**  
f'c = 5,000 PSI  
f'c = 3,000 PSI  
MIX # 445 M5CC (NO DCl)

**SHOP NOTE:**  
SEE DRAWING 'S2' FOR REINFORCING INFORMATION

| MARK: MP-DS2              | QTY.: 14 | WT.: 6.15 T   | VOL.: 3.03 cy |
|---------------------------|----------|---|---------------|
| MATERIAL LIST / DECK SLAB |          |   |               |
| ITEM                      | MARK     | DESCRIPTION   | QTY.          |
| 1                         |          |   |               |
| 2                         | MK-MP6   | 1" x 1'-2" LEVELING BOLT (COIL THREAD)                                | 4             |
| 3                         | MK-MP7   | 1 3/8" O.D. & 1/2" PVC PIPE SLEEVE                                    | 4             |
| 4                         | MK-MP8   | DAYTON 1" x 56 EXPANDED COIL INSERT (2-STRUT) (GALV.)                 | 4             |
| 5                         | MK-MP9   | 4T X 5 3/4" SHIFT LIFTER (GALV.) (DOMESTIC)                           | 4             |
| 6                         | MK-MP10  | 4T 2 3/8" x 7'-11 3/16" LONG CORRUGATED PT. DUCT (SUPPLIED BY OTHERS) | 6             |
| 7                         | MK-MP19  | DAYTON C-24 TYPE 4-APR DECK FORM HANGER (GALV.)                       | 2             |

▲ 12-15-17 REVISIONS SUBMITTAL #2 COMMENTS  
▲ 11-2-17 REVISIONS SUBMITTAL #1 COMMENTS

APPROVED: Approval of drawings and/or procedures indicates concurrence with the information presented and does not relieve the Contractor or fabricator of compliance with all specifications and code requirements.

APPROVED AS NOTED

REVISE AND RESUBMIT

NOT REVIEWED

Date: 2/14/18

By: *[Signature]*

This review by Stantec Consulting Services Inc. is for the sole purpose of ascertaining that the drawings conform to the specifications and code requirements. Stantec Consulting Services Inc. does not assume any liability for the design or construction of the project. The Contractor is responsible for meeting all requirements of the Contract Documents. The contractor is responsible for dimensions to be confirmed and correlated at the job site, for information that pertains solely to the fabrication processes or to techniques of construction and installation and for coordination of the work of all subtrades.

APPROVAL STAMP:

**Stantec**

**J.P. CARRARA & SONS INC.**  
Precast & Prestress Manufacturer  
2644 GSE STR., WOODBURY, VERMONT 05753 Phone: (802)388-6361 Fax: (802)388-9010

**CCS CONSTRUCTORS, INC.**  
CONTRACTOR  
MORRISVILLE, VERMONT

**STATE OF VERMONT AGENCY OF TRANSPORTATION**  
COUNTY OF WASHINGTON

DATE: SEPT. 14, 2017  
SCALE: NOTED

**TOWN OF EAST MONTPELIER**  
VT ROUTE 14, MINOR ARTERIAL  
BRIDGE NO.: 68 PROJECT NO.: BRF 037-1 (7)

CHKD: K.P. DFTM: A.S.  
JOB NO: 23515-017

**PRECAST CONCRETE DECK SLAB DETAILS**  
DWG. NO: **S2**