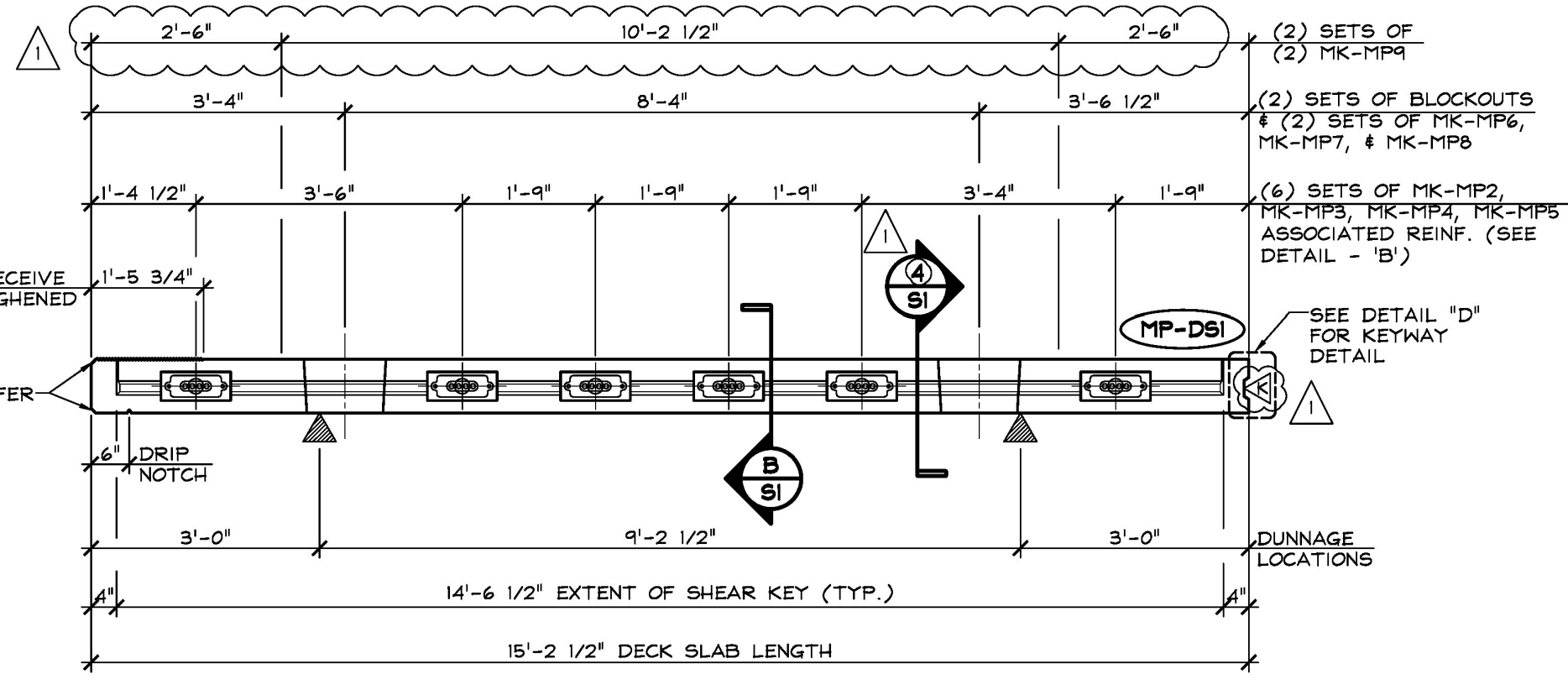
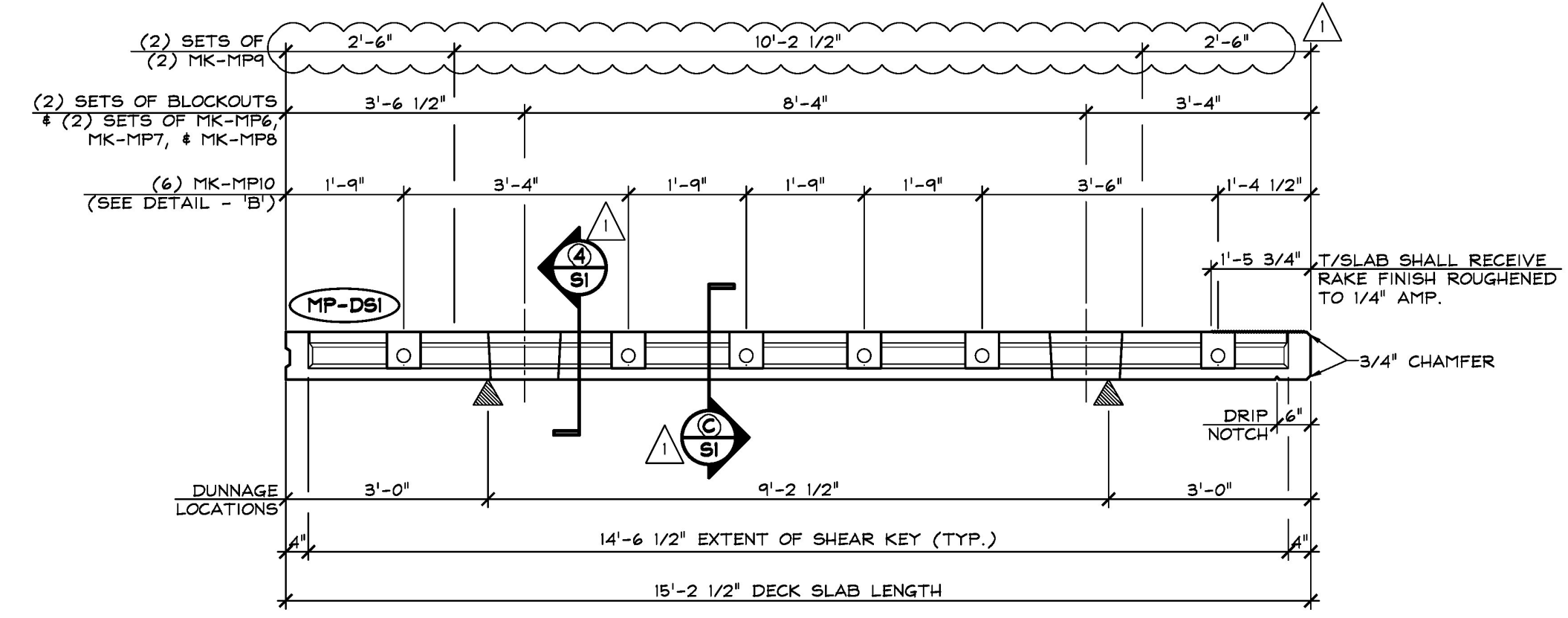


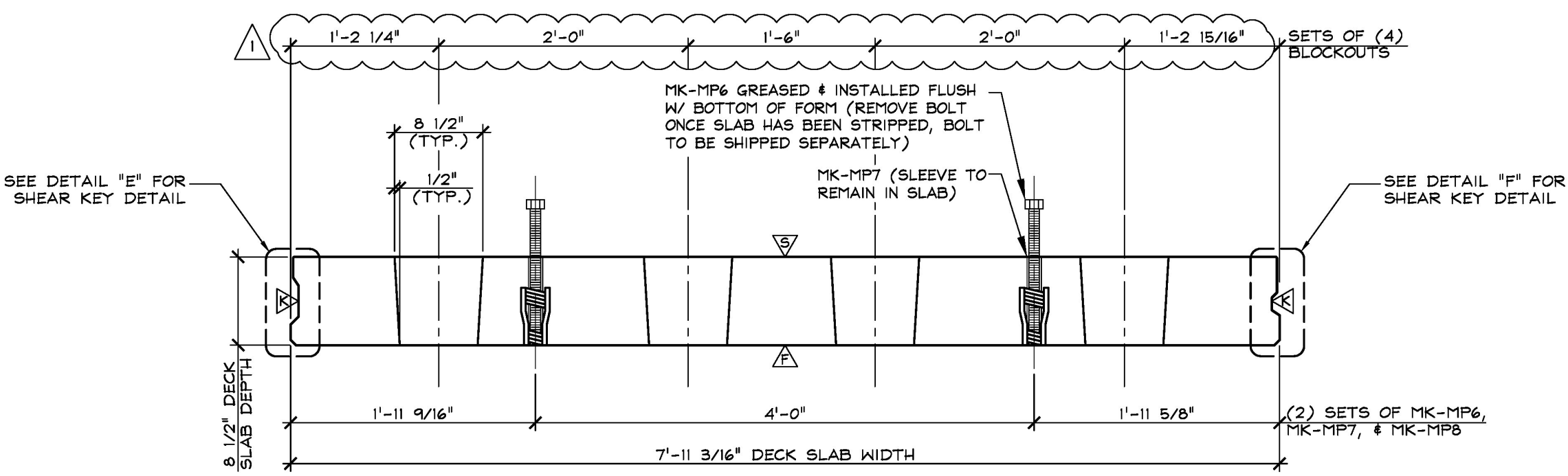
1 DIMENSIONAL PLAN VIEW IN FORM
1/2" = 1'-0"



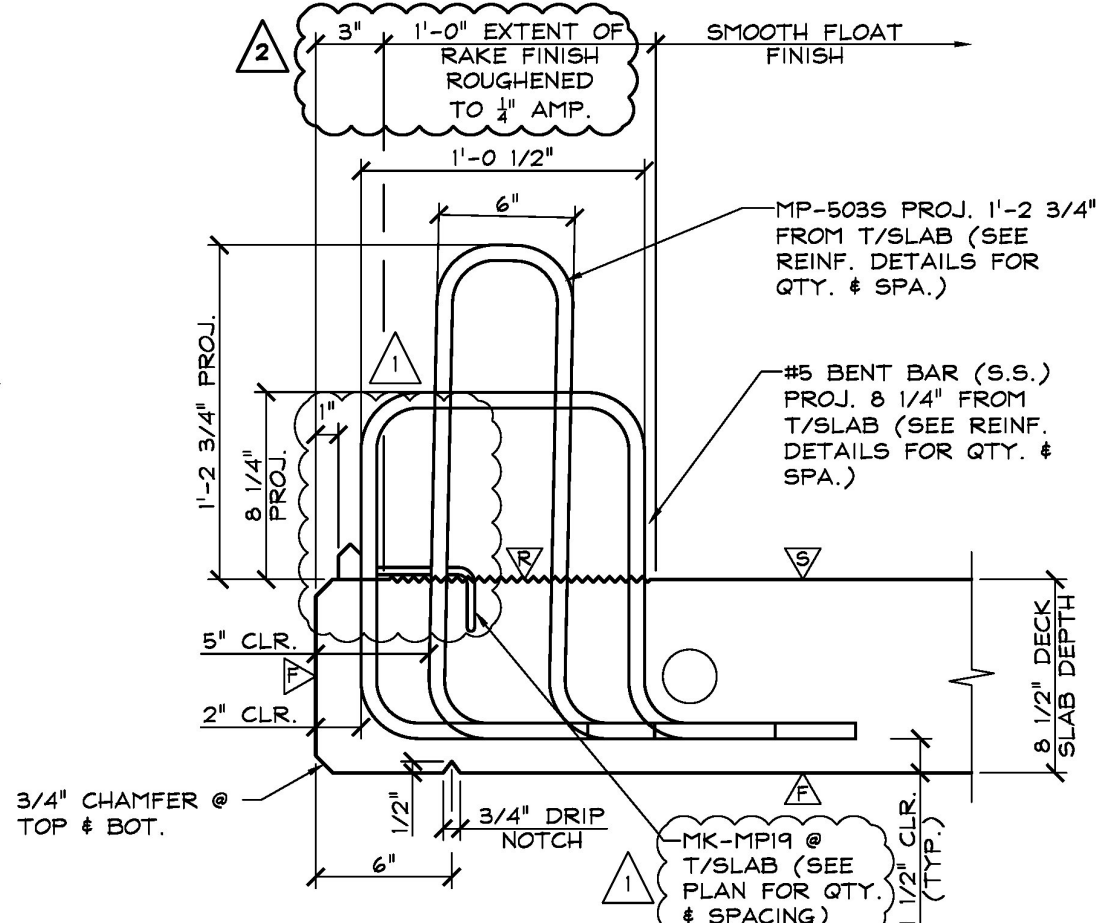
2 DIMENSIONAL ELEVATION
1/2" = 1'-0"



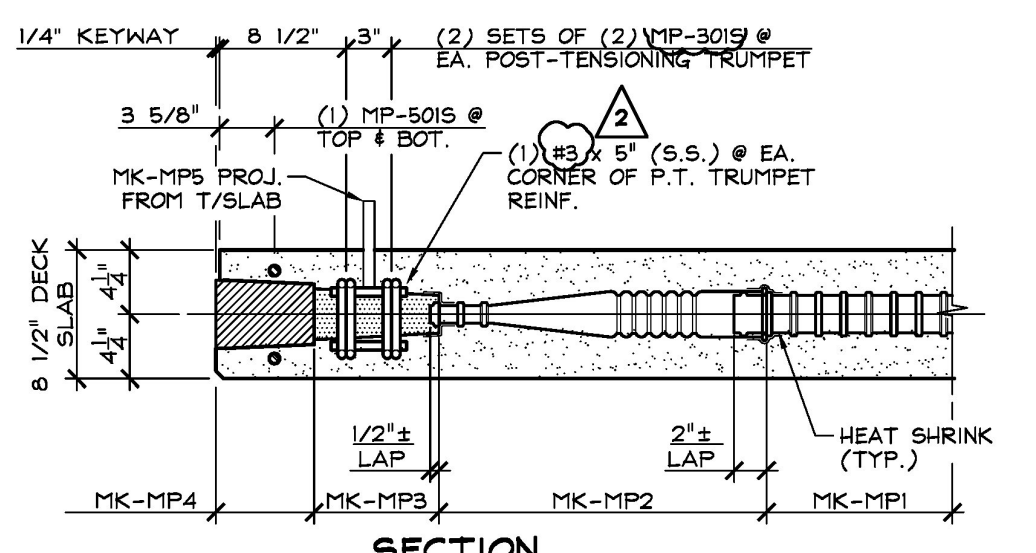
3 DIMENSIONAL ELEVATION
1/2" = 1'-0"



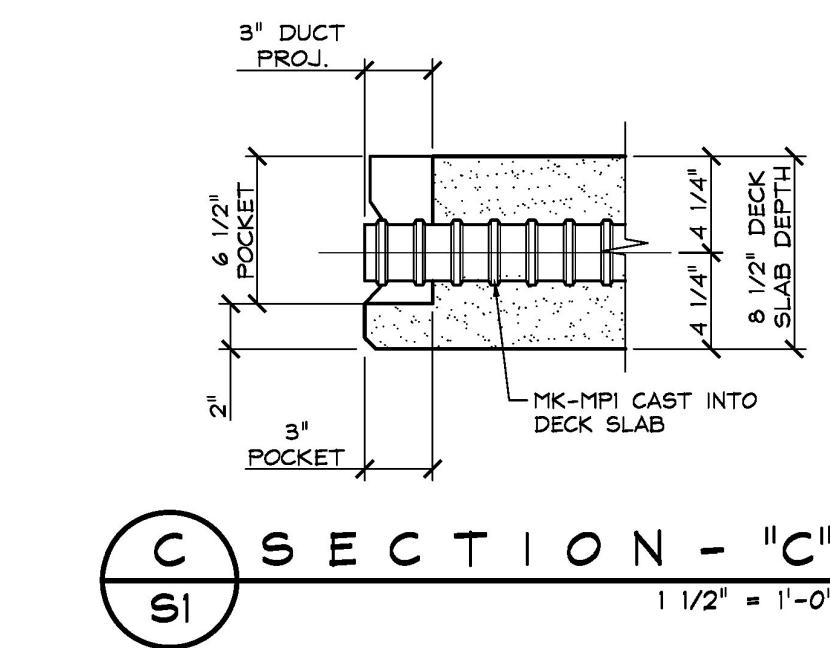
4 DIMENSIONAL SECTION
1" = 1'-0"



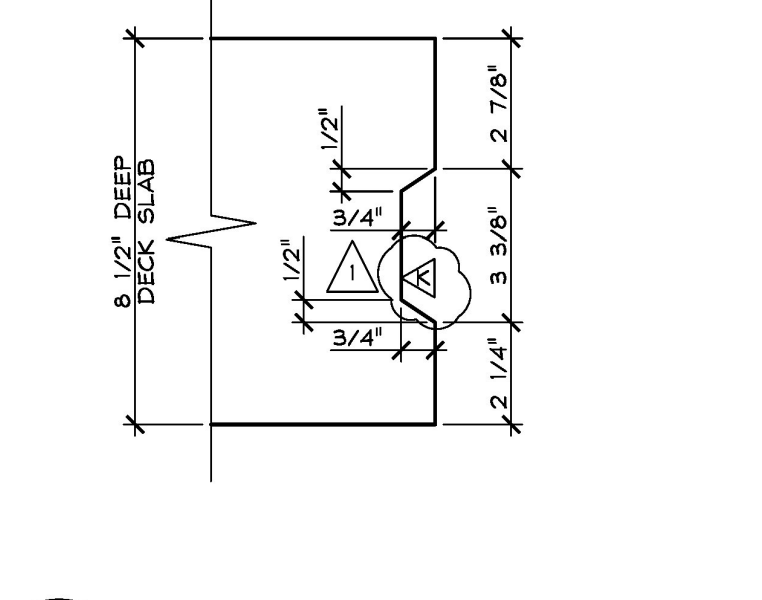
A SECTION - "A"
1 1/2" = 1'-0"



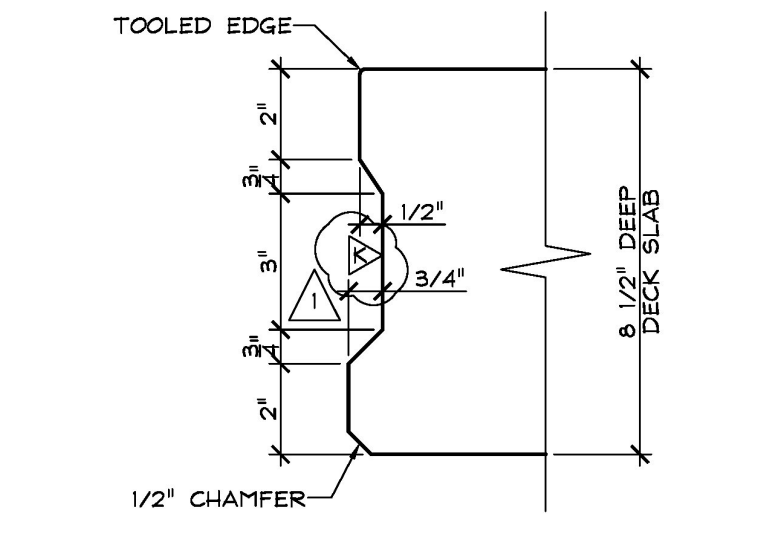
B DETAIL - "B"
1" = 1'-0"



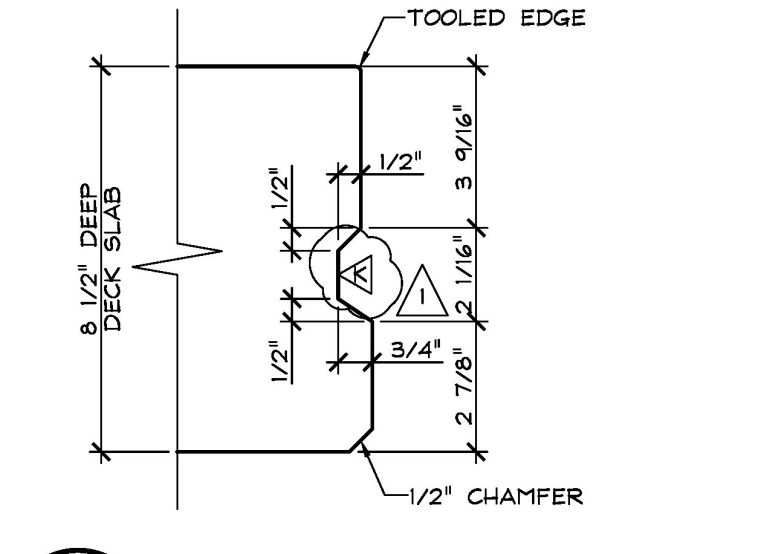
C SECTION - "C"
1 1/2" = 1'-0"



D SECTION - "D"
3" = 1'-0"



E DETAIL - "E"
3" = 1'-0"



F DETAIL - "F"
3" = 1'-0"

- ▲ DENOTES FORM FINISH
- ▲ DENOTES SMOOTH FLOAT FINISH
- ▲ DENOTES ROUGHENED FINISH (SEE GENERAL NOTE #5, SHEET "F1")
- ▲ DENOTES RAKE FINISH ROUGHENED TO 1/4" AMPLITUDE

SHOP NOTE:
F_c = 5,000 PSI
F_{ci} = 3,000 PSI
MIX = 445 M5CC (NO DCI)

SHOP NOTE:
SEE DRAWING "S1" FOR REINFORCING INFORMATION

MARK: MP-DS1		QTY.:	1	WT.:	6.15 T	VOL.:	3.03 cy
MATERIAL LIST / DECK SLAB							
ITEM	MARK	DESCRIPTION					QTY.
1							
2	MK-MP1	GT1 2 3/8" X 5'-1 1/2" LONG CORRUGATED PT DUCT (SUPPLIED BY OTHERS)					6
3	MK-MP2	GT1 1" X 3" TRANSITION PIECE (BY OTHERS)					6
4	MK-MP3	POST-TENSIONING TRUMPET (DS1 4 - 0.6" FLAT ANCHOR (GALV.) W/ HARDWARE (SUPPLIED BY OTHERS)					6
5	MK-MP4	DS1 POCKET FORMER (SUPPLIED BY OTHERS)					6
6	MK-MP5	3/4" X 6" NPT PIPE NIPPLE (SUPPLIED BY OTHERS)					6
7	MK-MP6	1" X 1'-2" LEVELING BOLT (COIL THREAD)					4
8	MK-MP7	1 3/8" O.D. X 1/2" FVC PIPE SLEEVE					4
9	MK-MP8	DAYTON 1" F-56 EXPANDED COIL INSERT (2-STRUT) (GALV.)					4
10	MK-MP9	AT X 5.3/4" SWIFT LIFT LIFTER (GALV.) (DOMESTIC)					4
11	MK-MP19	DAYTON C-24 TYPE 4-APR DECK FORM HANGER (GALV.)					2
12		HEAT SHRINK (SUPPLIED BY OTHERS)					AS REQ'D
13	MP-3015	#3 BENT BAR (STAINLESS STEEL)					24
14	MP-5015	#5 BENT BAR (STAINLESS STEEL)					2
15		#3 X 0'-5" (STAINLESS STEEL)					24

12-15-17 REVISIONS SUBMITTAL #2 COMMENTS
11-2-17 REVISIONS SUBMITTAL #1 COMMENTS

APPROVED: Approval of drawings and/or procedures indicates concurrence with the information presented and does not relieve the Contractor or fabricator of compliance with all specifications and code requirements.

APPROVED AS NOTED

REVISE AND RESUBMIT

NOT REVIEWED

Date: 2/14/18

By: *[Signature]*

This review by Stantec Consulting Services Inc. is for the sole purpose of ascertaining conformance with the general design concept. This review shall not mean that Stantec Consulting Services Inc. assumes any liability for errors or omissions in the shop drawing or of his responsibility for meeting all requirements of the Contract documents. The contractor is responsible for dimensions to be confirmed and correlated at the job site, for information that pertains solely to the fabrication processes or to techniques of construction and installation and for coordination of the work of all subcontractors.



J.P. CARRARA & SONS INC.
Precast & Prestress Manufacturer
2644 GSE STR., WOODBURY, VERMONT 05753 Phone: (802)388-6361 Fax: (802)388-8010

CCS CONSTRUCTORS, INC.
CONTRACTOR
MORRISVILLE, VERMONT

STATE OF VERMONT AGENCY OF TRANSPORTATION
COUNTY OF WASHINGTON

TOWN OF EAST MONTPELIER
VT ROUTE 14, MINOR ARTERIAL
BRIDGE NO.: 68 PROJECT NO.: BRF 037-1 (7)

DATE: SEPT. 14, 2017
SCALE: NOTED
CHKD: K.P. DFTM: A.S.
JOB NO: 23515-017
DWG. NO: S1