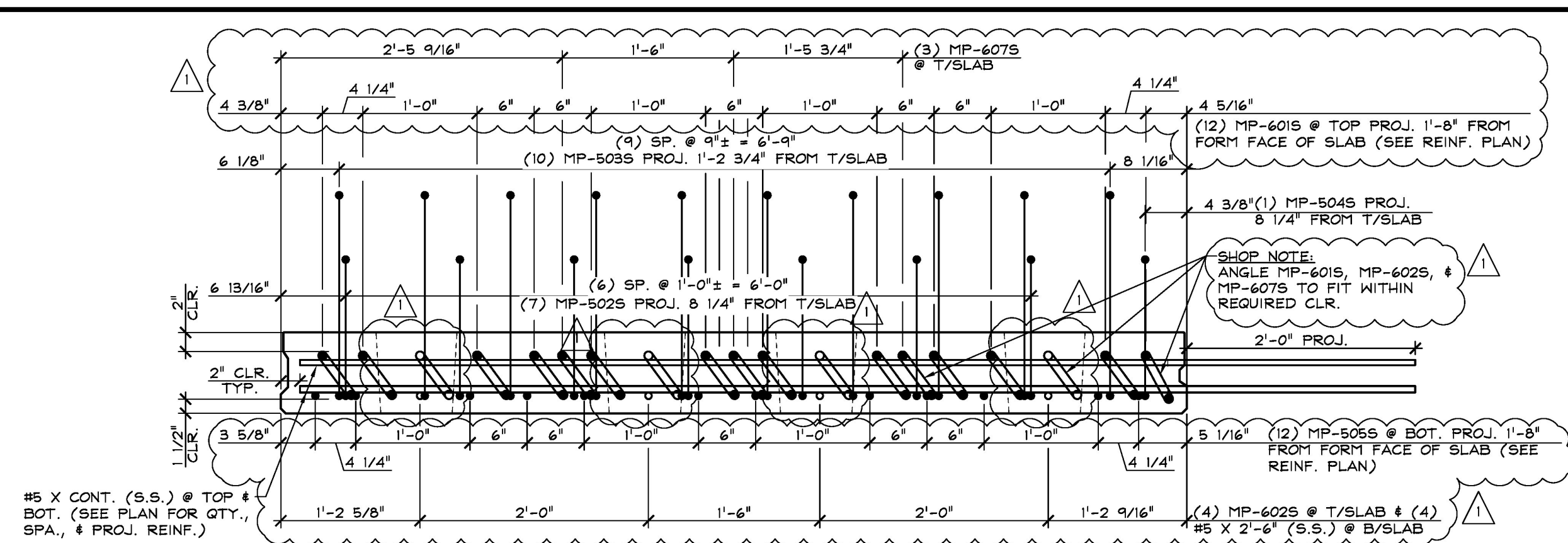
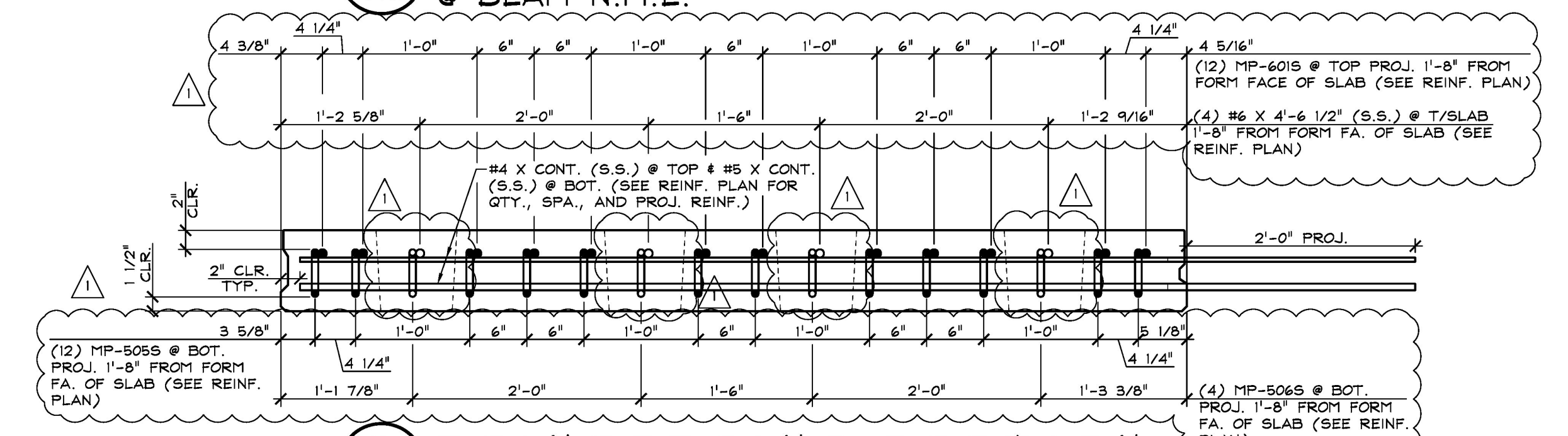


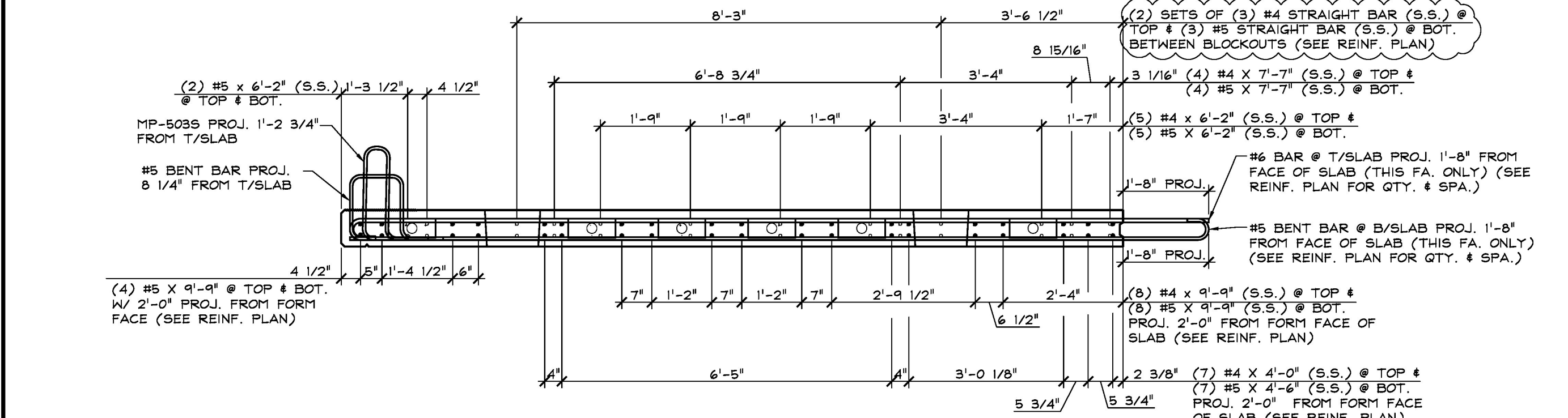
1 REINFORCING PLAN VIEW IN FORM
S1.1
1/2" = 1'-0"



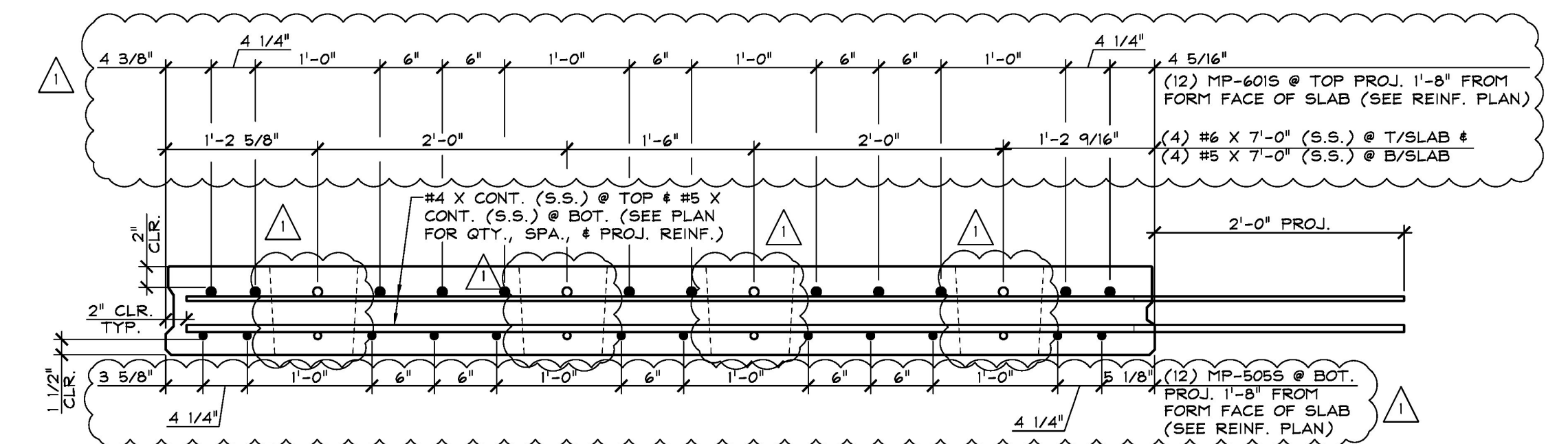
4 REINFORCING SECTION
S1.1 @ BEAM N.M.E.
1" = 1'-0"



5 REINFORCING SECTION
S1.1 @ BEAM M.E.
1" = 1'-0"



2 REINFORCING ELEVATION
S1.1
1/2" = 1'-0"



3 REINFORCING SECTION
S1.1 @ MIDSPAN
1" = 1'-0"

SHOP NOTE:
F_c = 5,000 PSI
F_t = 3,000 PSI
MIX # 445 MSCC (NO DCI)

SHOP NOTE:
SEE DRAWING 'S1' FOR
ADDITIONAL REINF.

MARK: MP-DS1 QTY.: 1 WT.: 6.15 T VOL.: 3.03 cy			
MATERIAL LIST / DECK SLAB			
ITEM	MARK	DESCRIPTION	QTY.
1			
2	MP-5025	#5 BENT BAR (STAINLESS STEEL)	7
3	MP-5035	#5 BENT BAR (STAINLESS STEEL)	10
4	MP-5045	#5 BENT BAR (STAINLESS STEEL)	4
5	MP-5055	#5 BENT BAR (STAINLESS STEEL)	12
6	MP-5065	#5 BENT BAR (STAINLESS STEEL)	4
7	MP-6015	#6 BENT BAR (STAINLESS STEEL)	12
8	MP-6025	#6 BENT BAR (STAINLESS STEEL)	4
9	MP-6075	#6 BENT BAR (STAINLESS STEEL)	3
10			
11	1	#4 X 0'-5 1/2" (STAINLESS STEEL)	2
12		#4 X 0'-11 1/2" (STAINLESS STEEL)	4
13		#4 X 4'-0" (STAINLESS STEEL)	7
14		#4 X 6'-2" (STAINLESS STEEL)	5
15		#4 X 7'-7" (STAINLESS STEEL)	4
16		#4 X 9'-9" (STAINLESS STEEL)	8
17	1	#5 X 0'-5 1/2" (STAINLESS STEEL)	2
18		#5 X 0'-11 1/2" (STAINLESS STEEL)	4
19		#5 X 2'-6" (STAINLESS STEEL)	4
20		#5 X 4'-6" (STAINLESS STEEL)	7
21		#5 X 6'-2" (STAINLESS STEEL)	9
22		#5 X 7'-0" (STAINLESS STEEL)	4
23		#5 X 7'-7" (STAINLESS STEEL)	4
24		#5 X 9'-9" (STAINLESS STEEL)	16
25		#6 X 4'-6 1/2" (STAINLESS STEEL)	4
26		#6 X 7'-0" (STAINLESS STEEL)	4

APPROVED: Approval of drawings and/or procedures indicates concurrence with the information presented and does not relieve the Contractor or Fabricator of compliance with all specifications and code requirements.

APPROVED AS NOTED

REVISE AND RESUBMIT

NOT REVIEWED

Date: 2/14/18

By: *John E. Kivler*

This review by Stantec Consulting Services Inc. is for the sole purpose of ascertaining conformance with the general design concept. This review shall not mean that Stantec Consulting Services Inc. approves the detail design inherent in the shop drawings. Responsibility for which shall remain with the Contractor. Submitting same, and such review shall not relieve the Contractor of his responsibility for errors or omissions in the shop drawings or of his responsibility for meeting all requirements of the Contract Documents. The contractor is responsible for dimensions to be confirmed and correlated at the job site, for information that pertains solely to the fabrication processes or to techniques of construction and installation and for coordination of the work of all subtrades.



11-2-17 REVISIONS SUBMITTAL #1 COMMENTS

APPROVAL STAMP:	J.P. CARRARA & SONS INC. Precast & Prestress Manufacturer 2644 GISE STR., WOODBURY, VERMONT 05753 Phone: (802)388-6361 Fax: (802)388-8010	CCS CONSTRUCTORS, INC. CONTRACTOR MORRISVILLE, VERMONT
	STATE OF VERMONT AGENCY OF TRANSPORTATION COUNTY OF WASHINGTON	DATE: SEPT. 14, 2017
	TOWN OF EAST MONTPELIER VT ROUTE 14, MINOR ARTERIAL BRIDGE NO.: 68 PROJECT NO.: BRF 037-1 (7)	SCALE: NOTED
	PRECAST CONCRETE DECK SLAB DETAILS	CHKD: K.P. DFTM: A.S. JOB NO: 23515-017 DWG. NO: S1.1