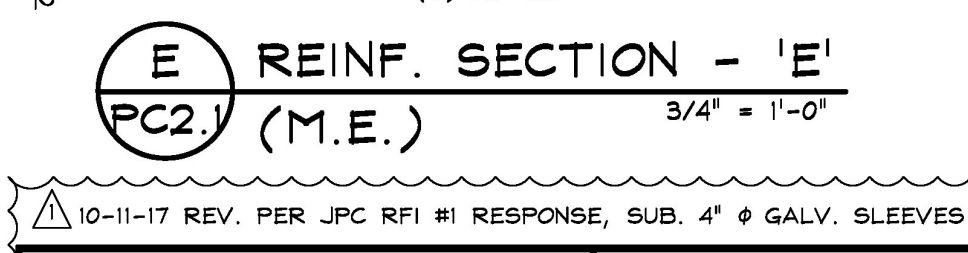


**MARK MP-PC2 QTY.: 1 WT.: 47.71 T VOL.: 29.45 cy**

MATERIAL LIST / PILE CAP			
ITEM	MARK	DESCRIPTION	QTY.
1			
2	MP-516	#5 BENT BAR (BLACK)	10
3	MP-519	#5 BENT BAR (BLACK)	40
4	MP-520	#5 BENT BAR (BLACK)	40
5	MP-525	#5 BENT BAR (BLACK)	9
6	MP-526	#5 BENT BAR (BLACK)	15
7	MP-527	#5 BENT BAR (BLACK)	27
8	MP-528	#5 BENT BAR (BLACK)	33
9	MP-529	#5 BENT BAR (BLACK)	20
10	MP-530	#5 BENT BAR (BLACK)	8
11	MP-531	#5 BENT BAR (BLACK)	20
12	MP-1001	#10 BENT BAR (BLACK)	9
13	MP-1002	#10 BENT BAR (BLACK)	9
14	MP-1003	#10 BENT BAR (BLACK)	5
15	MP-1004	#10 BENT BAR (BLACK)	5
16		#4 X 30'-10" (BLACK)	2
17		#4 X 45'-11" (BLACK)	8
18		#5 X 3'-9" (BLACK)	12
19		#5 X 4'-1" (BLACK)	12
20		#10 X 38'-10" (BLACK)	10

ALT. (3) MP-1002 W/ (2) MP-1001  
ALT. (3) MP-1004 W/ (2) MP-1003  
ALT. (3) MP-1001 W/ (2) MP-1002  
ALT. (3) MP-1003 W/ (2) MP-1004



APPROVAL STAMP:

Vermont Agency of Transportation  
**RECEIVED**  
OK'D BY Stantec OK'D BY 10/24/2017  
October 13, 2017  
RESUBMIT No Approved AsNoted  
By Carolyn W. Carlson DATE 10/24/2017

**J.P. CARRARA & SONS INC.**  
Precast & Prestress Manufacturer  
2644 OISE ST., WOODBURY, VERMONT 05753 Phone: (802)388-6361 Fax: (802)388-8010

**CCS CONSTRUCTORS, INC.**  
CONTRACTOR  
MORRISVILLE, VERMONT

STATE OF VERMONT AGENCY OF TRANSPORTATION  
COUNTY OF WASHINGTON

TOWN OF EAST MONTPELIER  
VT ROUTE 14, MINOR ARTERIAL  
BRIDGE NO.: 68 PROJECT NO.: BRF 037-1 (7)

DATE: SEPT. 14, 2017  
SCALE: NOTED  
CHKD: K.P. DFTM: A.S.  
JOB NO: 23515-017  
DWG. NO: PC2.1