

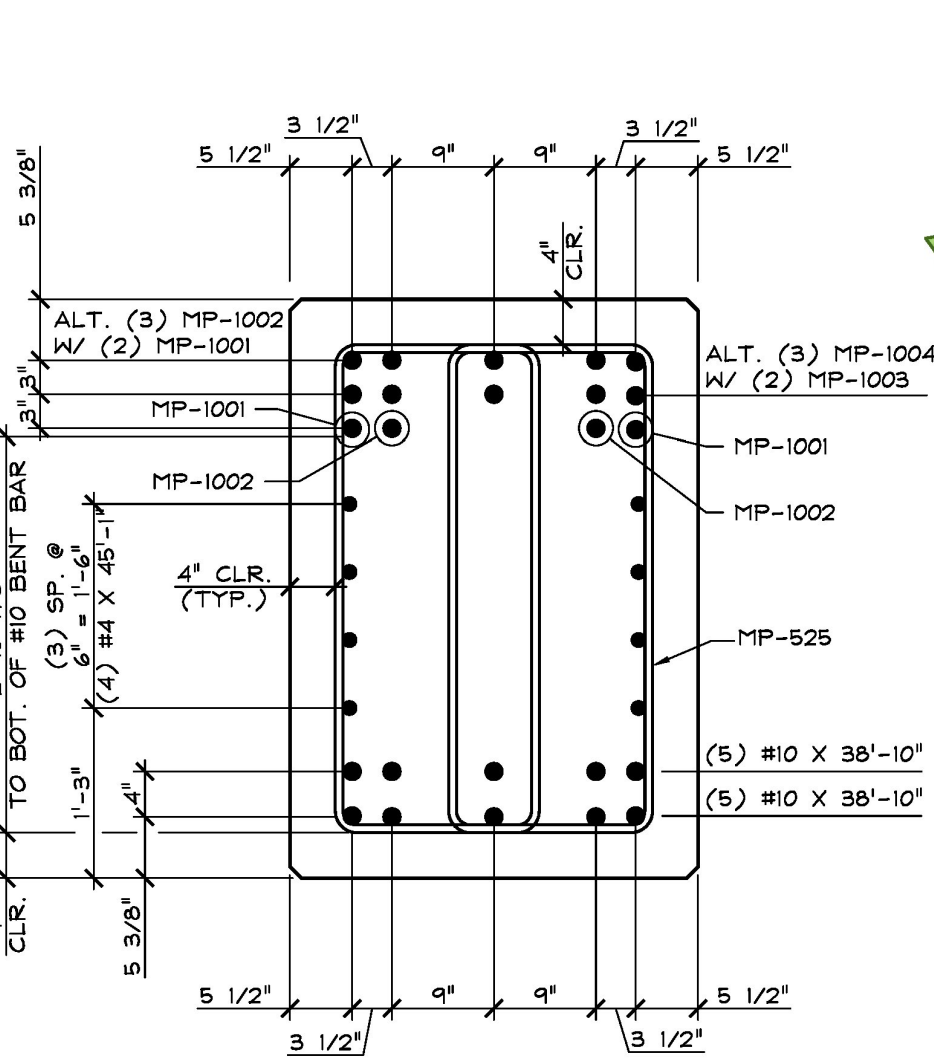
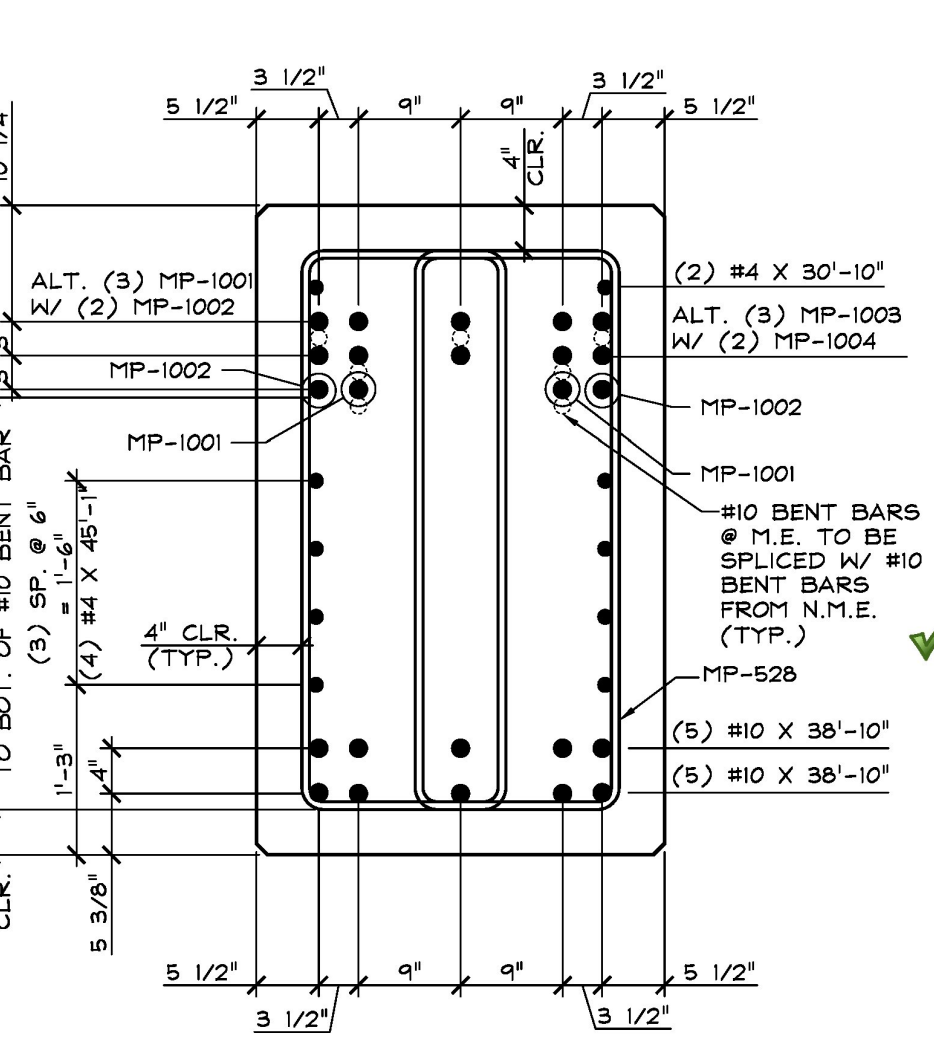
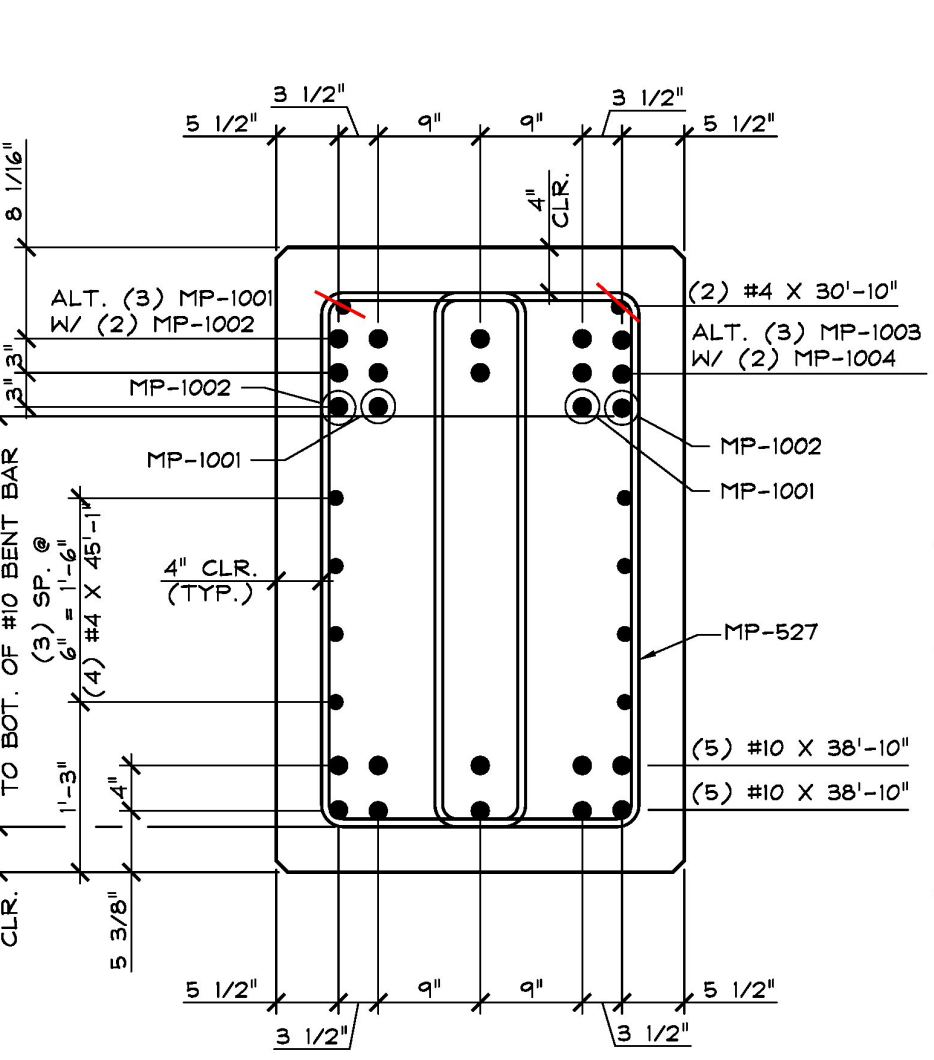
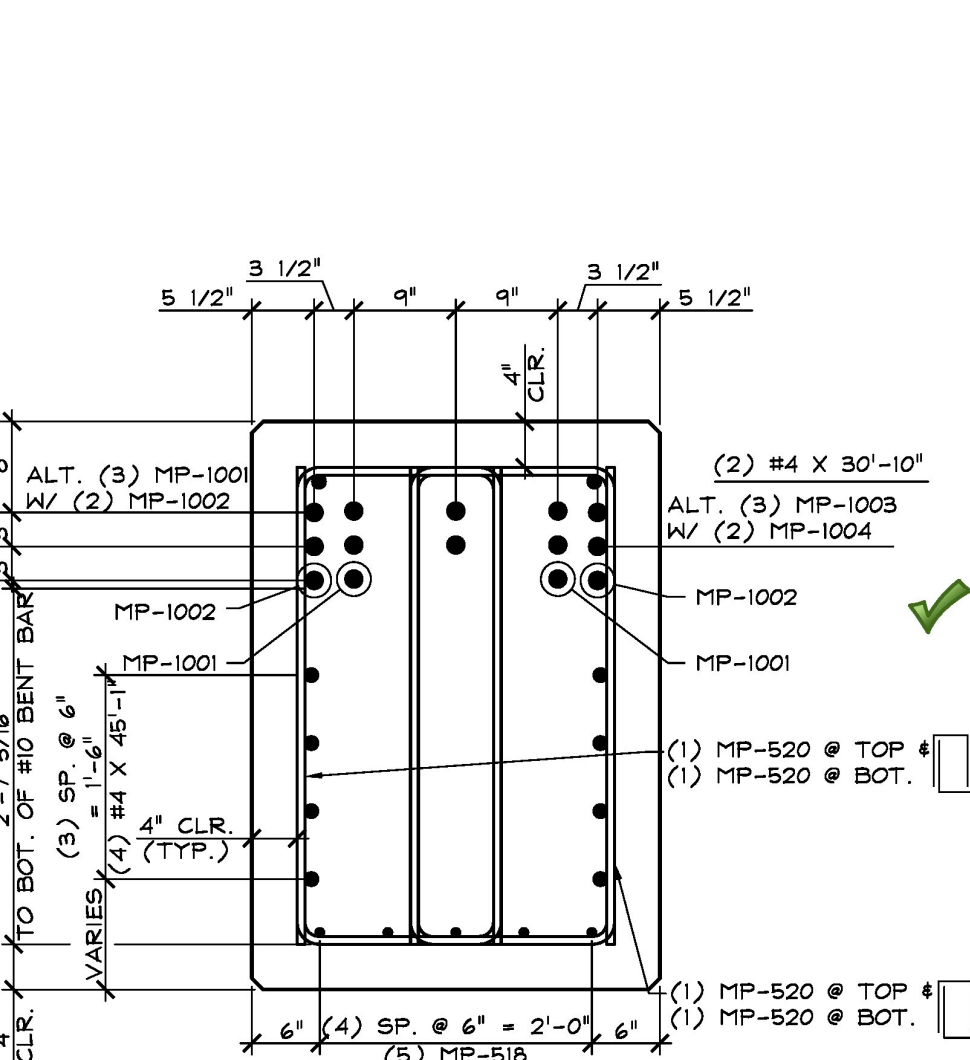
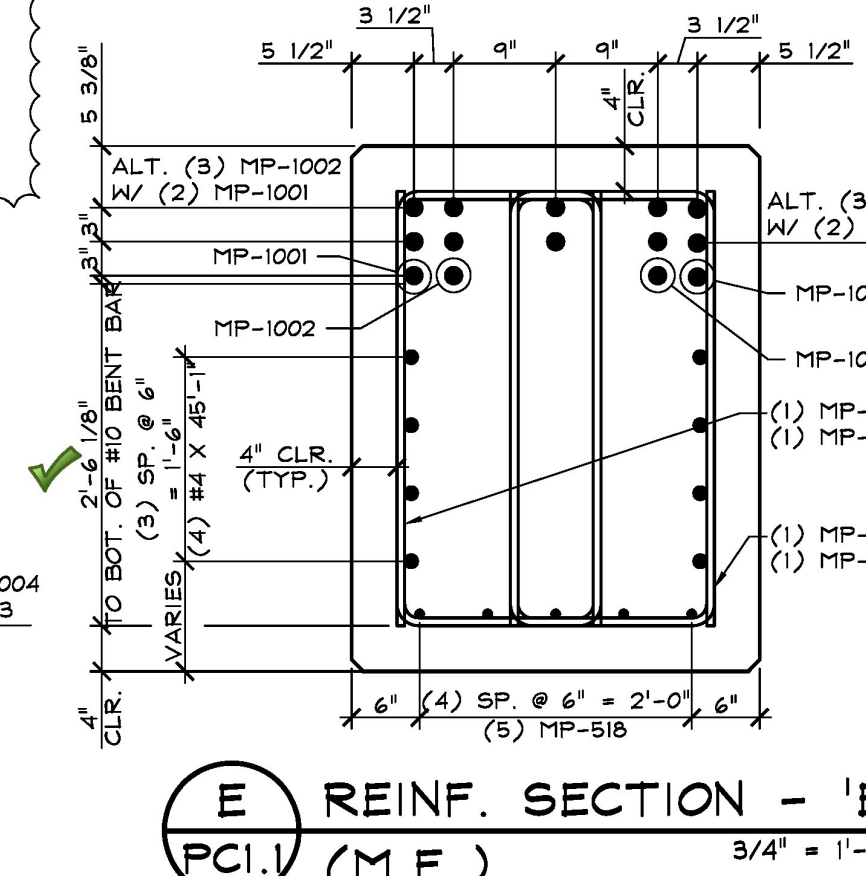
(1) MP-518 @ BOT.
(SEE REINF. PLAN FOR QUANTITY & SPA.)

(1) MP-518 @ BOT.
(SEE REINF. PLAN FOR QUANTITY & SPA.)

SHOP NOTE:
f_c = 5,000 PSI
f_{ci} = 4,000 PSI
MIX # 426 LW (NO DCI)

MARK: MP-PCI QTY.: 1 WT.: 47.71 T VOL.: 29.45 cy

MATERIAL LIST / PILE CAP			
ITEM	MARK	DESCRIPTION	QTY.
1			
2	MP-518	#5 BENT BAR (BLACK)	10
3	MP-519	#5 BENT BAR (BLACK)	40
4	MP-520	#5 BENT BAR (BLACK)	40
5	MP-525	#5 BENT BAR (BLACK)	9
6	MP-526	#5 BENT BAR (BLACK)	15
7	MP-527	#5 BENT BAR (BLACK)	27
8	MP-528	#5 BENT BAR (BLACK)	38
9	MP-529	#5 BENT BAR (BLACK)	20
10	MP-530	#5 BENT BAR (BLACK)	5
11	MP-531	#5 BENT BAR (BLACK)	20
12	MP-1001	#10 BENT BAR (BLACK)	9
13	MP-1002	#10 BENT BAR (BLACK)	9
14	MP-1003	#10 BENT BAR (BLACK)	5
15	MP-1004	#10 BENT BAR (BLACK)	5
16		#4 X 30'-10" (BLACK)	2
17		#4 X 45'-1" (BLACK)	8
18		#5 X 3'-9" (BLACK)	12
19		#5 X 4'-1" (BLACK)	12
20		#10 X 38'-10" (BLACK)	10



APPROVAL STAMP:
Vermont Agency of Transportation
RECEIVED
October 13, 2017
RESUBMIT No Approved AsNoted
BY Carolyn W. Carlson DATE 10/24/2017

J.P. CARRARA & SONS INC.
Precast & Prestress Manufacturer
2644 GEE ST., WOODBURY, VERMONT 05753 Phone: (802)388-5361 Fax: (802)388-8010

CCS CONSTRUCTORS, INC.
CONTRACTOR
MORRISVILLE, VERMONT

STATE OF VERMONT AGENCY OF TRANSPORTATION
COUNTY OF WASHINGTON

DATE: SEPT. 14, 2017
SCALE: NOTED
CHKD: K.P. DFTM: A.S.
JOB NO: 23515-017
DWG. NO: PCI.1

TOWN OF EAST MONTPELIER
VT ROUTE 14, MINOR ARTERIAL
BRIDGE NO.: 68 PROJECT NO.: BRF 037-1 (7)
PRECAST CONCRETE PILE CAP
REINFORCING DETAILS