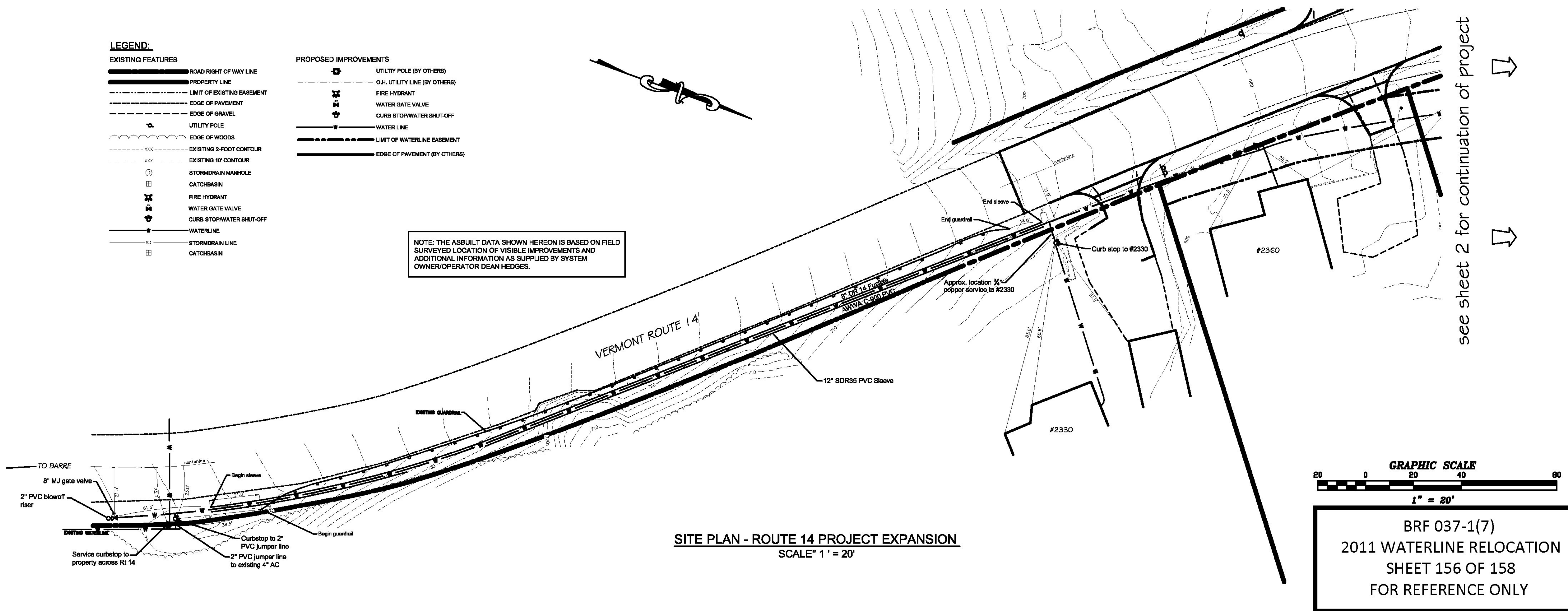


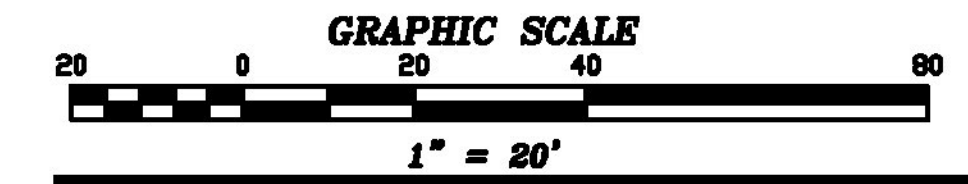
LEGEND:

- | | |
|--------------------------------|----------------------------------|
| EXISTING FEATURES | PROPOSED IMPROVEMENTS |
| — ROAD RIGHT OF WAY LINE | — UTILITY POLE (BY OTHERS) |
| — PROPERTY LINE | — O.H. UTILITY LINE (BY OTHERS) |
| --- LIMIT OF EXISTING EASEMENT | — FIRE HYDRANT |
| --- EDGE OF PAVEMENT | — WATER GATE VALVE |
| --- EDGE OF GRAVEL | — CURB STOP/WATER SHUT-OFF |
| — UTILITY POLE | — WATER LINE |
| --- EDGE OF WOODS | --- LIMIT OF WATERLINE EASEMENT |
| --- EXISTING 2-FOOT CONTOUR | --- EDGE OF PAVEMENT (BY OTHERS) |
| --- EXISTING 10' CONTOUR | |
| ⊙ STORMDRAIN MANHOLE | |
| ⊕ CATCH-BASIN | |
| ⊙ FIRE HYDRANT | |
| ⊕ WATER GATE VALVE | |
| ⊕ CURB STOP/WATER SHUT-OFF | |
| — WATERLINE | |
| — STORMDRAIN LINE | |
| ⊕ CATCH-BASIN | |

NOTE: THE ASBUILT DATA SHOWN HEREON IS BASED ON FIELD SURVEYED LOCATION OF VISIBLE IMPROVEMENTS AND ADDITIONAL INFORMATION AS SUPPLIED BY SYSTEM OWNER/OPERATOR DEAN HEDGES.

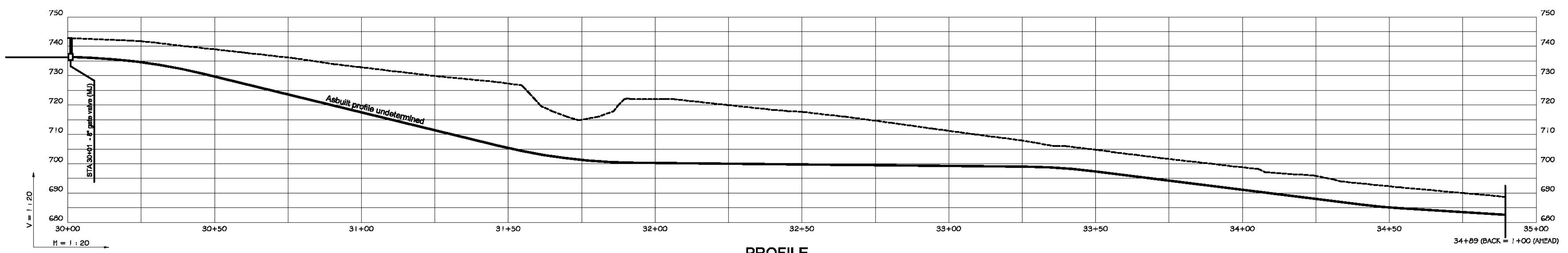


SITE PLAN - ROUTE 14 PROJECT EXPANSION
SCALE: 1" = 20'



BRF 037-1(7)
2011 WATERLINE RELOCATION
SHEET 156 OF 158
FOR REFERENCE ONLY

see sheet 2 for continuation of project



PROFILE
PROPOSED 8" WATERLINE - ROUTE 14 SOUTH
STA 30+00 to STA 34+89
SCALE: 1" = 20' HORIZ & VERT

see sheet 4 for continuation of profile

RECORD DRAWING



REVISED: 12/06/12 - 2012 CONSTRUCTION ASBUILT DATA ADDED; SEE NOTE - KKJ

PLAN & PROFILE
PROJECT EXPANSION - RT 14 SOUTH
CRYSTAL SPRINGS WATER CO.
ROUTES 2 & 14 EAST MONTPELIER, VT

CHENETTE ASSOCIATES, P.C.
BERNARD X. CHENETTE P.E.
BERLIN, VERMONT

DRAWN BY: KKJ	SCALE: 1"=20'	DWG. NO. 11 016
CHECK'D BY: BXC	DATE: 9/13/11	SHEET: SH 4A OF 5