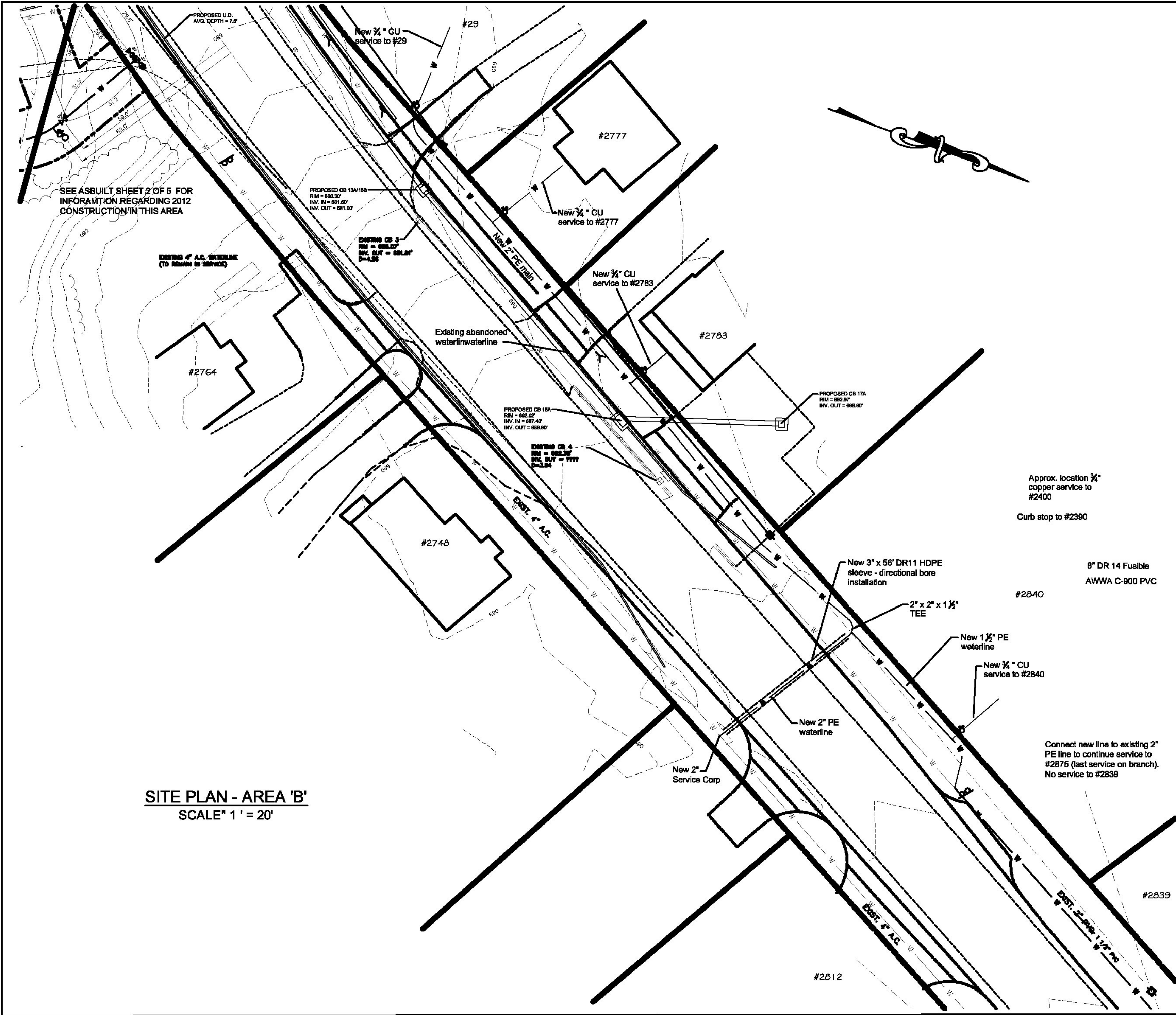




**SITE PLAN - AREA 'A'**  
SCALE" 1" = 20'

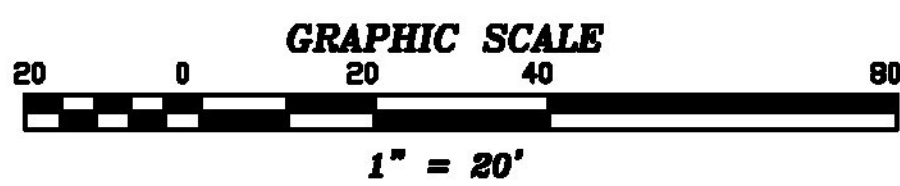


**SITE PLAN - AREA 'B'**  
SCALE" 1" = 20'

**LEGEND:**

- EXISTING FEATURES**
- ROAD RIGHT OF WAY LINE
  - PROPERTY LINE
  - - - - - LIMIT OF EXISTING EASEMENT
  - - - - - EDGE OF PAVEMENT
  - - - - - EDGE OF GRAVEL
  - UTILITY POLE
  - ~ EDGE OF WOODS
  - EXISTING 2-FOOT CONTOUR
  - EXISTING 10' CONTOUR
  - ⊙ STORMDRAIN MANHOLE
  - ⊞ CATCH-BASIN
  - ⊞ FIRE HYDRANT
  - ⊞ WATER GATE VALVE
  - ⊞ CURB STOP/WATER SHUT-OFF
  - WATERLINE
  - STORMDRAIN LINE
  - ⊞ CATCH-BASIN

- PROPOSED IMPROVEMENTS**
- ⊞ UTILITY POLE (BY OTHERS)
  - O.H. UTILITY LINE (BY OTHERS)
  - ⊞ FIRE HYDRANT
  - ⊞ WATER GATE VALVE
  - ⊞ CURB STOP/WATER SHUT-OFF
  - WATER LINE
  - - - - - LIMIT OF WATERLINE EASEMENT
  - EDGE OF PAVEMENT (BY OTHERS)



NOTE: THE ASBUILT DATA SHOWN HEREON IS BASED ON FIELD SURVEYED LOCATION OF VISIBLE IMPROVEMENTS AND ADDITIONAL INFORMATION AS SUPPLIED BY SYSTEM OWNER/OPERATOR DEAN HEDGES.

BRF 037-1(7)  
2011 WATERLINE RELOCATION  
SHEET 155 OF 158  
FOR REFERENCE ONLY

**RECORD DRAWING**



REVISED: 12/18/12 - 2012 CONSTRUCTION ASBUILT DATA ADDED; SEE NOTE - KJK  
REVISED: 10/6/11 - STA 50+00 CORP. SIZE CORRECTED - KJK  
REVISED: 9/1/11 - ROUTE 2 WEST CROSSING ELIMINATED - KJK

**SITE PLAN**  
**PROPOSED IMPROVEMENTS**  
**CRYSTAL SPRINGS WATER CO.**  
ROUTES 2 & 14 EAST MONTPELIER, VT

CHENETTE ASSOCIATES, P.C.  
BERNARD X. CHENETTE P.E.  
BERLIN, VERMONT

|                        |                      |                         |
|------------------------|----------------------|-------------------------|
| DRAWN BY: <b>KKJ</b>   | SCALE: <b>1"=20'</b> | DWG. NO. <b>11 016</b>  |
| CHECK'D BY: <b>BXC</b> | DATE: <b>8/8/11</b>  | SHEET: <b>SH 3 OF 5</b> |