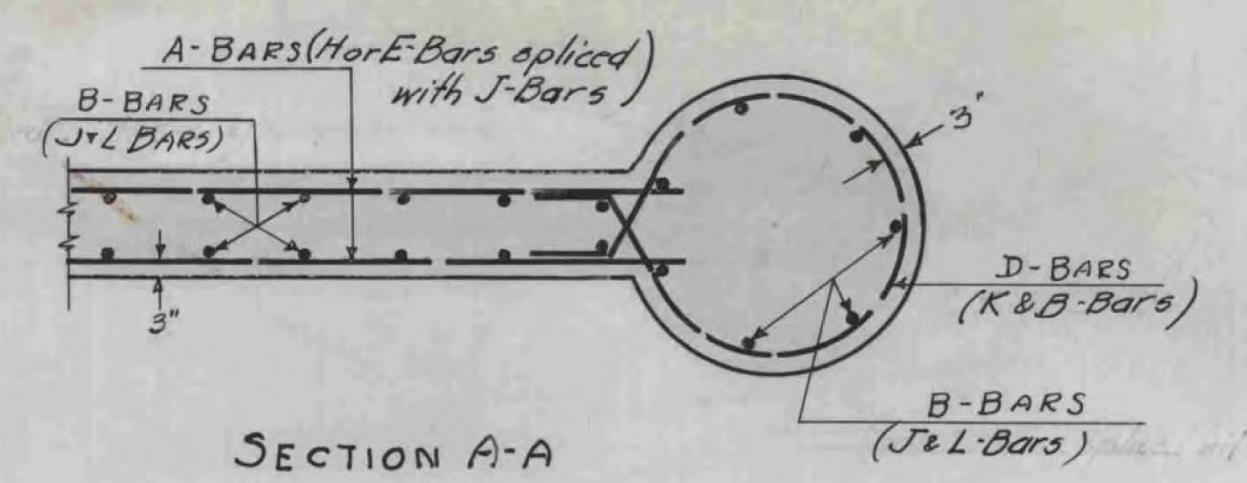
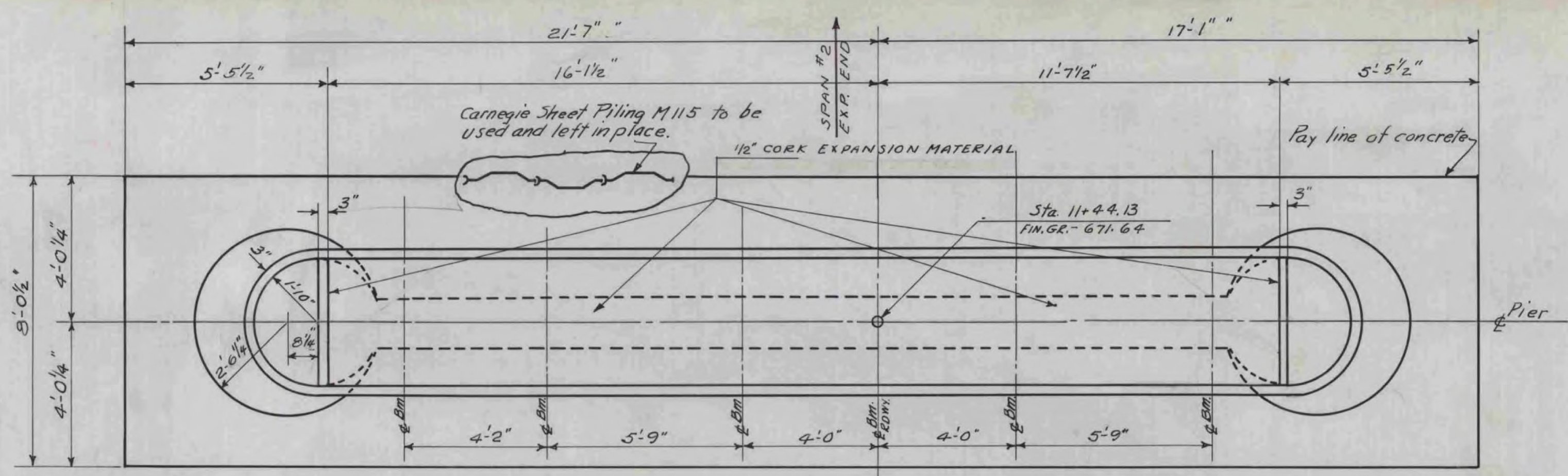


FED. ROAD DIST. NO.	STATE	PWA DOKKET	FISCAL YEAR	SHEET NO.	TOTAL SHEETS
9	Vt.	1020-B	1936	4A	20



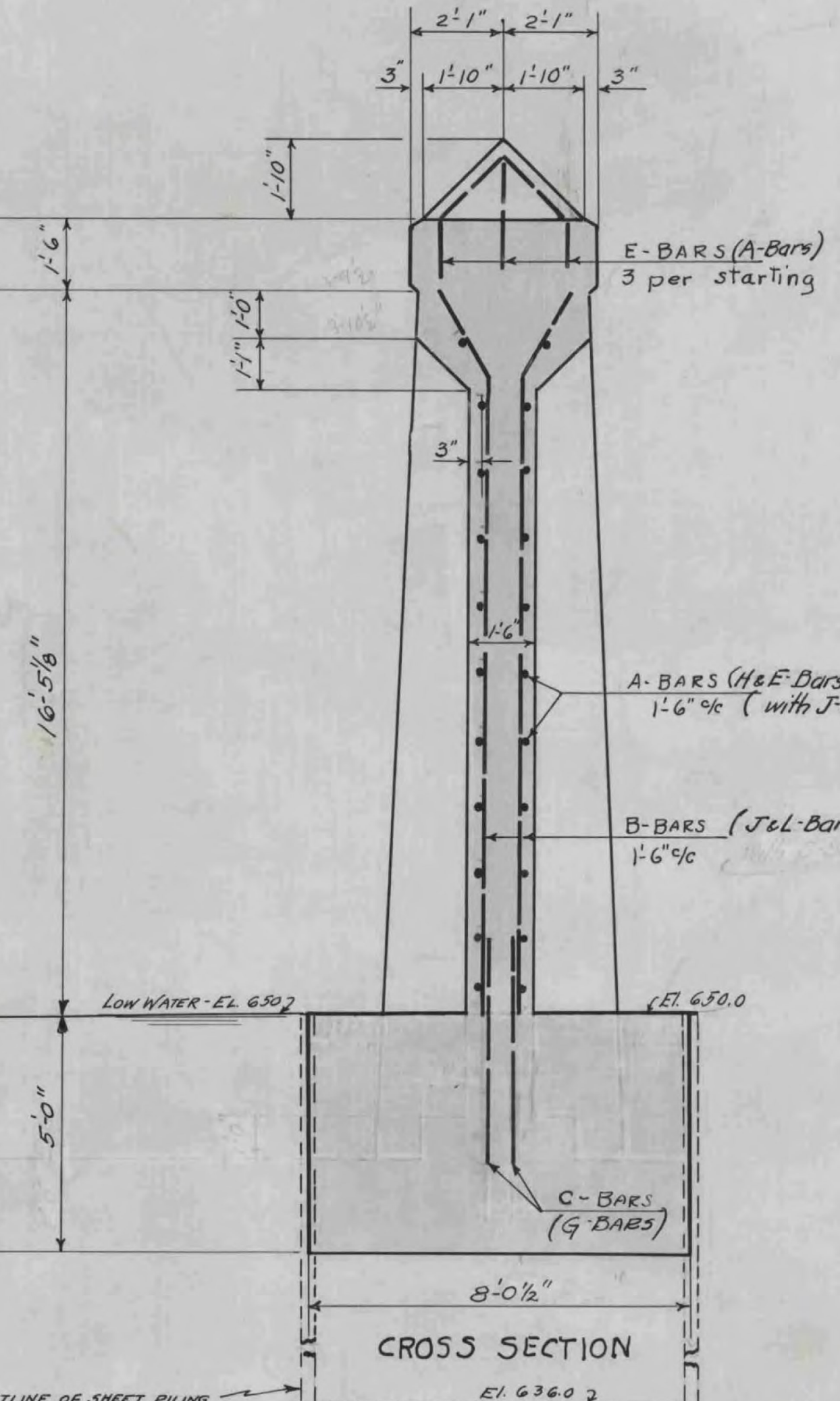
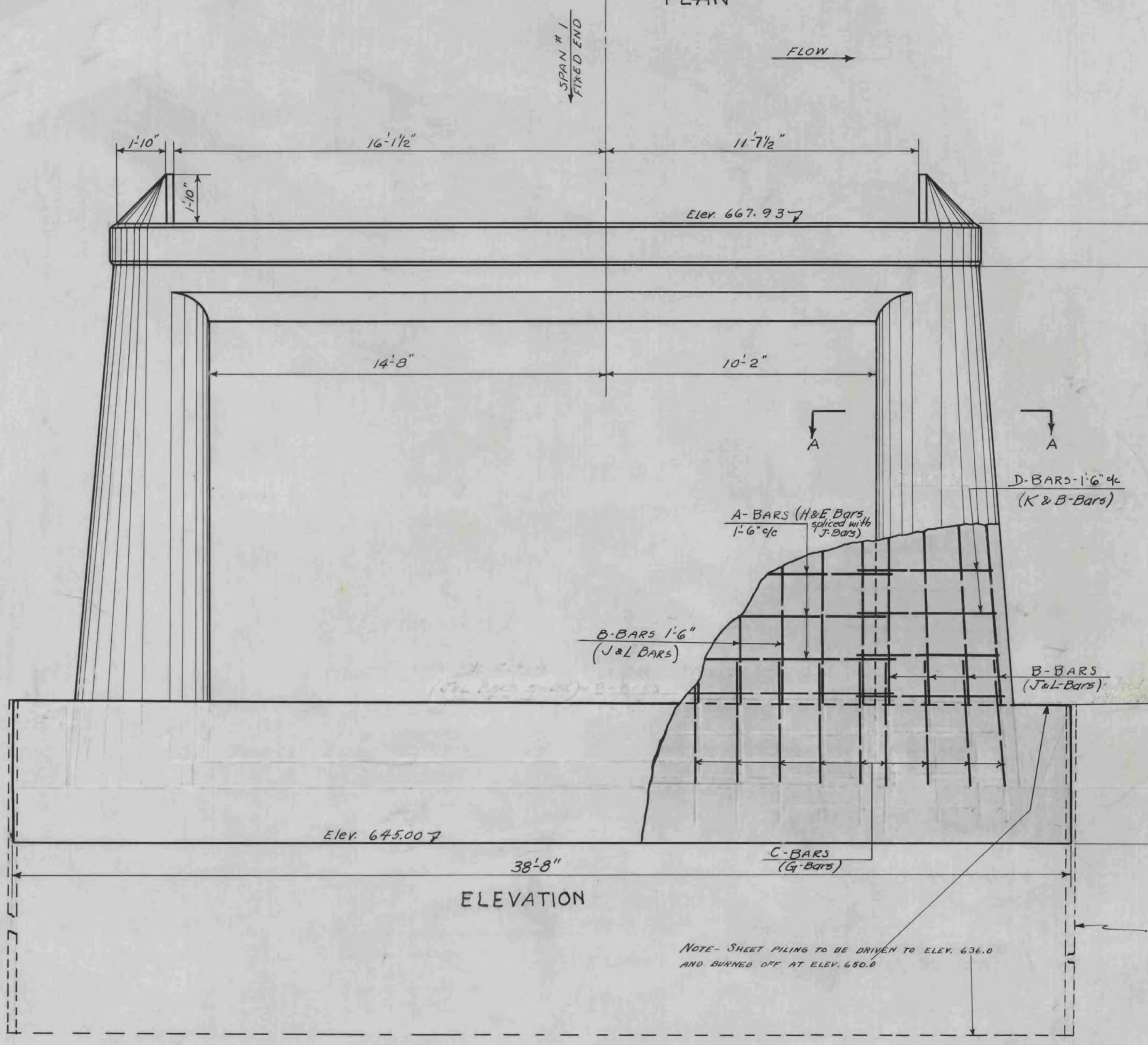
BAR	SIZE	REQD	TOT. LGTH.	DETAIL
A	5/8"	22	26'-0"	STRAIGHT
B	"	48	16'-6"	"
C	"	48	3'-0"	"
D	"	22	18'-0"	STRAIGHT BEND IN FIELD
E	"	6	3'-0"	" " "

See schedule below

Bar # on Sk #4A	Substitute (Reinf. Steel on sheet #4)
A	14 H-Bars 8 E " (Cut to 12'-0") splice with 2 J-Bars
B	34 J-Bars 14 L "
C	48 G Bars
D	14 K-Bars 8 B " (Bend in field)
E	6 A-Bars " " "

BRF 037-1(7)
1936 VILLAGE BRIDGE PLANS
SHEET 151 OF 158
FOR REFERENCE ONLY

NOTE: THIS SHEET SUPERSEDES SHEET 4 OF 20
BARS IN PARENTHESIS ARE TO BE USED AND ARE ON STEEL SCHEDULE OF SHEET N#4.



REVISED
DETAIL OF PIER
EAST MONTPELIER
Scale: 3/8" = 1'-0"

NOTE - SHEET PILING TO BE DRIVEN TO ELEV. 636.0 AND BURNED OFF AT ELEV. 650.0

ESTIMATED QUANTITIES	
Structure Excav.	152 C.Y.
Conc. Class 'A	109 C.Y.
Reinforcing Steel	33984 LBS.
Steel Sheeting	See sheet N#4

NOTE THE STRUCTURE EXCAVATION GIVEN INCLUDES THE EXCAVATION OF THE OLD PIER. (114 CU. YDS.)

Surveyed by
Designed by
Drawn by A.G. 5-10-36
Traced by D.W.R.
Checked by DWP & CES
Series PWA No. Yt. 1020-B
Docket Sheet 4A of 20 Sheets