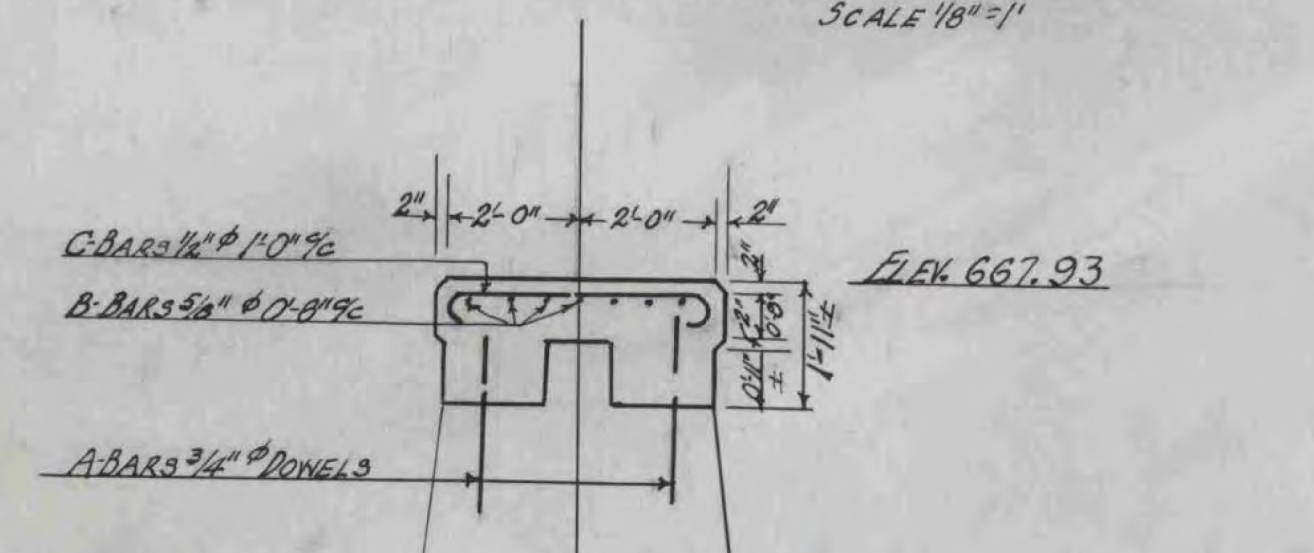
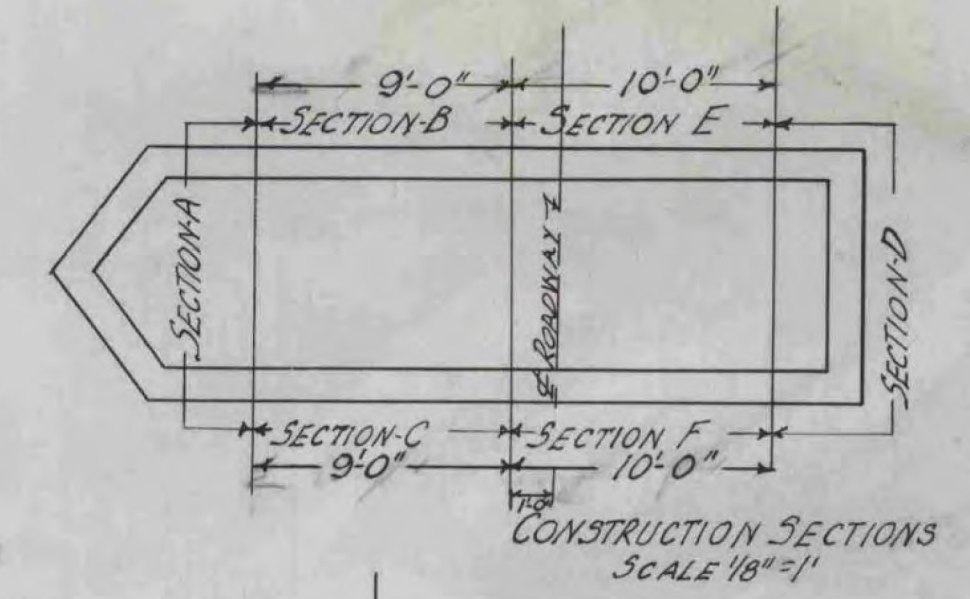
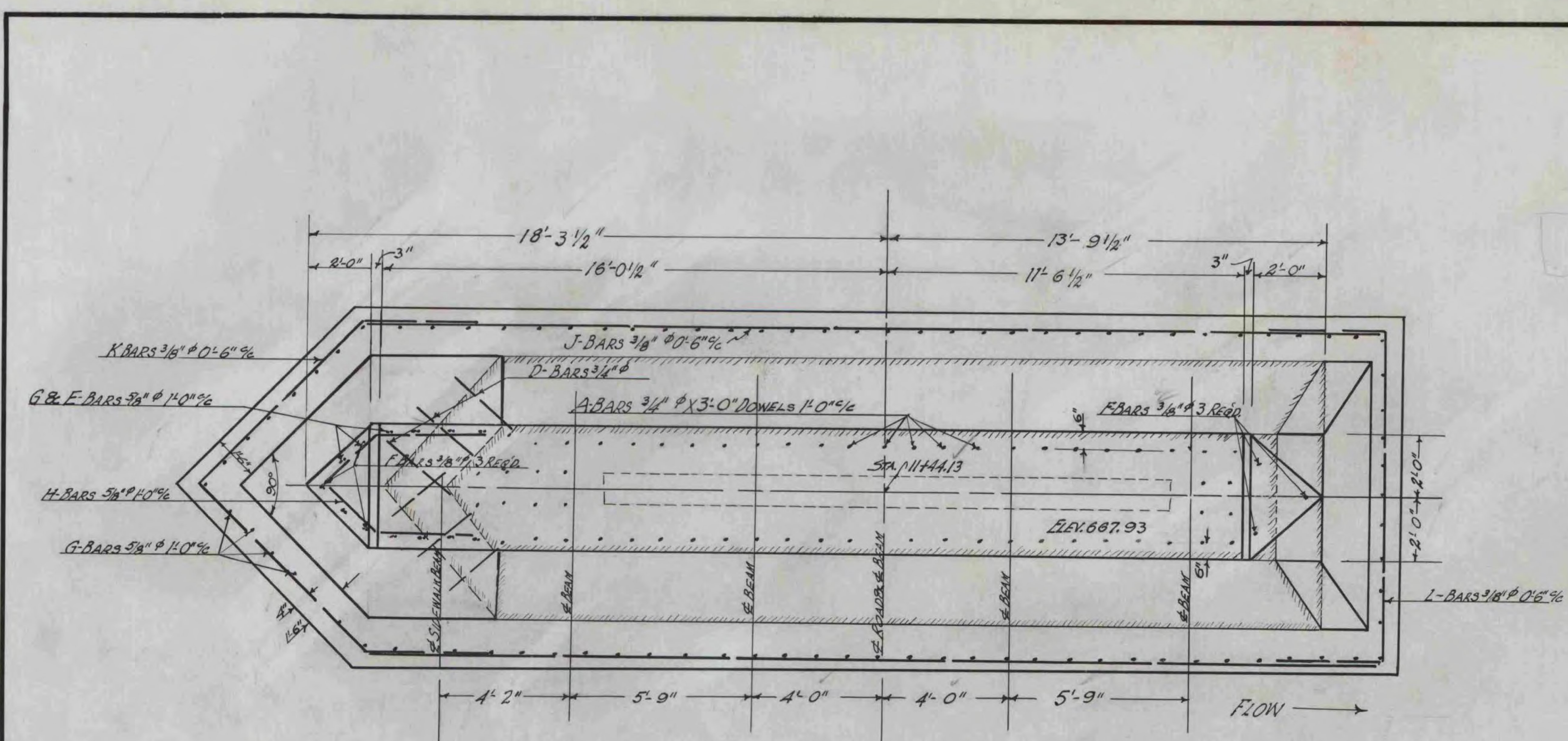


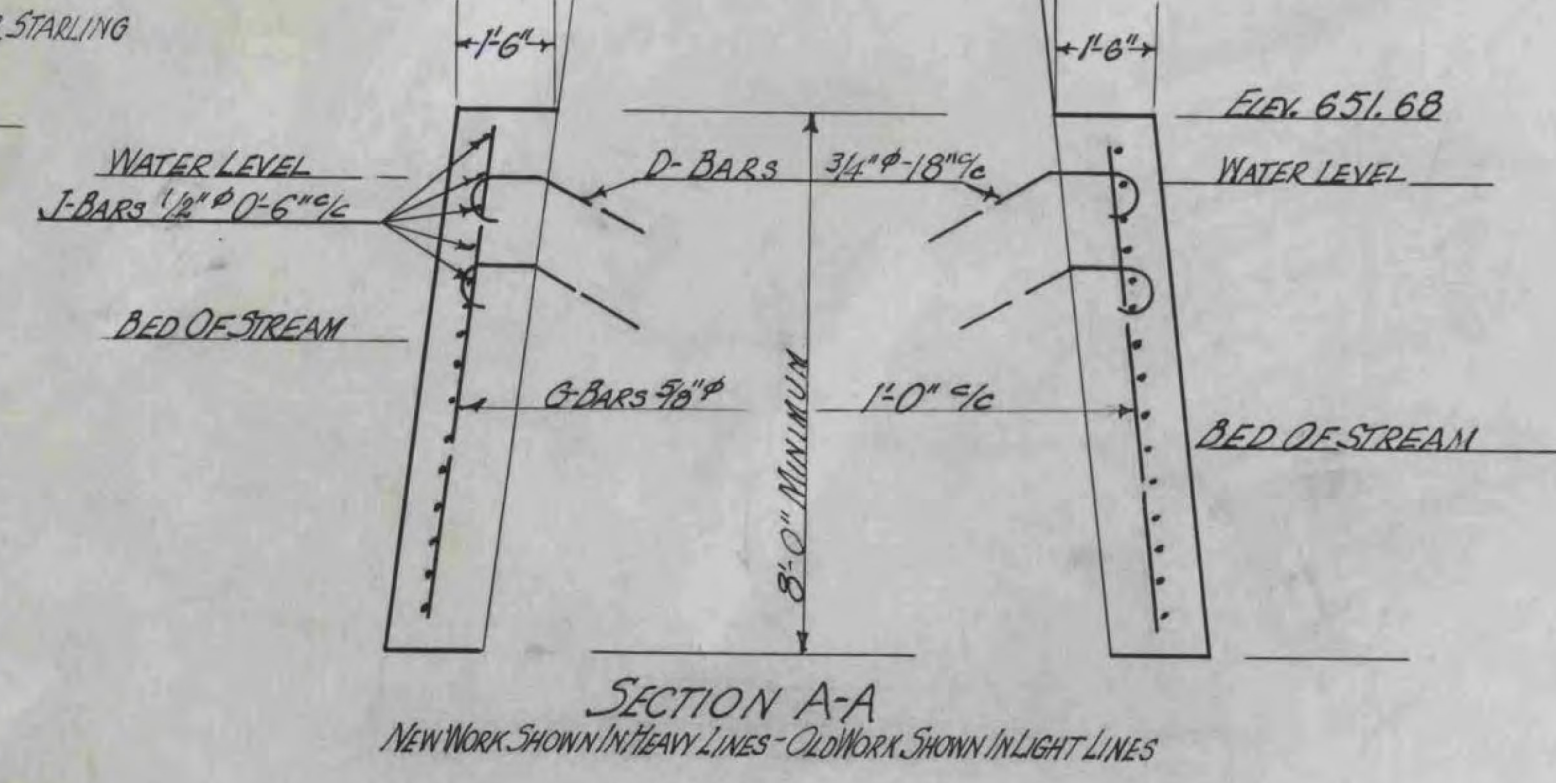
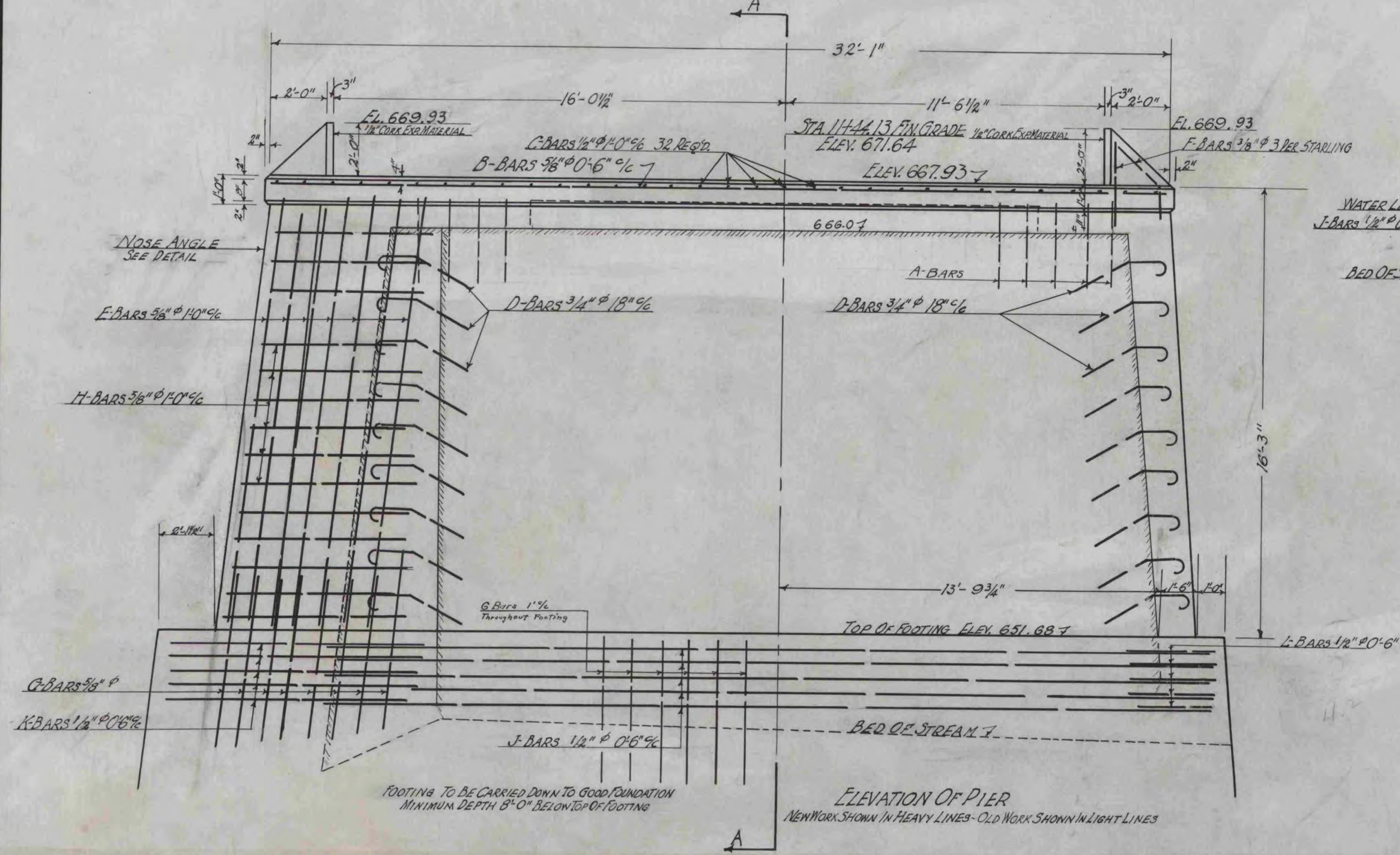
BRF 037-1(7)
1936 VILLIAGE BRIDGE PLANS
SHEET 150 OF 158
FOR REFERENCE ONLY

REINFORCING STEEL SCHEDULE

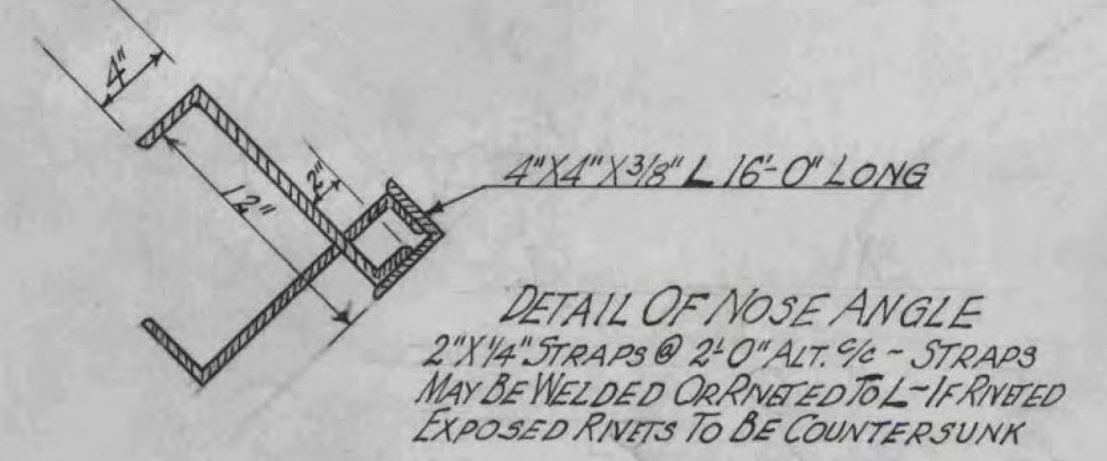
BAR	SIZE	LENGTH	NO. REQ'D	DETAIL
A	3/4"	3'-0"	60	STRAIGHT (DOWELS)
B	5/8"	17'-3"	14	STRAIGHT
C	1/2"	5'-4"	32	
D	3/4"	4'-4"	181	
E	3/8"	15'-0"	14	STRAIGHT
F	3/8"	3'-0"	6	STRAIGHT - BEND TO FIT IN FIELD
G	5/8"	5'-0"	104	STRAIGHT
H	5/8"	12'-0"	15	STRAIGHT - BEND TO FIT IN FIELD
J	1/2"	17'-0"	60	STRAIGHT
K	1/2"	18'-0"	15	STRAIGHT - BEND TO FIT IN FIELD
L	1/2"	16'-0"	15	STRAIGHT - BEND TO FIT IN FIELD



PLAN OF PIER
 NEW WORK SHOWN IN HEAVY LINES - OLD WORK SHOWN IN LIGHT LINES



SECTION A-A
 NEW WORK SHOWN IN HEAVY LINES - OLD WORK SHOWN IN LIGHT LINES



Superseded by
 Sheet #4A

NOTE:
 THE COST OF DRILLING & GROUTING FOR DOWELS SHALL BE INCLUDED IN THE UNIT PRICE BID FOR CONCRETE CLASS 'B'.
 AT POINTS WHERE PIER IS UNDERMINED CONCRETE SHALL BE PLACED UNDER PIER AS DIRECTED BY THE ENGINEER.
 CONCRETE CLASS 'B' SHALL HAVE A CEMENT FACTOR OF NOT LESS THAN 1.5.
 FOOTING TO BE INSTALLED IN SECTIONS AS SHOWN. ONLY ONE SECTION TO BE EXCAVATED AND INSTALLED AT ONE TIME.
 NOSE ANGLE TO BE PAID FOR AT UNIT PRICE BID FOR REINFORCING STEEL.

DETAILS OF PIER
EAST MONTPELLIER
P.W.A. DOCKET No. 1020-B
 SCALE 3/8" = 1'
 JAN. 14, 1936

ESTIMATED QUANTITIES

CONCRETE CLASS 'B'	77 cu yds
REINFORCING STEEL	4040 lbs
STRUCTUR. EXCAVATION	38 cu yds

Surveyed by
 Designed by
 Drawn by P.R.S.
 Traced by P.R.S.
 Checked by W.E.P.
 Series P.W.A. No. 1020-B Filed
 Sheet 4 of 20 Sheets