

STATION	TYPE	WIDTH @ ROW
145+93 LT	PAVED	12'
146+40 RT	PAVED	18'
146+70 RT	GRAV. W/ 5' PAVED APRON	12'
146+83 LT	PAVED	21'
147+46 LT	PAVED	35'
148+44 RT	GRAV. W/ 5' PAVED APRON	15'
149+05 LT	5' PAVED APRON	24'
149+07 RT	GRAV. W/ 5' PAVED APRON	44'

900.640 - SPECIAL PROVISION (GR. APPROACH)
 (CONCRETE ENCASED DUCT BANK, 1-4 DUCTS)
 STA 145+75 - 145+86 RT

618.10 - PORTLAND CEMENT CONCRETE SIDEWALK, 5 INCH
 STA 145+75.0 - 145+85.1 LT
 STA 146+01.6 - 146+69.4 LT
 STA 146+94.7 - 147+26.5 LT
 STA 147+80.4 - 148+94.9 LT

618.11 - PORTLAND CEMENT CONCRETE SIDEWALK, 8 INCH
 STA 145+85.1 - 146+01.6 LT
 STA 146+69.4 - 146+94.7 LT
 STA 147+26.5 - 147+80.4 LT

900.640 - SPECIAL PROVISION
 (GRANITE BACK CURB)
 STA 145+99.50 - 146+71.4 LT

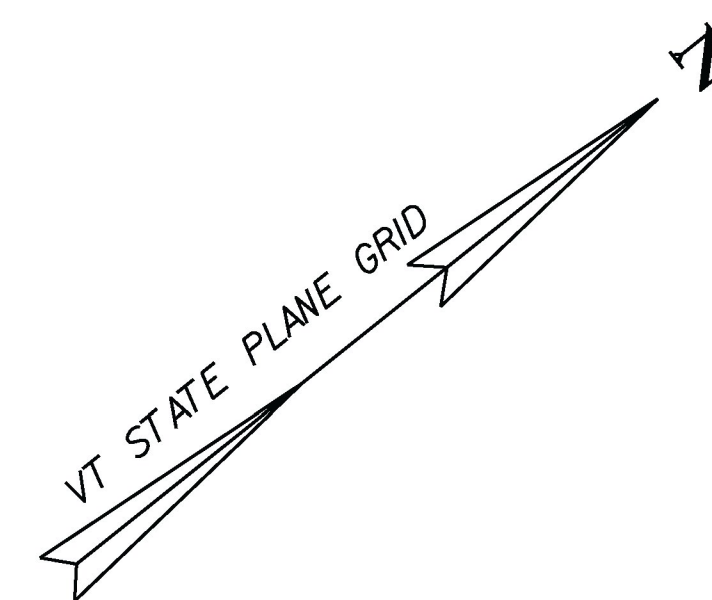
US 2 CURVE #2 DATA
 Delta = 10°01'10.93"
 D = 5°00'00.00"
 R = 1145.92'
 T = 100.45'
 L = 200.39'
 E = 4.39'
 BANKING = 0.021

616.28 - CAST-IN-PLACE
 CONCRETE CURB, TYPE B
 STA 145+75 - 145+85.1 LT
 STA 145+75 - 146+31.1 RT
 STA 146+01.6 - 146+69.4 LT
 STA 146+94.7 - 147+26.5 LT
 STA 146+96.3 - 148+36.7 RT
 STA 147+65.5 - 148+83.1 LT
 STA 148+51.8 - 148+75.6 RT

900.670 - SPECIAL PROVISION
 (PRECAST CONCRETE GRAVITY
 RETAINING WALL)
 STA 144+80 - 145+83 LT

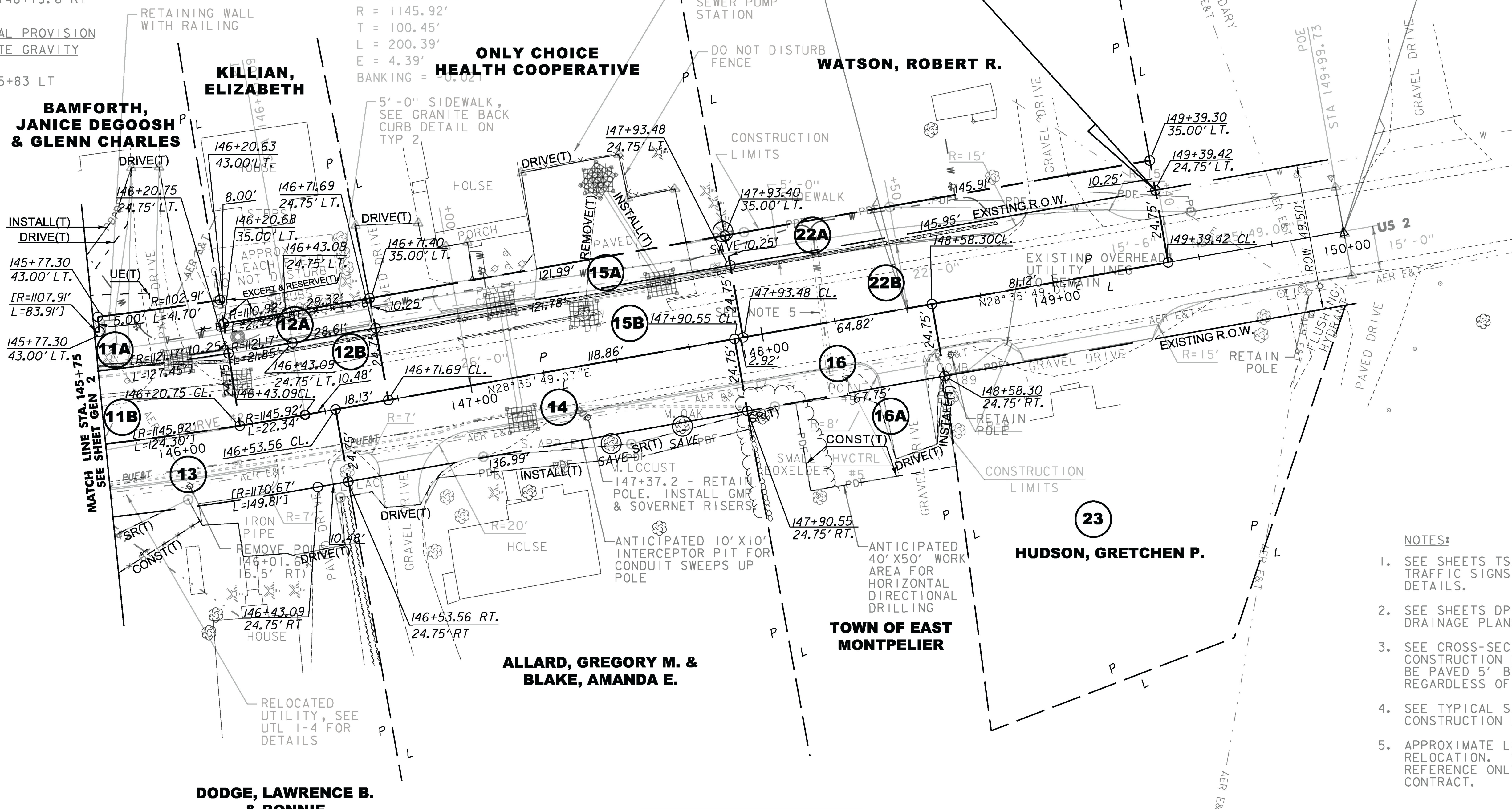
US 2 STA 148+50
 END PROJECT
 BEGIN APPROACH

END R.O.W. PROJECT
 EAST MONTPELIER BR# 037-1(7)
 STA. US RT2 149+39.42, 24.75' LT



N/F
 ROLAND, TY C.
 & NANCY L.

US 2 STA 150+00
 END APPROACH

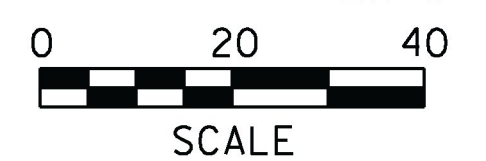


- NOTES:
1. SEE SHEETS TSL-1 THROUGH TSL-4 TRAFFIC SIGNS, AND PAVEMENT MARKING DETAILS.
 2. SEE SHEETS DP-1 THROUGH DP-8 FOR DRAINAGE PLANS AND DETAILS.
 3. SEE CROSS-SECTION SHEETS FOR DRIVEWAY CONSTRUCTION DETAILS. ALL DRIVES SHALL BE PAVED 5' BEYOND THE EDGE OF PAVEMENT REGARDLESS OF DRIVEWAY MATERIAL.
 4. SEE TYPICAL SECTION SHEETS FOR APPROACH CONSTRUCTION DETAILS.
 5. APPROXIMATE LOCATION OF WATER LINE RELOCATION. WATER LINE SHOWN FOR REFERENCE ONLY AND IS NOT PART OF THIS CONTRACT.

LINES SHOWN ON THIS PLAN AS EXISTING PROPERTY LINES P/L ARE BELIEVED TO BE ACCURATE BUT SHOULD NOT BE RELIED UPON FOR PURPOSES UNRELATED TO THE STATE OF VERMONT'S ACQUISITION OF LAND AND RIGHTS FOR THIS PROJECT.

FOR R.O.W. USE ONLY

THIS PROJECT SUBJECT TO STORMWATER PERMIT #4251-INDS.R



PROJECT NAME:	EAST MONTPELIER	PLOT DATE:	25-JAN-2016
PROJECT NUMBER:	BRF 037-1(7)	DRAWN BY:	T. POLK
FILE NAME:	r98b252.lay4.dgn	CHECKED BY:	R. CLOUTIER
PROJECT LEADER:	M. SARGENT	ROW LAYOUT SHEET	4 OF 4
DESIGNED BY:	STANTEC	SHEET	147 OF 158