

CONSTRUCT DRIVE

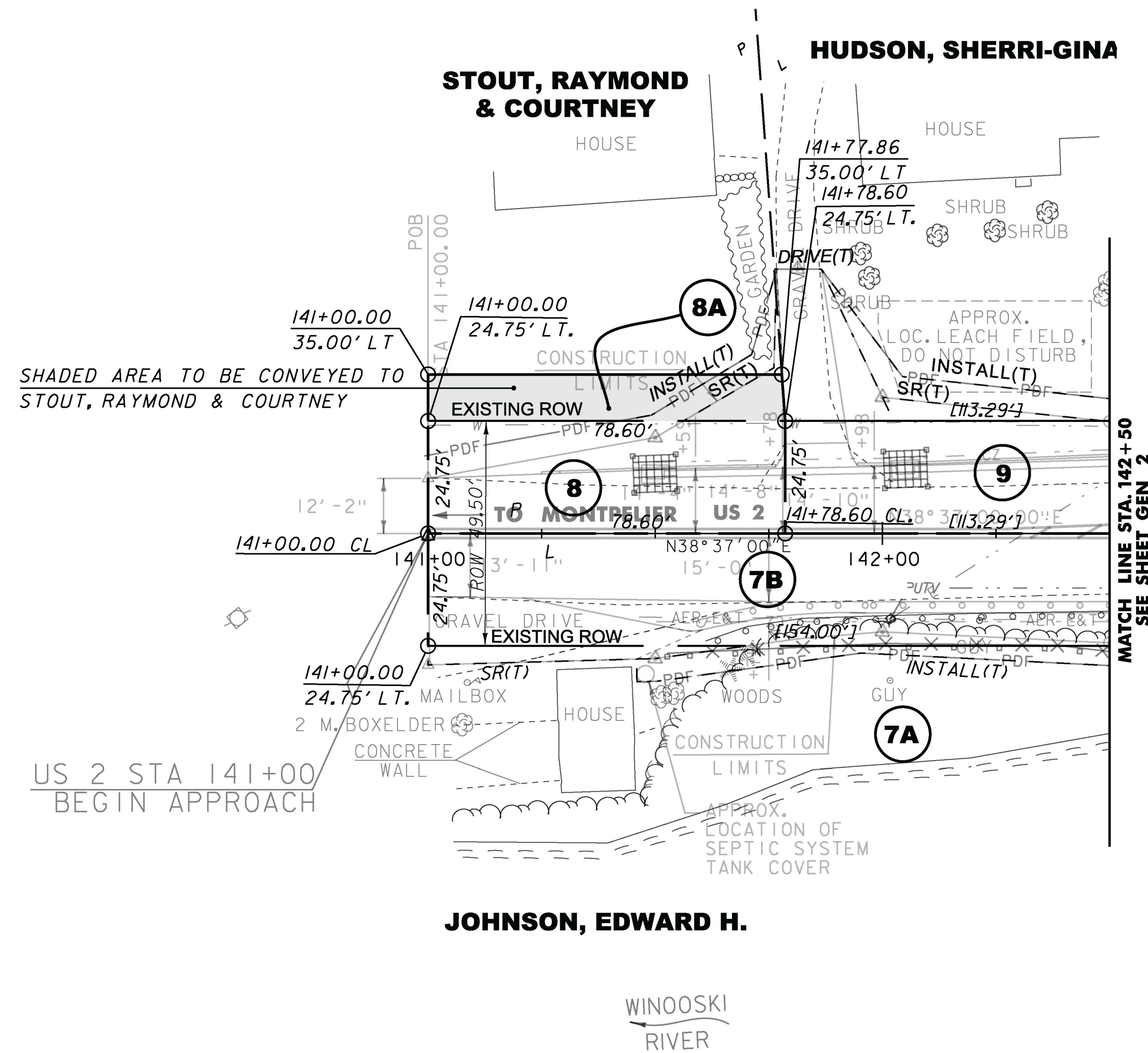
STATION	TYPE	WIDTH @ ROW
141+83 LT	GRAV. W/ 5' PAVED APRON	12'

621.80 - REMOVAL AND DISPOSAL OF GUARDRAIL
 STA 141+61 - 142+50 RT

616.28 - CAST-IN-PLACE CONCRETE CURB, TYPE B
 STA 141+25.0 - 141+76.5 LT
 STA 141+94.4 - 142+50.0 LT

621.205 - STEEL BEAM GUARDRAIL, GALVANIZED W/ 8 FEET POSTS
 STA 141+97 - 142+50 RT

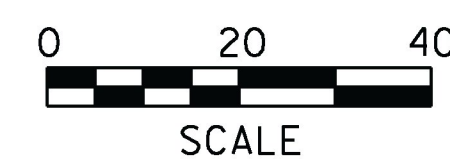
621.50 - MANUFACTURED TERMINAL END SECTION, FLARED
 STA 141+59 - 141+97 RT



NOTES:

1. SEE SHEETS TSL-1 THROUGH TSL-4 TRAFFIC SIGNS, AND PAVEMENT MARKING DETAILS.
2. SEE SHEETS DP-1 THROUGH DP-8 FOR DRAINAGE PLANS AND DETAILS.
3. SEE CROSS-SECTION SHEETS FOR DRIVEWAY CONSTRUCTION DETAILS. ALL DRIVES SHALL BE PAVED 5' BEYOND THE EDGE OF PAVEMENT REGARDLESS OF DRIVEWAY MATERIAL.
4. SEE TYPICAL SECTION SHEETS FOR APPROACH CONSTRUCTION DETAILS.

THIS PROJECT SUBJECT TO STORMWATER PERMIT #4251-INDS.R



FOR R.O.W. USE ONLY

LINES SHOWN ON THIS PLAN AS EXISTING PROPERTY LINES P/L ARE BELIEVED TO BE ACCURATE BUT SHOULD NOT BE RELIED UPON FOR PURPOSES UNRELATED TO THE STATE OF VERMONT'S ACQUISITION OF LAND AND RIGHTS FOR THIS PROJECT.

PROJECT NAME: EAST MONTPELIER	PLOT DATE: 20-AUG-2015
PROJECT NUMBER: BRF 037-I(7)	DRAWN BY: T. POLK
FILE NAME: r98b252_lay3.dgn	CHECKED BY: R. CLOUTIER
DESIGNED BY: STANTEC	SHEET 146 OF 158
ROW LAYOUT SHEET 3 OF 4	