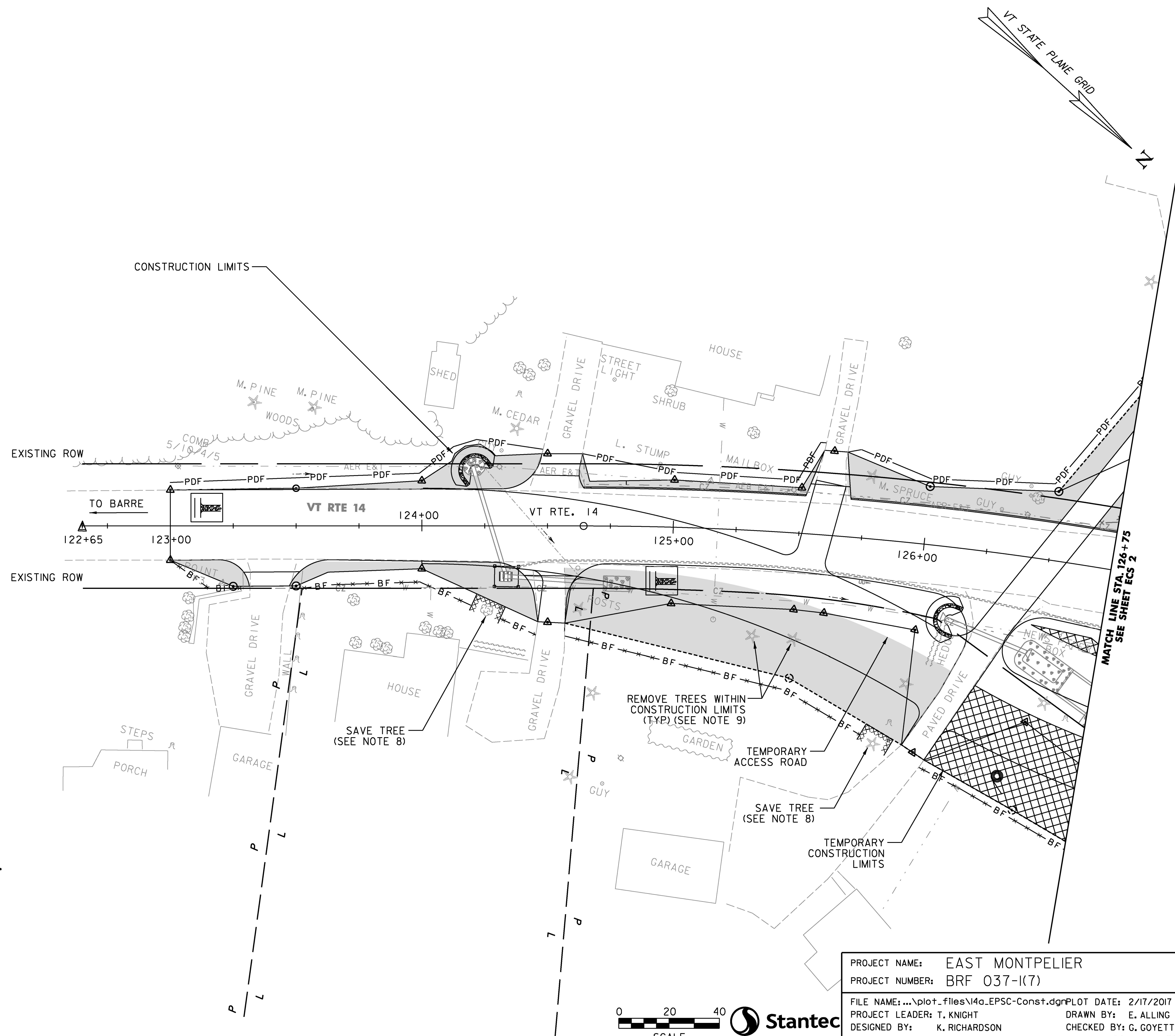


LEGEND

	DRAINAGE FLOW DIRECTION
	AERIAL ELECTRIC & TELEPHONE
	WATER LINE
	PHASE I ARCHAEOLOGICAL SURVEY WORK AREA
	PROPERTY LINE
	RIPARIAN BUFFER ZONE
	LIMITS OF SOIL DISTURBANCE
	TEMPORARY STONE CHECK DAMS
	BARRIER FENCE, WOVEN WIRE REINFORCED
	GEOTEXTILE FOR FILTER CURTAIN
	SILT FENCE, WOVEN WIRE REINFORCED
	TEMPORARY EROSION MATTING
	FILTER BAG/SEDIMENT TRAP
	INLET PROTECTION DEVICE, TYPE I (PIPE INLET PROTECTION)
	STABILIZED CONSTRUCTION ENTRANCE
	INLET PROTECTION DEVICE, TYPE I (FILTER FABRIC DROP INLET PROTECTION)
	SPECIAL PROVISION (INLET PROTECTION DEVICE, FILTER FIBER)

NOTES:

1. THESE PLANS SHOW A CONCEPTUAL EROSION CONTROL PLAN. THE CONTRACTOR MUST SUBMIT A TEMPORARY EROSION CONTROL PLAN FOR APPROVAL.
2. TEMPORARY EROSION CONTROL MEASURES ARE CONCEPTUALLY SHOWN. THE CONTRACTOR MAY RELOCATE TEMPORARY MEASURES TO IMPROVE EROSION CONTROL WITH APPROVAL OF THE RESIDENT ENGINEER AND ON SITE COORDINATOR. SILT FENCE SHALL NOT BE INSTALLED ACROSS CONTOURS.
3. THE CONTRACTOR SHALL USE OTHER TEMPORARY EROSION CONTROL MEASURES AS NECESSITATED BY THE SEQUENCE OF CONSTRUCTION OR AS DIRECTED BY THE RESIDENT ENGINEER AND ON SITE COORDINATOR.
4. REFER TO TEMPORARY EROSION CONTROL DETAIL SHEETS FOR ADDITIONAL DETAILS.
5. SEE CROSS-SECTIONS FOR PROPOSED TOPOGRAPHY.
6. INLET PROTECTION SHALL BE INSTALLED ON EXISTING DRAINAGE INLETS WITHIN PROJECT LIMITS. INLET PROTECTION SHALL BE REMOVED ONLY AFTER EXISTING COLLECTION SYSTEM IS NO LONGER FUNCTIONAL.
7. AN ESTIMATED QUANTITY OF 500 FEET OF PROJECT DEMARCATION FENCE (PDF) HAS BEEN INCLUDED TO DELINEATE THE LIMITS OF SOIL DISTURBANCE. APPROXIMATE LOCATIONS FOR PROPOSED PDF ARE SHOWN, HOWEVER WHERE THE PDF CROSSES A RESIDENTS PROPERTY, THE FENCE SHALL ONLY BE PLACED AFTER CONSULTING WITH THE RESPECTIVE PROPERTY OWNER AND THE ENGINEER. OTHER MEANS FOR MARKING THE BOUNDARY CAN BE USED IN LIEU OF THE FENCING SUCH AS PAINT AS DIRECTED BY THE ENGINEER.
8. TREE PROTECTION PER STANDARD SPECIFICATION 656.10. PAID AS ITEM 656.85 TREE PROTECTION.
9. TREES TO BE REMOVED SHALL BE PAID AS ITEM 201.10 CLEARING AND GRUBBING, INCLUDING INDIVIDUAL TREES AND STUMPS. SEE SPECIAL PROVISIONS FOR MORE INFORMATION ON TIME OF YEAR CLEARING RESTRICTIONS DUE TO NORTHERN LONG-EARED BAT PROTECTION REQUIREMENTS.



PROJECT NAME:	EAST MONTPELIER
PROJECT NUMBER:	BRF 037-1(7)
FILE NAME: ... \plot_files\14a_EPSC-Const.dgr	PLOT DATE: 2/17/2017
PROJECT LEADER: T. KNIGHT	DRAWN BY: E. ALLING
DESIGNED BY: K. RICHARDSON	CHECKED BY: G. GOYETTE
EPSC CONST. SITE PLAN ECS 1	SHEET 128 OF 158