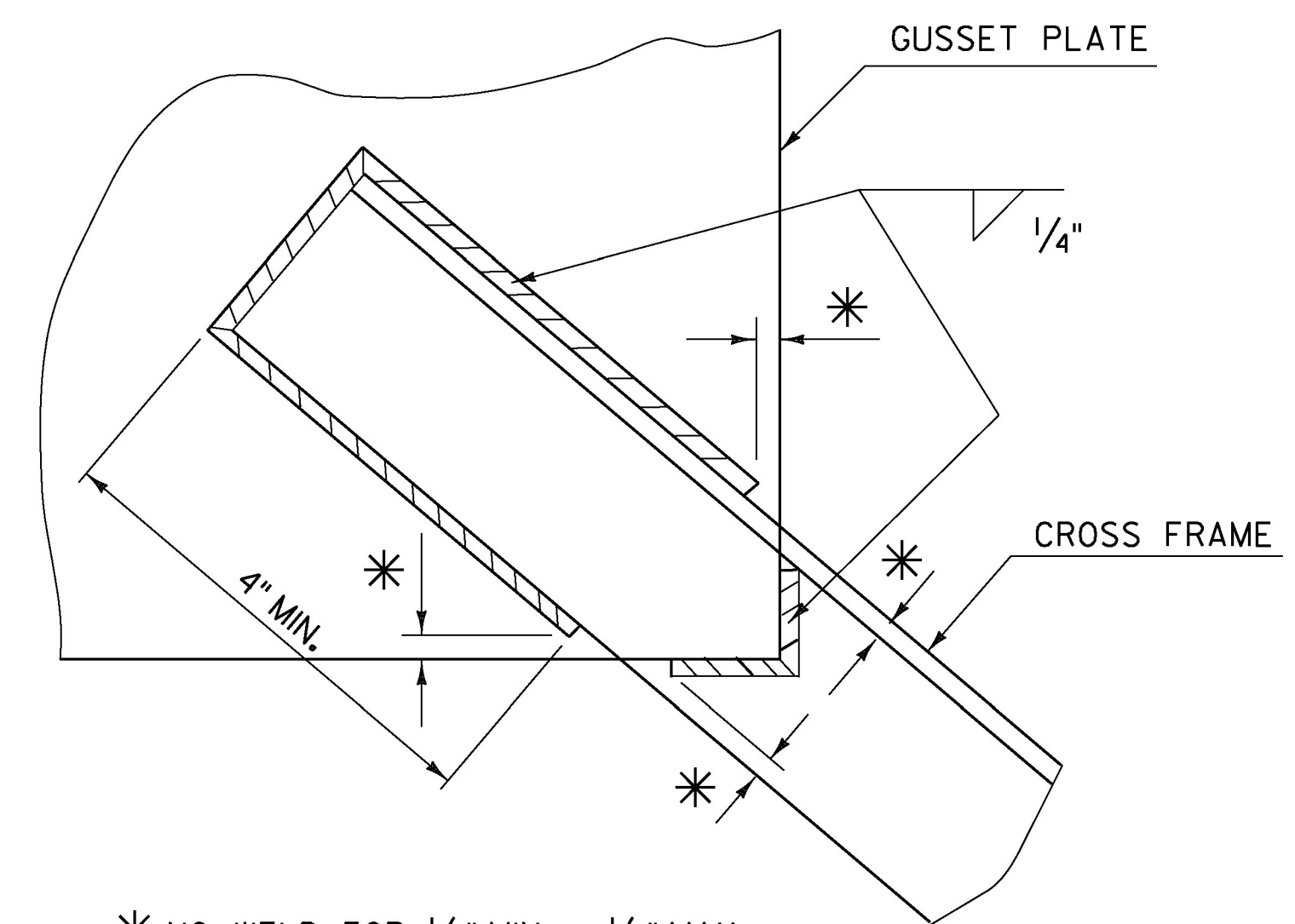


GI-G6 CAMBER DIAGRAM  
NOT TO SCALE

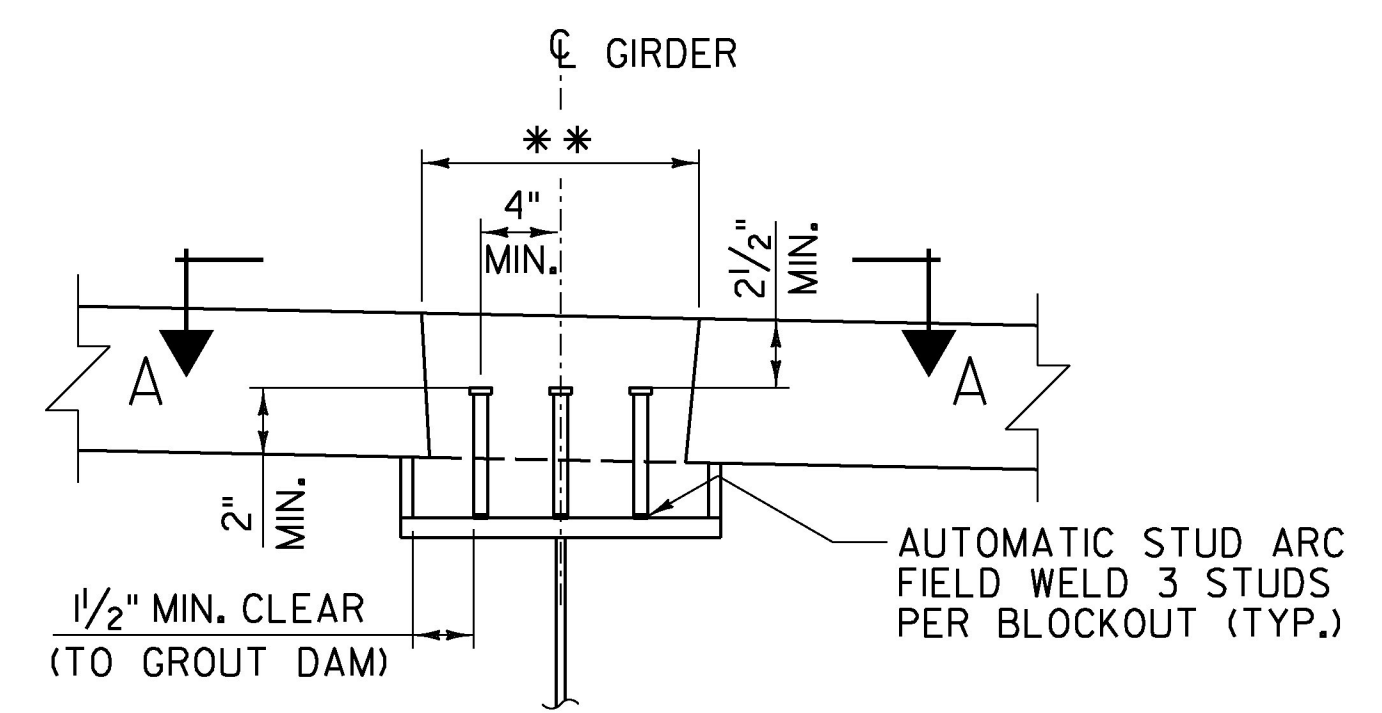


\* NO WELD FOR 1/4" MIN., 1/2" MAX.  
WELD LOCATION DETAIL  
AT CROSS FRAMES  
NOT TO SCALE

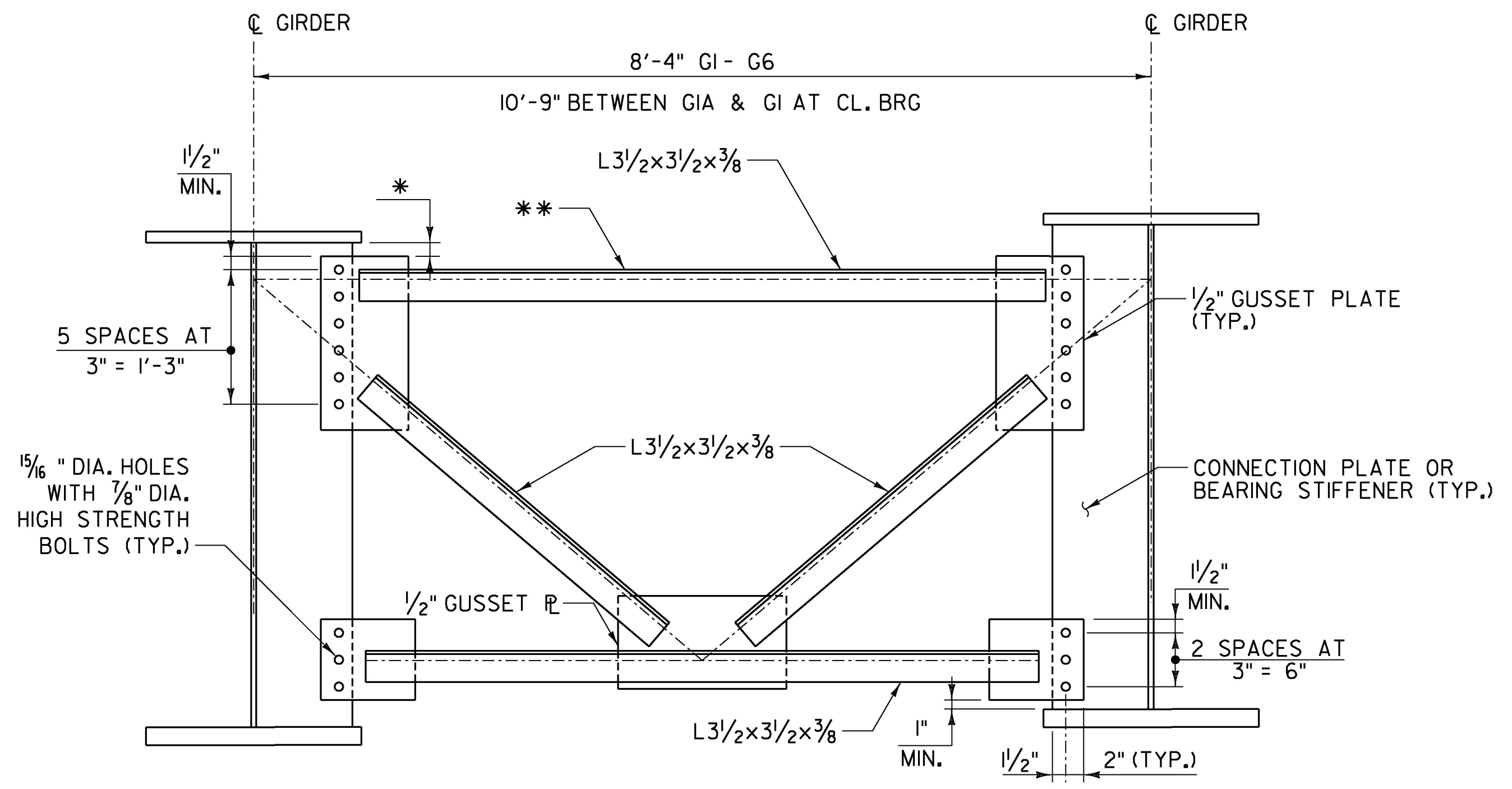
	SPAN 1			SPAN 2										SPAN 3		
	CL BRG. ABUT. 1	0.5	CL BRG. PIER 1	0.1	0.2	0.3	0.4	0.5	0.6	0.7	0.8	0.9	CL BRG. PIER 2	0.5	CL BRG. ABUT. 2	
STEEL DEFLECTION	7/16"	1/4"	0	-3/16"	-3/8"	-9/16"	-5/8"	-11/16"	-5/8"	-9/16"	-3/8"	-3/16"	0	1/4"	7/16"	
DECK DEFLECTION	13/8"	11/16"	0	-5/8"	-13/16"	-11/16"	-15/16"	-21/16"	-15/16"	-11/16"	-13/16"	-5/8"	0	11/16"	13/8"	
S.D.L. DEFLECTION	0	0	0	-1/16"	-3/16"	-1/4"	-3/8"	-3/8"	-3/8"	-1/4"	-3/16"	-1/16"	0	0	0	
TOTAL DEFLECTION	13/16"	15/16"	0	-7/8"	-13/4"	-21/2"	-215/16"	-31/8"	-215/16"	-21/2"	-13/4"	-7/8"	0	15/16"	113/16"	
CAMBER	-13/16"	-15/16"	0	7/8"	13/4"	21/2"	215/16"	31/8"	215/16"	21/2"	13/4"	7/8"	0	-15/16"	-113/16"	

NOTES:

1. THE GIRDER IS FREE TO MOVE VERTICALLY AT THE ABUTMENTS UNDER THE STEEL AND DECK DEAD LOAD AND IS TO BE RESTRAINED FROM UPLIFT FOR APPLICATION OF SUPERIMPOSED DEAD LOADS.
2. S.D.L. = SUPERIMPOSED DEAD LOAD.

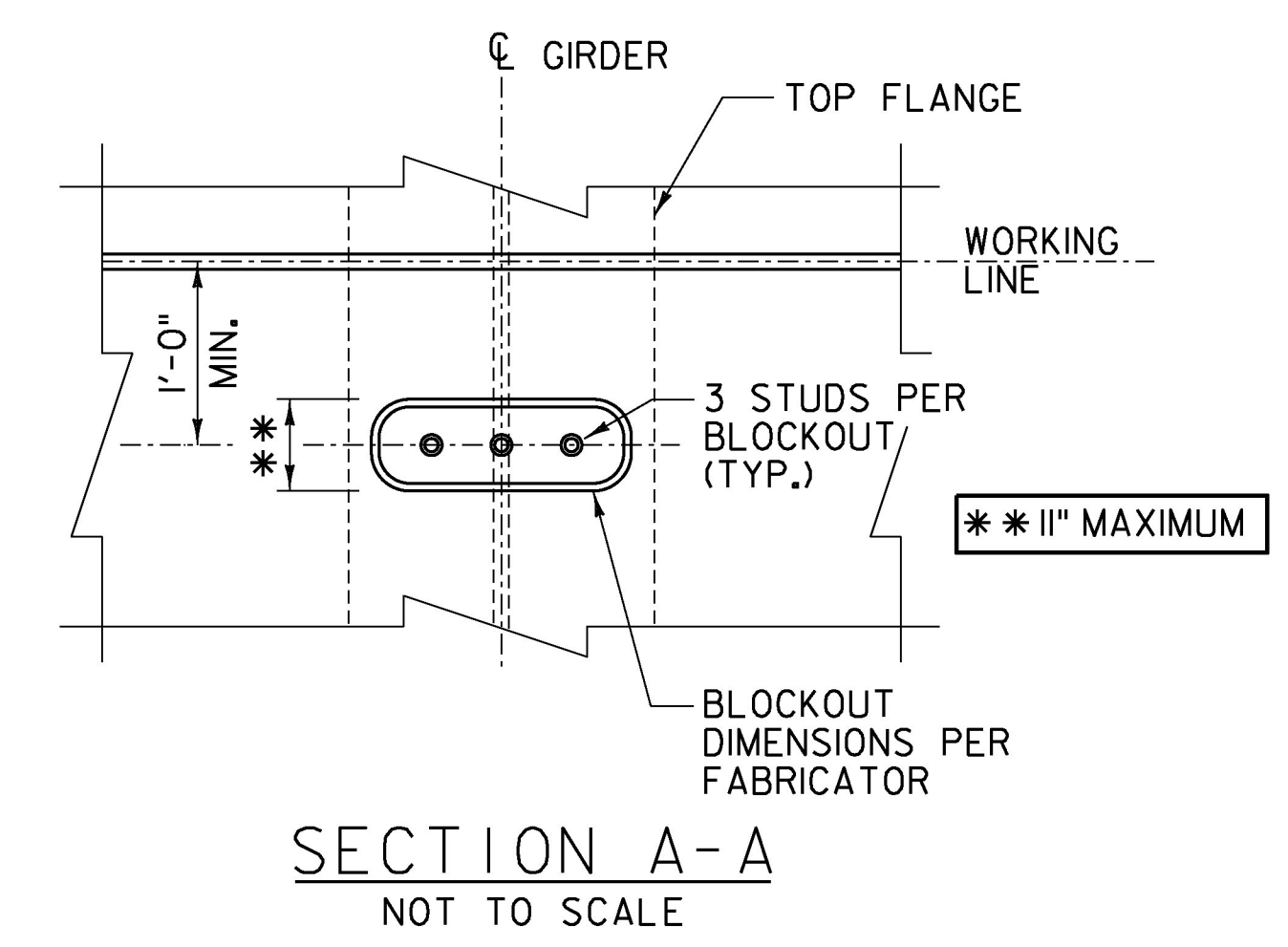


SHEAR CONNECTOR DETAIL  
SCALE: 1" = 1'-0"



TYPICAL CROSS FRAMES C1 & C2 DETAIL  
SCALE: 1" = 1'-0"

- \* 1/2" MIN. FOR C1, 6" MIN. FOR C2
- \*\* LEVEL FOR C1, SLOPE PARALLEL TO DECK FOR C2



SECTION A-A  
NOT TO SCALE

PROJECT NAME:	EAST MONTEPELIER	PLOT DATE:	2/17/2017
PROJECT NUMBER:	BRF 037-(17)	DRAWN BY:	J. SOTER
FILE NAME:	z98b252fra.dgn	DESIGNED BY:	T. KNIGHT
PROJECT LEADER:	T. KNIGHT	CHECKED BY:	P. GREENBERG
DESIGNED BY:	T. KNIGHT	GIRDER DETAILS 4	SHEET 83 OF 158

