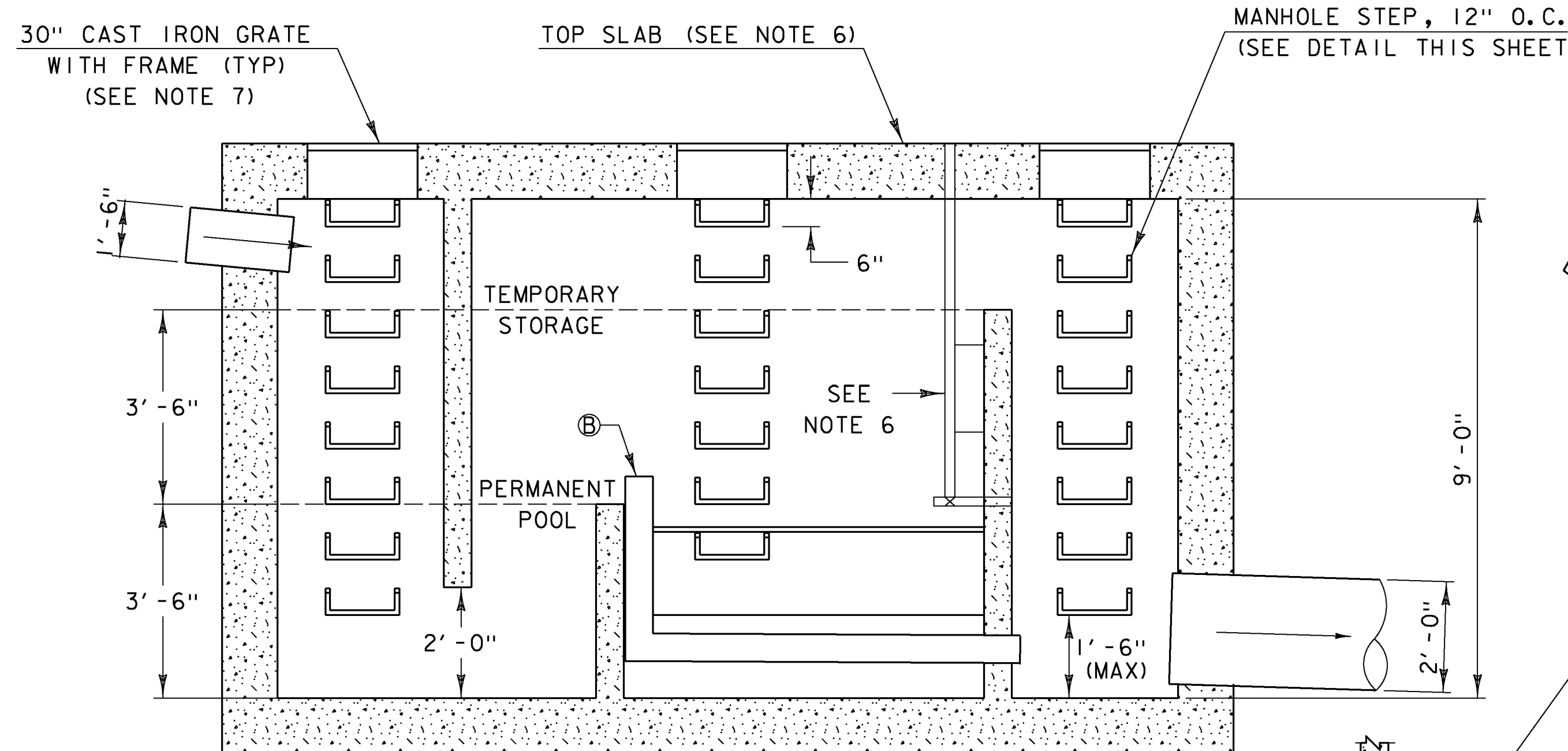


PLAN VIEW

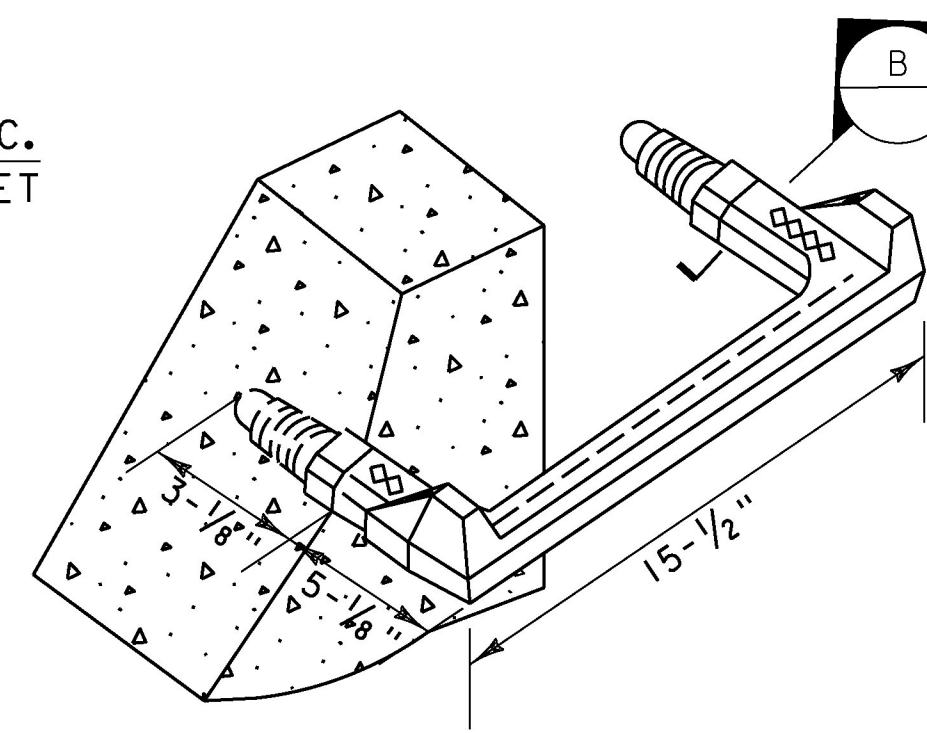
SAND FILTER NOTES:

1. VEGETATED ACCESS SLOPES TO THE SAND FILTER TO BE A MAXIMUM OF 10%.
2. ABSOLUTELY NO RUNOFF IS TO ENTER THE FILTER UNTIL ALL CONTRIBUTING DRAINAGE AREAS HAVE BEEN STABILIZED.
3. THE SURFACE OF THE FILTER BED SHALL BE COMPLETELY LEVEL.
4. SAND FILTER SHALL BE CLEARLY DELINEATED WITH A SIGN SO THAT IT CAN BE LOCATED WHEN MAINTENANCE IS DUE.
5. A DEWATERING GATE VALVE SHALL BE LOCATED ONE INCH ABOVE THE TOP OF THE FILTER BED.
6. LIFT RINGS ARE TO BE SUPPLIED TO REMOVE/REPLACE TOP SLABS.
7. MANHOLES TO BE GRATED TO ALLOW FOR PROPER VENTILATION AND EASE IN VISUAL INSPECTION.
8. ALL CONCRETE COMPONENTS SHALL CONFORM TO SECTION 540.
9. SAND FILTER SHALL BE DESIGNED AND STAMPED BY A STATE OF VERMONT LICENSED ENGINEER. FABRICATION DRAWINGS SHALL BE SUBMITTED TO THE ENGINEER FOR REVIEW IN ACCORDANCE WITH SECTION 105.

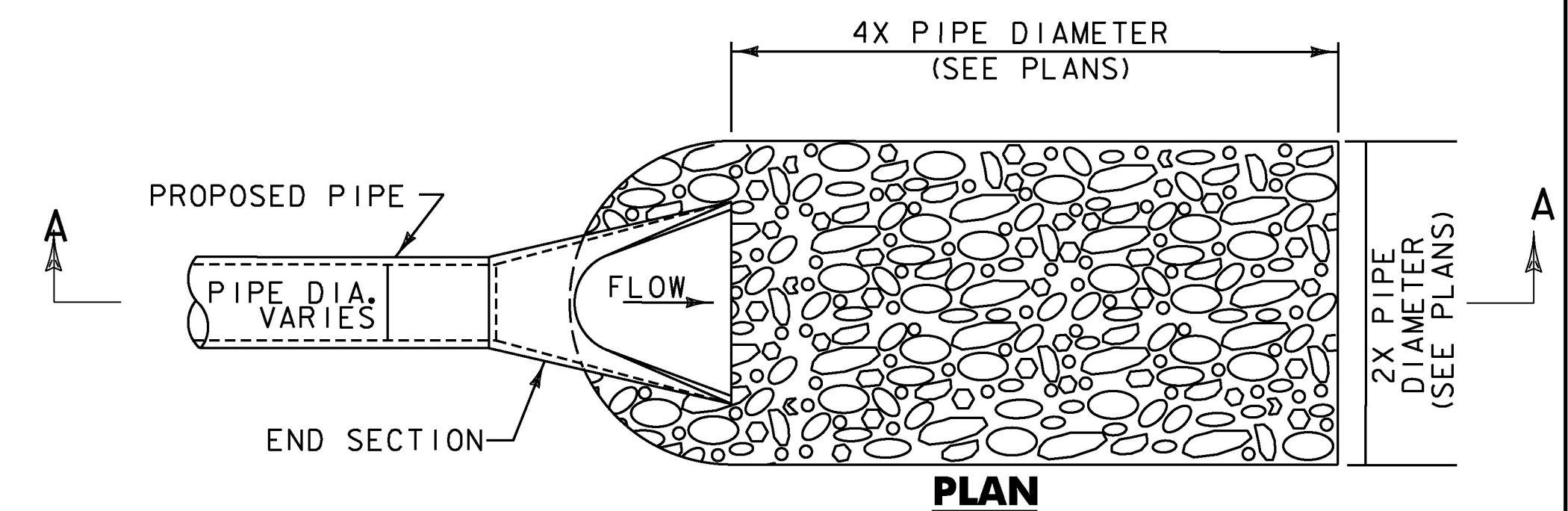
PARAMETER	SPECIFICATION	SIZE	NOTES
GEOTEXTILE FABRIC	ASTM D-4833 (PUNCTURE STRENGTH - 125 LB.) ASTM D-1117 (MULLEN BURST STRENGTH - 400 PSI) ASTM D-4632 (TENSILE STRENGTH - 300 LB.)	0.08" THICK EQUIVALENT OPENING SIZE OF #80 SIEVE	MUST MAINTAIN 125 GPM PER SQUARE FOOT FLOW RATE. NOTE: A 4" PEA GRAVEL LAYER MAY BE SUBSTITUTED FOR GEOTEXTILES MEANT TO SEPARATE SAND FILTER LAYERS.



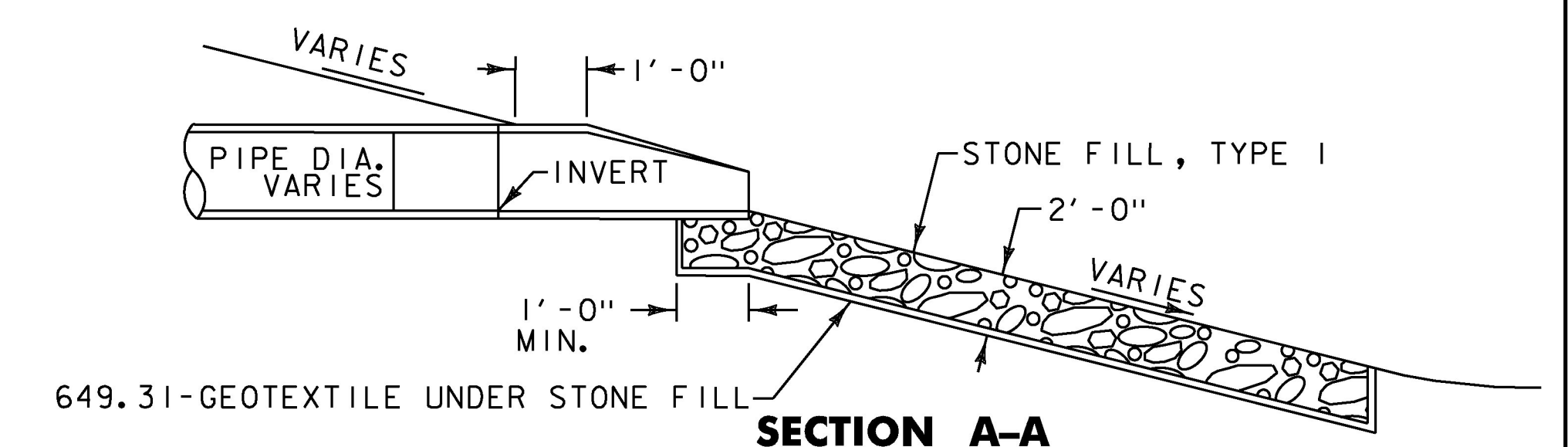
PROFILE VIEW



MANHOLE STEP DETAIL
NOT TO SCALE



PLAN

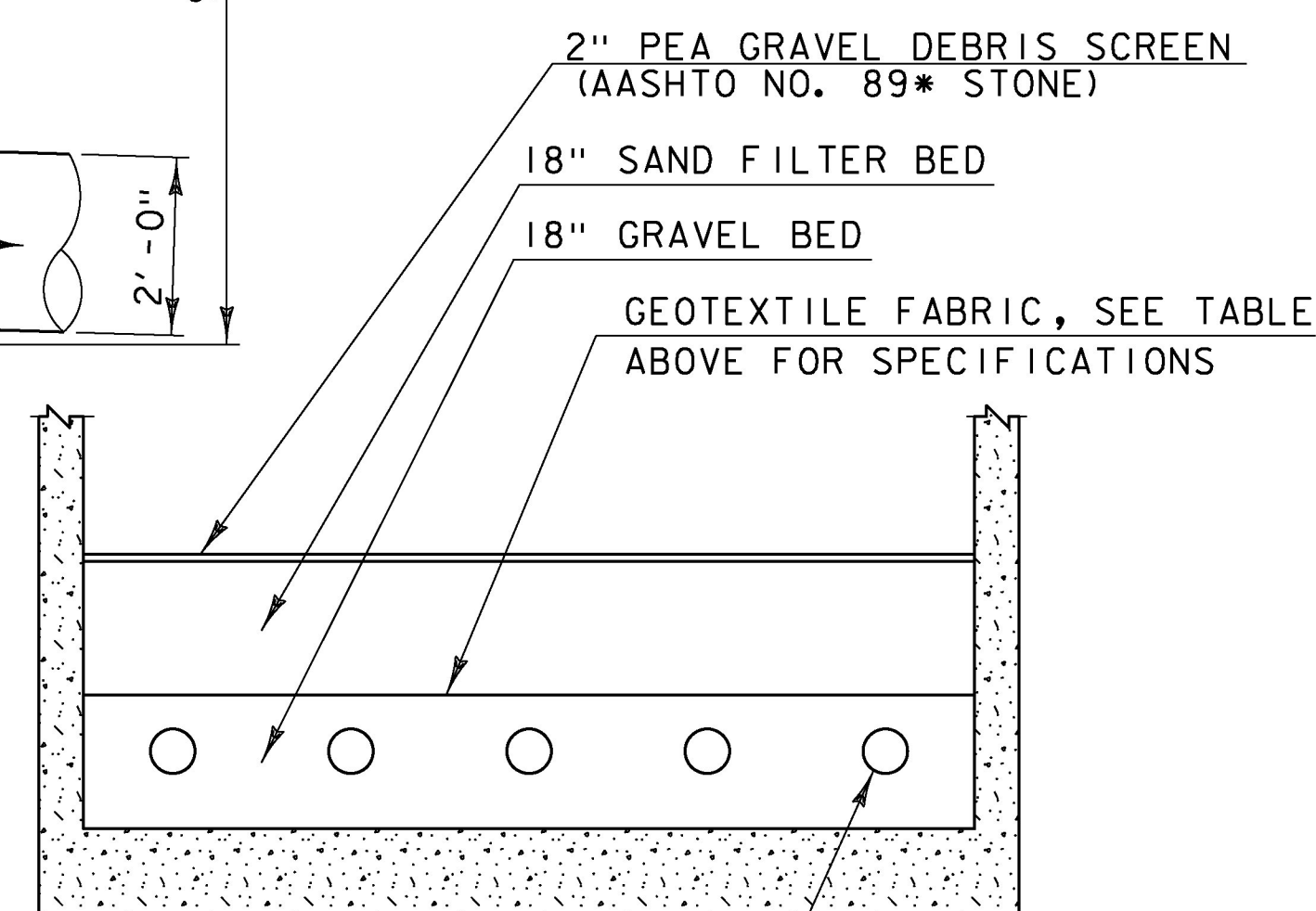


SECTION A-A
STORM DRAIN OUTLET PROTECTION
NOT TO SCALE

- Ⓐ 6" UNDERDRAIN PIPES ARE PLACED ON A .5% SLOPE, SPACED 2' ON CENTER
- Ⓑ 6" FLUSHING BASINS LOCATED AT START OF EACH UNDERDRAIN RUN, EXTEND .5' FROM TOP OF RETENTION WALL

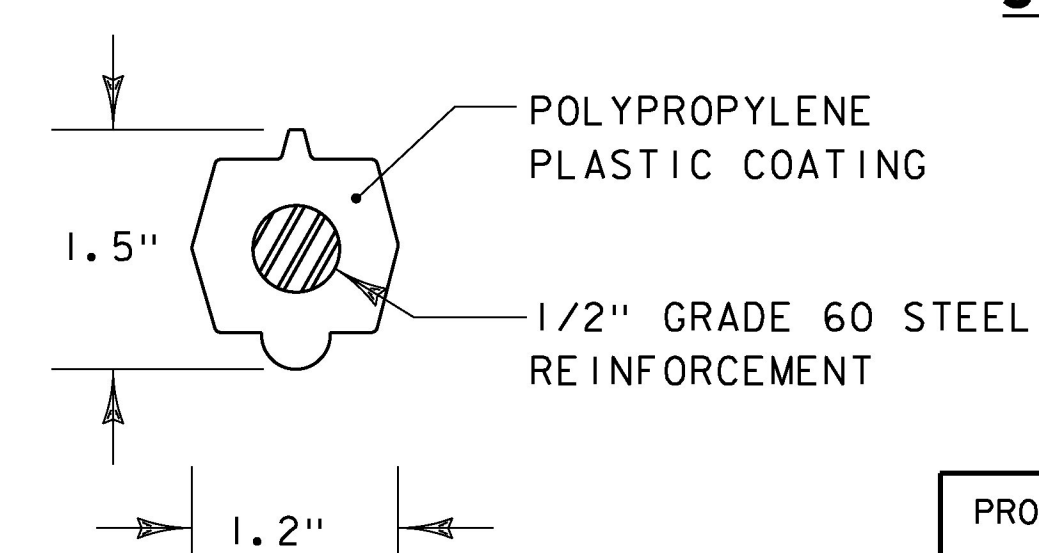
SAND FILTER DETAIL

NOT TO SCALE



SECTION A-A
NOT TO SCALE

* SEE AASHTO STANDARD SPECIFICATIONS FOR TRANSPORTATION MATERIALS AND METHODS OF SAMPLING AND TESTING, M43 SPECIFICATIONS FOR STANDARD SIZES OF PROCESSED AGGREGATE.



SECTION B-B
NOT TO SCALE



PROJECT NAME:	EAST MONTPELIER	PLOT DATE:	2/17/2017
PROJECT NUMBER:	BRF 037-(17)	DRAWN BY:	E. ALLING
FILE NAME:	20_Strm Mana.dgn	CHECKED BY:	G. GOYETTE
DESIGNED BY:	K. RICHARDSON		
STORMWATER MGMT DETAILS SWM 3		SHEET	41 OF 158