

STATION	TYPE	WIDTH @ ROW
145+93 LT	PAVED	12'
146+40 RT	PAVED	18'
146+70 RT	GRAV. W/ 5' PAVED APRON	12'
146+83 LT	PAVED	21'
147+46 LT	PAVED	35'
148+44 RT	GRAV. W/ 5' PAVED APRON	15'
149+05 LT	5' PAVED APRON	24'
149+07 RT	GRAV. W/ 5' PAVED APRON	44'

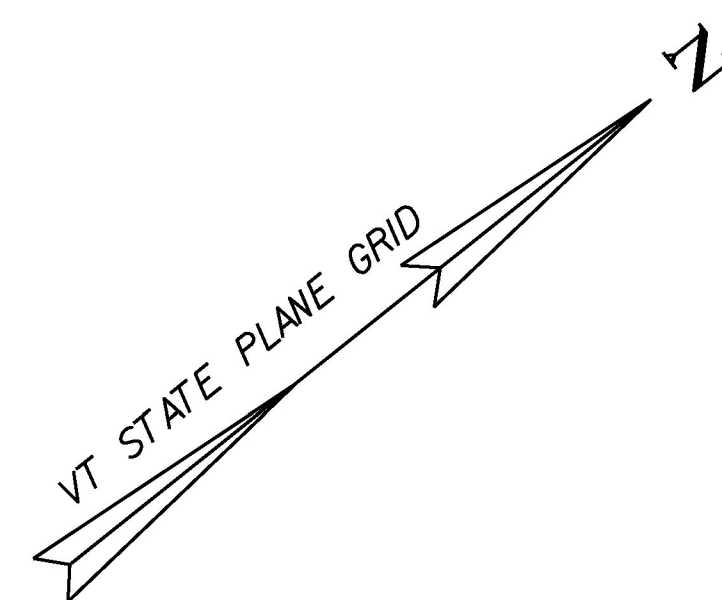
DRIVEWAY LAYOUT TABLE		
POINT	STATION/OFFSET	
LP-1	145+96.00, 91.61'	LT
LP-2	146+06.16, 90.54'	LT
LP-3	146+71.08, 60.07'	LT
LP-4	146+92.06, 57.18'	LT
LP-5	147+07.35, 47.86'	LT
LP-6	147+29.41, 67.90'	LT
LP-7	147+62.81, 68.29'	LT
LP-8	147+63.38, 53.04'	LT
LP-9	147+79.52, 53.42'	LT
LP-10	149+36.06, 15.53'	LT
LP-11	146+03.43, 31.39'	RT
LP-12	146+15.22, 32.40'	RT

DRIVEWAY LAYOUT TABLE (CONTINUED)		
POINT	STATION/OFFSET	
LP-13	146+15.23, 43.94'	RT
LP-14	146+48.80, 45.61'	RT
LP-15	146+55.31, 15.00'	RT
LP-16	146+57.57, 15.00'	RT
LP-17	146+64.25, 35.48'	RT
LP-18	146+76.18, 36.65'	RT
LP-19	148+28.56, 15.00'	RT
LP-20	148+37.24, 49.48'	RT
LP-21	148+51.81, 46.97'	RT
LP-22	148+59.81, 15.00'	RT
LP-23	149+43.81, 15.00'	RT

618.10 - PORTLAND CEMENT  
CONCRETE SIDEWALK, 5 INCH  
STA 145+75.0 - 145+85.1 LT  
STA 146+01.6 - 146+69.4 LT  
STA 146+94.7 - 147+26.5 LT  
STA 147+80.4 - 148+94.9 LT

618.11 - PORTLAND CEMENT  
CONCRETE SIDEWALK, 8 INCH  
STA 145+85.1 - 146+01.6 LT  
STA 146+69.4 - 146+94.7 LT  
STA 147+26.5 - 147+80.4 LT

900.640 - SPECIAL PROVISION  
(24" GRANITE BACK CURB)  
STA 145+99.50 - 146+71.4 LT

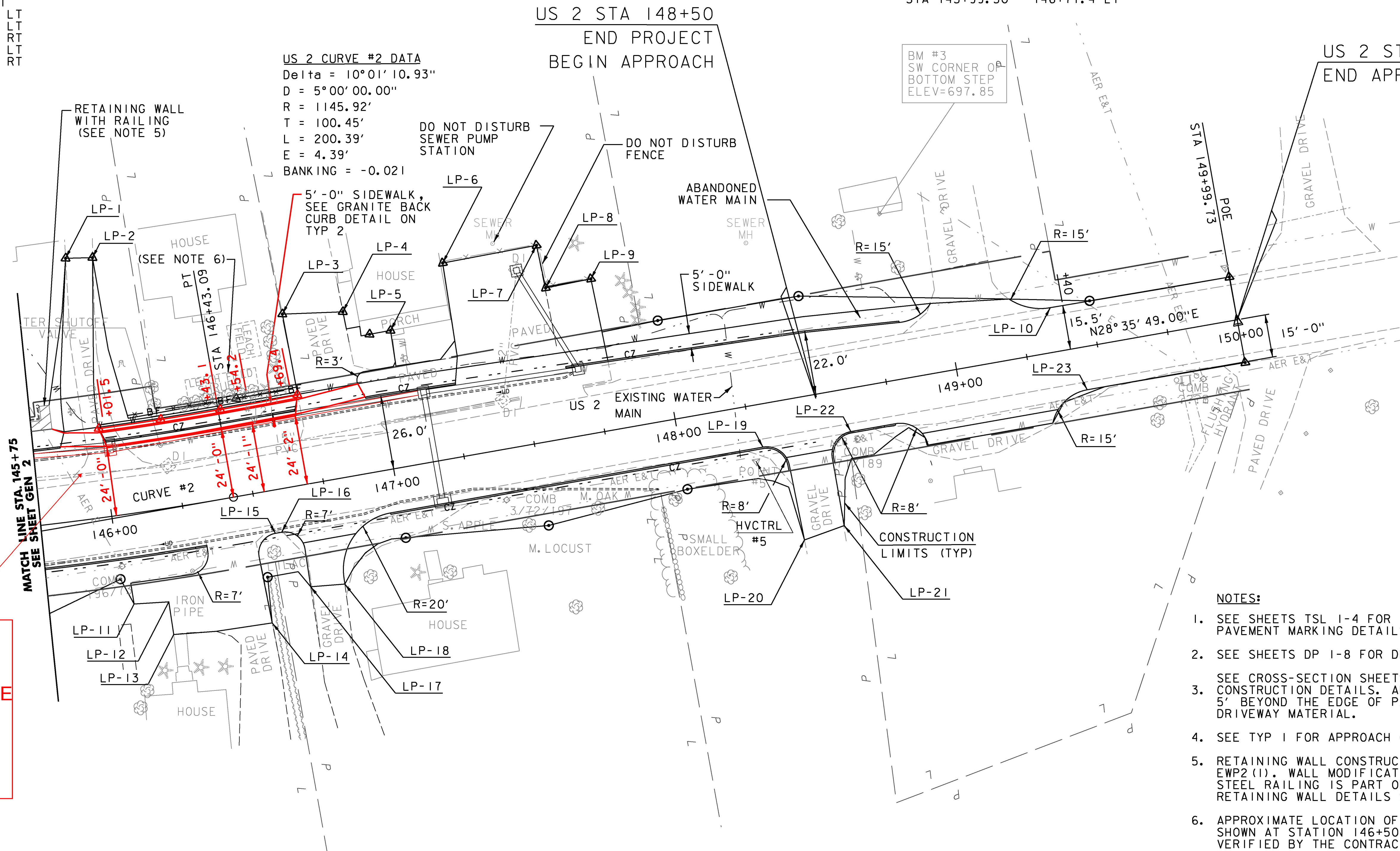


616.28 - CAST-IN-PLACE  
CONCRETE CURB, TYPE B  
STA 145+75 - 145+85.1 LT  
STA 145+75 - 146+31.1 RT  
STA 146+01.6 - 146+69.4 LT  
STA 146+94.7 - 147+26.5 LT  
STA 146+96.3 - 148+36.7 RT  
STA 147+65.5 - 148+83.1 LT  
STA 148+51.8 - 148+75.6 RT

US 2 CURVE #2 DATA  
Delta = 10°01'10.93"  
D = 5°00'00.00"  
R = 1145.92'  
T = 100.45'  
L = 200.39'  
E = 4.39'  
BANKING = -0.021

US 2 STA 148+50  
END PROJECT  
BEGIN APPROACH

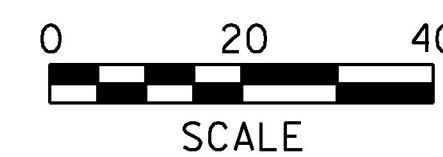
US 2 STA 150+00  
END APPROACH



CHANGES IN RED ARE CHANGES MADE TO ORIGINAL DESIGN, MADE BY DESIGNERS

NOTES:

1. SEE SHEETS TSL 1-4 FOR TRAFFIC SIGNS, AND PAVEMENT MARKING DETAILS.
2. SEE SHEETS DP 1-8 FOR DRAINAGE PLANS AND DETAILS.
3. SEE CROSS-SECTION SHEETS FOR DRIVEWAY CONSTRUCTION DETAILS. ALL DRIVES SHALL BE PAVED 5' BEYOND THE EDGE OF PAVEMENT REGARDLESS OF DRIVEWAY MATERIAL.
4. SEE TYP 1 FOR APPROACH CONSTRUCTION DETAILS.
5. RETAINING WALL CONSTRUCTED PER CONTRACT BF EWP2 (1). WALL MODIFICATIONS AND THE ADDITION OF A STEEL RAILING IS PART OF THIS CONTRACT. SEE RETAINING WALL DETAILS SHEET FOR MORE INFORMATION.
6. APPROXIMATE LOCATION OF EXISTING LEACH FIELD SHOWN AT STATION 146+50 LT SHALL BE FIELD VERIFIED BY THE CONTRACTOR. CONTRACTOR TO PROVIDE SURVEYED INFORMATION TO THE ENGINEER FOR FURTHER CONSIDERATION.



PROJECT NAME: EAST MONTPELIER  
PROJECT NUMBER: BRF 037-(17)

FILE NAME: ...\\16\_GeneralPlans.dgn  
PROJECT LEADER: T. KNIGHT  
DESIGNED BY: K. RICHARDSON  
GENERAL PLAN SHEET GEN 4

PLOT DATE: 7/28/2017  
DRAWN BY: E. ALLING  
CHECKED BY: G. GOYETTE  
SHEET 1 OF 6