

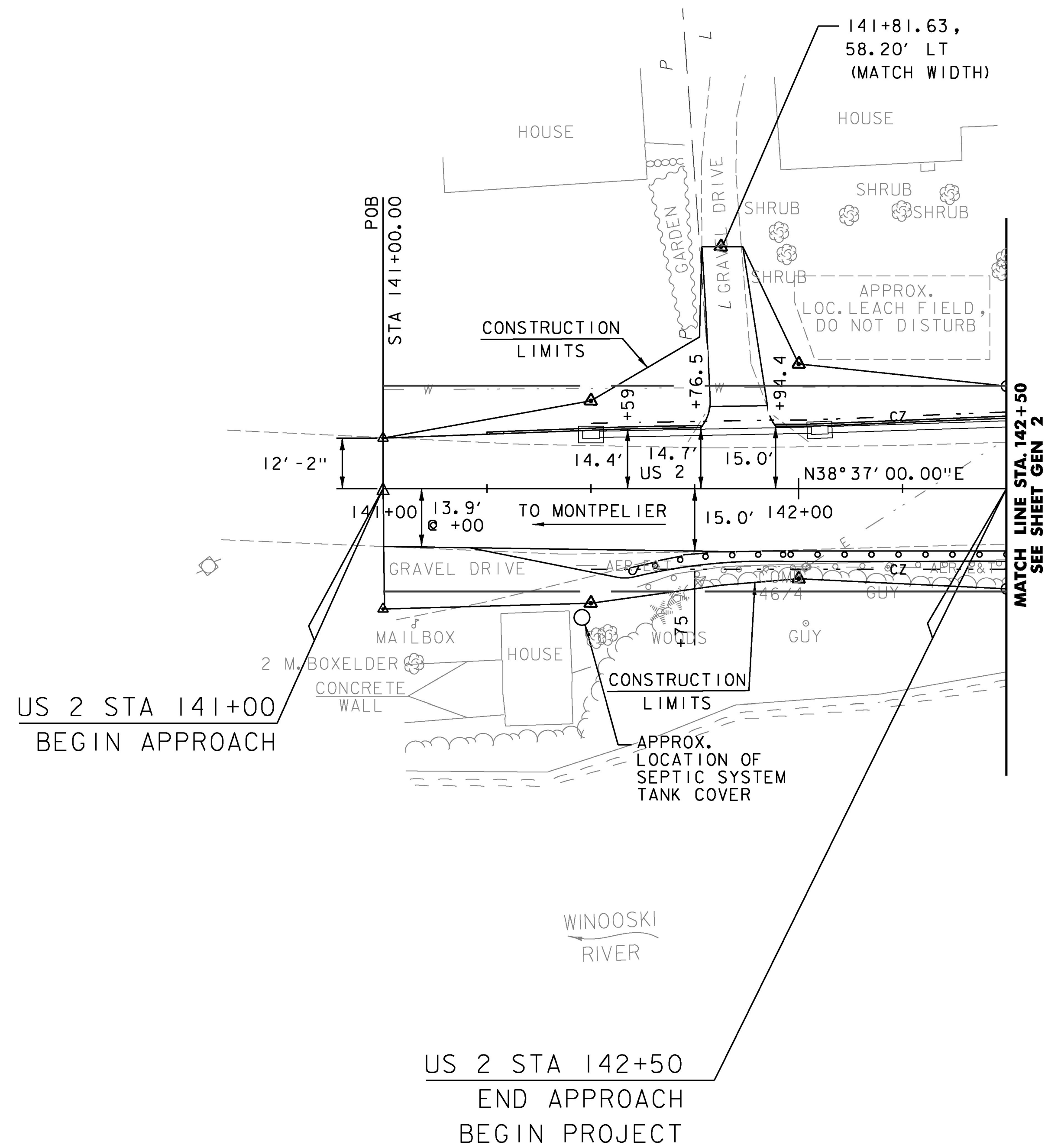
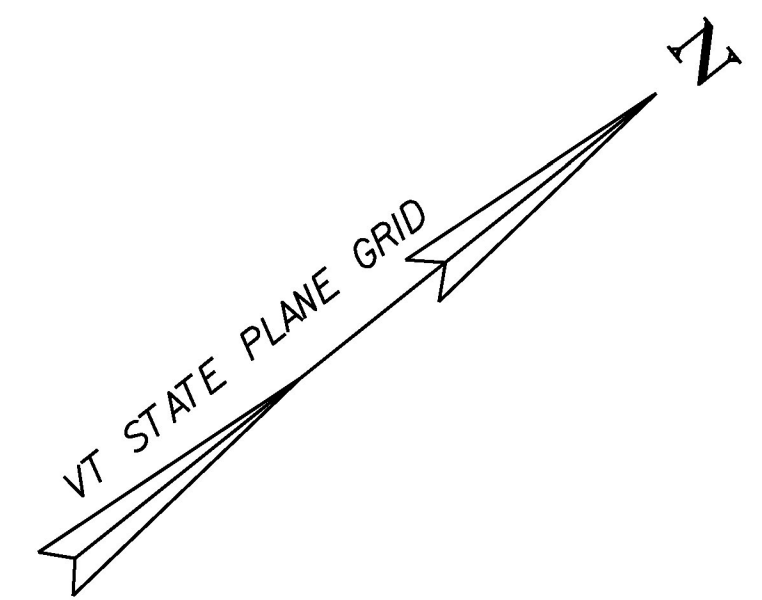
CONSTRUCT DRIVE
 STATION TYPE WIDTH @ ROW
 141+83 LT GRAV. W/ 5' PAVED APRON 12'

621.80 - REMOVAL AND DISPOSAL OF GUARDRAIL
 STA 141+61 - 142+50 RT

616.28 - CAST-IN-PLACE CONCRETE CURB, TYPE B
 STA 141+25.0 - 141+76.5 LT
 STA 141+94.4 - 142+50.0 LT

621.215 - HD STEEL BEAM GUARDRAIL, GALVANIZED W/ 8 FEET POSTS
 STA 141+97 - 142+50 RT

621.50 - MANUFACTURED TERMINAL END SECTION, FLARED
 STA 141+59 - 141+97 RT



- NOTES:**
1. SEE SHEETS TSL 1-4 FOR TRAFFIC SIGNS, AND PAVEMENT MARKING DETAILS.
 2. SEE SHEETS DP 1-8 FOR DRAINAGE PLANS AND DETAILS.
 3. SEE CROSS-SECTION SHEETS FOR DRIVEWAY CONSTRUCTION DETAILS. ALL DRIVES SHALL BE PAVED 5' BEYOND THE EDGE OF PAVEMENT REGARDLESS OF DRIVEWAY MATERIAL.
 4. SEE TYP 1 FOR APPROACH CONSTRUCTION DETAILS.

PROJECT NAME: EAST MONTPELIER	PLOT DATE: 2/17/2017
PROJECT NUMBER: BRF 037-(17)	DRAWN BY: E. ALLING
FILE NAME: ...\\16_General Plans.dgn	CHECKED BY: G. GOYETTE
DESIGNED BY: K. RICHARDSON	SHEET 19 OF 158
GENERAL PLAN SHEET GEN 3	

