

| CONSTRUCT DRIVE | STATION | TYPE | WIDTH @ ROW |
|-----------------|---------|------|-----------------------------|
| | 126+87 | LT | GRAV. W/ 5' PAVED APRON 12' |
| | 143+33 | LT | GRAV. W/ 5' PAVED APRON 12' |

| DRIVEWAY LAYOUT TABLE | |
|-----------------------|------------------------------------|
| POINT | STATION/OFFSET |
| LP-1 | 126+87.76, 50.00' LT (MATCH WIDTH) |

| 900.640 - SPECIAL PROVISION (GUARDRAIL APPROACH SECTION TO CONCRETE BRIDGE RAILING) (TL-2) | |
|--|-------------|
| STA 127+33 | - 127+71 RT |
| STA 127+54 | - 127+71 LT |
| STA 129+55 | - 129+65 LT |
| STA 129+55 | - 129+85 RT |

616.28 - CAST-IN-PLACE CONCRETE CURB, TYPE B

| | |
|--------------|---------------|
| STA 126+75.0 | - 126+79.3 LT |
| STA 126+95.2 | - 127+69.0 LT |
| STA 127+00.0 | - 127+69.0 RT |
| STA 129+57.3 | - 145+75.0 RT |
| STA 129+57.3 | - 129+59.3 LT |
| STA 142+50.0 | - 143+23.9 LT |
| STA 143+41.6 | - 145+75.0 LT |

618.30 - DETECTABLE WARNING SURFACE

| | |
|------------|----|
| STA 144+84 | LT |
| STA 144+84 | RT |

621.80 - REMOVAL AND DISPOSAL OF GUARDRAIL

| | |
|------------|-------------|
| STA 127+45 | - 127+84 RT |
| STA 127+49 | - 128+10 LT |
| STA 142+50 | - 143+86 RT |
| STA 144+10 | - 144+54 RT |

618.10 - PORTLAND CEMENT CONCRETE SIDEWALK, 5 INCH

| | |
|--------------|---------------|
| STA 127+00.0 | - 127+69.0 RT |
| STA 129+57.3 | - 144+88.1 RT |
| STA 144+80.0 | - 145+75.0 LT |

620.50 - REMOVING AND RESETTING FENCE

| | |
|------------|-------------|
| STA 126+75 | - 126+77 LT |
| STA 126+96 | - 127+06 LT |

621.215 - HD STEEL BEAM GUARDRAIL, GALVANIZED W/ 8 FEET POSTS

| | |
|------------|-------------|
| STA 127+07 | - 127+33 RT |
| STA 127+14 | - 127+54 LT |
| STA 142+50 | - 143+69 RT |
| STA 129+85 | - 130+08 RT |

621.60 ANCHOR FOR STEEL BEAM GUARDRAIL

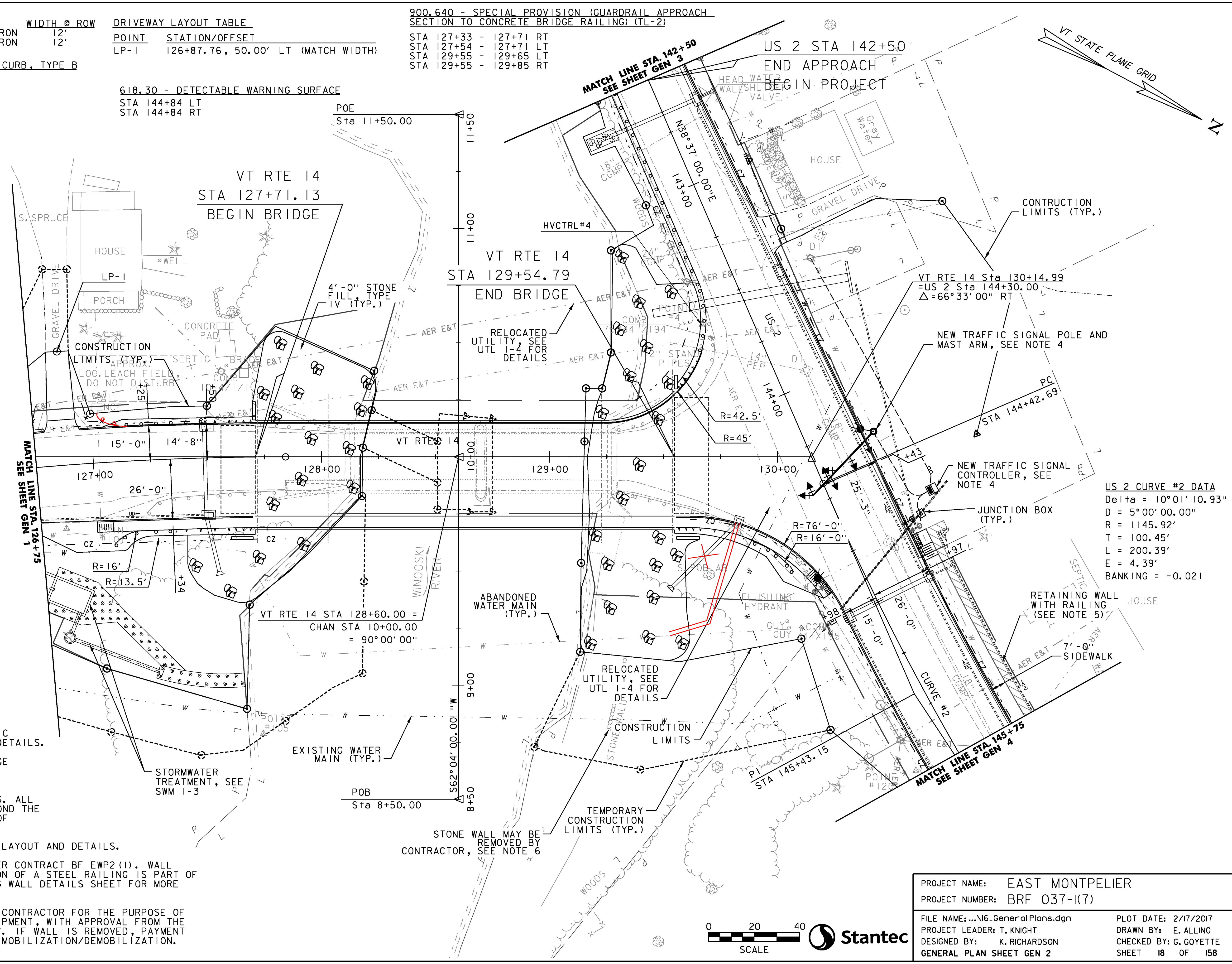
| | |
|------------|--------|
| STA 127+07 | RT |
| STA 127+14 | LT +02 |
| STA 130+08 | RT |

900.640 - SPECIAL PROVISION (BRIDGE RAILING, TEXAS)

| | |
|------------|-------------|
| STA 127+71 | - 129+55 LT |
| STA 127+71 | - 129+55 RT |

NOTES:

- SEE SHEETS TSL 1-4 FOR TRAFFIC SIGNS, AND PAVEMENT MARKING DETAILS.
- SEE SHEETS DP 1-8 FOR DRAINAGE PLANS AND DETAILS.
- SEE CROSS-SECTION SHEETS FOR DRIVEWAY CONSTRUCTION DETAILS. ALL DRIVES SHALL BE PAVED 5' BEYOND THE EDGE OF SHOULDER REGARDLESS OF DRIVEWAY MATERIAL.
- SEE TSP 1 FOR TRAFFIC SIGNAL LAYOUT AND DETAILS.
- RETAINING WALL CONSTRUCTED PER CONTRACT BF EWP2(I). WALL MODIFICATIONS AND THE ADDITION OF A STEEL RAILING IS PART OF THIS CONTRACT. SEE RETAINING WALL DETAILS SHEET FOR MORE INFORMATION.
- STONE WALL MAY BE REMOVED BY CONTRACTOR FOR THE PURPOSE OF POSITIONING CONSTRUCTION EQUIPMENT, WITH APPROVAL FROM THE ENGINEER, IF DEEMED NECESSARY. IF WALL IS REMOVED, PAYMENT WILL BE INCIDENTAL TO 635.11 MOBILIZATION/DEMobilIZATION.



US 2 CURVE #2 DATA

| | |
|---------|-----------------|
| Delta | = 10°01' 10.93" |
| D | = 5°00' 00.00" |
| R | = 1145.92' |
| T | = 100.45' |
| L | = 200.39' |
| E | = 4.39' |
| BANKING | = -0.021 |

0 20 40
SCALE

| | |
|--------------------------|-------------------------|
| PROJECT NAME: | EAST MONTPELIER |
| PROJECT NUMBER: | BRF 037-(17) |
| FILE NAME: | ...16_General Plans.dgn |
| PROJECT LEADER: | T. KNIGHT |
| DESIGNED BY: | K. RICHARDSON |
| GENERAL PLAN SHEET GEN 2 | |
| PLOT DATE: | 2/17/2017 |
| DRAWN BY: | E. ALLING |
| CHECKED BY: | G. GOYETTE |
| SHEET | 18 OF 158 |