

CONSTRUCT DRIVE			
STATION	TYPE	WIDTH @ ROW	
123+39 RT	GRAV. W/ 5' PAVED APRON	16'	
124+50 RT	GRAV. W/ 5' PAVED APRON	15'	
124+58 LT	GRAV. W/ 5' PAVED APRON	16'	
125+62 LT	GRAV. W/ 5' PAVED APRON	12'	
126+48 RT	PAVED	28'	

616.28 - CAST-IN-PLACE CONCRETE CURB, TYPE B
 STA 124+64.5 - 125+51.8 LT
 STA 125+69.6 - 126+75 LT

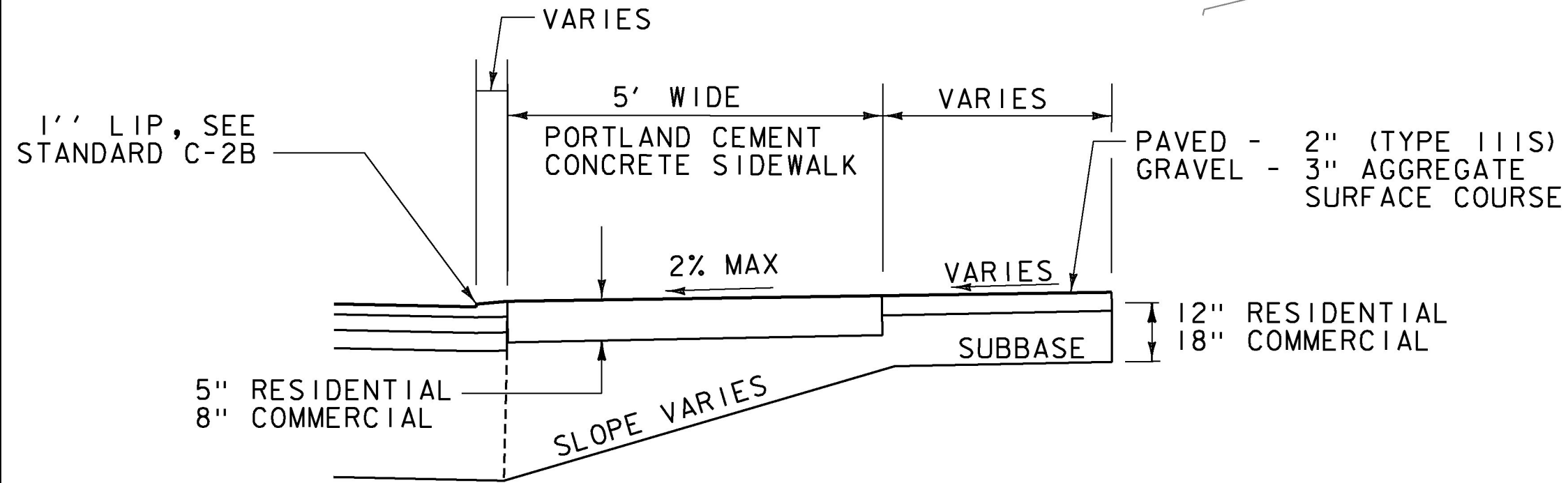
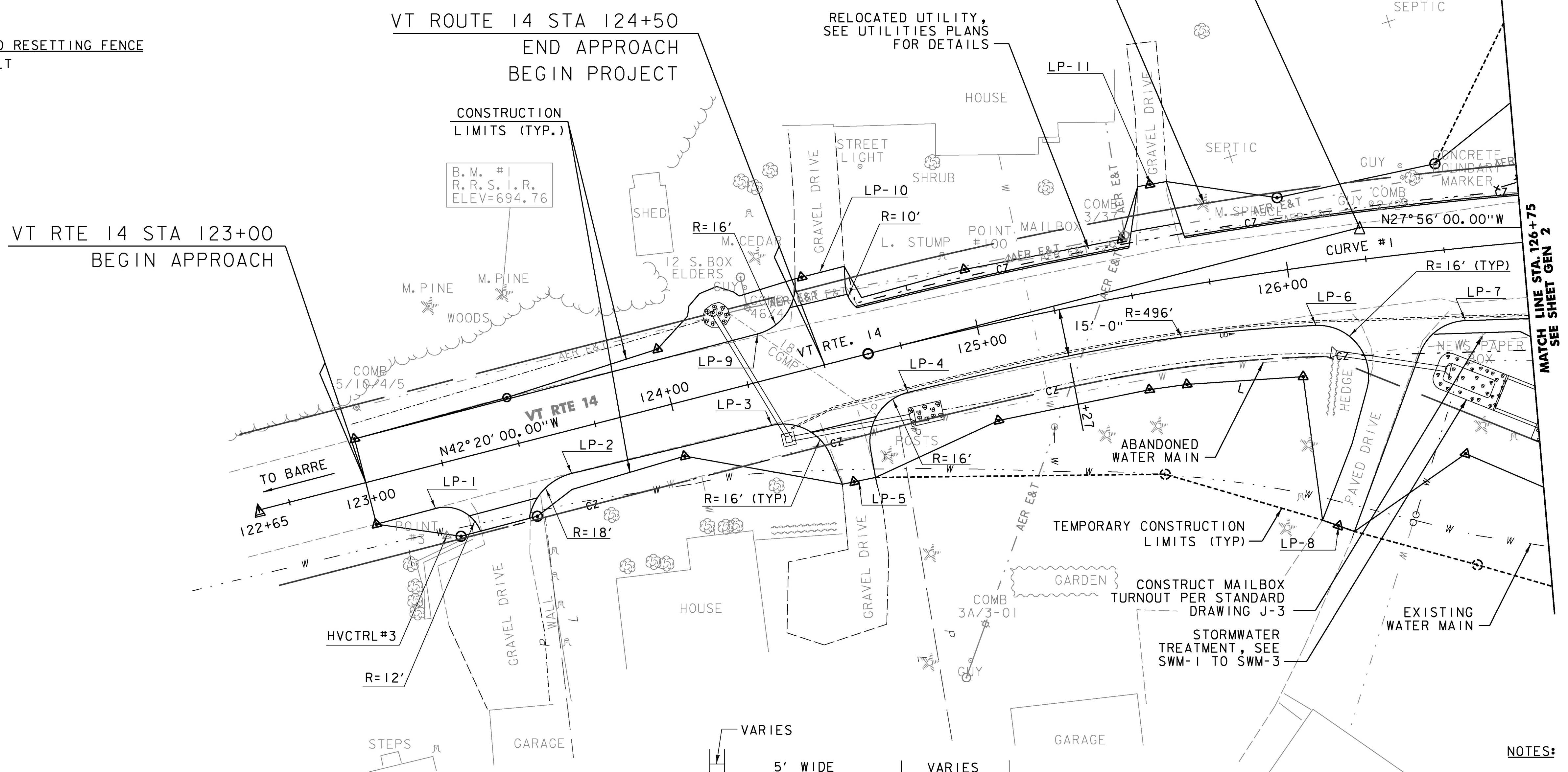
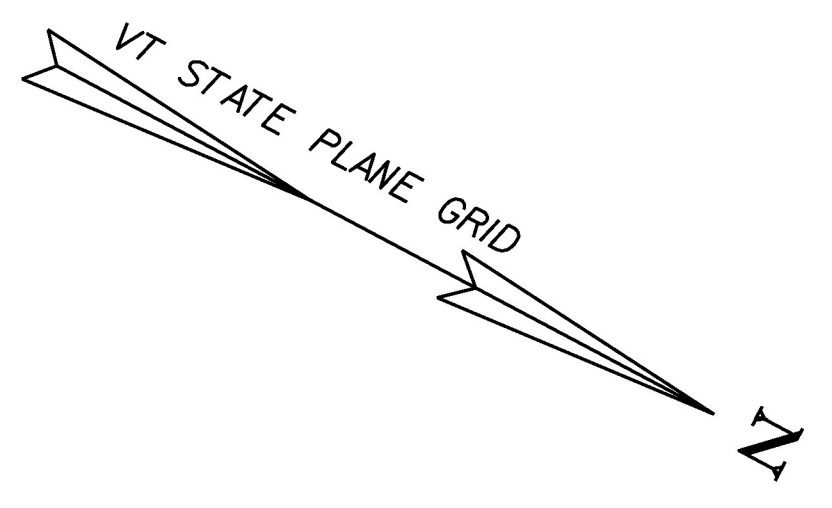
617.10 - RELOCATE MAILBOX, SINGLE SUPPORT
 STA 126+59 RT

620.50 - REMOVING AND RESETTING FENCE
 STA 126+67 - 126+75 LT

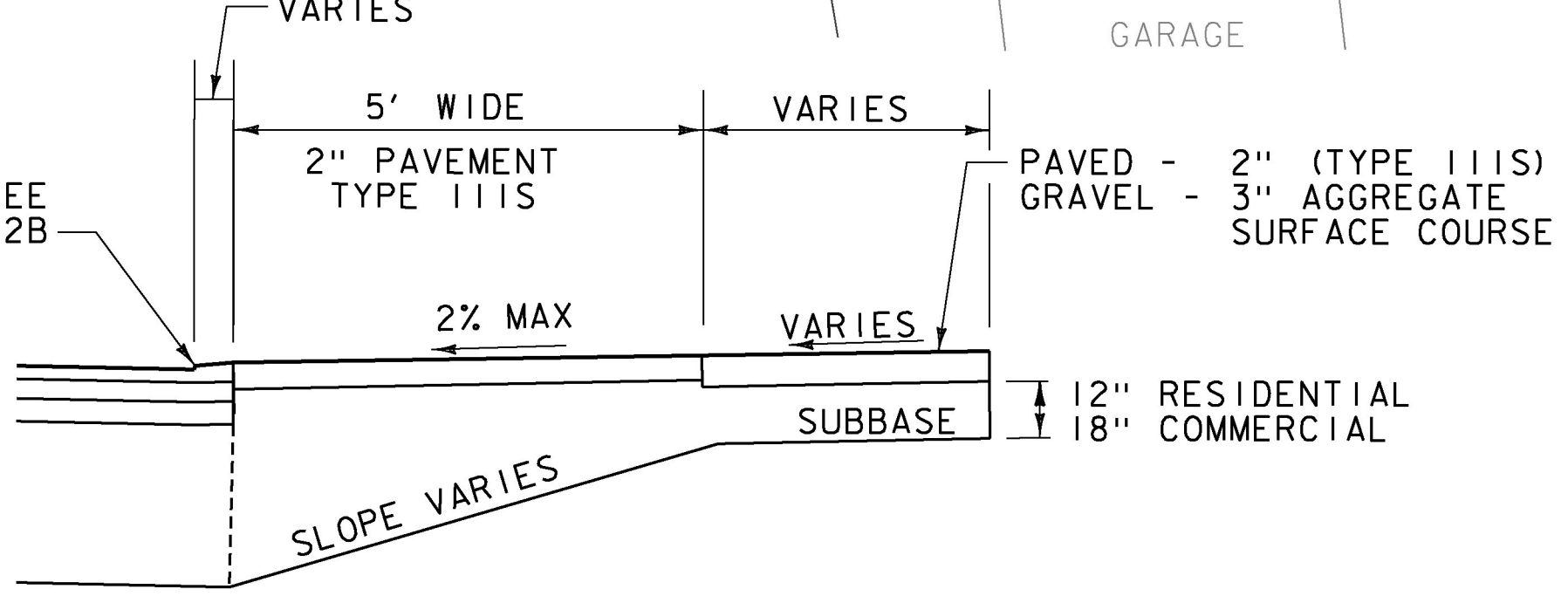
DRIVEWAY LAYOUT TABLE			
POINT	STATION/OFFSET		
LP-1	123+19.38, 13.45' RT		
LP-2	123+63.94, 13.45' RT		
LP-3	124+29.14, 14.43' RT		
LP-4	124+73.71, 15.00' RT		
LP-5	124+51.51, 38.30' RT	(MATCH WIDTH)	
LP-6	126+06.46, 18.81' RT		
LP-7	126+54.47, 23.01' RT		
LP-8	126+04.56, 82.72' RT	(MATCH WIDTH)	
LP-9	124+31.96, 14.80' LT		
LP-10	124+55.83, 28.75' LT	(MATCH WIDTH)	
LP-11	125+62.00, 33.60' LT	(MATCH WIDTH)	

VT 14 CURVE #1 DATA
 Delta = 14°24'00.00"
 D = 4°30'00.00"
 R = 1273.24'
 T = 160.85'
 L = 320.00'
 E = 10.12'
 BANKING = -0.021

VT RTE 14 PI
 STA 126+25.19 BK=
 STA 126+23.49 AHD

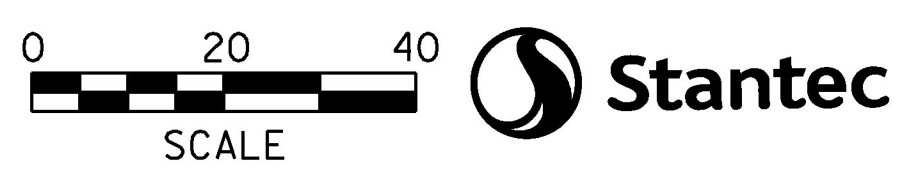


RESIDENTIAL /COMMERCIAL DRIVEWAY WITH SIDEWALK
 NOT TO SCALE
 NOTE: SEE CROSS SECTIONS FOR ADDITIONAL INFORMATION



RESIDENTIAL /COMMERCIAL DRIVEWAY
 NOT TO SCALE
 NOTE: SEE CROSS SECTIONS FOR ADDITIONAL INFORMATION

- NOTES:**
- SEE SHEETS TSL-1 THROUGH TSL-4 FOR TRAFFIC SIGNS AND PAVEMENT MARKING LAYOUT.
 - SEE SHEETS DP-1 THROUGH DP-8 FOR DRAINAGE PLANS AND LAYOUT.
 - SEE CROSS-SECTION SHEETS FOR DRIVEWAY CONSTRUCTION DETAILS. ALL DRIVES SHALL BE PAVED 5' BEYOND THE EDGE OF SHOULDER REGARDLESS OF DRIVEWAY MATERIAL.
 - SEE SHEET TYP 2 FOR APPROACH CONSTRUCTION DETAILS.



PROJECT NAME:	EAST MONTPELIER	FILE NAME:	...\\16_General Plans.dgn	PLOT DATE:	2/17/2017
PROJECT NUMBER:	BRF 037-(17)	PROJECT LEADER:	T. KNIGHT	DRAWN BY:	E. ALLING
		DESIGNED BY:	K. RICHARDSON	CHECKED BY:	G. GOYETTE
		GENERAL PLAN SHEET GEN 1		SHEET	17 OF 158