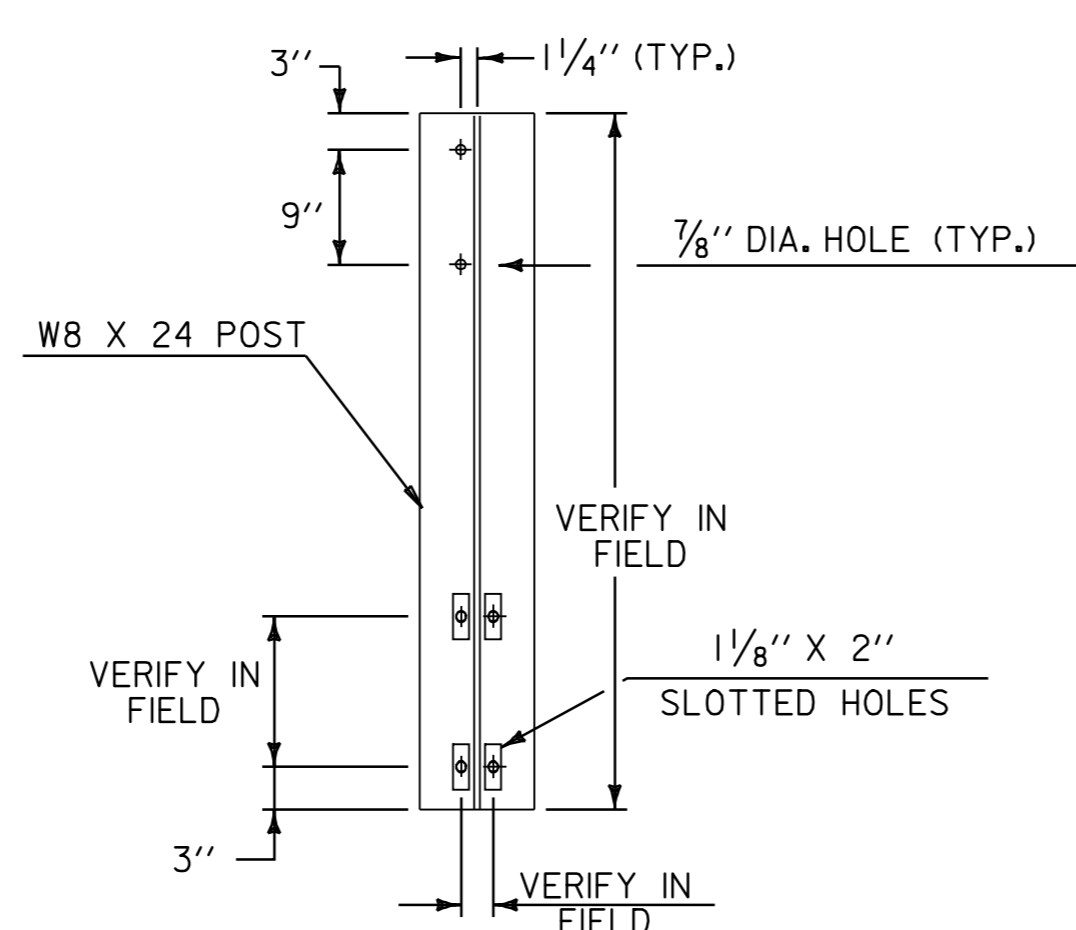
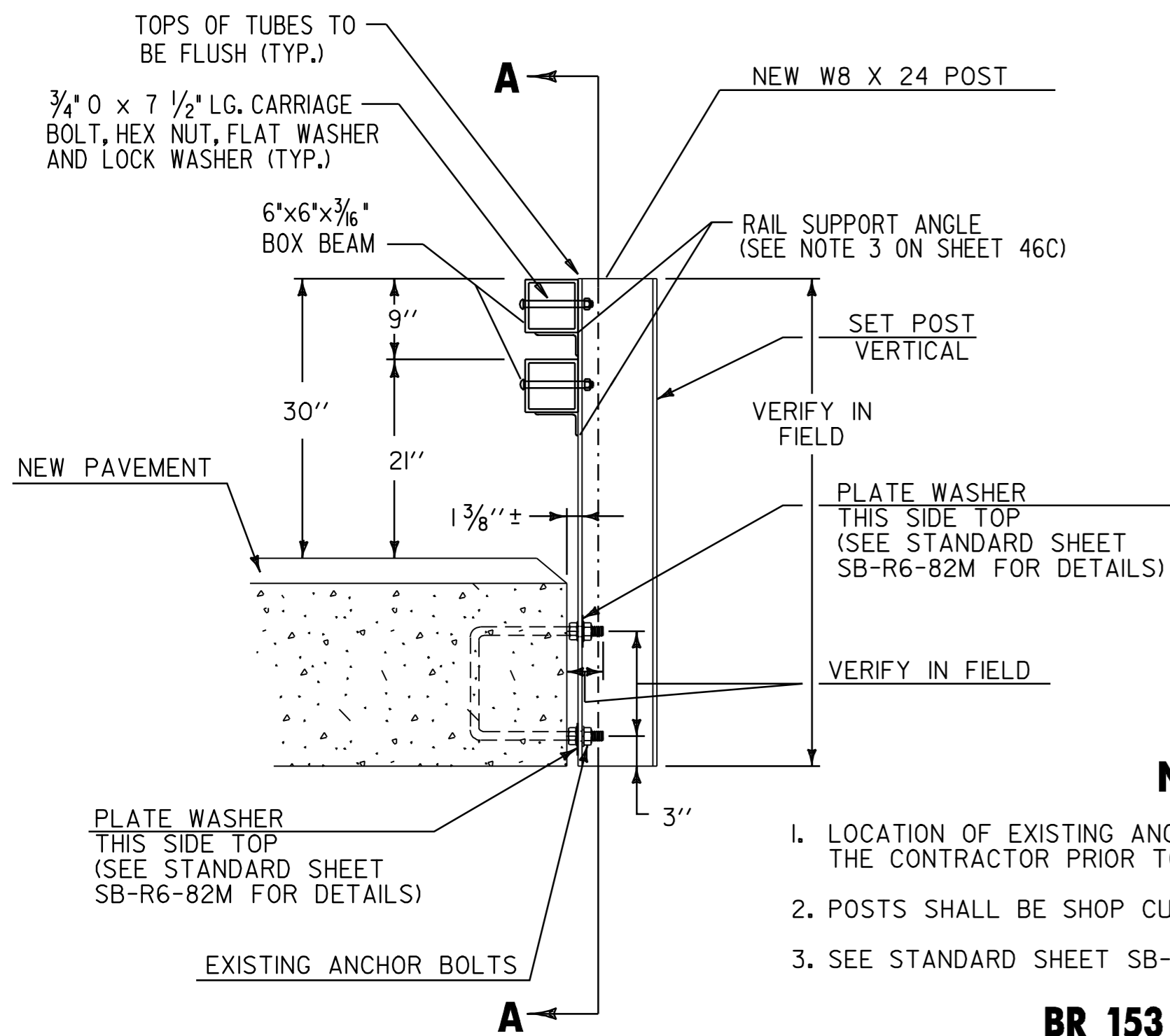


BR 153 GRANVILLE MM 2.738 = STA. 4+406.384

NOT TO SCALE



NOTES

1. LOCATION OF EXISTING ANCHOR BOLTS TO BE VERIFIED IN THE FIELD BY THE CONTRACTOR PRIOR TO ORDERING BRIDGE POSTS.
2. POSTS SHALL BE SHOP CUT AND DRILLED PRIOR TO GALVANIZING.
3. SEE STANDARD SHEET SB-R6-82M FOR ADDITIONAL POST DETAILS.

BR 153 BRIDGE POST DETAIL

NOT TO SCALE

NOTES

ALL BOX BEAM DETAIL DIMENSIONS ARE IN ENGLISH UNITS. THE FINAL QUANTITIES HAVE BEEN CONVERTED TO METRIC FOR PAYMENT.

BOX BEAM DETAILS FOR BRIDGE 153 APPEAR ON SHEET 46C.

THE BOX BEAM RAIL AND LOWER RUB RAIL SHALL BE SHOP BENT TO THE INDICATED RADIUS AT THE NECESSARY LOCATIONS SHOWN ABOVE. THIS RADIUS SHALL BE CONFIRMED BY THE CONTRACTOR PRIOR TO FABRICATION.

THE COST OF PROVIDING AND INSTALLING NEW BRIDGE POSTS ON BRIDGE 153 SHALL BE INCLUDED IN THE UNIT PRICE FOR ITEM 621.30, BOX BEAM GUARD RAIL (MOD. 3).

BRIDGE DETAIL SHEET 9	SURVEYED BY	N/A	DATE	N/A
	DRAWN BY	C.A.K.	DATE	11/00
	SQUAD LEADER	T.P.K.		
	DESIGN FILE NO.	/pave/98b180/pbl80.dgn		
	IPARM FILE	pbl80b09.i	DATE PLOTTED	21-DEC-2006 15
PROJ. NAME	ROCHESTER-GRANVILLE			
PROJ. NO.	AC_STP_2124(1)S			
SHEET	44	OF	49	SHEETS