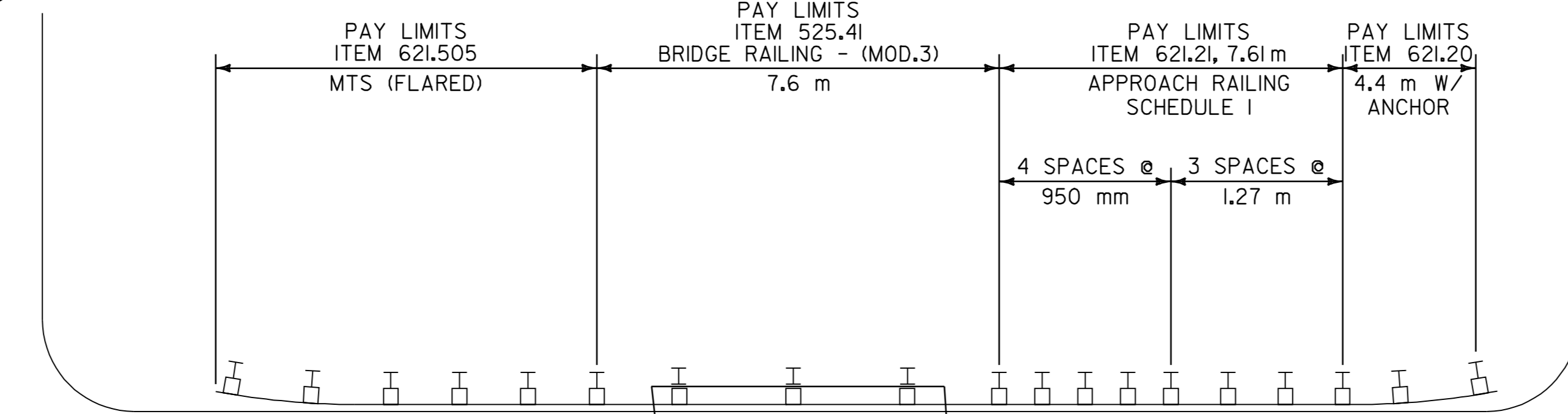


FIELD ACCESS

GRAVEL DRIVE

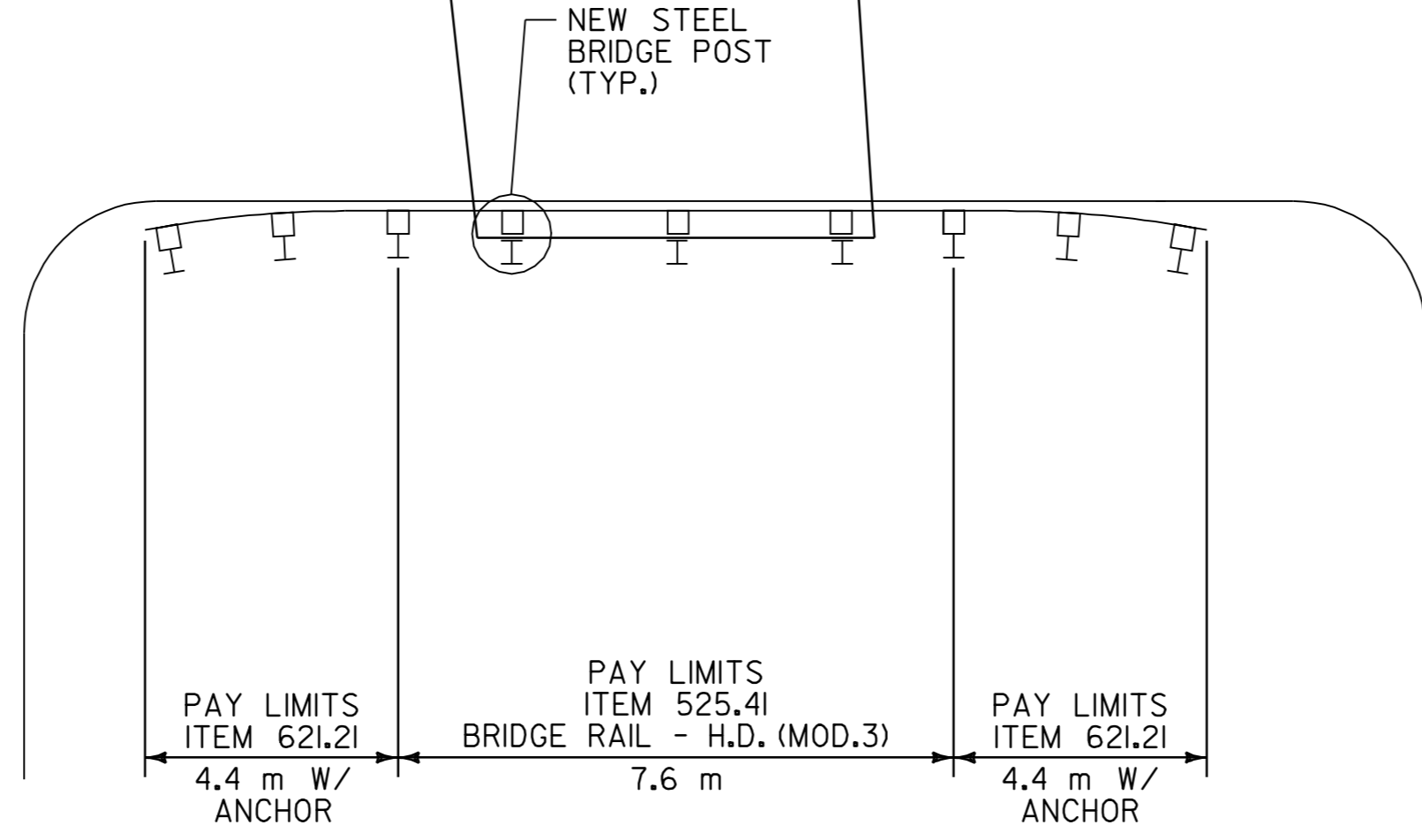


SOUTHBOUND

VT. ROUTE 100

NORTHBOUND

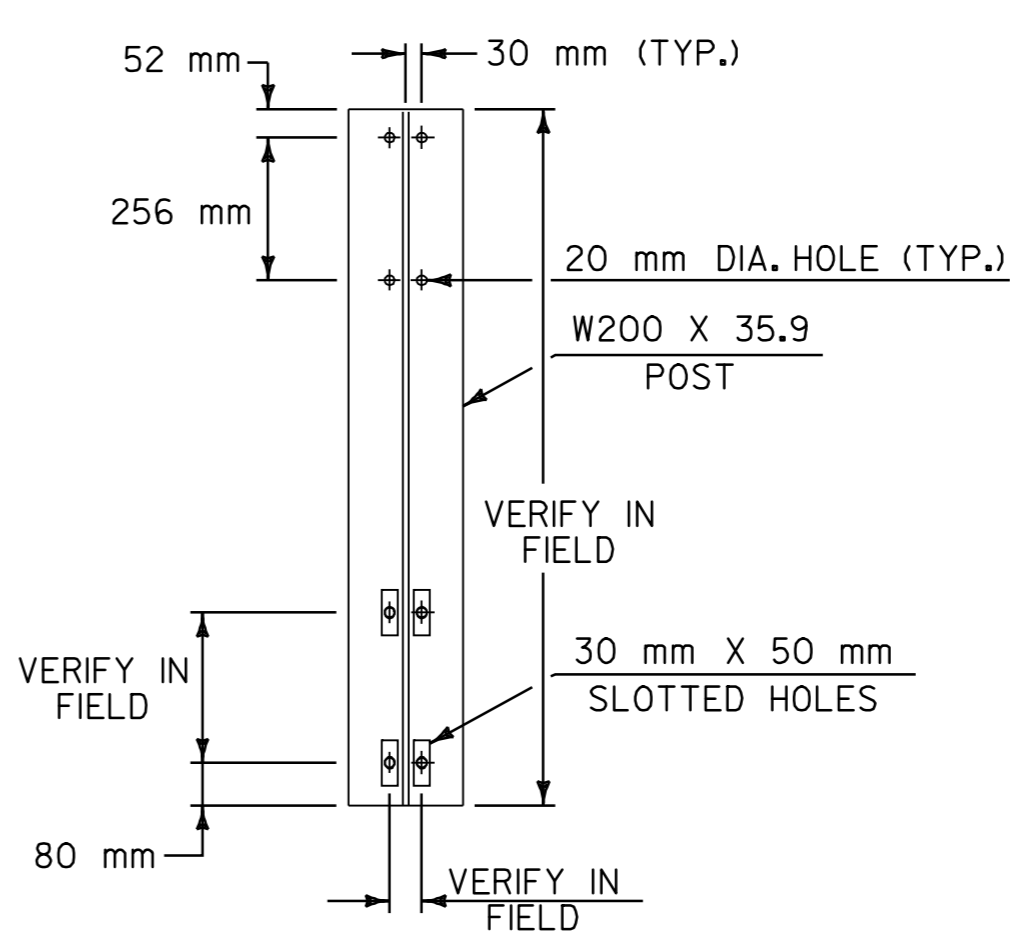
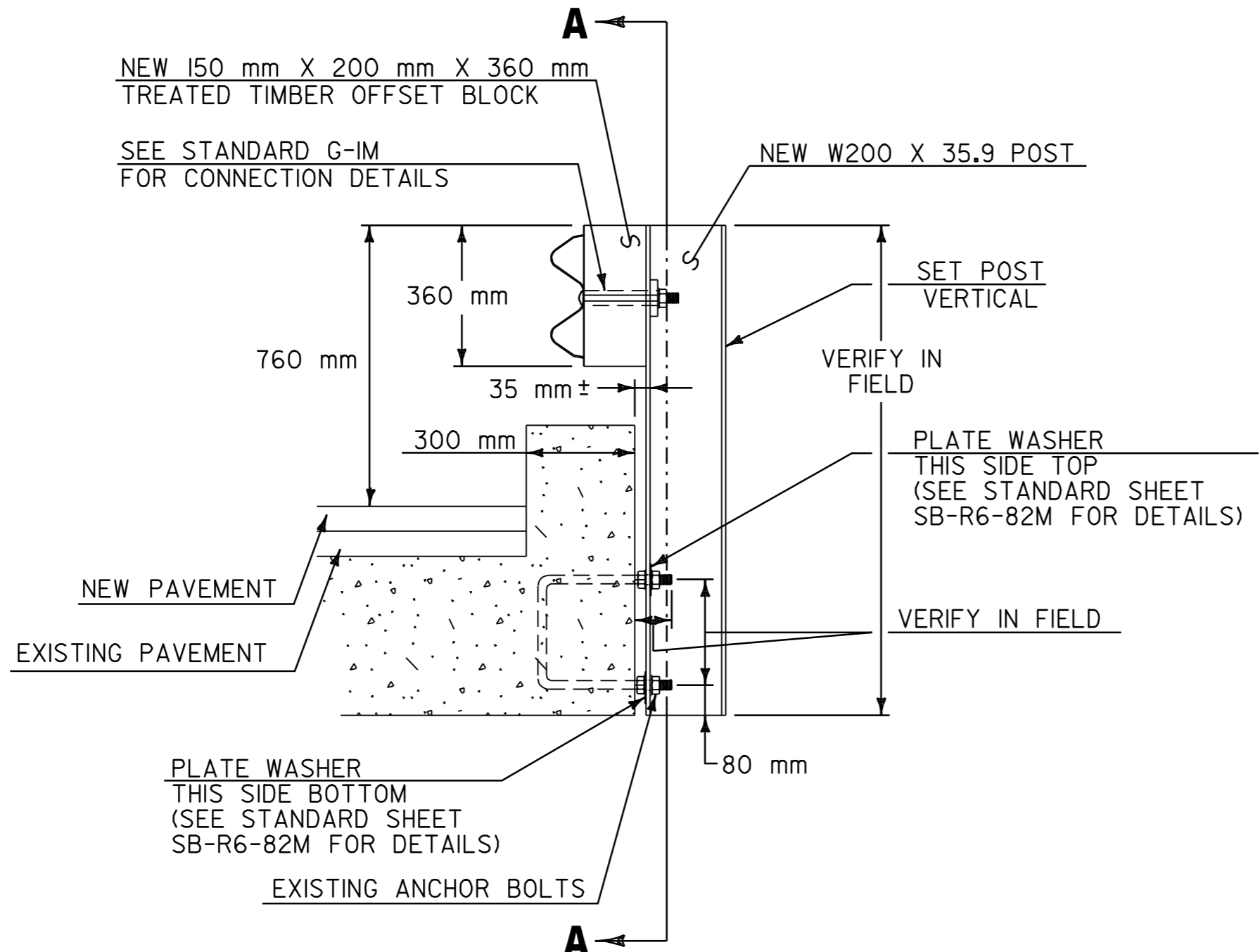
ASPHALT DRIVE



GRAVEL DRIVE

BR 150 GRANVILLE MM 1.958 = STA. 3+151.096

NOT TO SCALE



SECTION A-A

NOTES

1. LOCATION OF EXISTING ANCHOR BOLTS TO BE VERIFIED IN THE FIELD BY THE CONTRACTOR PRIOR TO ORDERING BRIDGE POSTS.
2. POSTS SHALL BE SHOP CUT AND DRILLED PRIOR TO GALVANIZING.
3. SEE STANDARD SHEET SB-R6-82M FOR ADDITIONAL DETAILS.

BR 150 BRIDGE POST DETAIL

NOT TO SCALE

DATUM	
VERTICAL	N/A
HORIZONTAL	N/A

**BRIDGE
DETAIL
SHEET 7**

SURVEYED BY	N/A	DATE	N/A
DRAWN BY	C.A.K.	DATE	11/00
SQUAD LEADER	T.P.K.		
DESIGN FILE NO.	/pave/98b180/pbl80.dgn		
IPARM FILE	pbl80b07.i	DATE PLOTTED	21-DEC-2006 15:5
PROJ. NAME	ROCHESTER-GRANVILLE		
PROJ. NO.	AC_SIP_212411S		
SHEET	42	OF	49
SHEETS			