

646.40 DURABLE 100 mm WHITE LINE
(ALL LINES WILL INCLUDE EDGE LINE BREAKS AND RADIUS FOR TOWN HIGHWAYS)

HANCOCK:
STA. I+720.0 - STA. 2+260.0 LT & RT

646.60 TEMPORARY 100 mm WHITE LINE
(ALL LINES WILL INCLUDE EDGE LINE BREAKS AND RADIUS FOR TOWN HIGHWAYS)

HANCOCK:
STA. I+720.0 - STA. 2+260.0 LT & RT

646.41 DURABLE 100 mm YELLOW LINE
(ALL LINES WILL INCLUDE C/L BREAKS FOR TOWN HIGHWAYS) S=SOLID, D=DASHED

HANCOCK:
STA. I+720.0 - STA. 2+260.0 LT S C RT
STA. I+953.744 DOUBLE SOLID LT, VT. ROUTE 125 S S

646.61 TEMPORARY 100 mm YELLOW LINE
(ALL LINES WILL INCLUDE C/L BREAKS FOR TOWN HIGHWAYS) S=SOLID, D=DASHED

HANCOCK:
STA. I+720.0 - STA. 2+260.0 LT S C RT
STA. I+953.744 DOUBLE SOLID LT, VT. ROUTE 125 S S

646.42 DURABLE 200 mm WHITE LINES

HANCOCK:
STA. I+957.344 - STA. I+980.0 LT, SHOULDER HATCHING (40 m)

646.46 DURABLE 600 mm STOP BAR

HANCOCK:
STA. I+953.744 LT, VT. ROUTE 125

646.66 TEMPORARY 600 mm STOP BAR

HANCOCK:
STA. I+953.744 LT, VT. ROUTE 125

646.50 DURABLE LETTER OR SYMBOL

HANCOCK:
STA. I+866.0 LT, "S,C,H,O,O,L" (6 EA)
STA. I+953.744 LT, VT. ROUTE 125, "S,T,O,P" (4 EA)

646.70 TEMPORARY LETTER OR SYMBOL

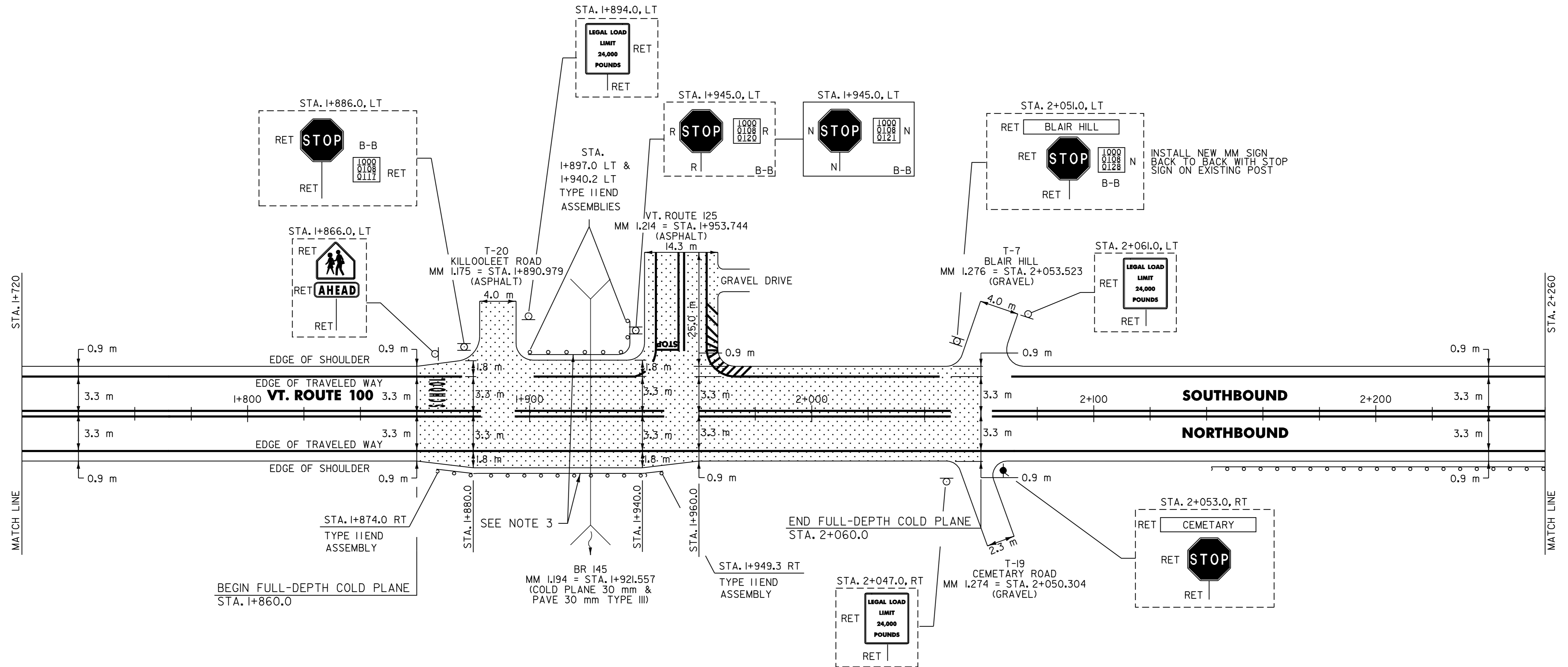
HANCOCK:
STA. I+866.0 LT, "S,C,H,O,O,L" (6 EA)
STA. I+953.744 LT, VT. ROUTE 125, "S,T,O,P" (4 EA)

675.50 REMOVING SIGNS

AS SHOWN - 2

DITCHING LOCATIONS

HANCOCK:
STA. 2+021 - STA. 2+260 LT
(SEE SHEET 8 FOR DETAILS)



525.10 REMOVAL OF EXISTING RAILING

HANCOCK:
STA. I+912.5 - STA. I+929.6 LT (17.1 m)
STA. I+912.5 - STA. I+929.6 RT (17.1 m)

621.30 BOX BEAM GUARD RAIL (MOD.)

HANCOCK:
STA. I+903.3 - STA. I+940.2 LT (36.86 m)
STA. I+903.3 - STA. I+940.2 RT (36.86 m)

621.30 BOX BEAM GUARD RAIL

HANCOCK:
STA. I+874.0 - STA. I+903.3 RT (29.3 m)
STA. I+897.0 - STA. I+903.3 LT (5.5 m)
STA. I+940.2 - STA. I+949.3 RT (9.1 m)
STA. I+940.2 LT (ALONG EDGE OF VT ROUTE 125) (4.6 m)

621.505 MANUFACTURED TERMINAL SECTION (FLARED)

HANCOCK:
STA. 2+154.2 RT

621.20 STEEL BEAM GUARDRAIL W/2.4 m POSTS (MOD.)

HANCOCK:
~~STA. 2+154.2 - STA. 2+260.0 RT (105.8 m)~~
STA. 2+154.2 - STA. 2+260.0 RT (105.8 m)

621.80 REMOVAL AND DISPOSAL OF GUARDRAIL

HANCOCK:
STA. I+866.0 - STA. I+912.5 RT (46.5 m)
STA. I+898.0 - STA. I+912.5 LT (14.5 m)
STA. I+929.6 - STA. I+935.5 LT (13.9 m)
STA. I+929.6 - STA. I+948.0 RT (18.4 m)
STA. 2+155.0 - STA. 2+260.0 RT (105.0 m)

NOTES:

- PAVING LIMIT ON ALL TOWN HIGHWAYS SHALL BE MEASURED 8 m BACK FROM VT. ROUTE 100 EDGE OF SHOULDER UNLESS DENOTED OTHERWISE ON THE PLANS OR AS DIRECTED BY THE RESIDENT ENGINEER.
- NO OPENING IN THE CENTERLINE OR EDGELINE MARKINGS WILL BE PROVIDED FOR T-19 AS SHOWN ON THE AGENCY'S TOWN HIGHWAY INVENTORY FORM.
- SEE SHEETS 36, 38 & 46A OF 49 FOR BR 145 DETAILS.

DATUM	
VERTICAL	N/A
HORIZONTAL	N/A

SIGN LEGEND
R= REMOVE
S= SALVAGE
N= NEW
RET= RETAIN
B-B= BACK TO BACK
EXISTING= _____
NEW= _____

PAVING PROJECT LAYOUT	SURVEYED BY	N/A	DATE	N/A
	DRAWN BY	C.A.K.	DATE	11/00
	SQUAD LEADER	T.P.K.		
	DESIGN FILE NO.	/pave/98bl80/pbl80.dgn		
	IPARM FILE	pbl80p1.i	DATE PLOTTED	21-DEC-2006
PROJ. NAME	ROCHESTER-GRANVILLE			
PROJ. NO.	AC_STP_2124(1)S			
SHEET	19	OF	49	SHEETS