

646.40 DURABLE 100 mm WHITE LINE
(ALL LINES WILL INCLUDE EDGE LINE BREAKS AND RADIUS FOR TOWN HIGHWAYS)

ROCHESTER:
STA. II+420.0 - STA. II+940.0 LT & RT

646.60 TEMPORARY 100 mm WHITE LINE
(ALL LINES WILL INCLUDE EDGE LINE BREAKS AND RADIUS FOR TOWN HIGHWAYS)

ROCHESTER:
STA. II+420.0 - STA. II+940.0 LT & RT

646.41 DURABLE 100 mm YELLOW LINE
(ALL LINES WILL INCLUDE C/L BREAKS FOR TOWN HIGHWAYS) S=SOLID, D=DASHED

ROCHESTER:
STA. II+420.0 - STA. II+635.6 LT S RT
STA. II+635.6 - STA. II+844.8 S S
STA. II+844.8 - STA. II+940.0 S S
STA. II+490.716 DOUBLE SOLID RT, T-6I

646.61 TEMPORARY 100 mm YELLOW LINE
(ALL LINES WILL INCLUDE C/L BREAKS FOR TOWN HIGHWAYS) S=SOLID, D=DASHED

ROCHESTER:
STA. II+420.0 - STA. II+635.6 LT S RT
STA. II+635.6 - STA. II+844.8 S S
STA. II+844.8 - STA. II+940.0 S S
STA. II+490.716 DOUBLE SOLID RT, T-6I

646.46 DURABLE 600 mm STOP BAR

ROCHESTER:
STA. II+490.716 RT, T-6I

646.66 TEMPORARY 600 mm STOP BAR

ROCHESTER:
STA. II+490.716 RT, T-6I

646.50 DURABLE LETTER OR SYMBOL

ROCHESTER:
STA. II+490.716 RT, T-6I, "S,T,O,P" (4 EA)

646.70 TEMPORARY LETTER OR SYMBOL

ROCHESTER:
STA. II+490.716 RT, T-6I, "S,T,O,P" (4 EA)

675.50 REMOVING SIGNS

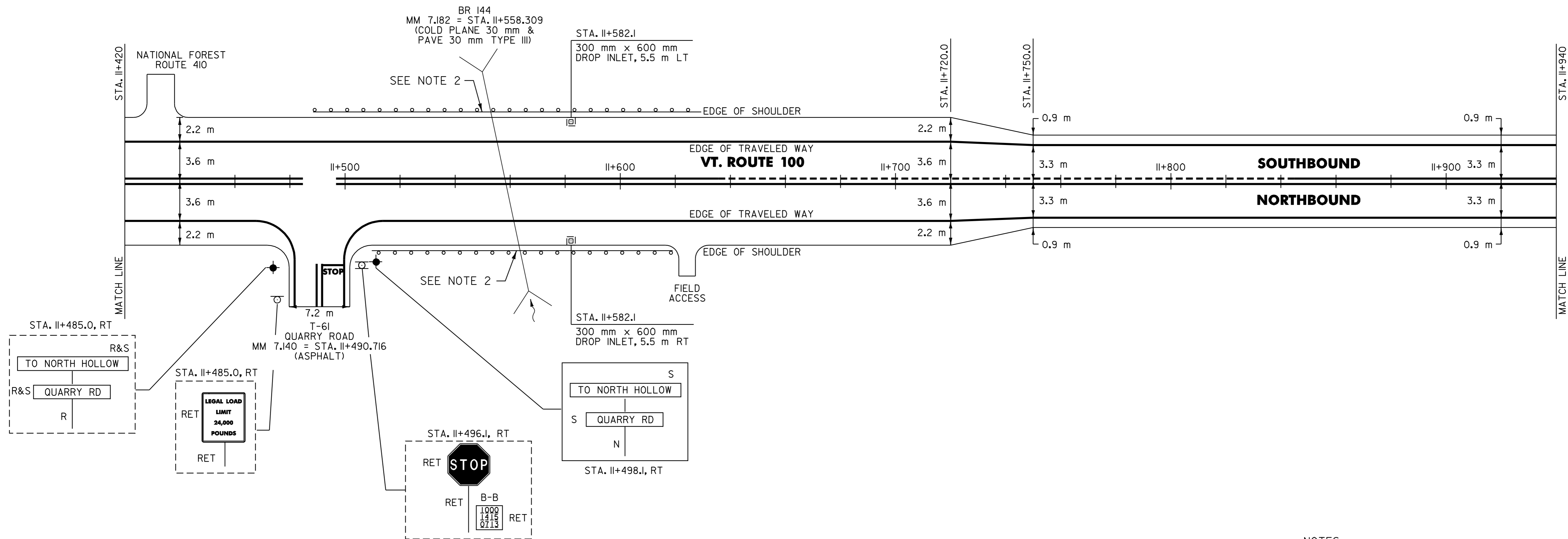
AS SHOWN - 2

675.60 ERECTING SALVAGED SIGNS

AS SHOWN - 2

DITCHING LOCATIONS

ROCHESTER:
STA. II+756 - STA. II+940 LT
(SEE SHEET 8 FOR DETAILS)



604.412 REHABING DI, CB OR MH, CLASS I

ROCHESTER:
STA. II+582.1 LT
STA. II+582.1 RT

616.35 TREATED TIMBER CURB

ROCHESTER:
STA. II+576.0 - STA. II+581.0 LT (5.0 m)
STA. II+577.0 - STA. II+582.0 RT (5.0 m)

621.20 STEEL BEAM GUARDRAIL

ROCHESTER:
STA. II+499.8 - STA. II+534.0 LT (34.2 m)
STA. II+508.4 - STA. II+523.6 RT (15.2 m)
STA. II+581.0 - STA. II+607.6 RT (26.6 m)
STA. II+591.4 - STA. II+618.0 LT (26.6 m)

621.505 MANUFACTURED TERMINAL SECTION (FLARED)

ROCHESTER:
STA. II+499.8 LT
STA. II+508.4 RT
STA. II+607.6 RT
STA. II+618.0 LT

621.70 GUARDRAIL APPROACH SECTION, TYPE I

ROCHESTER:
STA. II+523.6 - STA. II+538.8 RT (1EA)
STA. II+576.2 - STA. II+591.4 LT (1EA)

621.71 GUARDRAIL APPROACH SECTION, TYPE II

ROCHESTER:
STA. II+534.0 - STA. II+537.8 LT (1EA)
STA. II+577.2 - STA. II+581.0 RT (1EA)

621.80 REMOVAL AND DISPOSAL OF GUARDRAIL

ROCHESTER:
STA. II+498.1 - STA. II+538.8 RT (40.7 m)
STA. II+499.1 - STA. II+537.8 LT (38.7 m)
STA. II+576.2 - STA. II+627.1 LT (50.9 m)
STA. II+577.2 - STA. II+619.1 RT (41.9 m)

NOTES:

1. PAVING LIMIT ON ALL TOWN HIGHWAYS SHALL BE MEASURED 8 m BACK FROM VT. ROUTE 100 EDGE OF SHOULDER UNLESS DENOTED OTHERWISE ON THE PLANS OR AS DIRECTED BY THE RESIDENT ENGINEER.

2. SEE SHEET 37 OF 49 FOR BR 144 DETAILS. SEE SHEETS 45 OF 49 & 46 OF 49 FOR BRIDGE APPROACH SECTION DETAILS.

SIGN LEGEND
R= REMOVE
S= SALVAGE
N= NEW
RET= RETAIN
B-B= BACK TO BACK
EXISTING= _____
NEW= _____

PAVING PROJECT LAYOUT	SURVEYED BY <u>N/A</u> DATE <u>N/A</u>
	DRAWN BY <u>C.A.K.</u> DATE <u>11/00</u>
	SQUAD LEADER <u>T.P.K.</u>
	DESIGN FILE NO. <u>/pave/98b180/pbl80.dgn</u>
	IPARM FILE <u>pbl80p04.i</u> DATE PLOTTED <u>21-DEC-2006 15</u>
PROJ. NAME <u>ROCHESTER-GRANVILLE</u>	
PROJ. NO. <u>AC_SIP_2124(1)S</u>	
SHEET <u>12</u> OF <u>49</u> SHEETS _____	

DATUM
VERTICAL N/A
HORIZONTAL N/A