

EXCAVATION OF SURFACES AND PAVEMENTS

EARTH BORROW

STA. 10+140 RT. TO STA. 10+217 RT.

STA. 10+190 RT. TO STA. 10+215 RT.

COMMON EXCAVATION

STA. 2+868 TO STA. 2+984
 STA. 3+005 TO STA. 3+103
 STA. 10+192 TO STA. 10+214
 STA. 10+190 RT. TO STA. 10+215 RT.

REHABILITATION OF DI, CB, OR MH, CLASS I

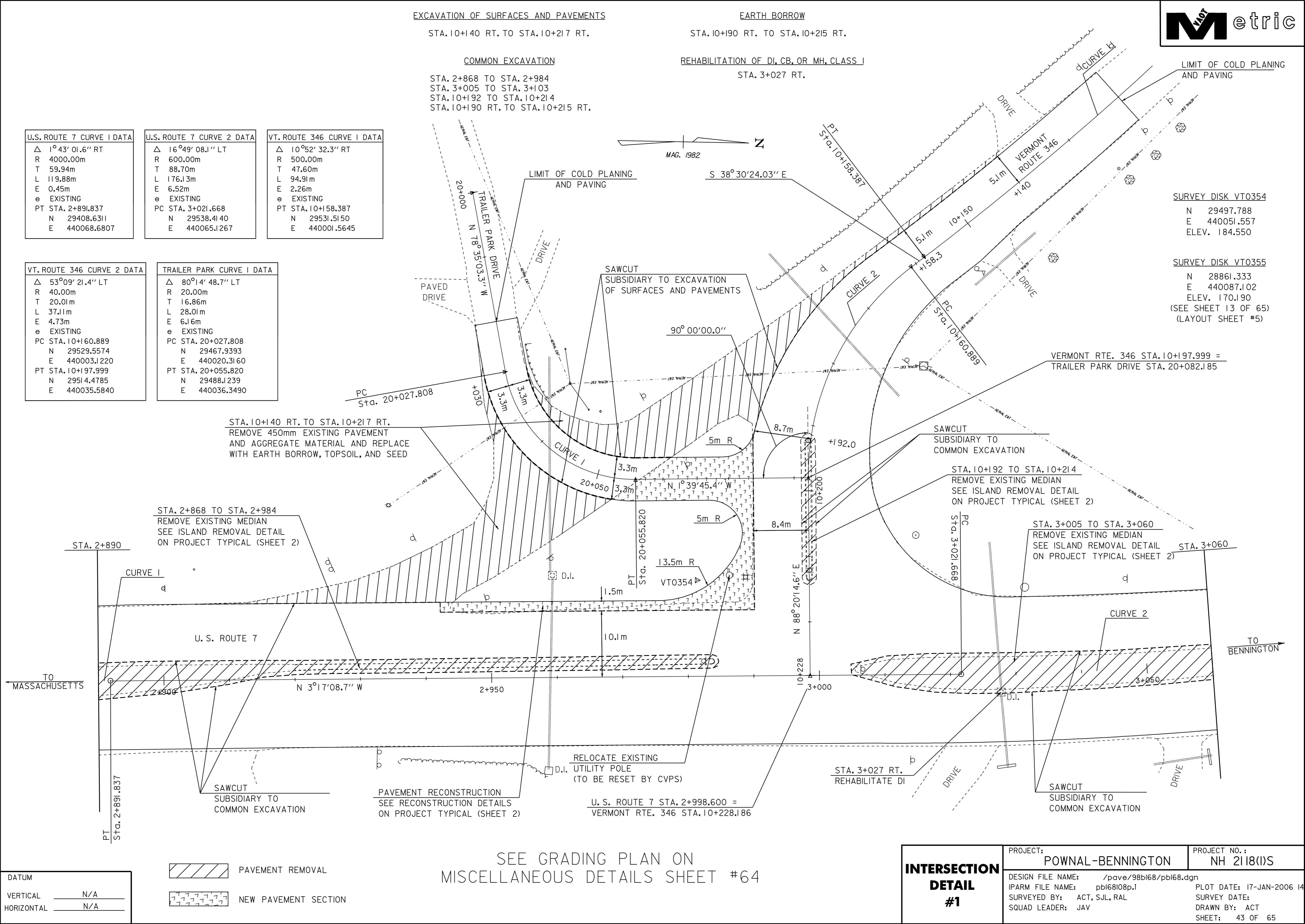
STA. 3+027 RT.

U.S. ROUTE 7 CURVE 1 DATA	U.S. ROUTE 7 CURVE 2 DATA	VT. ROUTE 346 CURVE 1 DATA
Δ 1°43'01.6" RT	Δ 16°49'08.1" LT	Δ 10°52'32.3" RT
R 4000.00m	R 600.00m	R 500.00m
T 59.94m	T 88.70m	T 47.60m
L 119.88m	L 176.13m	L 94.91m
E 0.45m	E 6.52m	E 2.26m
e EXISTING	e EXISTING	e EXISTING
PT STA. 2+891.837	PC STA. 3+021.668	PT STA. 10+158.387
N 29408.6311	N 29538.4140	N 29531.5150
E 440068.6807	E 440065.1267	E 440001.5645

VT. ROUTE 346 CURVE 2 DATA	TRAILER PARK CURVE 1 DATA
Δ 53°09'21.4" LT	Δ 80°14'48.7" LT
R 40.00m	R 20.00m
T 20.01m	T 16.86m
L 37.11m	L 28.01m
E 4.73m	E 6.16m
e EXISTING	e EXISTING
PC STA. 10+160.889	PC STA. 20+027.808
N 29529.5574	N 29467.9393
E 440003.1220	E 440020.3160
PT STA. 10+197.999	PT STA. 20+055.820
N 29514.4785	N 29488.1239
E 440035.5840	E 440036.3490

SURVEY DISK VT0354
 N 29497.788
 E 440051.557
 ELEV. 184.550

SURVEY DISK VT0355
 N 28861.333
 E 440087.102
 ELEV. 170.190
 (SEE SHEET 13 OF 65)
 (LAYOUT SHEET #5)



STA. 10+140 RT. TO STA. 10+217 RT.
 REMOVE 450mm EXISTING PAVEMENT
 AND AGGREGATE MATERIAL AND REPLACE
 WITH EARTH BORROW, TOPSOIL, AND SEED

STA. 2+868 TO STA. 2+984
 REMOVE EXISTING MEDIAN
 SEE ISLAND REMOVAL DETAIL
 ON PROJECT TYPICAL (SHEET 2)

SAWCUT
 SUBSIDIARY TO
 COMMON EXCAVATION

STA. 10+192 TO STA. 10+214
 REMOVE EXISTING MEDIAN
 SEE ISLAND REMOVAL DETAIL
 ON PROJECT TYPICAL (SHEET 2)

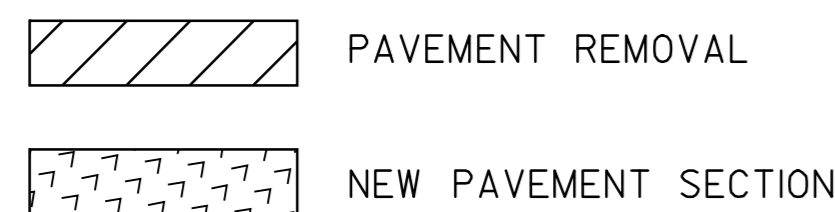
STA. 3+005 TO STA. 3+060
 REMOVE EXISTING MEDIAN
 SEE ISLAND REMOVAL DETAIL
 ON PROJECT TYPICAL (SHEET 2)

PAVEMENT RECONSTRUCTION
 SEE RECONSTRUCTION DETAILS
 ON PROJECT TYPICAL (SHEET 2)

U. S. ROUTE 7 STA. 2+998.600 =
 VERMONT RTE. 346 STA. 10+228.186

SEE GRADING PLAN ON
 MISCELLANEOUS DETAILS SHEET #64

DATUM	
VERTICAL	N/A
HORIZONTAL	N/A



INTERSECTION DETAIL #1	PROJECT:	POWNAL-BENNINGTON	PROJECT NO.:	NH 2118(I)S
	DESIGN FILE NAME:	/pave/98bl68/pbl68.dgn	PLOT DATE:	17-JAN-2006 14
	IPARM FILE NAME:	pbl68i08p.l	SURVEY DATE:	
	SURVEYED BY:	ACT, SJL, RAL	DRAWN BY:	ACT
	SQUAD LEADER:	JAV	SHEET:	43 OF 65