

TEMPORARY AND DURABLE 100mm YELLOW LINE

STA. 2+430.0 TO STA. 2+730.0 SOLID LT. AND RT.

TEMPORARY AND DURABLE 100mm WHITE LINE

STA. 2+430.0 TO STA. 2+730.0 SOLID LT. AND RT. (EDGE LINE)

MANUFACTURED TERMINAL SECTION (FLARED)

STA. 2+636.0 LT. TO STA. 2+647.4 LT.
STA. 2+705.0 RT. TO STA. 2+716.4 RT.

REMOVAL AND DISPOSAL OF GUARD RAIL

STA. 2+636.0 LT. TO STA. 2+730.0 LT.
STA. 2+705.0 RT. TO STA. 2+716.4 RT.

NEW STEEL BEAM GUARDRAIL

STA. 2+647.4 LT. TO STA. 2+730 LT.

SHOULDER BERM REMOVAL

~~STA. 2+647 LT. TO STA. 2+730 LT.~~
~~STA. 2+716 RT. TO STA. 2+730 RT.~~

REMOVING SIGNS

~~14 +5~~ -- AS SHOWN

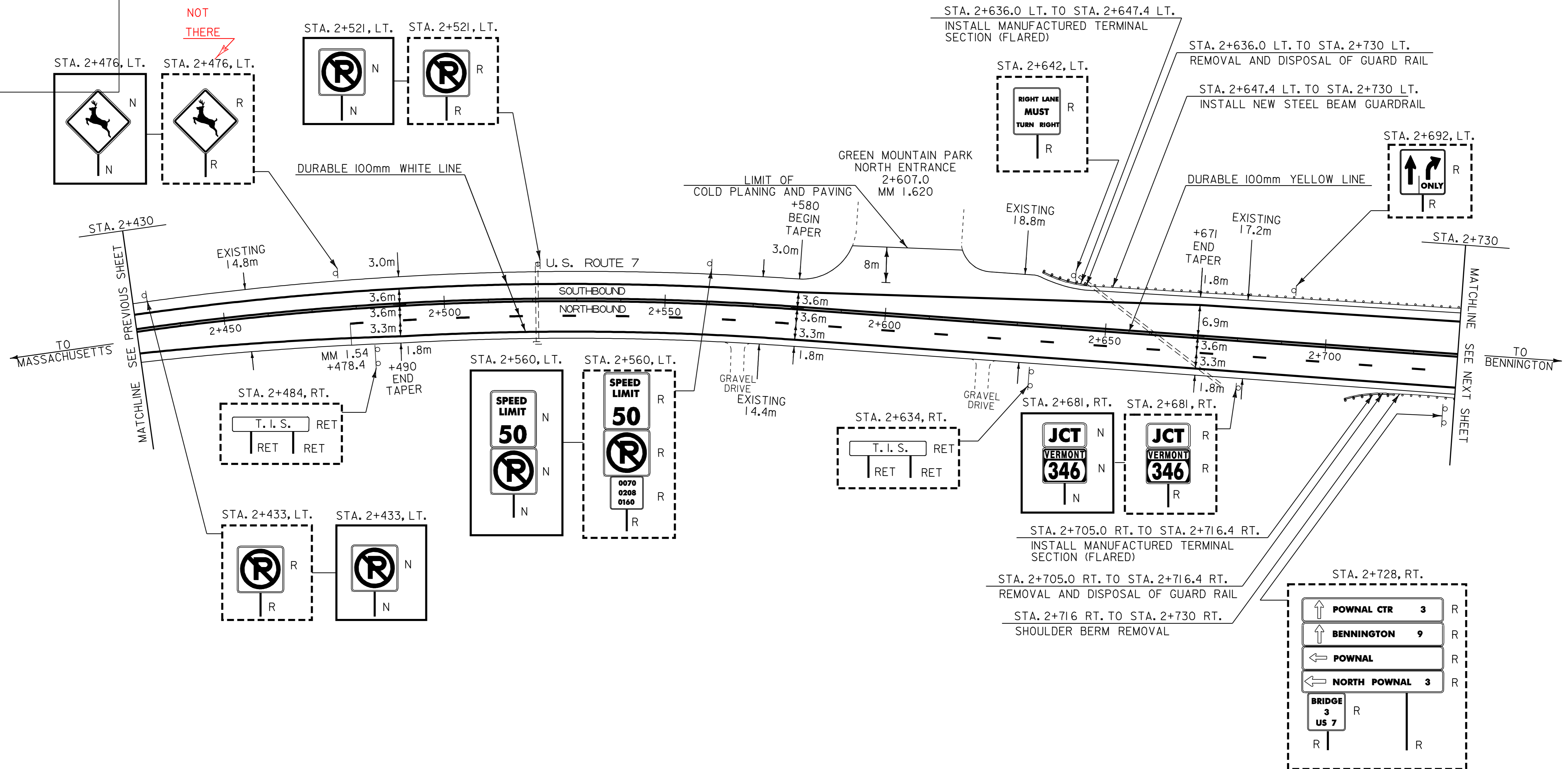
THINNING AND TRIMMING FOR SIGNS
STA. 2+681.0 RT.

DURABLE 100mm YELLOW LINE (POLYUREA)

STA. 2+430 TO STA. 2+730 (LT. & RT.)

DURABLE 100mm WHITE LINE (POLYUREA)

STA. 2+430 TO STA. 2+730 (EDGE LINE)



LEGEND

- N = NEW
- R = REMOVE
- R & S = REMOVE AND SALVAGE
- S = SALVAGE SIGN
- RET = RETAIN
- B - B = BACK TO BACK

**PAVING
PROJECT
LAYOUT
#6**

PROJECT: POWNAVAL-BENNINGTON	PROJECT NO.: NH 2118(I)S
DESIGN FILE NAME: /pave/98bl68/pbl68.dgn	PLOT DATE: 17-JAN-2006 14
IPARM FILE NAME: pbl68106.i	SURVEY DATE:
SURVEYED BY: ACT, SJL, RAL	DRAWN BY: ACT
SQUAD LEADER: JAV	SHEET: 14 OF 65

DATUM	
VERTICAL	N/A
HORIZONTAL	N/A