

TEMPORARY AND DURABLE 100mm YELLOW LINE

STA. 1+390.0 TO STA. 1+730.0 SOLID DOUBLE LT. AND RT.  
(WITH CENTERLINE BREAK FOR SIDE ROAD)  
STA. 1+495 RT. (T.H. 50)

TEMPORARY AND DURABLE 100mm WHITE LINE

STA. 1+390.0 TO STA. 1+730.0 SOLID LT. AND RT. (EDGE LINE)  
(WITH EDGE LINE BREAK FOR SIDE ROAD)

TEMPORARY AND DURABLE 600mm STOP BAR

STA. 1+495 RT. (T.H. 50)

TEMPORARY AND DURABLE LETTER OR SYMBOL

STA. 1+495 RT. - "STOP" (T.H. 50)

SHOULDER BERM REMOVAL

STA. 1+390 RT. TO STA. 1+455 RT.  
STA. 1+420 LT. TO STA. 1+463 LT.  
~~STA. 1+651 LT. TO STA. 1+730 LT.~~

MANUFACTURED TERMINAL SECTION (FLARED)

STA. 1+409.0 LT. TO STA. 1+420.4 LT.  
STA. 1+454.6 RT. TO STA. 1+466.0 RT.  
STA. 1+462.6 LT. TO STA. 1+474.0 LT.  
STA. 1+640.0 LT. TO STA. 1+651.4 LT.

REMOVAL AND DISPOSAL OF GUARD RAIL

STA. 1+409.0 LT. TO STA. 1+420.4 LT.  
STA. 1+454.6 RT. TO STA. 1+466.0 RT.  
STA. 1+462.6 LT. TO STA. 1+474.0 LT.  
STA. 1+640.0 LT. TO STA. 1+730.0 LT.

REMOVING SIGNS

4 -- AS SHOWN

REMOVING SIGNS (MOD.)

1 -- AS SHOWN

STEEL BEAM GUARDRAIL

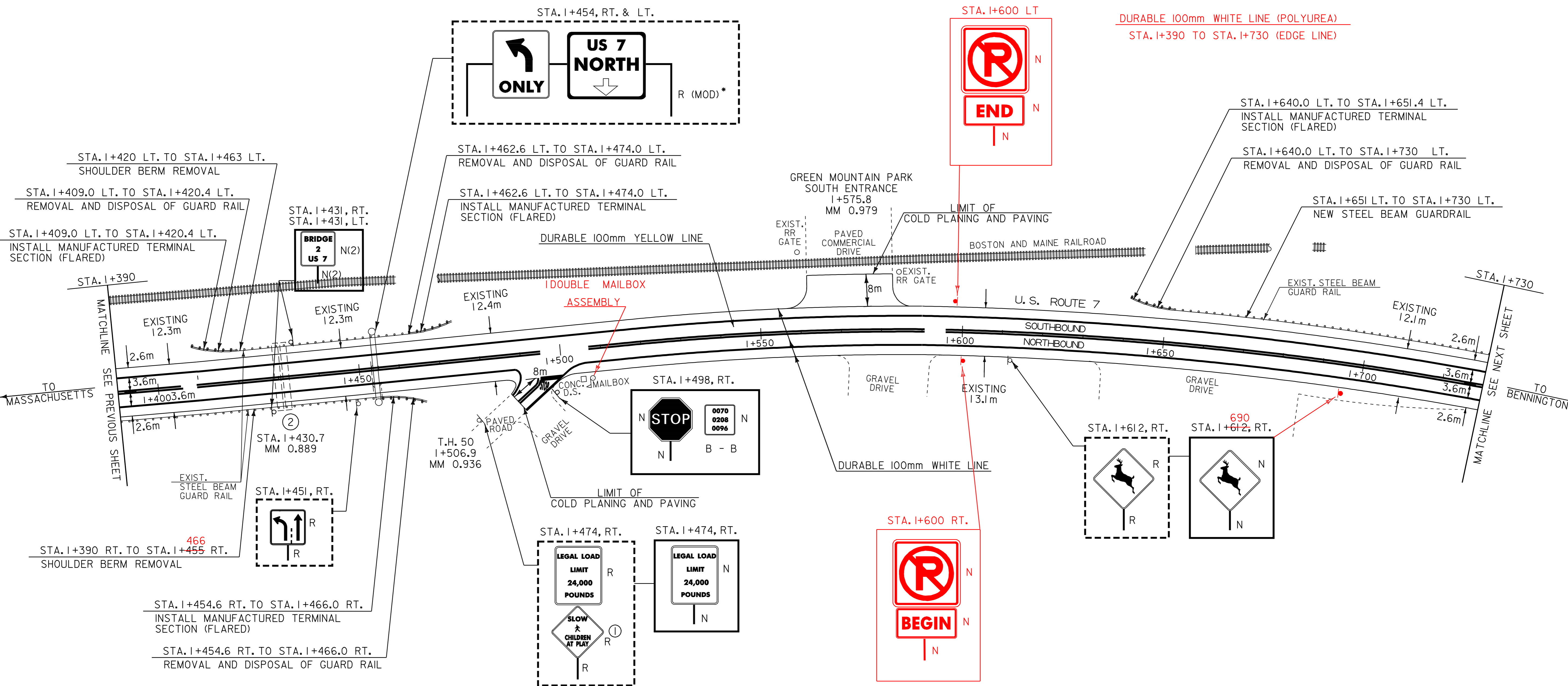
STA. 1+651 LT. TO STA. 1+730 LT.

DURABLE 100mm YELLOW LINE (POLYUREA)

STA. 1+390 TO STA. 1+730 (LT & RT)

DURABLE 100mm WHITE LINE (POLYUREA)

STA. 1+390 TO STA. 1+730 (EDGE LINE)



LEGEND  
 N = NEW  
 R = REMOVE  
 R & S = REMOVE AND SALVAGE  
 S = SALVAGE SIGN  
 RET = RETAIN  
 B - B = BACK TO BACK  
 ① = RETURN TO TOWN OF POWNAL

\* REMOVE OVERHEAD SIGNS, SIGN STRUCTURE AND BASES

<b>PAVING PROJECT LAYOUT #4</b>	PROJECT: POWNAL-BENNINGTON	PROJECT NO.: NH 2118(I)S
	DESIGN FILE NAME: /pave/98bl68/pbl68.dgn	PLOT DATE: 17-JAN-2006 14
	IPARM FILE NAME: pbl68l04.1	SURVEY DATE:
	SURVEYED BY: ACT, SJL, RAL	DRAWN BY: ACT
	SQUAD LEADER: JAV	SHEET: 12 OF 65

DATUM	
VERTICAL	N/A
HORIZONTAL	N/A