

GPS CONTROL POINTS

HVCTRL # 1

STANDARD DISK STAMPED
 Davies
 N = 352164.991
 E = 1452010.692
 ELEV. = 498.10

TO REACH FROM THE INTERSECTION OF VT 30 AND VT. ROUTE 1 IN POULTNEY GO EAST AND THEN SOUTH ALONG VT 30 FOR 4.0 MI (6.4 KM) TO THE INTERSECTION OF CONES POINT ROAD RIGHT. TURN RIGHT AND GO WEST AND SOUTH ALONG CONES POINT ROAD FOR 0.7 MI (1.1 KM) TO THE END OF THE ROAD AND THE MARK ON THE LEFT. IT IS 43.3 M (142.1 FT) SOUTHEAST OF AND ABOUT 1 M (3.3 FT) LOWER THAN THE CENTERLINE OF CONES POINT ROAD, 29.5 M (96.8 FT) NORTH OF THE NORTHEAST CORNER OF THE 1/2 STORY DAVIES HOUSE, 14.9 M (48.9 FT) NORTH OF A 0.2 M (0.7 FT) X 0.2 M (0.7 FT) X 0.8 M (2.6 FT) HIGH STONE POST WHICH IS ON THE POULTNEY / WELLS TOWN LINE, 40.0 M (131.2 FT) SOUTHEAST OF POLE NO. 7115, 17.2 M (56.4 FT) SOUTHWEST OF THE SOUTHWEST CORNER OF A ONE STORY HOUSE, AND 37.0 M (121.4 FT) EAST OF A FIBERGLASS WITNESS POST.

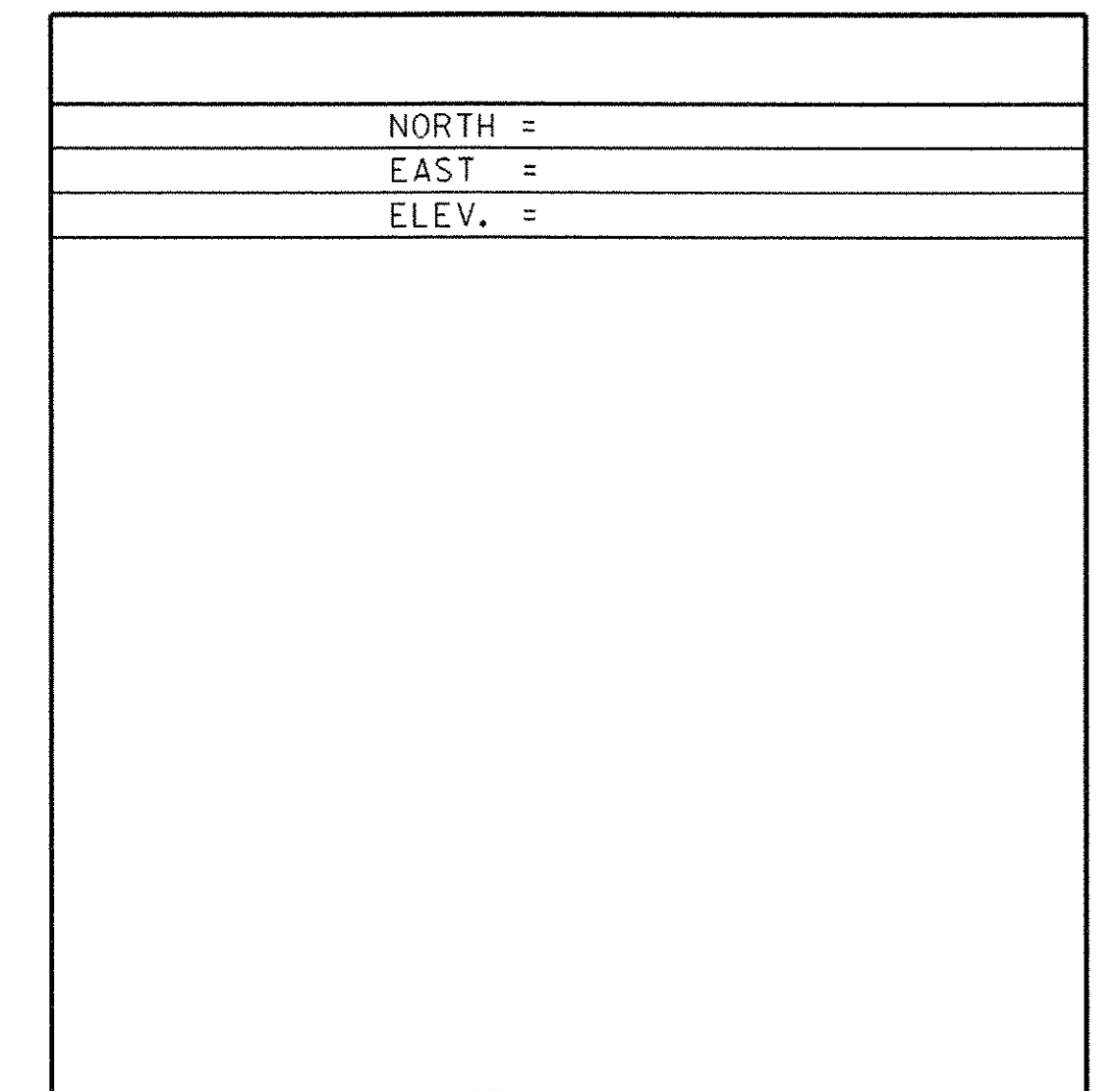
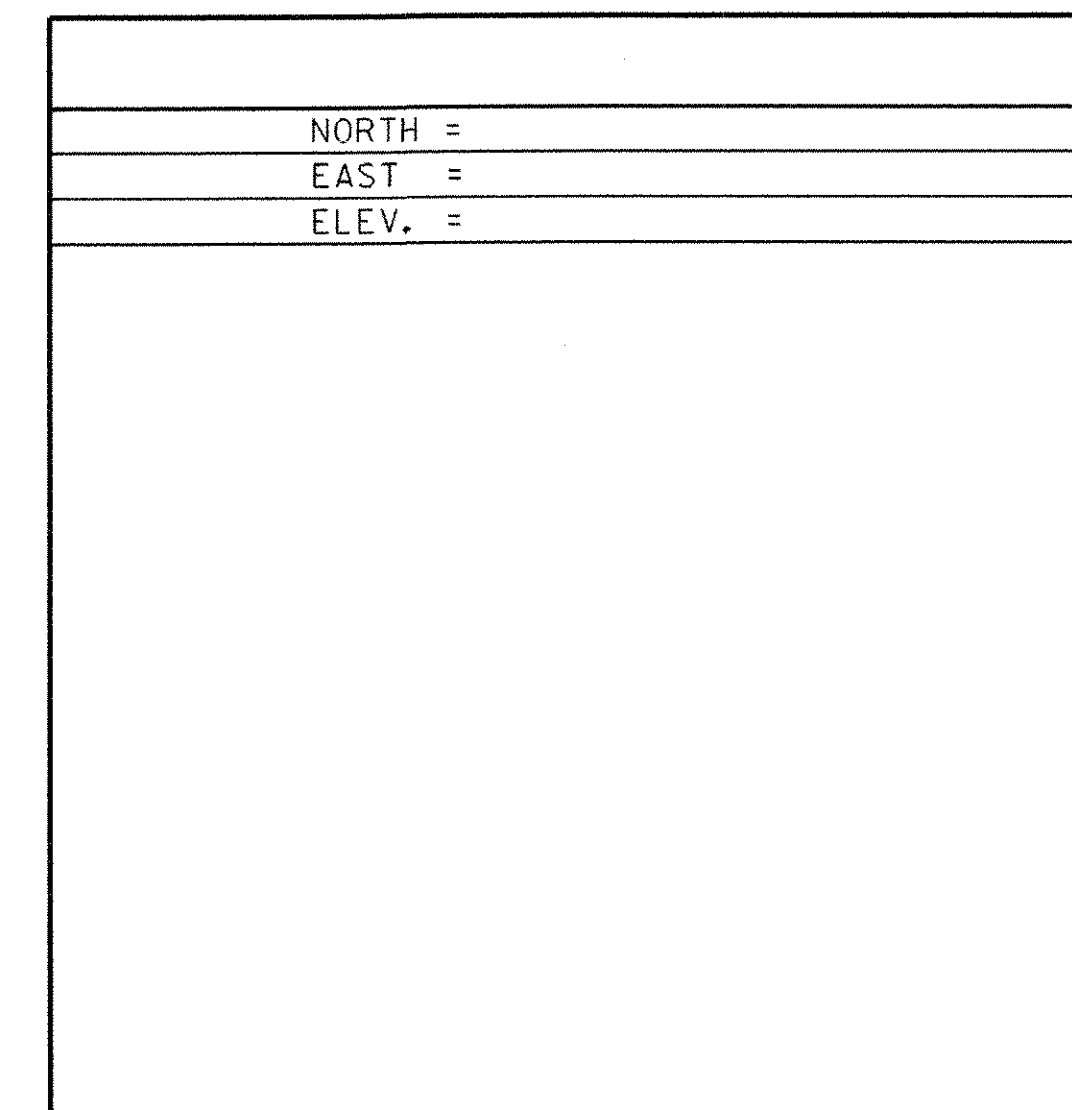
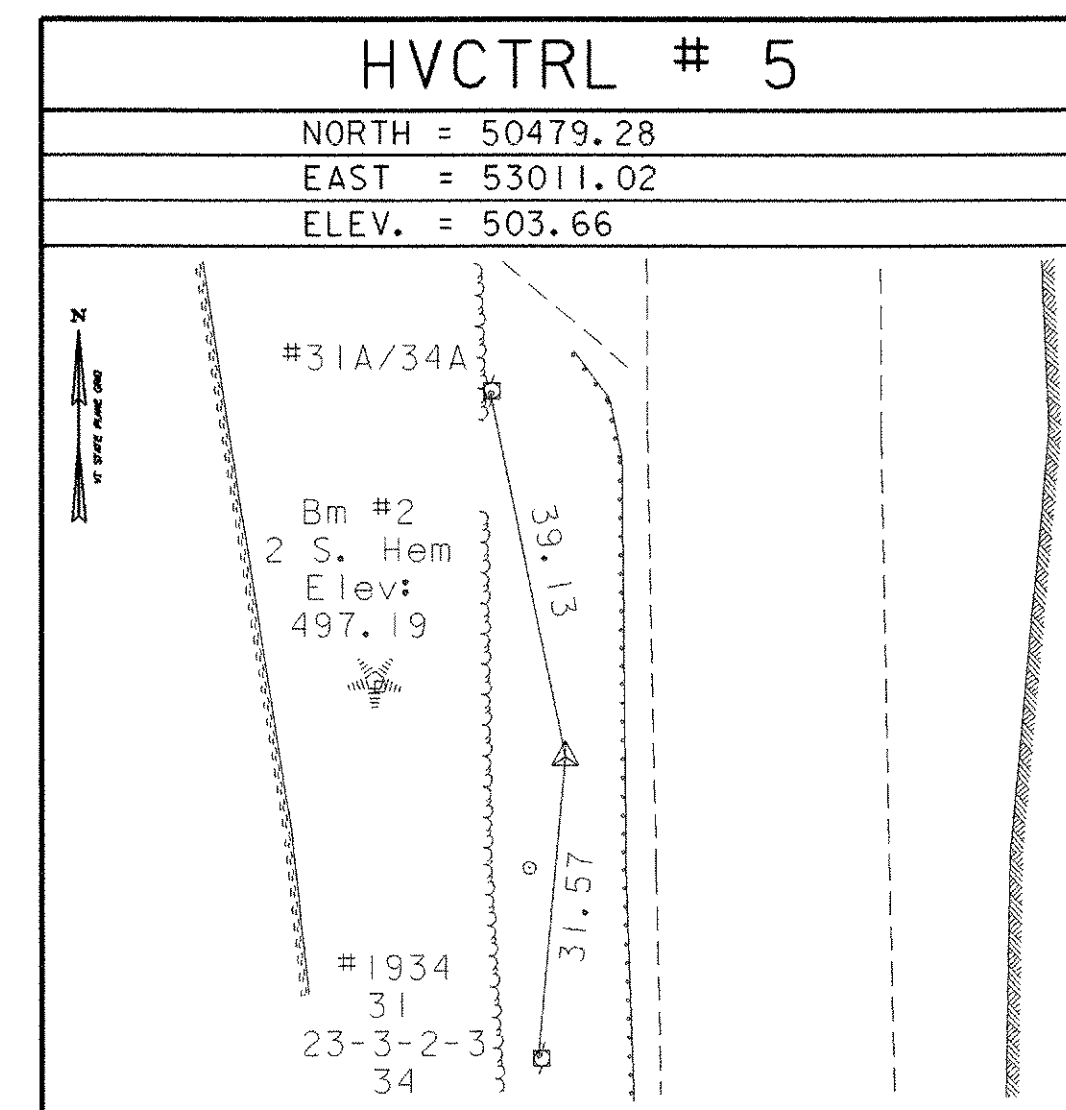
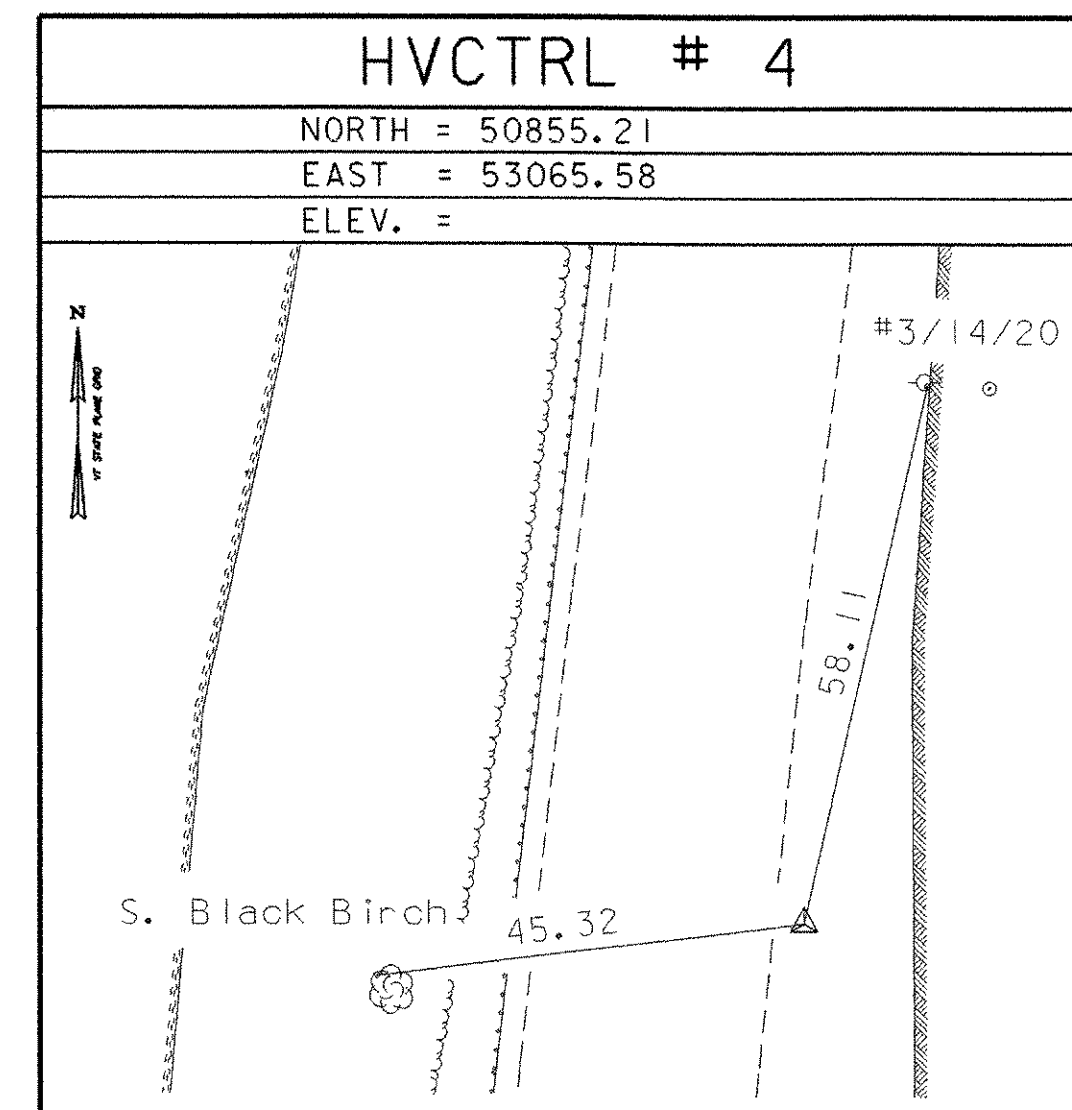
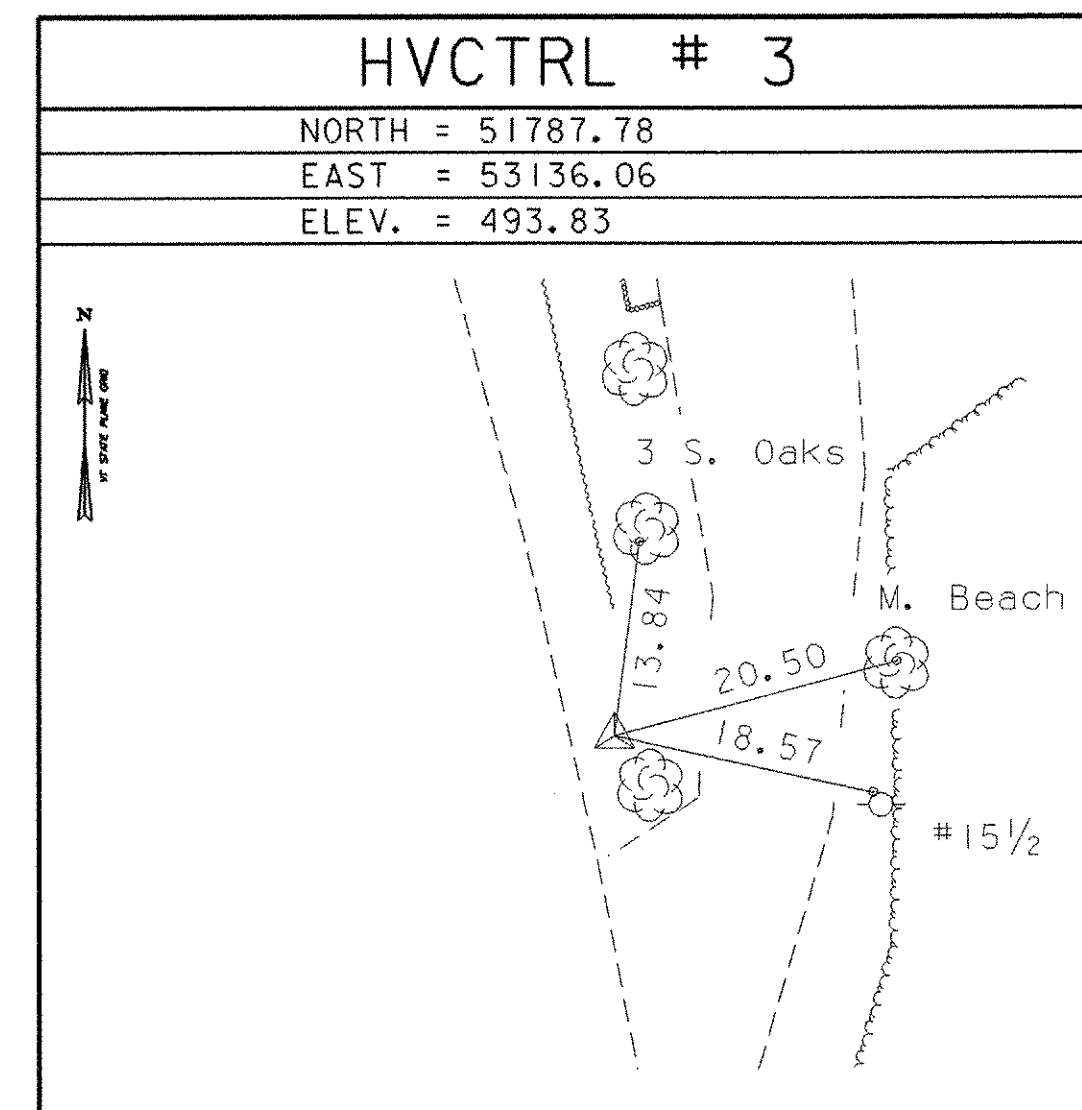
- DESCRIPTION PROVIDED BY VERMONT AGENCY OF TRANSPORTATION GEODETIC SURVEY UNIT
- TO ALLOW THE STATE PLANE COORDINATES TO FIT THE AGENCY DESIGN PLANE, SUBTRACT 300,000 FROM THE NORTHING AND SUBTRACT 1,400,000 FROM THE EASTING

HVCTRL # 2

STANDARD DISK STAMPED
 Davies Az Mk
 N = 35192.808
 E = 1453081.920
 ELEV. = 500.23

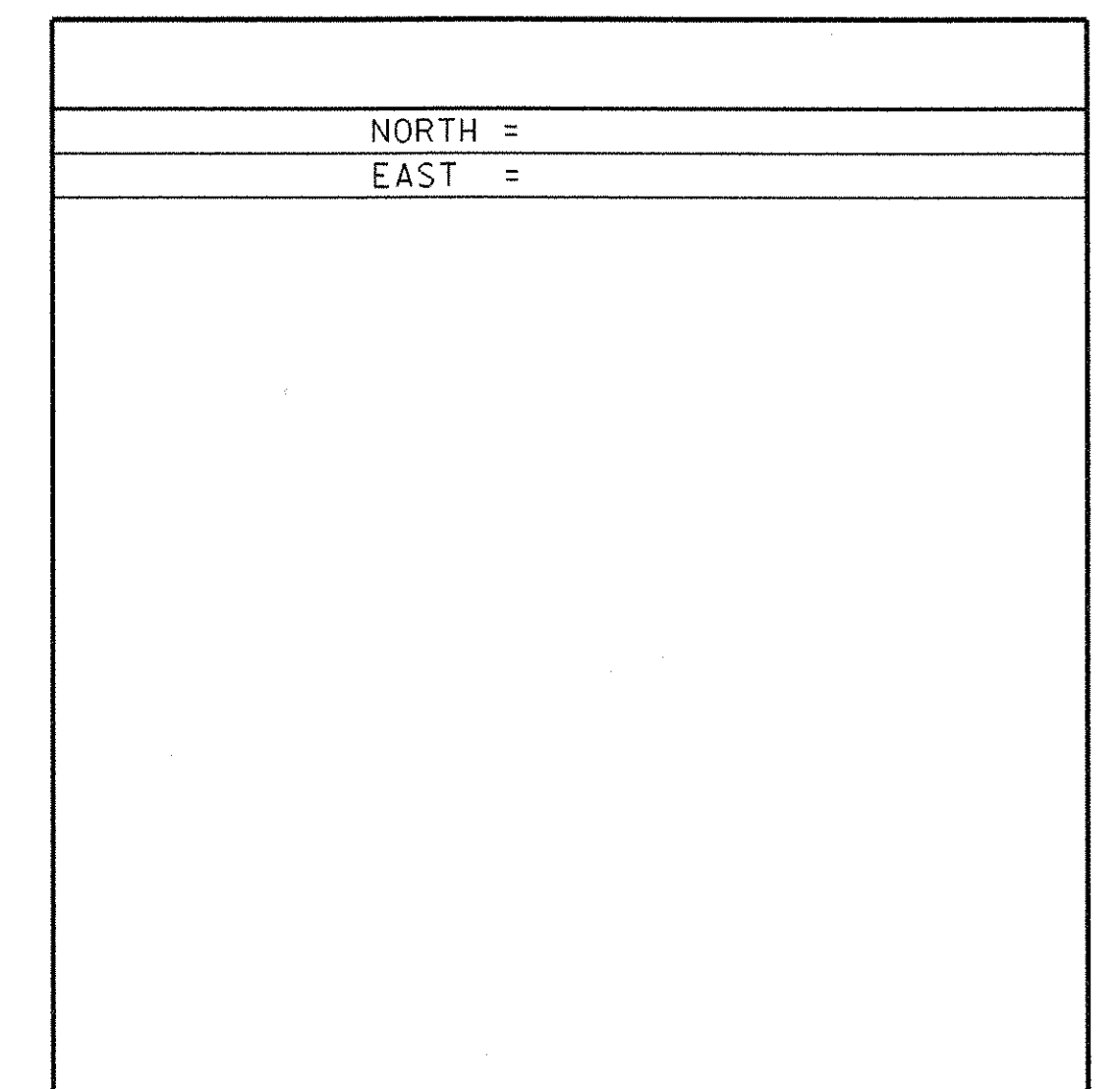
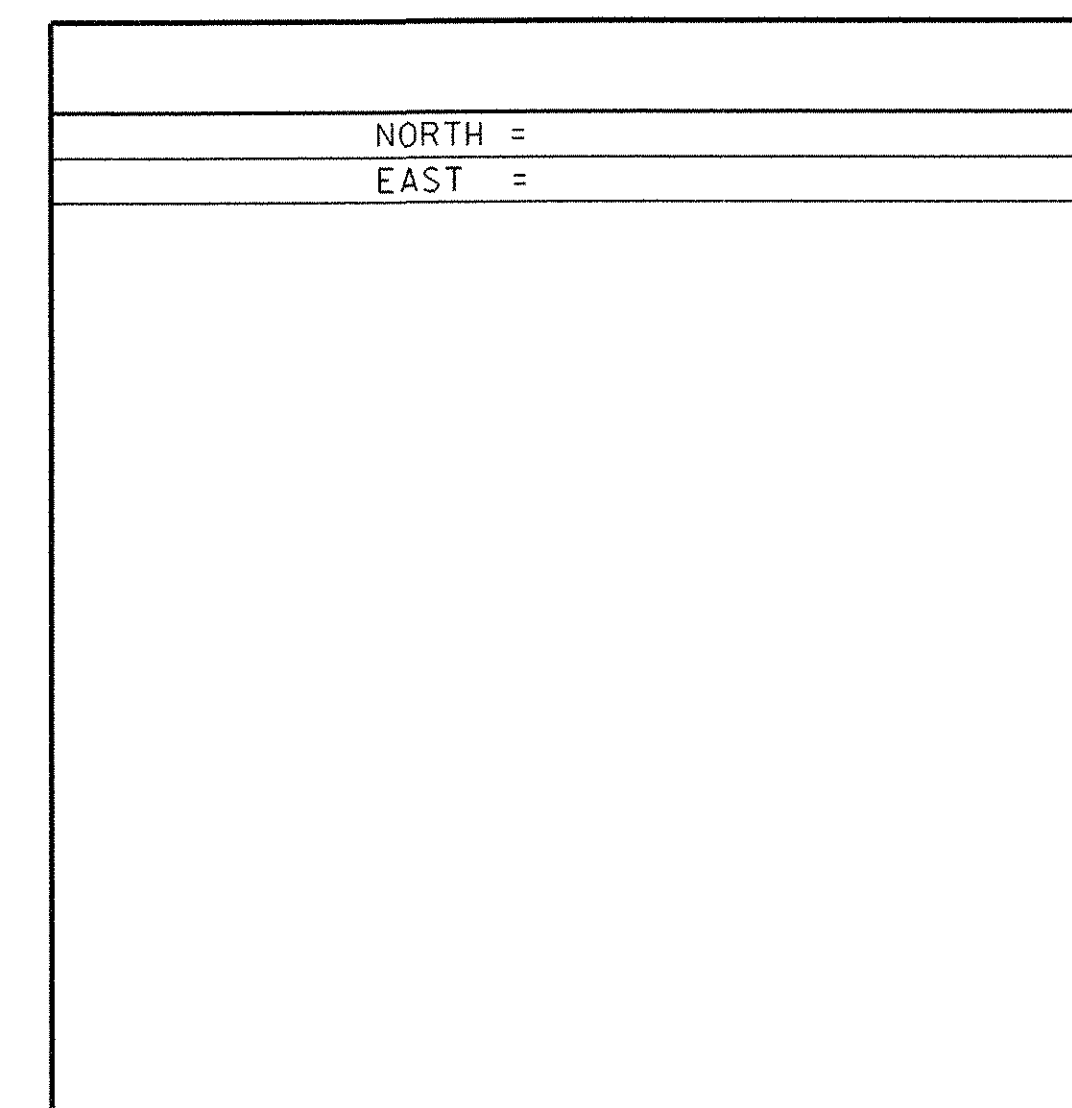
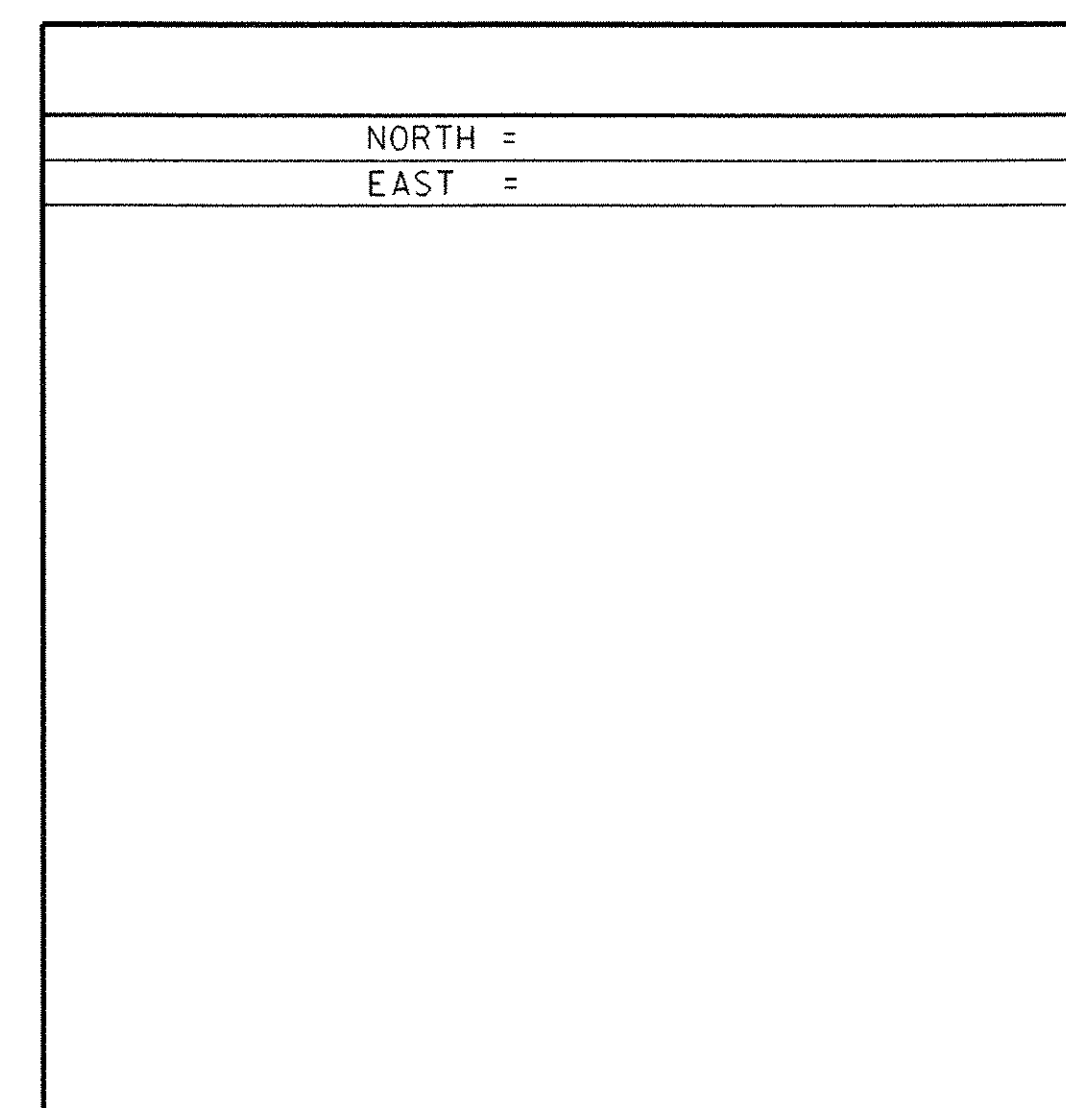
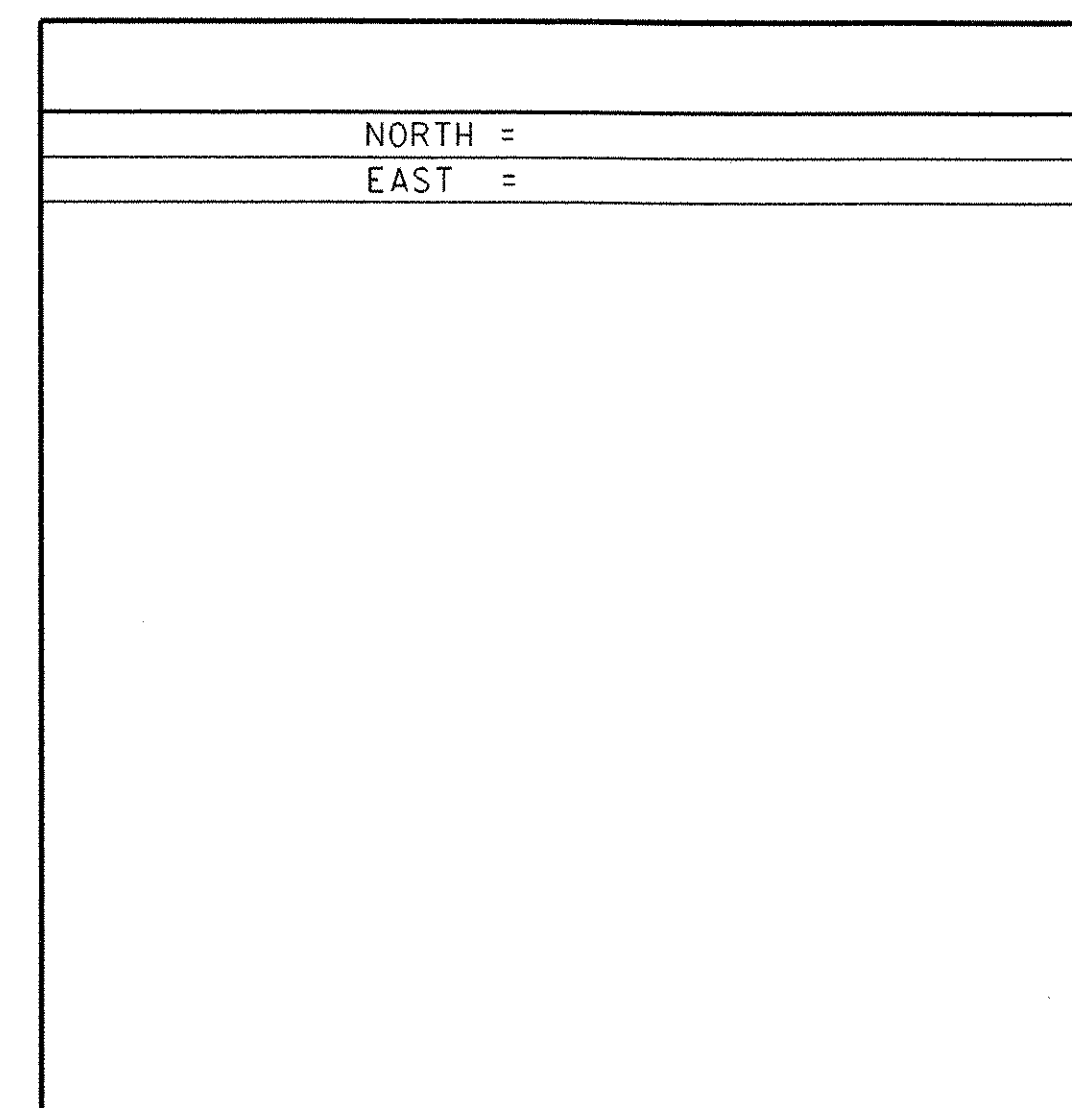
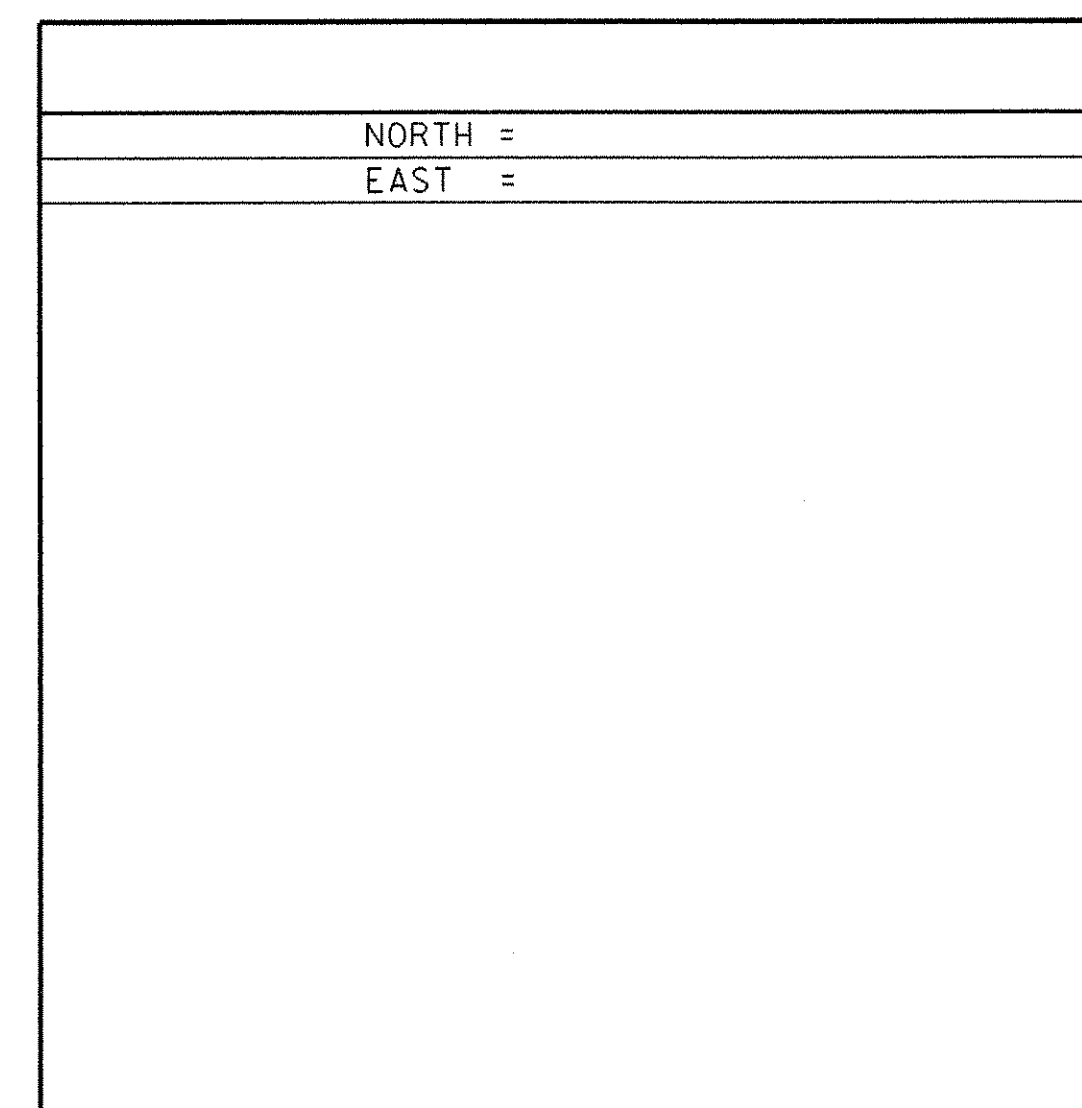
TO REACH FROM THE INTERSECTION OF VT 30 AND VT 31 IN POULTNEY GO SOUTH ALONG VT 30 FOR 4.0 MI (6.4 KM) TO THE INTERSECTION OF CONES POINT ROAD RIGHT. CONTINUE STRAIGHT ALONG VT ROUTE 30 SOUTH FOR 0.7 MI (1.1 KM) TO THE MARK ON THE RIGHT. IT IS 4.3 M (14.1 FT) WEST OF AND ABOUT 0.3 M (1.0 FT) LOWER THAN THE CENTERLINE OF ROUTE 30, 0.3 M (1.0 FT) WEST OF THE WEST FACE OF A STEEL BEAM GUARD RAIL, 23.0 M (75.5 FT) NORTHWEST OF POLE NO. 19, 43.9 M (144.0 FT) SOUTHWEST OF POLE NO. 18, AND 0.4 M (1.3 FT) SOUTH OF A FIBERGLASS WITNESS POST.

TRAVERSE TIES



• MAIN TRAVERSE COMPLETED 07/06/98 by L. Orvis & G. Wilson

ALIGNMENT TIES



• ALIGNMENT STAKED

DATUM	
VERTICAL	NAVD 88
HORIZONTAL	NAD 83 (96)
ADJUSTMENT	Least Sq.

PROJECT NAME:	Wells
PROJECT NUMBER:	STP 015-2 (7)S
FILE NAME:	96b160/survey/xbl60t1.dgn
PROJECT LEADER:	DRAWN BY: R. Bullock
DESIGNED BY:	CHECKED BY:
TIE SHEET	SHEET 16 OF 32
	PLOT DATE: 01-FEB-2006