

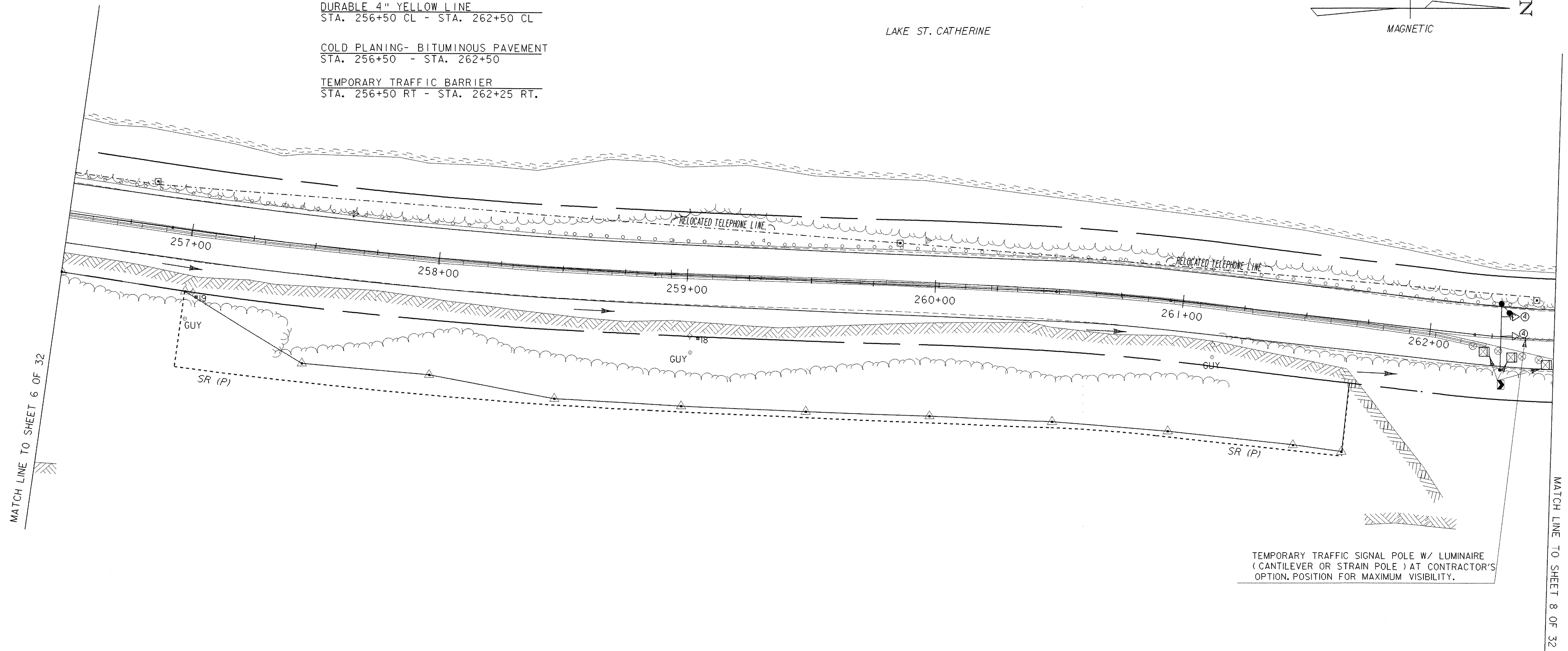
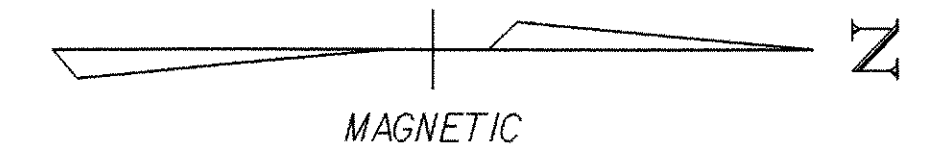
DURABLE 4" WHITE LINE  
 STA. 256+50 RT - STA. 262+50 RT  
 STA. 256+50 LT - STA. 262+50 LT

DURABLE 4" YELLOW LINE  
 STA. 256+50 CL - STA. 262+50 CL

COLD PLANING- BITUMINOUS PAVEMENT  
 STA. 256+50 - STA. 262+50

TEMPORARY TRAFFIC BARRIER  
 STA. 256+50 RT - STA. 262+25 RT.

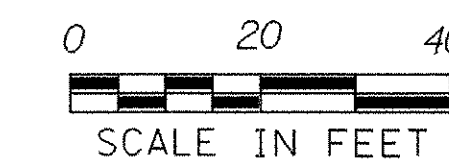
LAKE ST. CATHERINE



TEMPORARY TRAFFIC SIGNAL POLE W/ LUMINAIRE  
 (CANTILEVER OR STRAIN POLE) AT CONTRACTOR'S  
 OPTION. POSITION FOR MAXIMUM VISIBILITY.

**LEGEND**

- — TRAFFIC SIGNAL POLE WITH LUMINAIRE
- ⊗ — REFLECTORIZED PLASTIC DRUMS (SEE STD. E-106).  
DRUM SPACING (IN FEET) IS EQUAL  
TO DETOUR SPEED (IN MPH)
- — TYPE III BARRICADES SEE STD. E-107A
- ⊠ — TYPE III BARRICADES (MOD.) SEE STD. E-107A
- /// — PAVEMENT MARKING REMOVAL
- ⊙ — SIGNAL HEAD AND PHASE
- ⊛ — FLASHING BEACON



**DATUM**  
 VERTICAL NAVD 88  
 HORIZONTAL NAD 83 (96)

PROJECT: WELLS VT RTE 30	PROJECT NO.: STP 015-2(7)S
DESIGN FILE NAME: /sqdb/98b160/db160bdr.dgn	PLOT DATE: 01-FEB-2006
IPARM FILE NAME: db160103.i	SURVEY DATE:
SURVEYED BY:	DRAWN BY: A.JONES
SQUAD LEADER: DELLA SANTA	SHEET: 7 OF 32
LAYOUT SHEET 3	