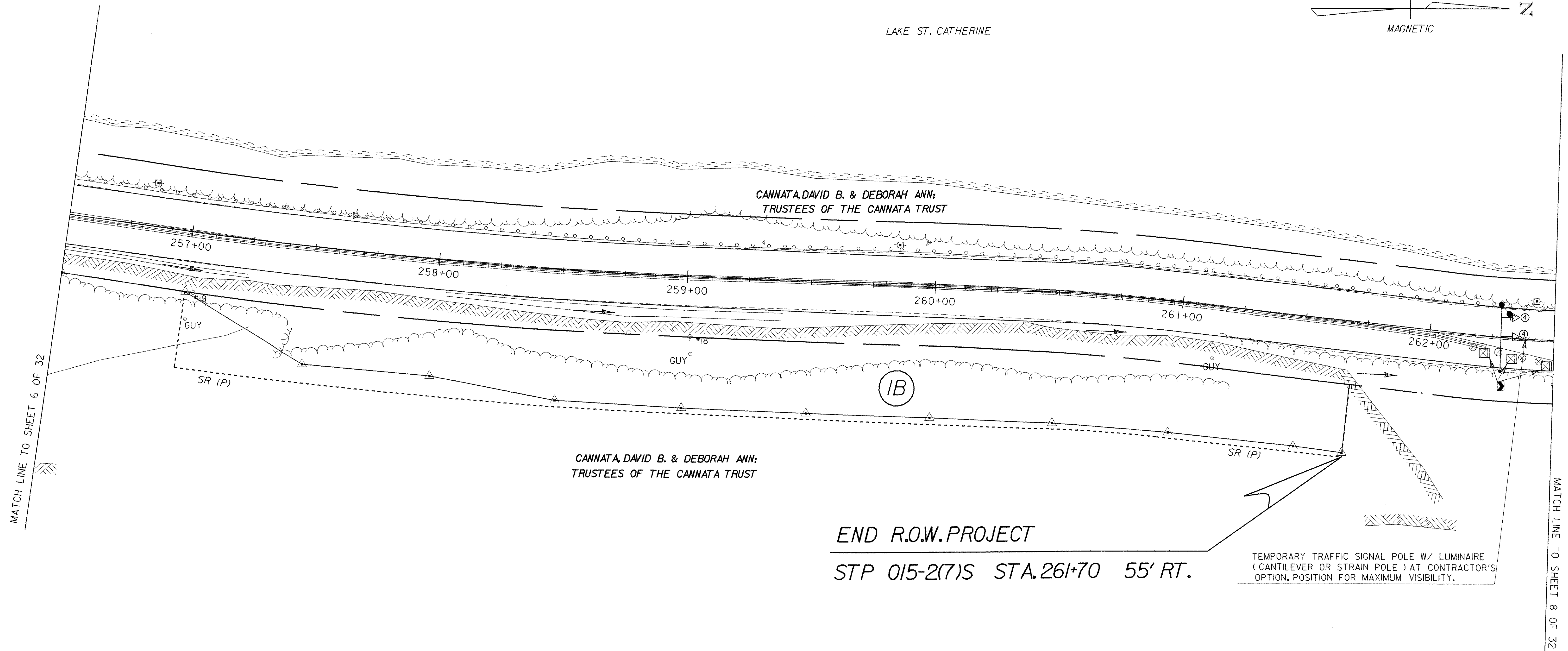
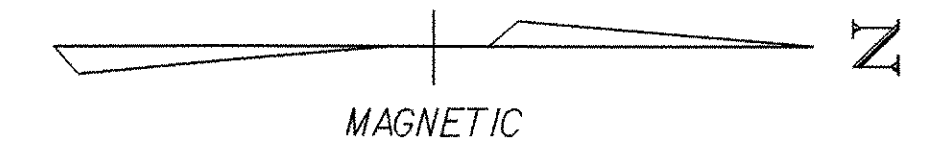


LAKE ST. CATHERINE



END R.O.W. PROJECT
STP 015-2(7)S STA. 261+70 55' RT.

TEMPORARY TRAFFIC SIGNAL POLE W/ LUMINAIRE
(CANTILEVER OR STRAIN POLE) AT CONTRACTOR'S
OPTION. POSITION FOR MAXIMUM VISIBILITY.

**FOR R.O.W.
USE ONLY**

LINES SHOWN ON THIS PLAN AS EXISTING
PROPERTY LINES (P/L) ARE BELIEVED TO
BE ACCURATE BUT SHOULD NOT BE RELIED
UPON FOR PURPOSES UNRELATED TO THE
STATE OF VERMONT'S ACQUISITION OF LAND
AND RIGHTS FOR THIS PROJECT.

LEGEND

- — TRAFFIC SIGNAL POLE WITH LUMINAIRE
- ⊗ — REFLECTORIZED PLASTIC DRUMS (SEE STD. E-106).
DRUM SPACING (IN FEET) IS EQUAL
TO DETOUR SPEED (IN MPH)
- — TYPE III BARRICADES SEE STD. E-107A
- ⊠ — TYPE III BARRICADES (MOD.) SEE STD. E-107A
- /// — PAVEMENT MARKING REMOVAL
- ▷② — SIGNAL HEAD AND PHASE
- ⊕ — FLASHING BEACON

DATUM
 VERTICAL NAVD 88
 HORIZONTAL NAD 83 (96)



PROJECT: WELLS VT RTE 30	PROJECT NO.: STP 015-2(7)S
DESIGN FILE NAME: /sqdb/98b160/db160bdr.dgn	PLOT DATE: 01-FEB-2006
IPARM FILE NAME: db160103.i	SURVEY DATE:
SURVEYED BY:	DRAWN BY: A.JONES
SQUAD LEADER: DELLA SANTA	R. O. W. SHEET 5 OF 5 SHEETS
	4B OF 32 SHEETS