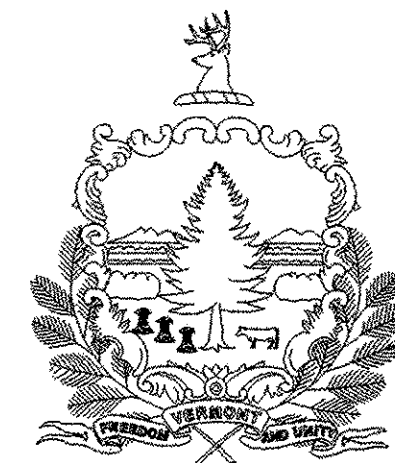


STATE OF VERMONT AGENCY OF TRANSPORTATION

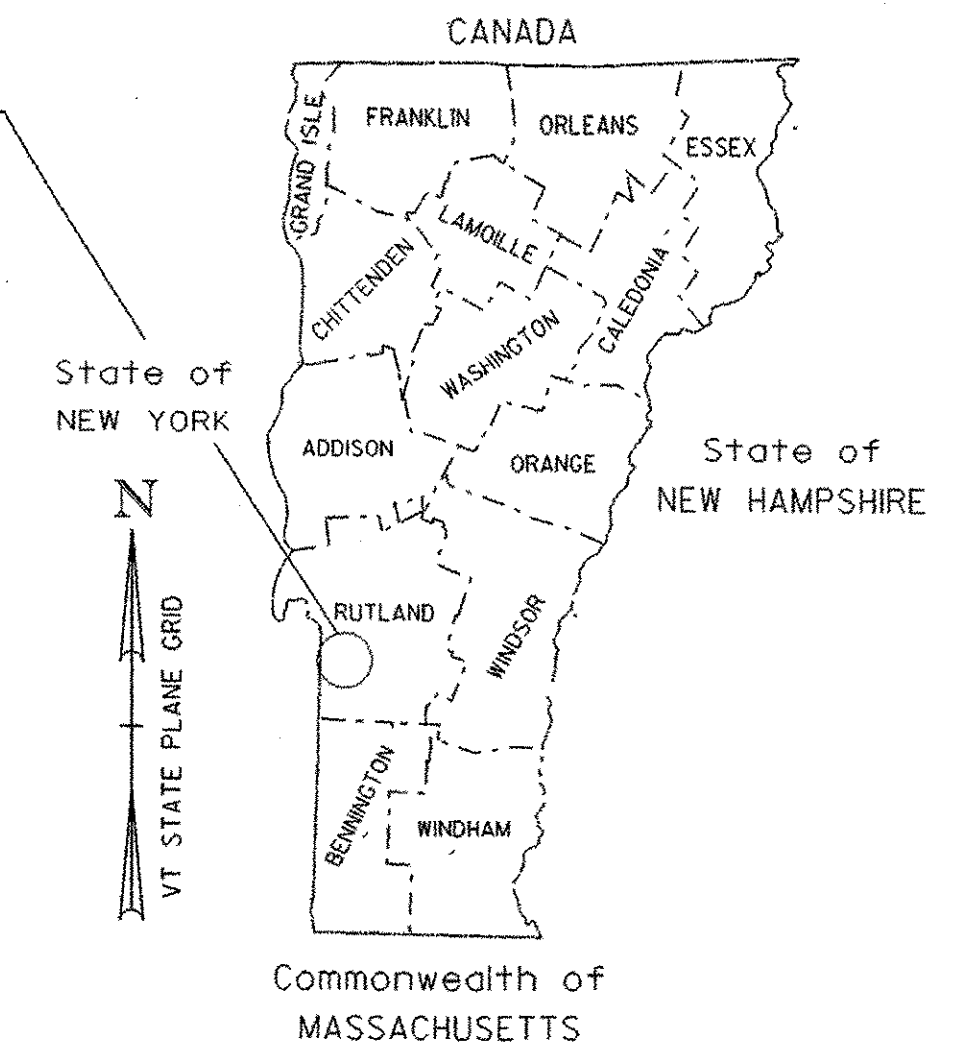
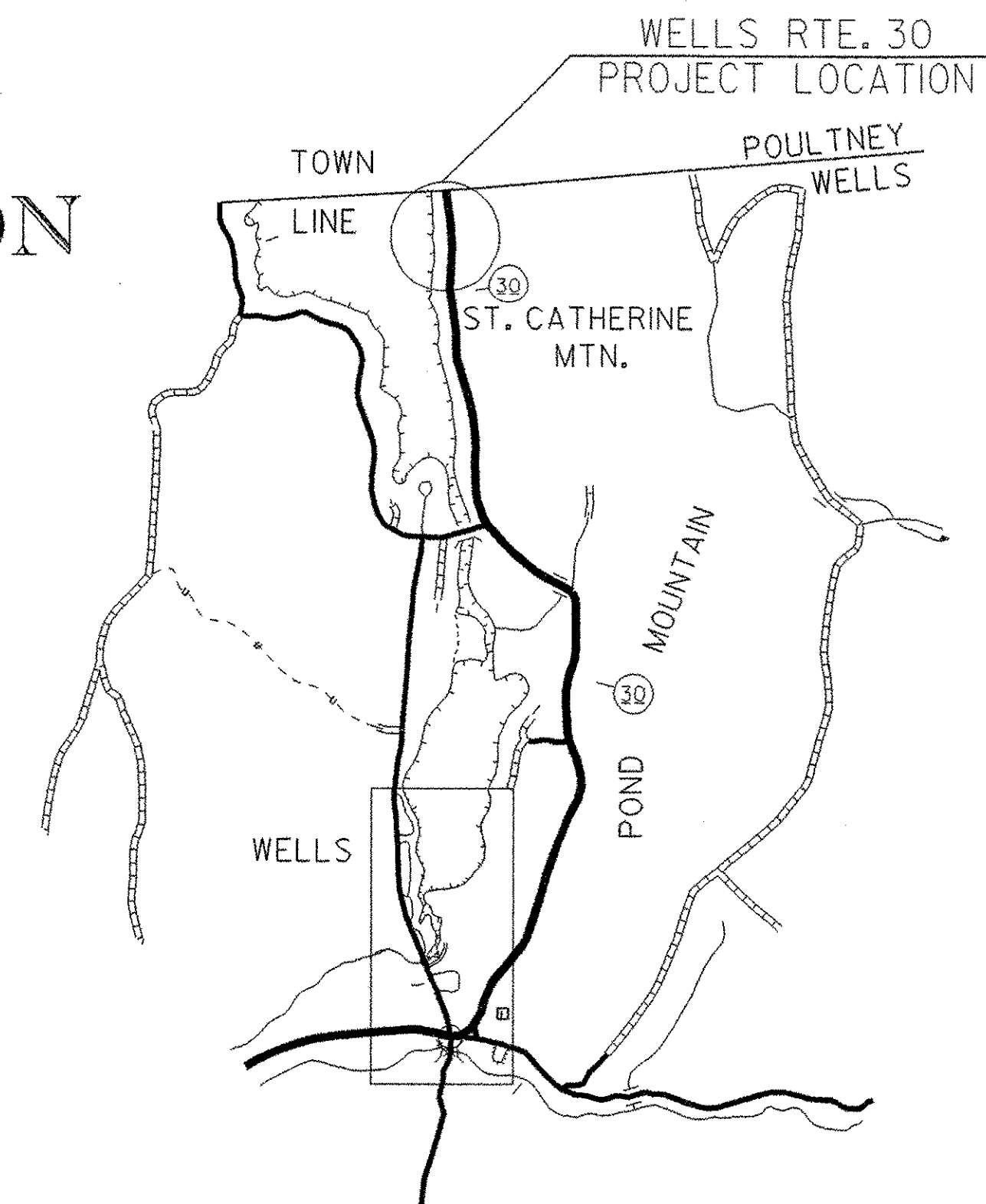


PROPOSED IMPROVEMENT TOWN OF WELLS COUNTY OF RUTLAND VT ROUTE 30

BEGINNING AT A POINT, IN THE TOWN OF WELLS, ON VT. RTE. 30,
APPROXIMATELY 4.68 MILES NORTH OF THE PAWLET/WELLS TOWN LINE
AND EXTENDING NORTHERLY APPROXIMATELY 0.23 MILES

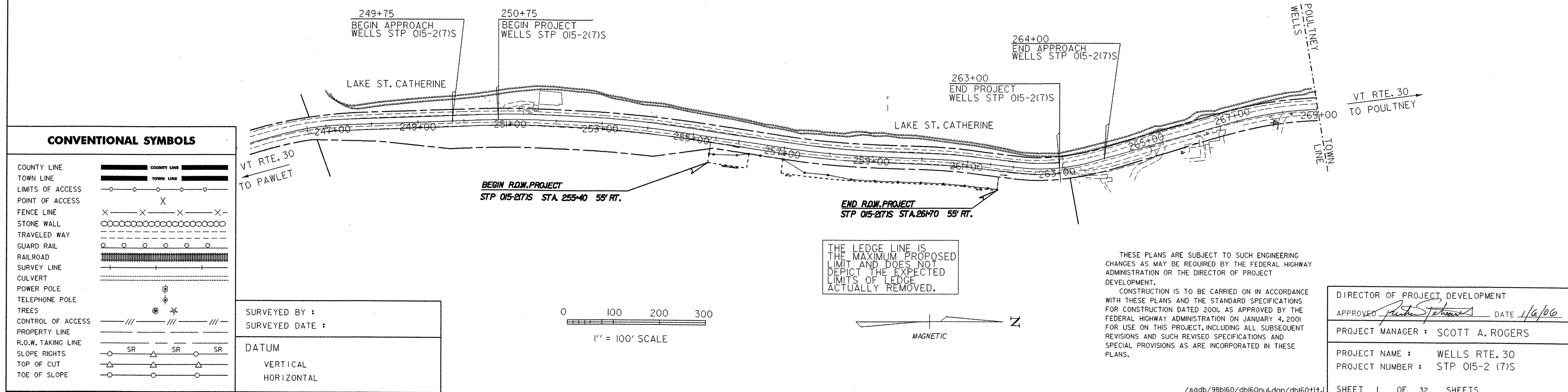
LENGTH OF ROADWAY 1225 FEET = 0.23 MILES
LENGTH OF PROJECT 1225 FEET = 0.23 MILES

WORK TO BE PERFORMED UNDER PROJECT INCLUDES SCALING
AND REMOVAL OF LEDGE AND CLEARING & GRUBBING.



| RECORD PLANS | |
|--|---------------------------------------|
| CONTRACTOR: | PIKE INDUSTRIES, INC. - BERLIN, VT |
| RESIDENT ENGINEER: | TIM POCKETTE |
| CONSTRUCTION BEGAN: | APRIL 5, 2006 |
| CONSTRUCTION COMPLETE: | JUNE 12, 2006 |
| RECORD PLANS BY: | TIM POCKETTE & J. GILMORE |
| I HEREBY CERTIFY THAT ALL THE CONSTRUCTION REQUIRED BY THIS SET OF DRAWINGS HAS BEEN ACCOMPLISHED AS INDICATED HEREIN. | |
| BY: | <i>Tim Pockette</i> RESIDENT ENGINEER |
| DATE: | March 14, 2007 |
| NOTE: Any further information concerning final quantities, amounts or other details relative to this project may be found at Central Files in the electronic archives. | |

| TRAFFIC DATA | |
|-------------------------|-----------|
| 2003 ADT | = 2100 |
| 2003 DHV | = 400 |
| 2003 ADTT | = 60 |
| 2003 %T | = 3 |
| 2003 %D | = 55 |
| 2023 ADT | = 2800 |
| 2023 DHV | = 490 |
| 2023 ADTT | = 80 |
| 2023 %T | = 2 |
| 2023 %D | = 55 |
| 20 YEAR FLEXIBLE ESAL'S | = 360,000 |
| 40 YEAR FLEXIBLE ESAL'S | = 894,000 |
| V | = 50 MPH |



THESE PLANS ARE SUBJECT TO SUCH ENGINEERING CHANGES AS MAY BE REQUIRED BY THE FEDERAL HIGHWAY ADMINISTRATION OR THE DIRECTOR OF PROJECT DEVELOPMENT.
CONSTRUCTION IS TO BE CARRIED ON IN ACCORDANCE WITH THESE PLANS AND THE STANDARD SPECIFICATIONS FOR CONSTRUCTION DATED 2001, AS APPROVED BY THE FEDERAL HIGHWAY ADMINISTRATION ON JANUARY 4, 2001 FOR USE ON THIS PROJECT, INCLUDING ALL SUBSEQUENT REVISIONS AND SUCH REVISED SPECIFICATIONS AND SPECIAL PROVISIONS AS ARE INCORPORATED IN THESE PLANS.

| | |
|-----------------------------------|------------------------------------|
| DIRECTOR OF PROJECT DEVELOPMENT | |
| APPROVED: | <i>Scott A. Rogers</i> DATE 1/6/06 |
| PROJECT MANAGER : SCOTT A. ROGERS | |
| PROJECT NAME : WELLS RTE. 30 | |
| PROJECT NUMBER : STP 015-2 (7)S | |
| SHEET 1 OF 32 SHEETS | |