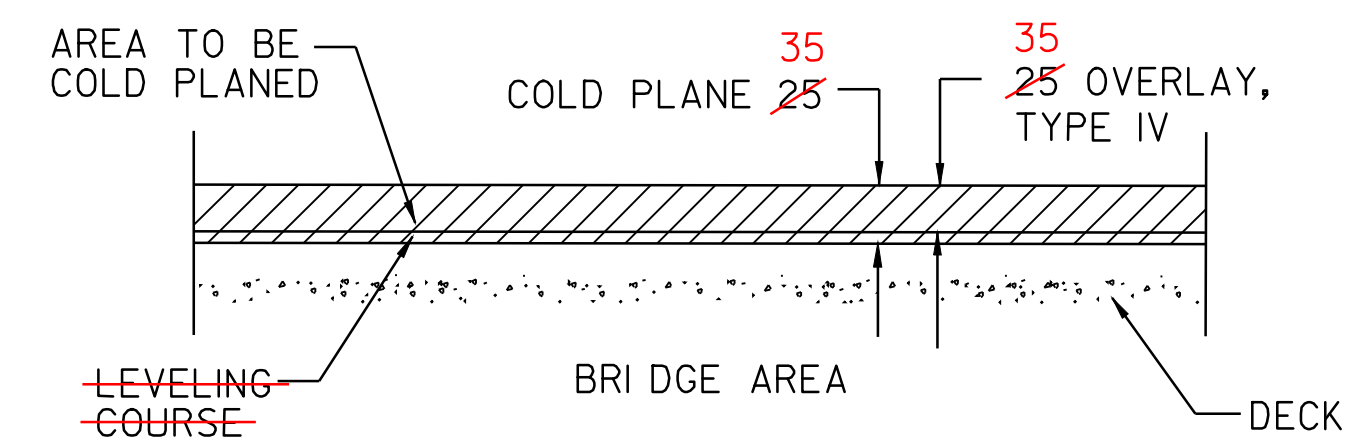


### APPROACH AREA DETAIL

LOCATION

HARDWICK  
 STA 2+699 - BEGIN OVERLAY  
 STA 3+751 - STOP OVERLAY  
 STA 3+784 - RESUME OVERLAY  
 GREENSBORO  
 STA 6+917 - END OVERLAY  
 6+933

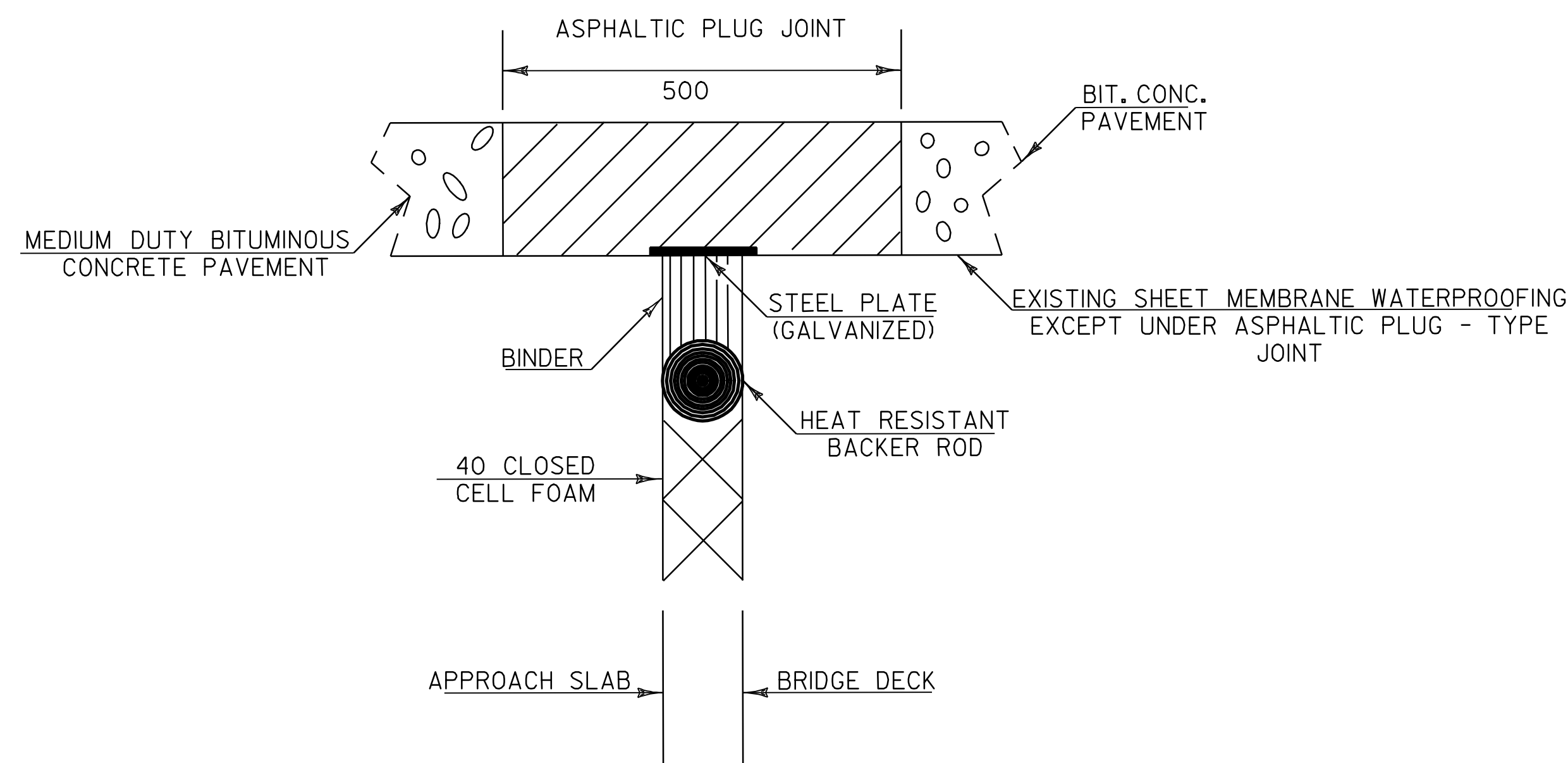


### BRIDGE COLD PLANE DETAIL

LOCATION

HARDWICK  
 BRIDGE #3: STA 5+326 TO STA 5+344

\* REFER TO SPECIAL PROVISIONS FOR BASIS OF PAYMENT

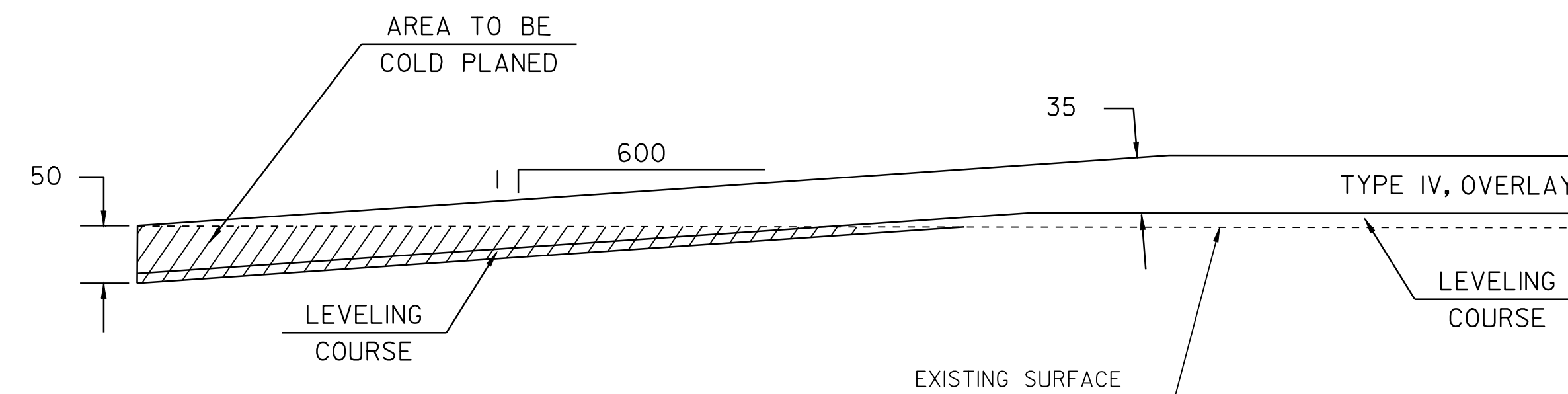


### ASPHALTIC PLUG-TYPE JOINT DETAIL

LOCATION

BRIDGE #3 (9.1M) @ STA 5+333.70 (MM 3.314) (@ EXPANSION JOINT)

NO ASPHALTIC PLUG JOINT INSTALLED AT BRIDGE #3.



### TRANSITION AREA DETAIL

LOCATION

HARDWICK  
 STA 5+326 - STOP OVERLAY, BEGIN COLD PLANE  
 STA 5+344 - END COLD PLANE, RESUME OVERLAY

NOTE: ALL DIMENSIONS IN METERS EXCEPT AS INDICATED

**PROJECT  
 TYPICAL  
 SHEET #2**

PROJECT: HARDWICK-GREENSBORO	PROJECT NO.: STP 2112(1)S
DESIGN FILE NAME: pava/98bl06/pbl06.dgn	PLOT DATE: 10-JUL-2006 13:45
IPARM FILE NAME: pbl06+y02.i	SURVEY DATE: 6/99
SURVEYED BY: CLD ENGINEERS, INC.	DRAWN BY: JPC
SQUAD LEADER: WRH	SHEET: 4 OF 43

DATUM	
VERTICAL	N/A
HORIZONTAL	N/A

NOT TO SCALE