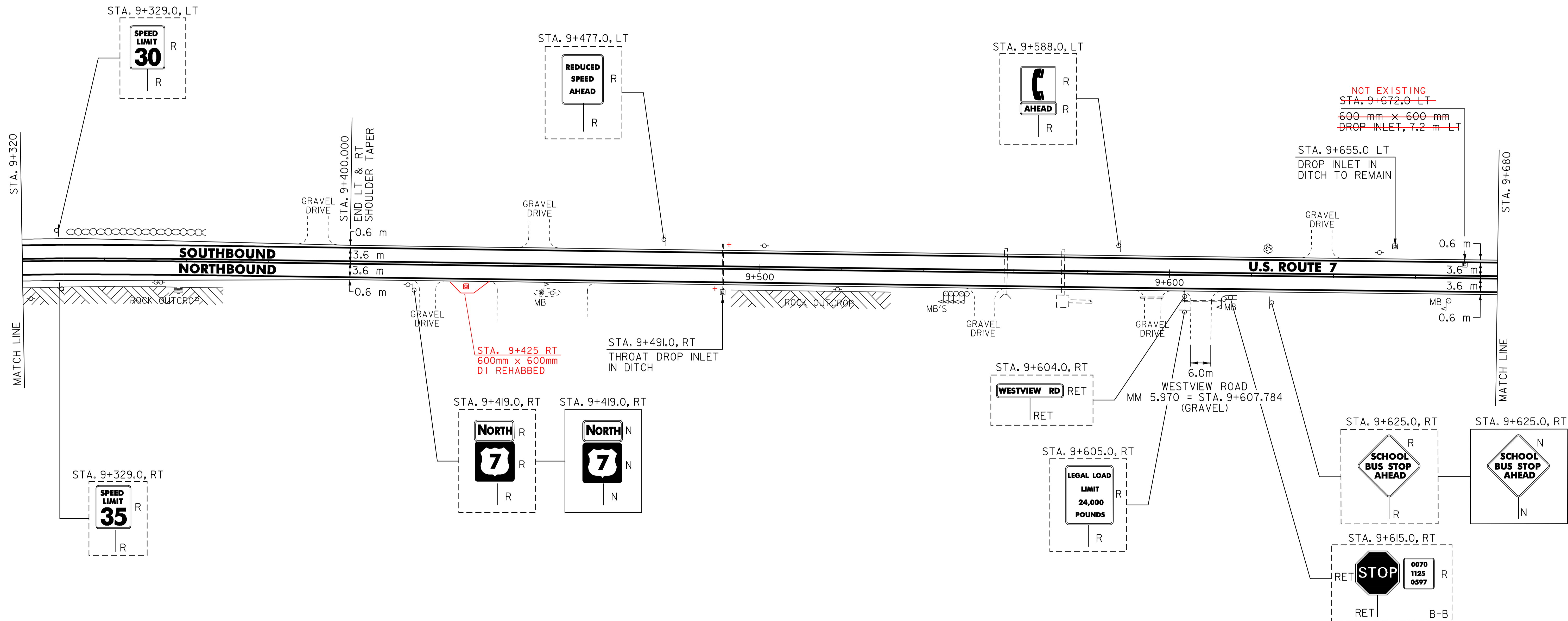


646.40 DURABLE 100 mm WHITE LINE (THERMOPLASTIC)
(ALL LINES WILL INCLUDE EDGE LINE BREAKS AND RADIUS FOR TOWN HIGHWAYS)
WALLINGFORD:
STA. 9+320.0 - STA. 9+680.0 LT & RT

646.60 TEMPORARY 100 mm WHITE LINE (PAINT)
(ALL LINES WILL INCLUDE EDGE LINE BREAKS AND RADIUS FOR TOWN HIGHWAYS)
WALLINGFORD:
STA. 9+320.0 - STA. 9+680.0 LT & RT

646.41 DURABLE 100 mm YELLOW LINE (THERMOPLASTIC)
(ALL LINES WILL INCLUDE C/L BREAKS FOR TOWN HIGHWAYS) S=SOLID, D=DASHED
WALLINGFORD:
STA. 9+320.0 - STA. 9+680.0 LT S C RT S

646.61 TEMPORARY 100 mm YELLOW LINE (PAINT)
(ALL LINES WILL INCLUDE C/L BREAKS FOR TOWN HIGHWAYS) S=SOLID, D=DASHED
WALLINGFORD:
STA. 9+320.0 - STA. 9+680.0 LT S C RT S



NOTE:

1. THE CONTRACTOR SHOULD BE AWARE THAT EXISTING BURIED UTILITIES (SUCH AS PHONE CABLE, FIBER OPTIC CABLE, SEWER LINES, ETC.) ARE LOCATED ADJACENT TO U.S. ROUTE 7 WITHIN THE PROJECT LIMITS. THE CONTRACTOR IS RESPONSIBLE FOR CONTACTING "DIG SAFE" AT 1-888-344-7233 TO DETERMINE THE EXACT LOCATIONS OF THESE UTILITIES PRIOR TO INSTALLING GUARDRAIL, CLEANING DITCHES OR PERFORMING ANY OTHER OPERATIONS THAT MAY DISTURB THE EXISTING SUBSURFACE CONDITIONS.

SIGN LEGEND
R= REMOVE
S= SALVAGE
N= NEW
RET= RETAIN
B-B= BACK TO BACK
EXISTING= -----
NEW= -----
⊙ = SIGN TO BE RETURNED TO THE TOWN OF WALLINGFORD

PAVING PROJECT LAYOUT # 31

SURVEYED BY	N/A	DATE	N/A
DRAWN BY	C.A.K.	DATE	8/05
SQUAD LEADER	D.E.G.		
DESIGN FILE NO.	/pave/98b098/pb098.dgn		
IPARM FILE	pb098i31.i	DATE PLOTTED	08-JUL-2007 15:00
PROJ. NAME	WALLINGFORD		
PROJ. NO.	NH 2108(I)S & STP EHO4(6)		
SHEET 51 OF 110	SHEETS		

DATUM	
VERTICAL	N/A
HORIZONTAL	N/A

604.412 REHABING DI, CB OR MH, CLASS I
WALLINGFORD:
STA. 9+491.0 RT
STA. 9+672.0 LT