

646.40 DURABLE 100 mm WHITE LINE (THERMOPLASTIC)  
(ALL LINES WILL INCLUDE EDGE LINE BREAKS AND RADIUS FOR TOWN HIGHWAYS)  
WALLINGFORD:  
STA. 8+920.0 - STA. 9+100.0 LT & RT

646.41 DURABLE 100 mm YELLOW LINE (THERMOPLASTIC)  
(ALL LINES WILL INCLUDE C/L BREAKS FOR TOWN HIGHWAYS) S=SOLID, D=DASHED  
WALLINGFORD:  
STA. 8+920.0 - STA. 9+100.0 LT & RT  
STA. 8+951.171 DOUBLE SOLID LT, T-58  
STA. 9+015.545 DOUBLE SOLID RT, T-10

646.42 DURABLE 200 mm WHITE LINE (THERMOPLASTIC)  
WALLINGFORD:  
STA. 8+951.171 LT, SHOULDER HATCHING (9.3 m)

646.46 DURABLE 600 mm STOP BAR (THERMOPLASTIC)  
WALLINGFORD:  
STA. 8+951.171 LT, T-58  
STA. 9+015.545 RT, T-10

646.50 DURABLE LETTER OR SYMBOL (THERMOPLASTIC)  
WALLINGFORD:  
STA. 8+951.171 LT, T-58, "S,T,O,P" (4 EA)  
STA. 9+015.545 RT, T-10, "S,T,O,P" (4 EA)

646.51 DURABLE CROSSWALK MARKINGS W/DIAGONALS (MOD.) (THERMOPLASTIC)  
WALLINGFORD:  
STA. 8+951.171 LT, T-58  
STA. 9+015.545 RT, T-10

646.66 TEMPORARY 600 mm STOP BAR (PAINT)  
WALLINGFORD:  
STA. 8+951.171 LT, T-58  
STA. 9+015.545 RT, T-10

~~646.70 TEMPORARY LETTER OR SYMBOL (PAINT)~~  
WALLINGFORD: NOT USED  
~~STA. 8+951.171 LT, T-58, "S,T,O,P" (8 EA)~~  
~~STA. 9+015.545 RT, T-10, "S,T,O,P" (8 EA)~~

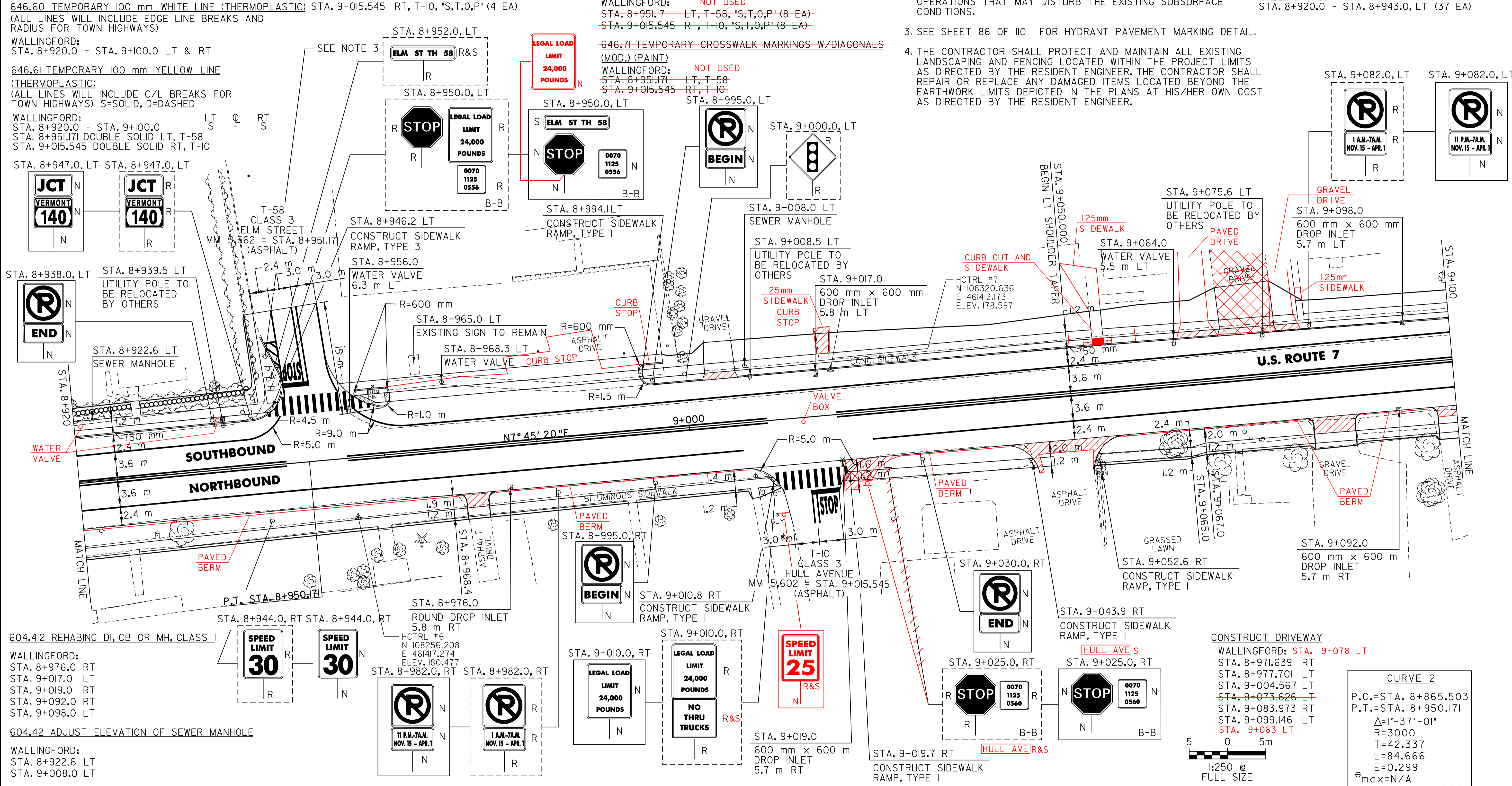
NOTES:

- PAVING LIMIT ON ALL TOWN HIGHWAYS SHALL BE MEASURED 8 m BACK FROM U.S. ROUTE 7 EDGE OF SHOULDER UNLESS DENOTED OTHERWISE ON THE PLANS OR AS DIRECTED BY THE RESIDENT ENGINEER.
- THE CONTRACTOR SHOULD BE AWARE THAT EXISTING BURIED UTILITIES (SUCH AS PHONE CABLE, FIBER OPTIC CABLE, SEWER LINES, ETC.) ARE LOCATED ADJACENT TO U.S. ROUTE 7 WITHIN THE PROJECT LIMITS. THE CONTRACTOR IS RESPONSIBLE FOR CONTACTING "DIG SAFE" AT 1-888-344-7233 TO DETERMINE THE EXACT LOCATIONS OF THESE UTILITIES PRIOR TO INSTALLING GUARDRAIL, CLEANING DITCHES OR PERFORMING ANY OTHER OPERATIONS THAT MAY DISTURB THE EXISTING SUBSURFACE CONDITIONS.
- SEE SHEET 86 OF 110 FOR HYDRANT PAVEMENT MARKING DETAIL.
- THE CONTRACTOR SHALL PROTECT AND MAINTAIN ALL EXISTING LANDSCAPING AND FENCING LOCATED WITHIN THE PROJECT LIMITS AS DIRECTED BY THE RESIDENT ENGINEER. THE CONTRACTOR SHALL REPAIR OR REPLACE ANY DAMAGED ITEMS LOCATED BEYOND THE EARTHWORK LIMITS DEPICTED IN THE PLANS AT HIS/HER OWN COST AS DIRECTED BY THE RESIDENT ENGINEER.

675.50 REMOVING SIGNS  
AS SHOWN - +6 18

675.60 ERECTING SALVAGED SIGNS  
AS SHOWN - + 4

656.35 DECIDUOUS SHRUB (LIGUSTRUM AMURENSE)  
WALLINGFORD:  
STA. 8+920.0 - STA. 8+943.0, LT (37 EA)



604.412 REHABING DI, CB OR MH, CLASS 1  
WALLINGFORD:  
STA. 8+976.0 RT  
STA. 9+017.0 LT  
STA. 8+919.0 RT  
STA. 9+092.0 RT  
STA. 9+098.0 LT

604.42 ADJUST ELEVATION OF SEWER MANHOLE  
WALLINGFORD:  
STA. 8+922.6 LT  
STA. 9+008.0 LT

629.20 ADJUST ELEVATION OF VALVE BOX  
WALLINGFORD:  
STA. 8+956.0 LT  
STA. 8+968.3 LT  
STA. 9+064.0 LT

616.28 CAST-IN-PLACE CONCRETE CURB, TYPE B  
WALLINGFORD: STA. 9+070 - STA. 9+076 LT (6.0m)

618.10 PORTLAND CEMENT CONCRETE SIDEWALK, 125 mm  
WALLINGFORD:  
STA. 8+920.0 - STA. 8+946.2 LT (47.6 m<sup>2</sup>)  
STA. 8+920.0 - STA. 9+010.8 RT (111.4 m<sup>2</sup>)  
STA. 8+944.1 - STA. 9+100.0 LT (134.1 m<sup>2</sup>)  
STA. 9+019.7 - STA. 9+043.9 RT (29.2 m<sup>2</sup>)  
STA. 9+052.6 - STA. 9+100.0 RT (57.3 m<sup>2</sup>)

618.11 PORTLAND CEMENT CONCRETE SIDEWALK, 200 mm  
WALLINGFORD:  
STA. 8+957.6 - STA. 8+994.1 LT (43.9 m<sup>2</sup>)

618.30 DETECTABLE WARNING SURFACE  
WALLINGFORD:  
STA. 8+946.2 LT (0.72 m<sup>2</sup>)  
STA. 8+957.6 LT (0.72 m<sup>2</sup>)  
STA. 8+961.0 LT (0.72 m<sup>2</sup>)  
STA. 8+994.1 LT (0.72 m<sup>2</sup>)  
STA. 9+010.8 LT (0.72 m<sup>2</sup>)  
STA. 9+019.7 LT (0.72 m<sup>2</sup>)  
STA. 9+043.9 RT (0.72 m<sup>2</sup>)  
STA. 9+052.6 RT (0.72 m<sup>2</sup>)

SIGN LEGEND  
R= REMOVE  
S= SALVAGE  
N= NEW  
RET= RETAIN  
B-B= BACK TO BACK  
EXISTING= -----  
NEW= -----

⊙ = SIGN TO BE RETURNED TO THE TOWN OF WALLINGFORD

CONSTRUCT DRIVEWAY  
WALLINGFORD: STA. 9+078 LT

STA. 8+971.639 RT  
STA. 8+977.701 LT  
STA. 9+004.567 LT  
~~STA. 9+073.626 LT~~  
STA. 9+083.973 RT  
STA. 9+099.146 LT  
STA. 9+063 LT

CONSTRUCT SIDEWALK RAMP, TYPE I  
STA. 9+043.9 RT

CONSTRUCT SIDEWALK RAMP, TYPE I  
STA. 9+025.0, RT

CONSTRUCT SIDEWALK RAMP, TYPE I  
STA. 9+025.0, RT

CURVE 2  
P.C.=STA. 8+865.503  
P.T.=STA. 8+950.171  
ΔI=°-37'-01"  
R=3000  
T=42.337  
L=84.666  
E=0.299  
e<sub>max</sub>=N/A

SCALE: 1:250 @ FULL SIZE

DATUM  
VERTICAL NAVD 88  
HORIZONTAL NAD 83 (1996)

9+080.5

618.10 PORTLAND CEMENT CONCRETE SIDEWALK, 125 mm  
WALLINGFORD:  
STA. 8+920.0 - STA. 8+946.2 LT (47.6 m<sup>2</sup>)  
STA. 8+920.0 - STA. 9+010.8 RT (111.4 m<sup>2</sup>)  
STA. 8+944.1 - STA. 9+100.0 LT (134.1 m<sup>2</sup>)  
STA. 9+019.7 - STA. 9+043.9 RT (29.2 m<sup>2</sup>)  
STA. 9+052.6 - STA. 9+100.0 RT (57.3 m<sup>2</sup>)

618.11 PORTLAND CEMENT CONCRETE SIDEWALK, 200 mm  
WALLINGFORD:  
STA. 8+957.6 - STA. 8+994.1 LT (43.9 m<sup>2</sup>)

618.30 DETECTABLE WARNING SURFACE  
WALLINGFORD:  
STA. 8+946.2 LT (0.72 m<sup>2</sup>)  
STA. 8+957.6 LT (0.72 m<sup>2</sup>)  
STA. 8+961.0 LT (0.72 m<sup>2</sup>)  
STA. 8+994.1 LT (0.72 m<sup>2</sup>)  
STA. 9+010.8 LT (0.72 m<sup>2</sup>)  
STA. 9+019.7 LT (0.72 m<sup>2</sup>)  
STA. 9+043.9 RT (0.72 m<sup>2</sup>)  
STA. 9+052.6 RT (0.72 m<sup>2</sup>)

**PAVING PROJECT LAYOUT # 28**

SURVEYED BY L.R.S.C. DATE 10/10/04  
DRAWN BY C.A.K. DATE 8/05  
SQUAD LEADER D.E.G.  
DESIGN FILE NO. /pave/98b098/pb098.dgn  
IPARM pb098128.1 DATE PLOTTED 08-JUL-2007 15:00  
PROJ. NAME WALLINGFORD  
PROJ. NO. NH\_210811S\_&\_SIP\_EHQ4(6)  
SHEET 48 OF 110 SHEETS