

646.40 DURABLE 100 mm WHITE LINE (THERMOPLASTIC)
 (ALL LINES WILL INCLUDE EDGE LINE BREAKS AND RADIUS FOR TOWN HIGHWAYS)
 WALLINGFORD:
 STA. 8+380.0 - STA. 8+560.0 LT & RT

646.41 DURABLE 100 mm YELLOW LINE (THERMOPLASTIC)
 (ALL LINES WILL INCLUDE C/L BREAKS FOR TOWN HIGHWAYS) S=SOLID, D=DASHED
 WALLINGFORD:
 STA. 8+380.0 - STA. 8+560.0 LT S C RT S
 STA. 8+479.634 DOUBLE SOLID RT, T-I7

646.42 DURABLE 200 mm WHITE LINE (THERMOPLASTIC)
 WALLINGFORD:
 STA. 8+488.2 - STA. 8+491.8 RT, SHOULDER HATCHING (16.8 m)

646.46 DURABLE 600 mm STOP BAR (THERMOPLASTIC)
 WALLINGFORD:
 STA. 8+479.634 RT, T-I7

646.50 DURABLE LETTER OR SYMBOL (THERMOPLASTIC)
 WALLINGFORD:
 STA. 8+479.634 RT, T-I7, 'S,T,O,P' (4 EA)

646.51 DURABLE CROSSWALK MARKINGS W/DIAGONALS (MOD.) (THERMOPLASTIC)
 WALLINGFORD:
 STA. 8+479.634 RT, T-I7

646.60 TEMPORARY 100 mm WHITE LINE (PAINT)
 (ALL LINES WILL INCLUDE EDGE LINE BREAKS AND RADIUS FOR TOWN HIGHWAYS)
 WALLINGFORD:
 STA. 8+380.0 - STA. 8+560.0 LT & RT

646.61 TEMPORARY 100 mm YELLOW LINE (PAINT)
 (ALL LINES WILL INCLUDE C/L BREAKS FOR TOWN HIGHWAYS) S=SOLID, D=DASHED
 WALLINGFORD:
 STA. 8+380.0 - STA. 8+560.0 LT S C RT S
 STA. 8+479.634 DOUBLE SOLID RT, T-I7

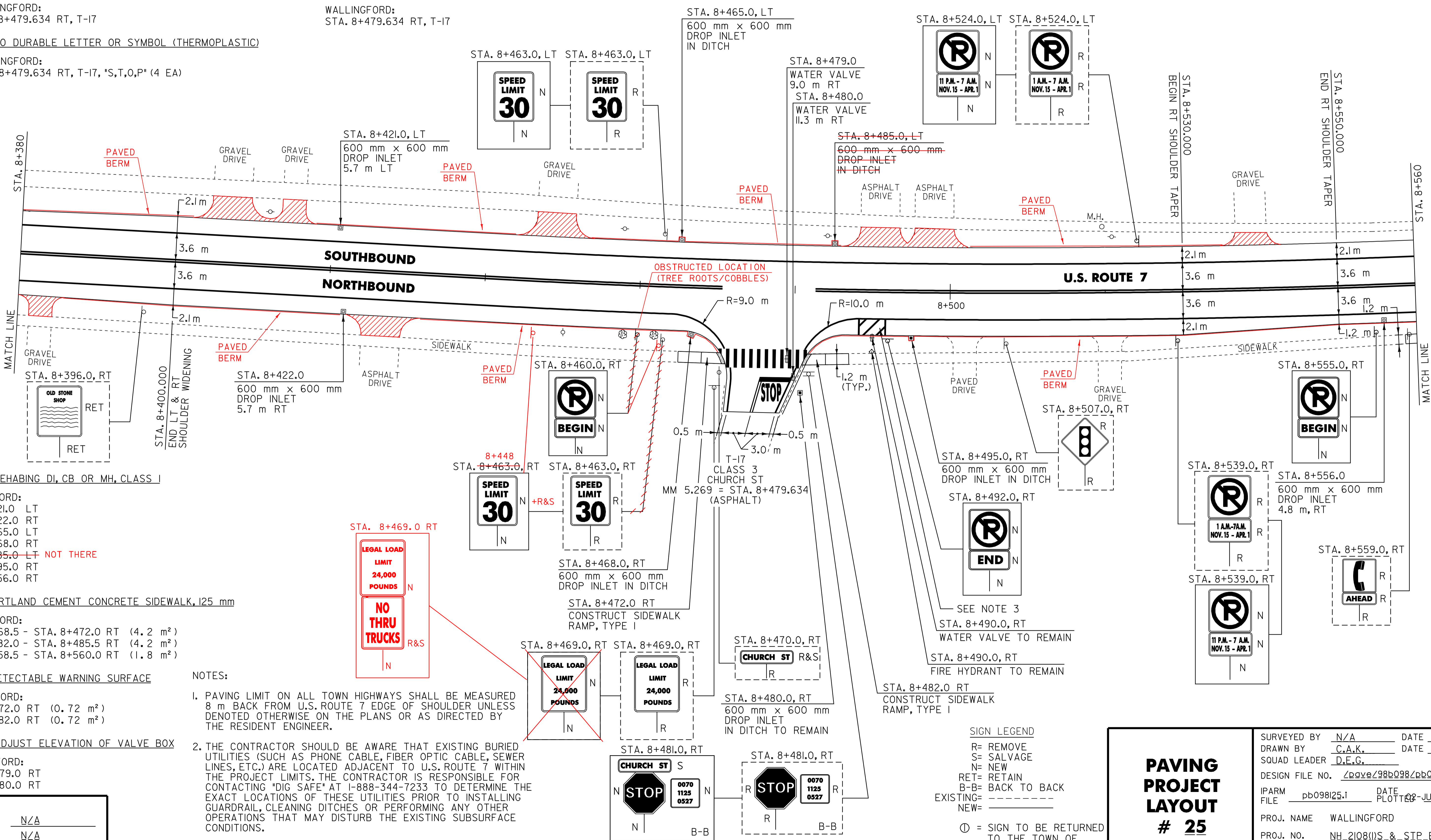
646.66 TEMPORARY 600 mm STOP BAR (PAINT)
 WALLINGFORD:
 STA. 8+479.634 RT, T-I7

646.70 TEMPORARY LETTER OR SYMBOL (PAINT)
 WALLINGFORD:
 STA. 8+479.634 RT, T-I7, 'S,T,O,P' (8 EA)

646.71 TEMPORARY CROSSWALK MARKINGS W/DIAGONALS (MOD.) (PAINT)
 WALLINGFORD:
 STA. 8+479.634 RT, T-I7

675.50 REMOVING SIGNS
 AS SHOWN - 13 17

675.60 ERECTING SALVAGED SIGNS
 AS SHOWN - + 5



604.112 REHABING DI, CB OR MH, CLASS 1
 WALLINGFORD:
 STA. 8+421.0 LT
 STA. 8+422.0 RT
 STA. 8+465.0 LT
 STA. 8+468.0 RT
 STA. 8+485.0 LT NOT THERE
 STA. 8+495.0 RT
 STA. 8+556.0 RT

618.10 PORTLAND CEMENT CONCRETE SIDEWALK, 125 mm
 WALLINGFORD:
 STA. 8+468.5 - STA. 8+472.0 RT (4.2 m²)
 STA. 8+482.0 - STA. 8+485.5 RT (4.2 m²)
 STA. 8+558.5 - STA. 8+560.0 RT (1.8 m²)

618.30 DETECTABLE WARNING SURFACE
 WALLINGFORD:
 STA. 8+472.0 RT (0.72 m²)
 STA. 8+482.0 RT (0.72 m²)

629.20 ADJUST ELEVATION OF VALVE BOX
 WALLINGFORD:
 STA. 8+479.0 RT
 STA. 8+480.0 RT

DATUM

VERTICAL	N/A
HORIZONTAL	N/A

- NOTES:
- PAVING LIMIT ON ALL TOWN HIGHWAYS SHALL BE MEASURED 8 m BACK FROM U.S. ROUTE 7 EDGE OF SHOULDER UNLESS DENOTED OTHERWISE ON THE PLANS OR AS DIRECTED BY THE RESIDENT ENGINEER.
 - THE CONTRACTOR SHOULD BE AWARE THAT EXISTING BURIED UTILITIES (SUCH AS PHONE CABLE, FIBER OPTIC CABLE, SEWER LINES, ETC.) ARE LOCATED ADJACENT TO U.S. ROUTE 7 WITHIN THE PROJECT LIMITS. THE CONTRACTOR IS RESPONSIBLE FOR CONTACTING "DIG SAFE" AT 1-888-344-7233 TO DETERMINE THE EXACT LOCATIONS OF THESE UTILITIES PRIOR TO INSTALLING GUARDRAIL, CLEANING DITCHES OR PERFORMING ANY OTHER OPERATIONS THAT MAY DISTURB THE EXISTING SUBSURFACE CONDITIONS.
 - SEE SHEET 86 OF 110 FOR HYDRANT PAVEMENT MARKING DETAIL.

- SIGN LEGEND
- R= REMOVE
 - S= SALVAGE
 - N= NEW
 - RET= RETAIN
 - B-B= BACK TO BACK
 - EXISTING=
 - NEW=
 - ⊙ = SIGN TO BE RETURNED TO THE TOWN OF WALLINGFORD

PAVING PROJECT LAYOUT # 25

SURVEYED BY	N/A	DATE	N/A
DRAWN BY	C.A.K.	DATE	8/05
SQUAD LEADER	D.E.G.		
DESIGN FILE NO.	pave\98b098\pb098.dgn		
IPARM FILE	pb098\25.1	DATE PLOTTED	02-JUL-2007 15
PROJ. NAME	WALLINGFORD		
PROJ. NO.	NH_210811S_&_SIP_EH04(6)		
SHEET	45	OF	110
SHEETS			