

646.40 DURABLE 100 mm WHITE LINE (THERMOPLASTIC)  
 (ALL LINES WILL INCLUDE EDGE LINE BREAKS AND RADIUS FOR TOWN HIGHWAYS)

WALLINGFORD:  
 STA. 8+200.0 - STA. 8+380.0 LT & RT

646.41 DURABLE 100 mm YELLOW LINE (THERMOPLASTIC)  
 (ALL LINES WILL INCLUDE C/L BREAKS FOR TOWN HIGHWAYS) S=SOLID, D=DASHED

WALLINGFORD:  
 STA. 8+200.0 - STA. 8+380.0 LT S C RT S

646.42 DURABLE 200 mm WHITE LINE (THERMOPLASTIC)

WALLINGFORD:  
 STA. 8+329.2 - STA. 8+332.8 RT, SHOULDER HATCHING (12.9 m)

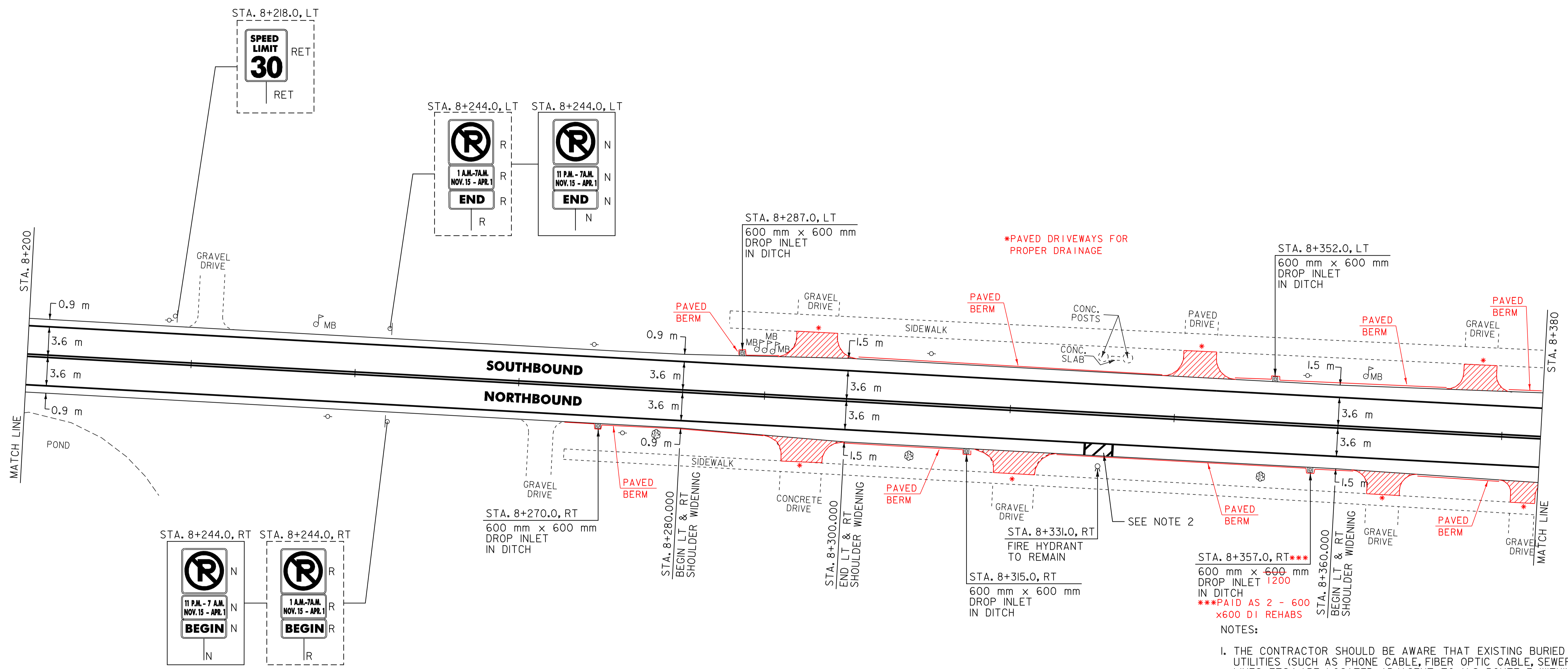
646.60 TEMPORARY 100 mm WHITE LINE (PAINT)  
 (ALL LINES WILL INCLUDE EDGE LINE BREAKS AND RADIUS FOR TOWN HIGHWAYS)

WALLINGFORD:  
 STA. 8+200.0 - STA. 8+380.0 LT & RT

646.61 TEMPORARY 100 mm YELLOW LINE (PAINT)  
 (ALL LINES WILL INCLUDE C/L BREAKS FOR TOWN HIGHWAYS) S=SOLID, D=DASHED

WALLINGFORD:  
 STA. 8+200.0 - STA. 8+380.0 LT S C RT S

675.50 REMOVING SIGNS  
 AS SHOWN - 6



604.412 REHABING DI, CB OR MH, CLASS I  
 WALLINGFORD:  
 STA. 8+270.0 RT  
 STA. 8+287.0 LT  
 STA. 8+315.0 RT  
 STA. 8+352.0 LT \*\*  
 STA. 8+357.0 RT \*\*

\*\*2 EACH AT EXIST BOX CULVERT

**SIGN LEGEND**  
 R= REMOVE  
 S= SALVAGE  
 N= NEW  
 RET= RETAIN  
 B-B= BACK TO BACK  
 EXISTING= \_\_\_\_\_  
 NEW= \_\_\_\_\_  
 ⊙ = SIGN TO BE RETURNED TO THE TOWN OF WALLINGFORD

**NOTES:**  
 1. THE CONTRACTOR SHOULD BE AWARE THAT EXISTING BURIED UTILITIES (SUCH AS PHONE CABLE, FIBER OPTIC CABLE, SEWER LINES, ETC.) ARE LOCATED ADJACENT TO U.S. ROUTE 7 WITHIN THE PROJECT LIMITS. THE CONTRACTOR IS RESPONSIBLE FOR CONTACTING "DIG SAFE" AT 1-888-344-7233 TO DETERMINE THE EXACT LOCATIONS OF THESE UTILITIES PRIOR TO INSTALLING GUARDRAIL, CLEANING DITCHES OR PERFORMING ANY OTHER OPERATIONS THAT MAY DISTURB THE EXISTING SUBSURFACE CONDITIONS.  
 2. SEE SHEET 86 OF 110 FOR HYDRANT PAVEMENT MARKING DETAIL.

<b>PAVING PROJECT LAYOUT # 24</b>	SURVEYED BY	N/A	DATE	N/A
	DRAWN BY	C.A.K.	DATE	8/05
	SQUAD LEADER	D.E.G.		
	DESIGN FILE NO.	pave\98b098\pb098.dgn		
	IPARM FILE	pb098i24.i	DATE PLOTTED	02-JUL-2007 15
PROJ. NAME	WALLINGFORD			
PROJ. NO.	NH_2108(1)S_&_SIP_EH04(6)			
SHEET	44	OF	110	SHEETS