

646.40 DURABLE 100 mm WHITE LINE (THERMOPLASTIC)
 (ALL LINES WILL INCLUDE EDGE LINE BREAKS AND RADIUS FOR TOWN HIGHWAYS)

WALLINGFORD:
 STA. I+080.0 - STA. I+460.0 LT & RT

646.41 DURABLE 100 mm YELLOW LINE (THERMOPLASTIC)
 (ALL LINES WILL INCLUDE C/L BREAKS FOR TOWN HIGHWAYS) S=SOLID, D=DASHED

WALLINGFORD:
 STA. I+080.0 - STA. I+460.0 LT C RT S - S

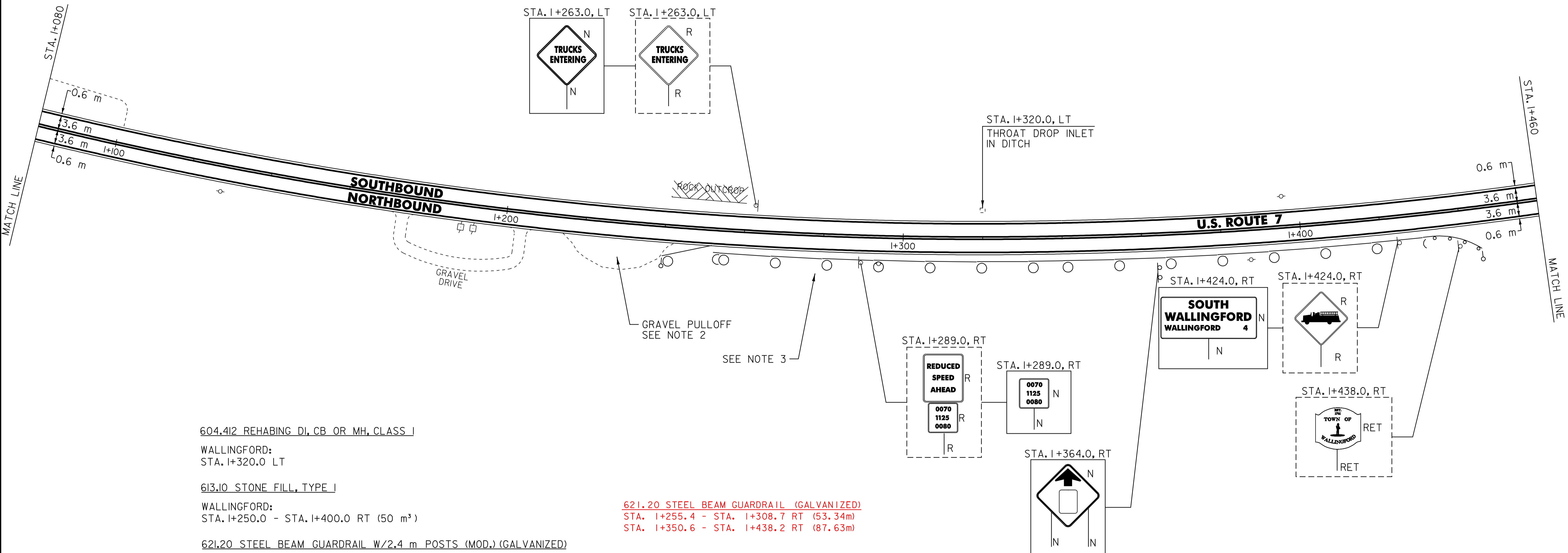
646.60 TEMPORARY 100 mm WHITE LINE (PAINT)
 (ALL LINES WILL INCLUDE EDGE LINE BREAKS AND RADIUS FOR TOWN HIGHWAYS)

WALLINGFORD:
 STA. I+080.0 - STA. I+460.0 LT & RT

646.61 TEMPORARY 100 mm YELLOW LINE (PAINT)
 (ALL LINES WILL INCLUDE C/L BREAKS FOR TOWN HIGHWAYS) S=SOLID, D=DASHED

WALLINGFORD:
 STA. I+080.0 - STA. I+460.0 LT C RT S - S

675.50 REMOVING SIGNS
 AS SHOWN - 4



604.412 REHABING DI, CB OR MH, CLASS I
 WALLINGFORD:
 STA. I+320.0 LT

613.10 STONE FILL, TYPE I
 WALLINGFORD:
 STA. I+250.0 - STA. I+400.0 RT (50 m³)

621.20 STEEL BEAM GUARDRAIL W/2.4 m POSTS (MOD.) (GALVANIZED)
 WALLINGFORD:
 STA. I+255.4 - STA. I+434.0 RT (178.6 m)
 STA. I+308.7 - STA. I+350.6 RT (41.9 m)

621.505 MANUFACTURED TERMINAL SECTION (FLARED)
 WALLINGFORD:
 STA. I+244.0 - STA. I+255.4 RT
 STA. I+434.0 - STA. I+445.4 RT
 STA. I+438.2 - STA. I+449.5 RT

621.80 REMOVAL AND DISPOSAL OF GUARDRAIL
 WALLINGFORD:
 STA. I+244.0 - STA. I+442.0 RT (198.0 m)

676.10 DELINEATORS WITH STEEL POSTS
 WALLINGFORD:
 TYPE I WHITE
 STA. I+244.0 RT
 STA. I+445.4 RT

621.20 STEEL BEAM GUARDRAIL (GALVANIZED)
 STA. I+255.4 - STA. I+308.7 RT (53.34m)
 STA. I+350.6 - STA. I+438.2 RT (87.63m)

NOTES:

1. THE CONTRACTOR SHOULD BE AWARE THAT EXISTING BURIED UTILITIES (SUCH AS PHONE CABLE, FIBER OPTIC CABLE, SEWER LINES, ETC.) ARE LOCATED ADJACENT TO U.S. ROUTE 7 WITHIN THE PROJECT LIMITS. THE CONTRACTOR IS RESPONSIBLE FOR CONTACTING "DIG SAFE" AT 1-888-344-7233 TO DETERMINE THE EXACT LOCATIONS OF THESE UTILITIES PRIOR TO INSTALLING GUARDRAIL, CLEANING DITCHES OR PERFORMING ANY OTHER OPERATIONS THAT MAY DISTURB THE EXISTING SUBSURFACE CONDITIONS.
2. PLACE 100 mm OF COMPACTED COLD PLANE GRINDINGS ON THE EXISTING GRAVEL PULLOFF AND PROVIDE A 45 mm TYPE III S 1.5 m WIDE APRON. ANY REQUIRED EXCAVATION SHALL BE PERFORMED AS DIRECTED BY THE RESIDENT ENGINEER AND PAID UNDER ITEM 608.25.
3. STONE FILL TYPE I SHALL BE PLACED ALONG THE EXISTING SIDE SLOPE BETWEEN STA. I+250.0 - STA. I+400.0 AS DIRECTED BY THE RESIDENT ENGINEER.

SIGN LEGEND
 R= REMOVE
 S= SALVAGE
 N= NEW
 RET= RETAIN
 B-B= BACK TO BACK
 EXISTING= -----
 NEW= _____
 ⊕ = SIGN TO BE RETURNED TO THE TOWN OF WALLINGFORD

PAVING PROJECT LAYOUT # 4

SURVEYED BY	N/A	DATE	N/A
DRAWN BY	C.A.K.	DATE	8/05
SQUAD LEADER	D.E.G.		
DESIGN FILE NO.	/pave/98b098/pb098.dgn		
IPARM FILE	pb098i04.i	DATE PLOTTED	08-JUL-2007 15:45
PROJ. NAME	WALLINGFORD		
PROJ. NO.	NH_2108(1)S_&_SIP_EH04(6)		
SHEET	24	OF	110
SHEETS	-----		

DATUM	
VERTICAL	N/A
HORIZONTAL	N/A