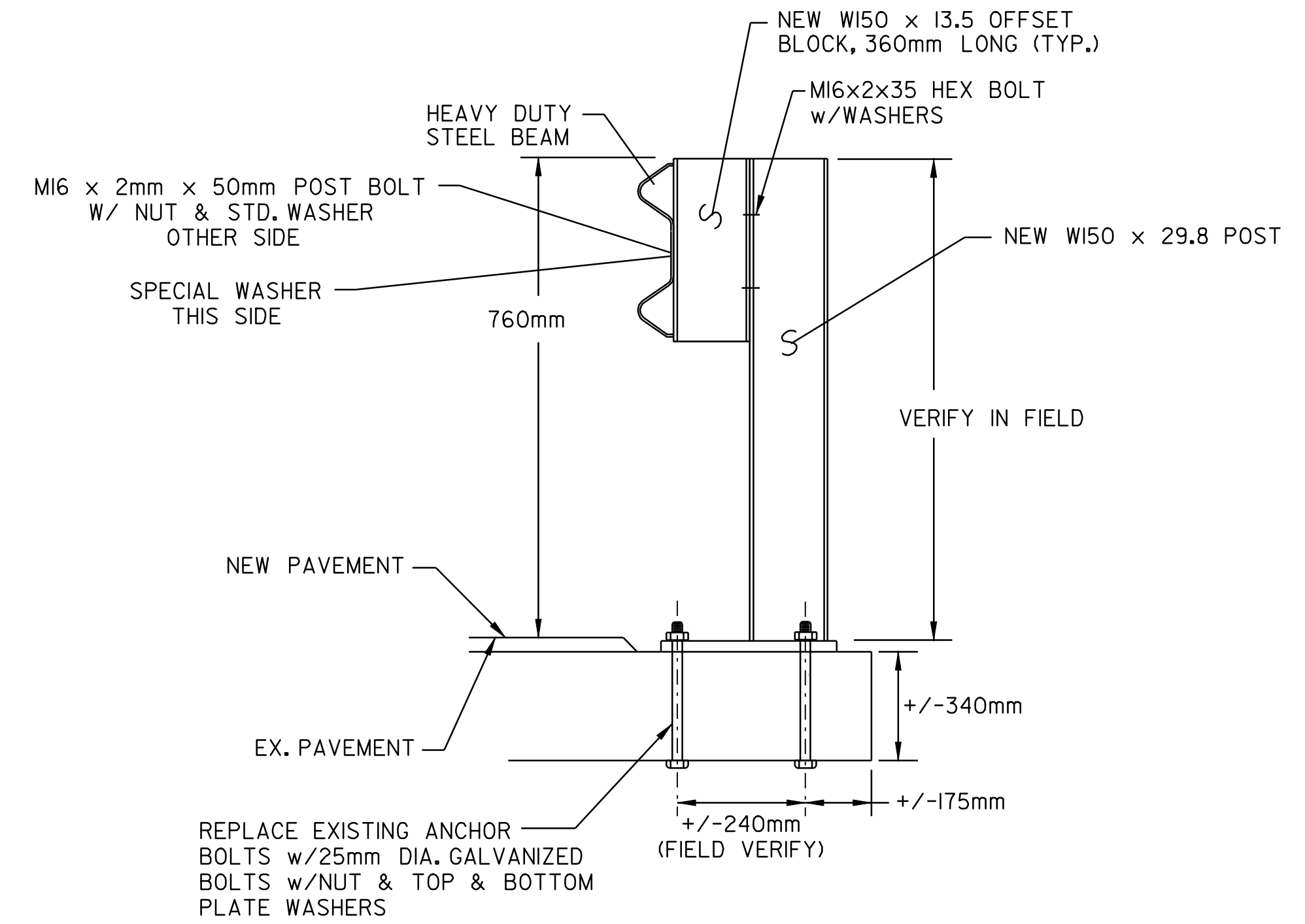
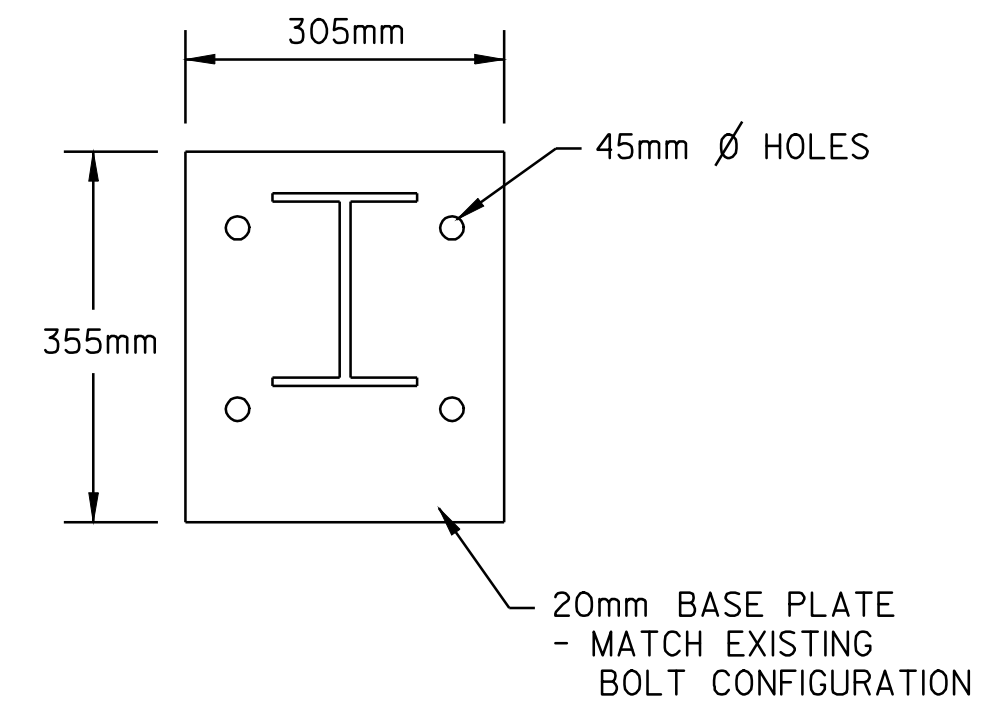
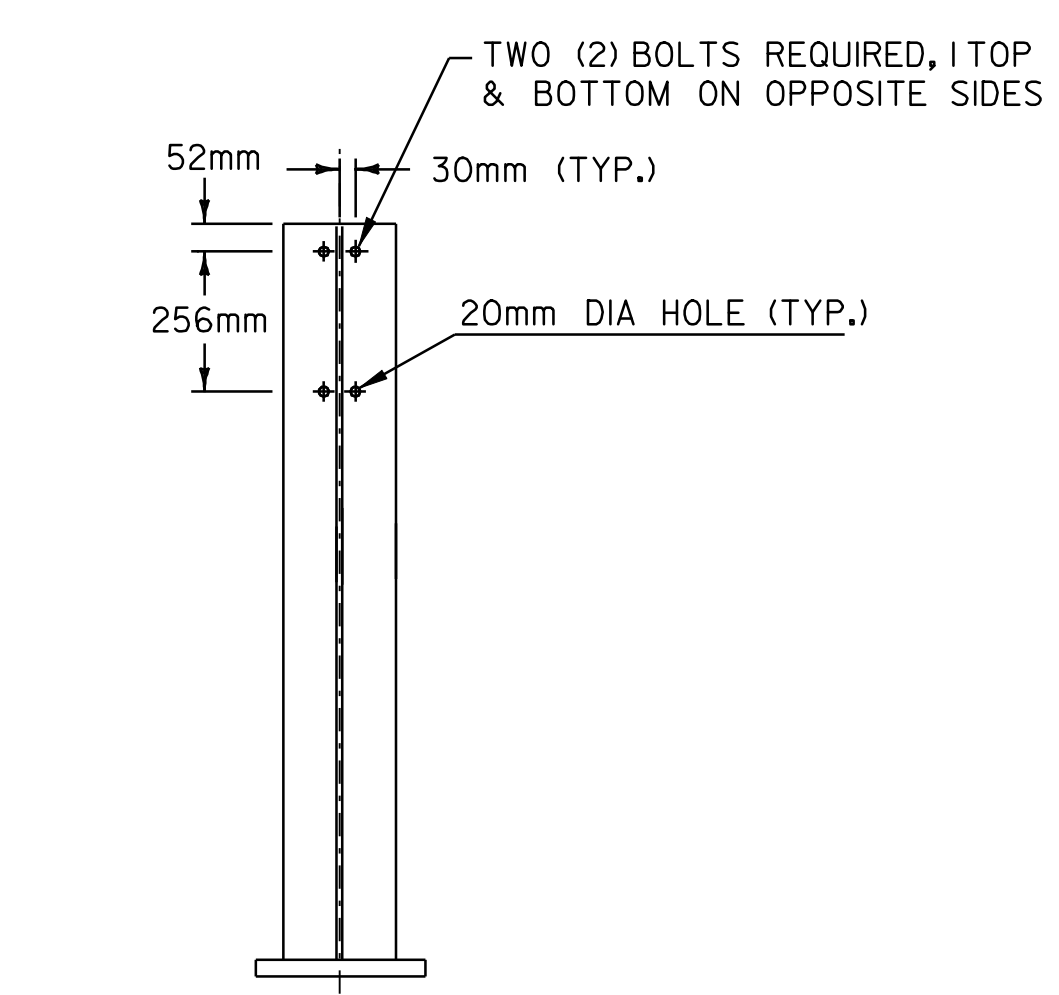
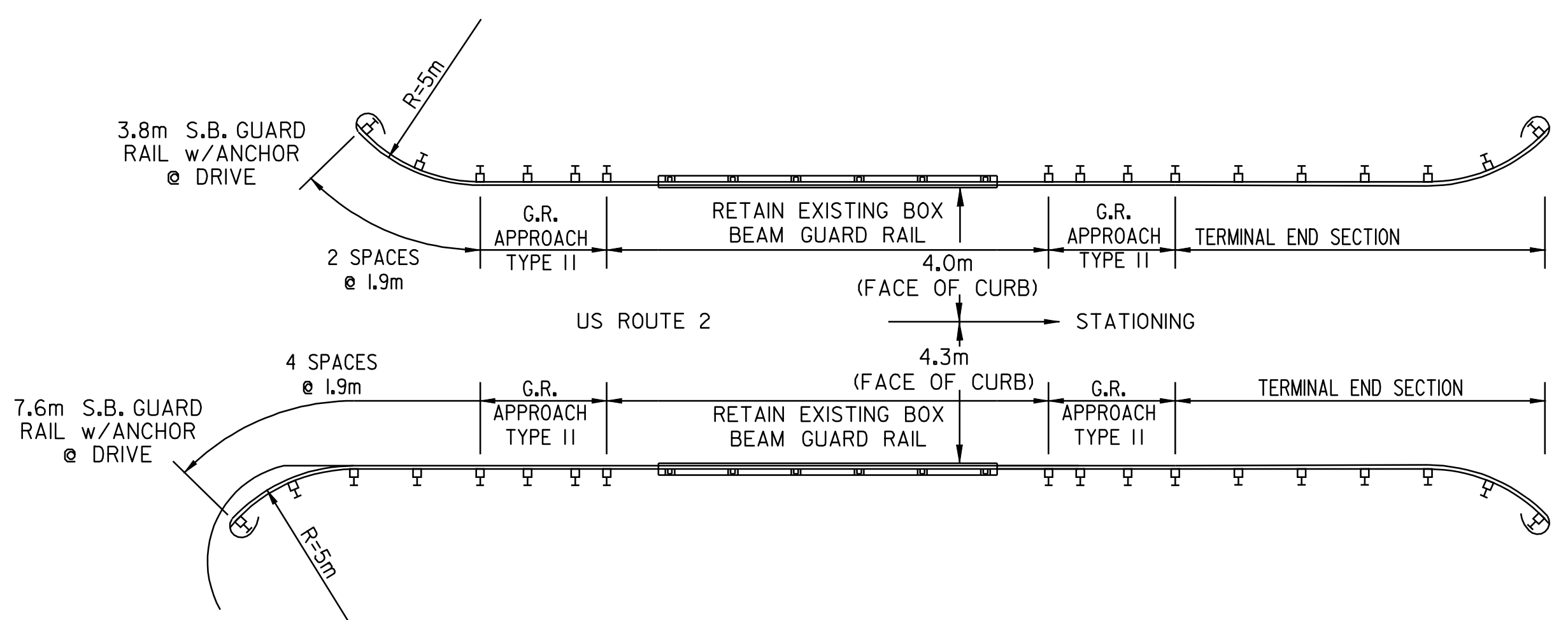


MARSHFIELD - BRIDGE #80
STA 10+365 = MM 6.441



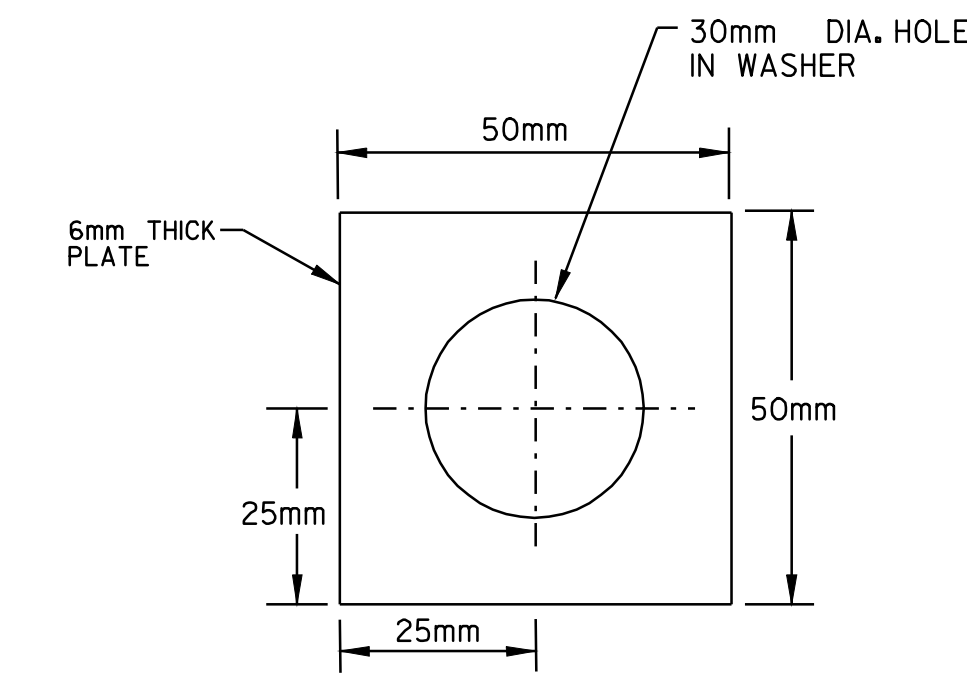
POST DETAILS

- NOTES:
1. BOLTS, NUTS & WASHERS SHALL BE GALVANIZED AND CONFORM TO SECTION 714.05, EXCEPT THAT POST BOLTS SHALL CONFORM TO STANDARD G-IM REQUIREMENTS AND BE CORROSION RESISTANT.
 2. POSTS, PLATE AND SPECIAL WASHER SHALL BE AASHTO M270/M270 GRADE 345W STEEL

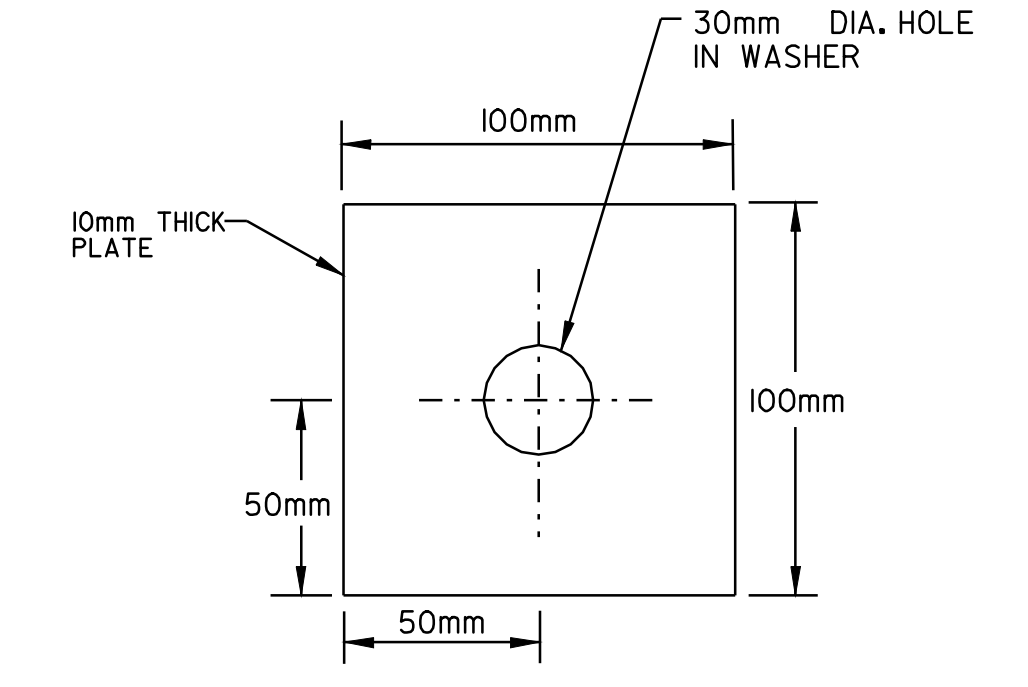


MARSHFIELD - BRIDGE #81
STA 11+018 = MM 6.85

NOTE: SEE GUARD RAIL TRANSITION DETAILS, SHEETS 55 & 56.



WASHER DETAIL (TOP)



WASHER DETAIL (BOTTOM)



<p>BRIDGE DETAIL SHEET #5</p>	DESIGNED BY <u>BCE/PJM</u> DATE <u>7-02</u>
	DRAWN BY <u>C.E.A., INC.</u> DATE <u>7-02</u>
	DESIGN FILE NO. <u>/pave/98b090/pb090.dgn</u>
	PRF FILE <u>pb090b05.1</u> DATE <u>PLOTTED 09-MAY-2008</u>
	PROJ. NAME: MARSHFIELD - CABOT
PROJ. NO.: NH 2104(1)S	
SHEET 56 OF 60 SHEETS	