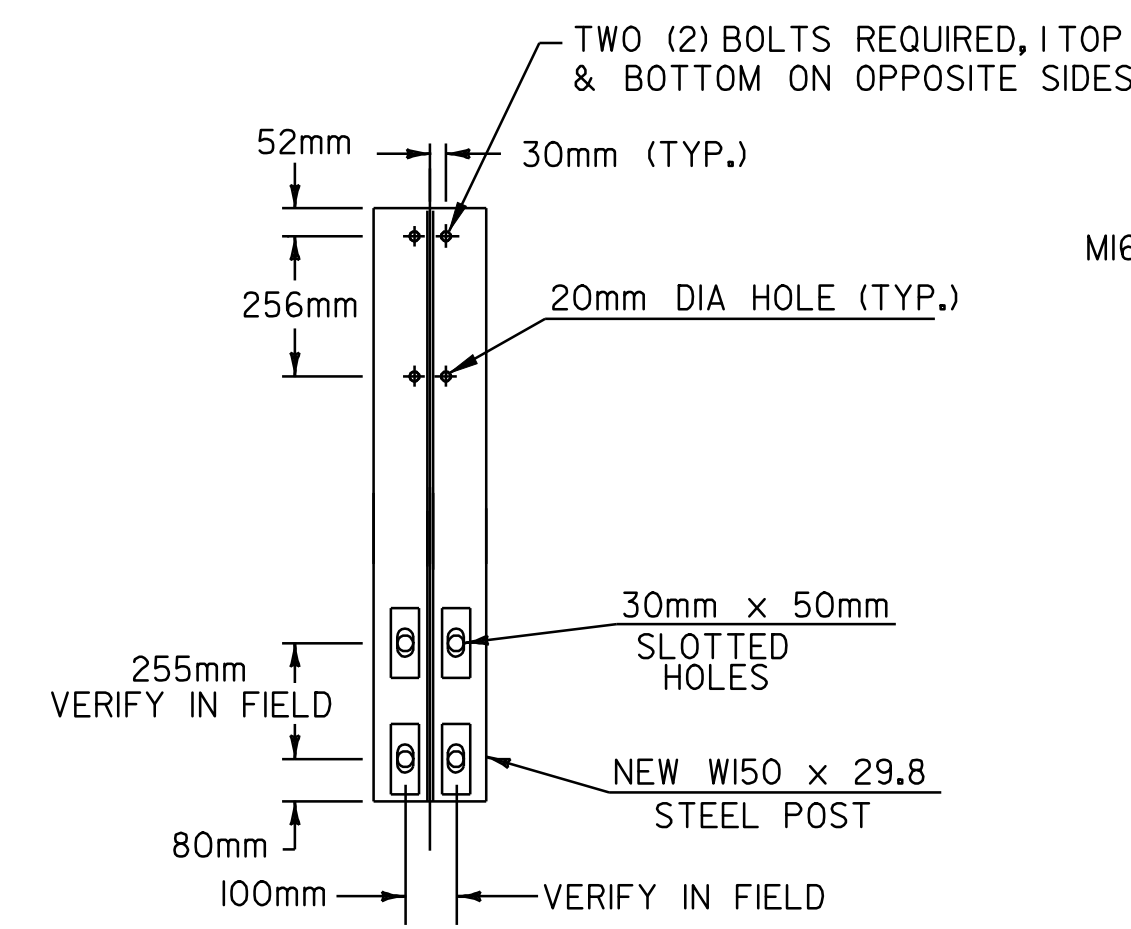
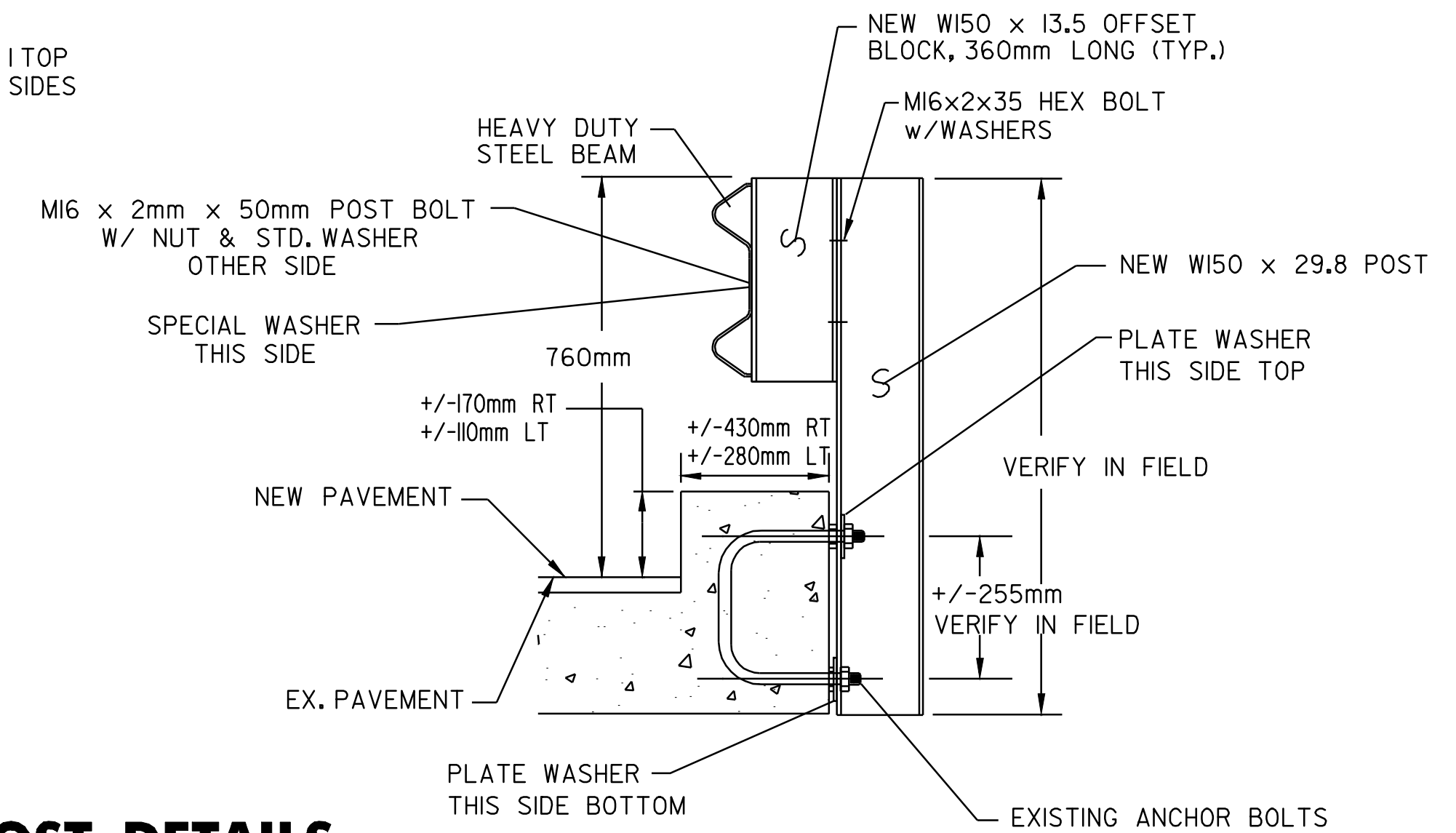


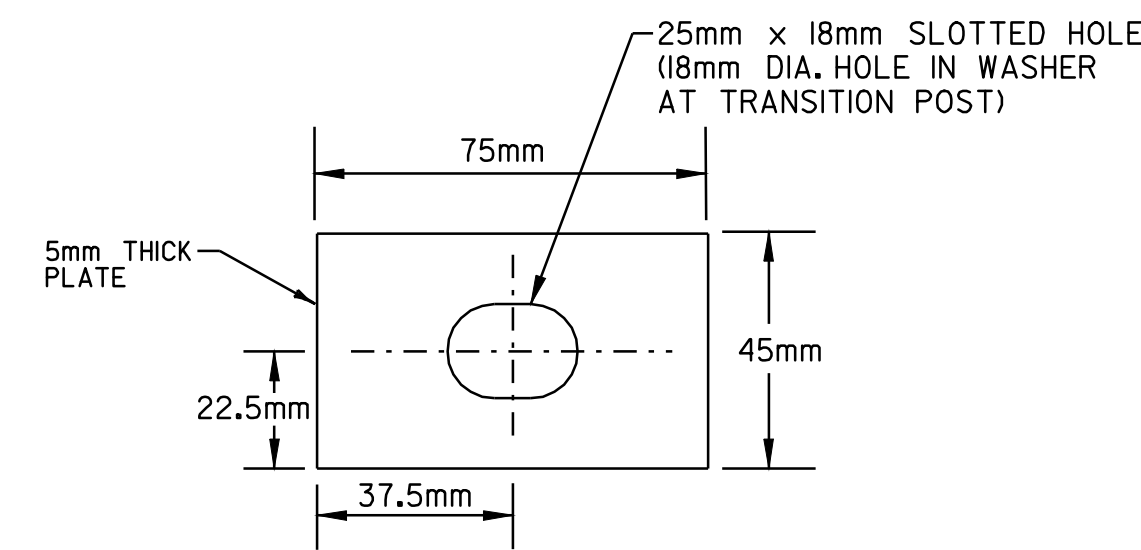
MARSHFIELD - BRIDGE #76
STA 0+690.1 = MM 0.429



POST DETAILS



- NOTES:
- BOLTS, NUTS & WASHERS SHALL BE GALVANIZED AND CONFORM TO SECTION 714.05, EXCEPT THAT POST BOLTS SHALL CONFORM TO STANDARD G-1M REQUIREMENTS AND BE CORROSION RESISTANT.
 - POSTS, PLATE AND SPECIAL WASHER SHALL BE AASHTO M270/M270 GRADE 345W STEEL



SPECIAL WASHER DETAIL

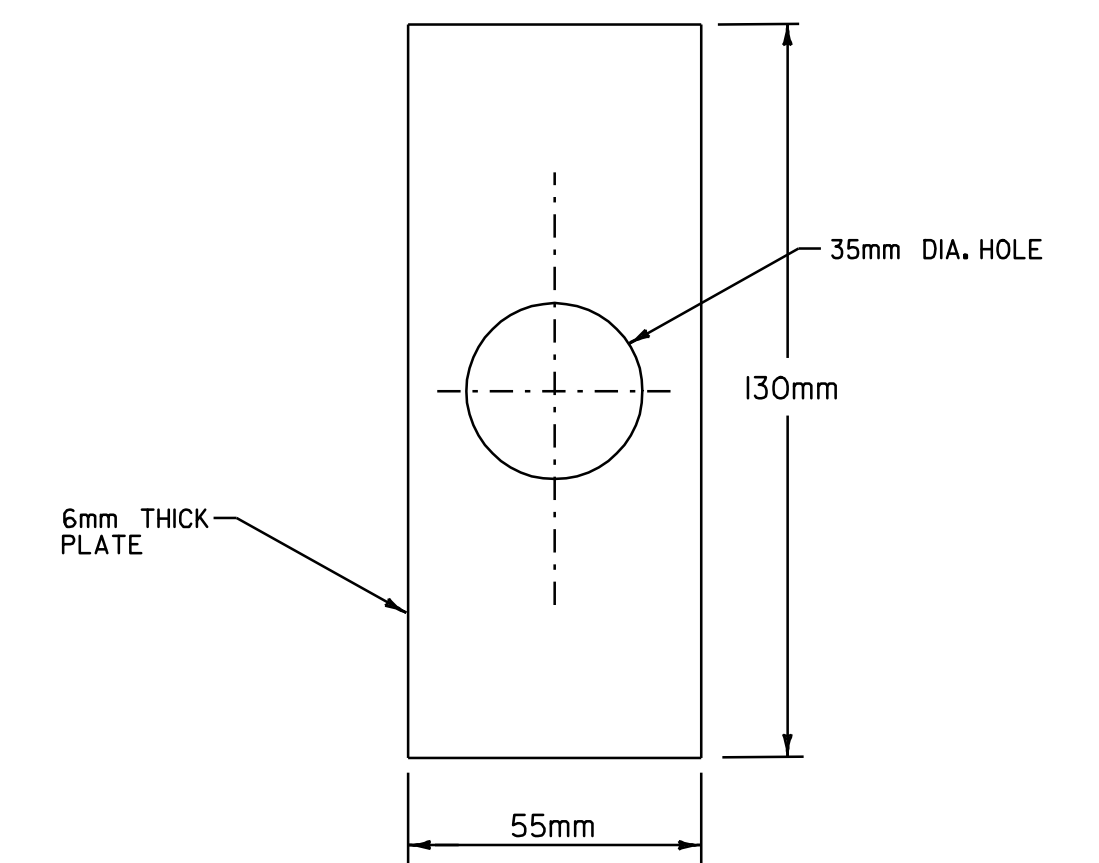
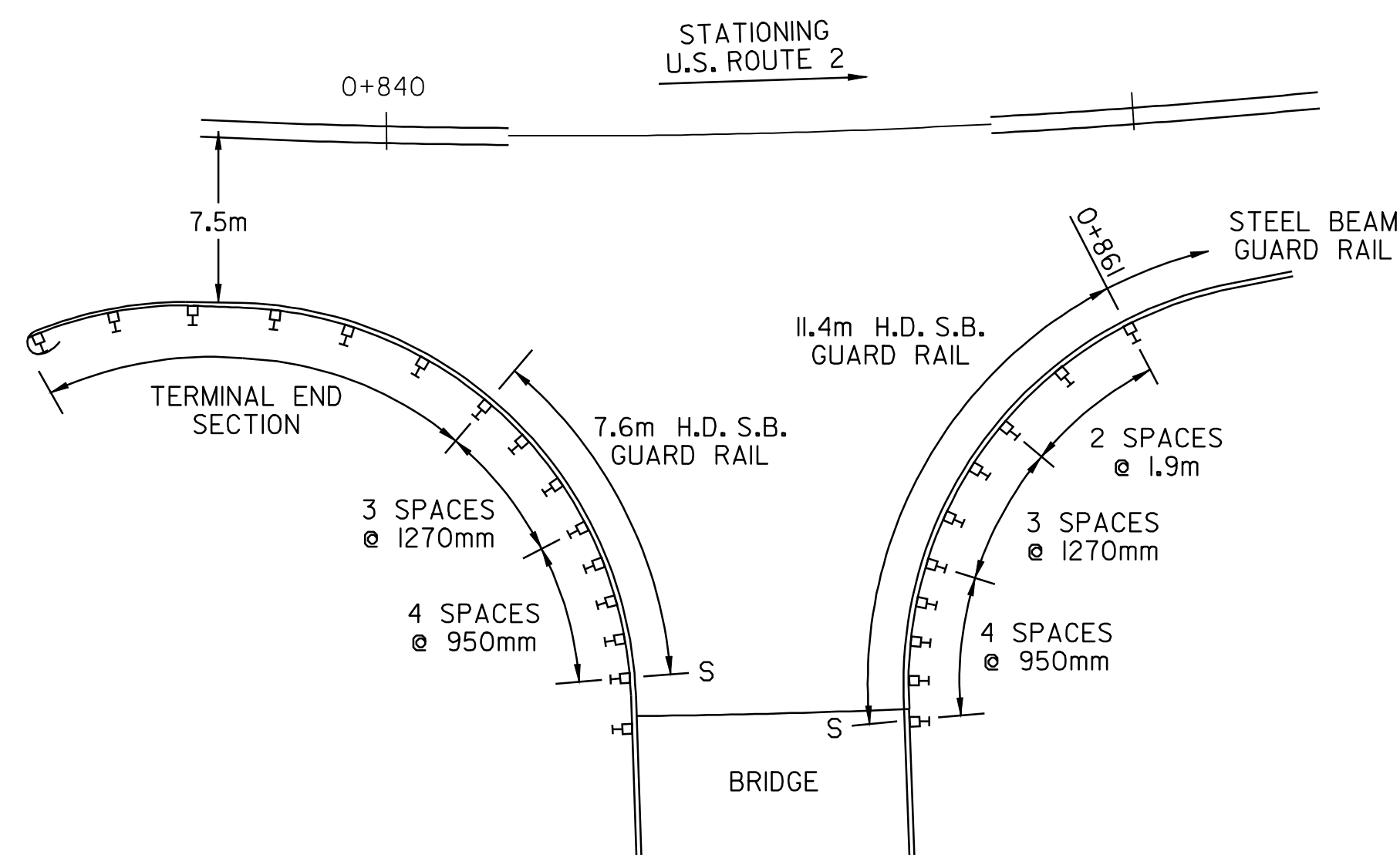


PLATE WASHER DETAIL



MARSHFIELD - TH #60 BRIDGE
STA 0+849 = MM 0.528

NOTE: MAINTAIN EXISTING RADII ALONG TOWN HIGHWAY



**BRIDGE
 DETAIL
 SHEET
 #2**

DESIGNED BY BCE/PJM DATE 7-02
 DRAWN BY C.E.A., INC. DATE 7-02
 DESIGN FILE NO. /pave/98b090/pb090.dgn
 PRF FILE pb090b02.1 DATE PLOTTED 09-MAY-2008
 PROJ. NAME: **MARSHFIELD - CABOT**
 PROJ. NO.: **NH 2104(1)S**
 SHEET **53** OF **60** SHEETS