

TEMPORARY AND DURABLE 100m YELLOW LINE
 STA 11+800 TO 12+200
 SOLID LT&RT

TEMPORARY AND DURABLE 100m WHITE LINE
 STA 11+800 TO 12+200
 SOLID LT&RT
 STA 11+800 TO 12+200
 DASHED RT

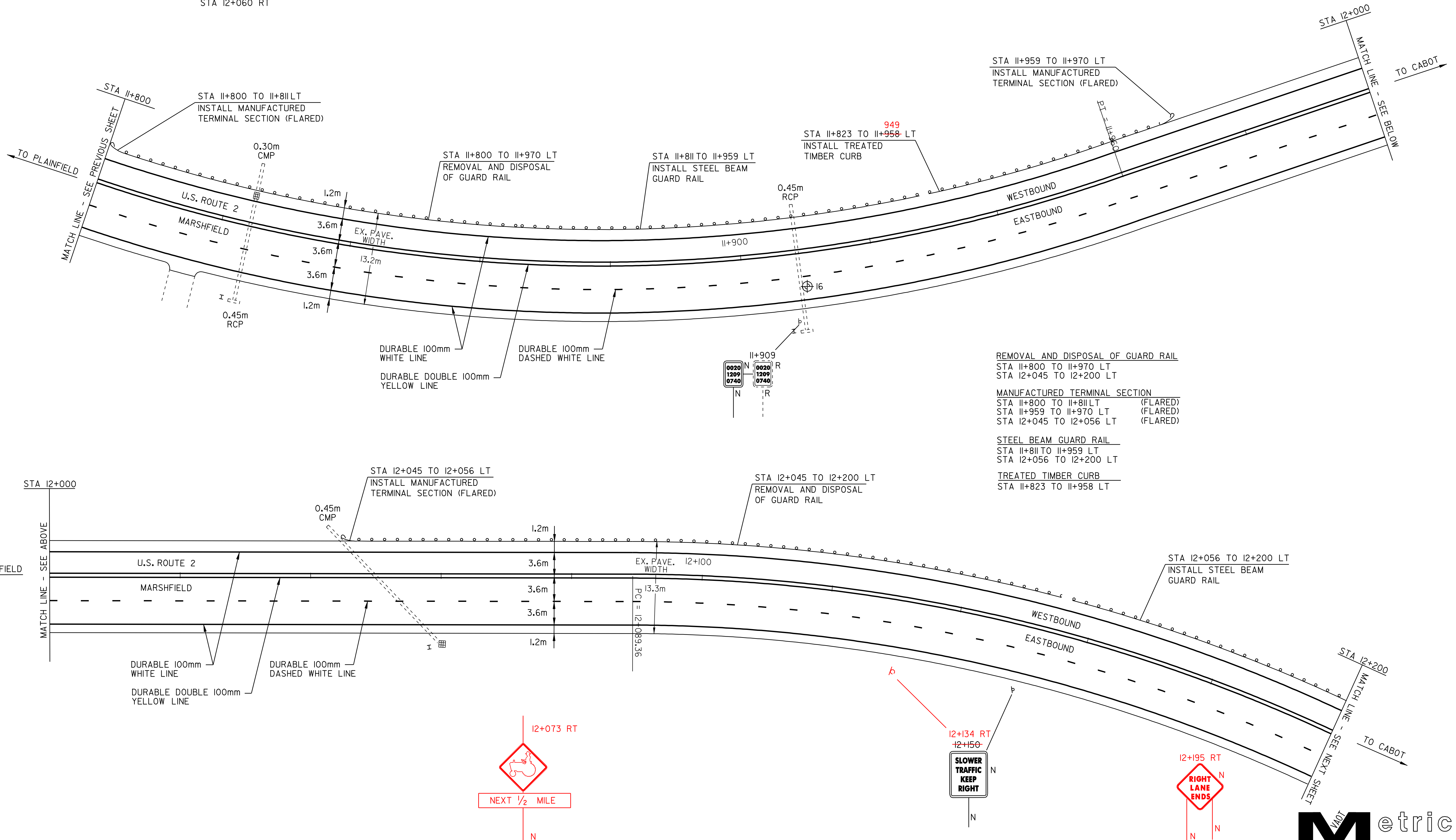
REMOVING SIGNS
 1

REHABILITATION OF D.I.'S, C.B.'S OR M.H.'S

STA 11+823 LT
 STA 12+060 RT

YIELDING MARKER POST

STA 11+824 RT
 STA 11+910 RT
 STA 12+060 RT



REMOVAL AND DISPOSAL OF GUARD RAIL

STA 11+800 TO 11+970 LT
 STA 12+045 TO 12+200 LT

MANUFACTURED TERMINAL SECTION

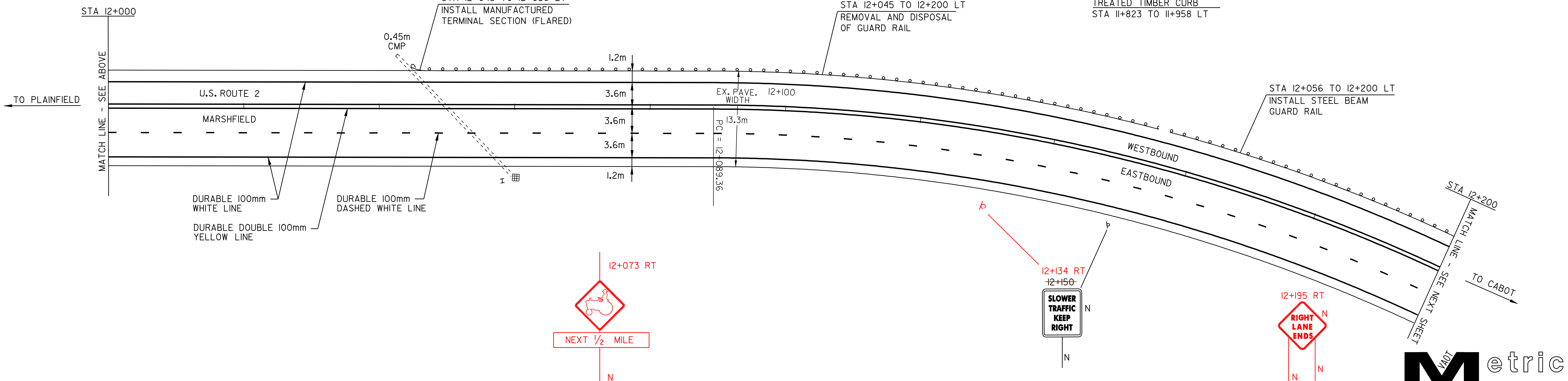
STA 11+800 TO 11+811 LT (FLARED)
 STA 11+959 TO 11+970 LT (FLARED)
 STA 12+045 TO 12+056 LT (FLARED)

STEEL BEAM GUARD RAIL

STA 11+811 TO 11+959 LT
 STA 12+056 TO 12+200 LT

TREATED TIMBER CURB

STA 11+823 TO 11+958 LT



#	TOTAL DEPTH (mm)	SOLID CORE	COMMENTS
16	165	YES	TRUCK LANE

NOTE:
 - NO PCC UNDER ANY CORES
 - NO CORES OVER ASPHALTED (UNLESS NOTED)
 - NO SHOULDER CORES

PAVING PROJECT LAYOUT #13

DESIGNED BY BCE/PJM DATE 7-02
 DRAWN BY C.E.A., INC. DATE 7-02
 DESIGN FILE NO. /pave/98b090/pb090.dgn
 PRF FILE pb090pl3.1 DATE PLOTTED 09-MAY-2008 10
 PROJ. NAME **MARSHFIELD - CABOT**
 PROJ. NO. **NH 2104(1)S**
 SHEET **23** OF **60** SHEETS