

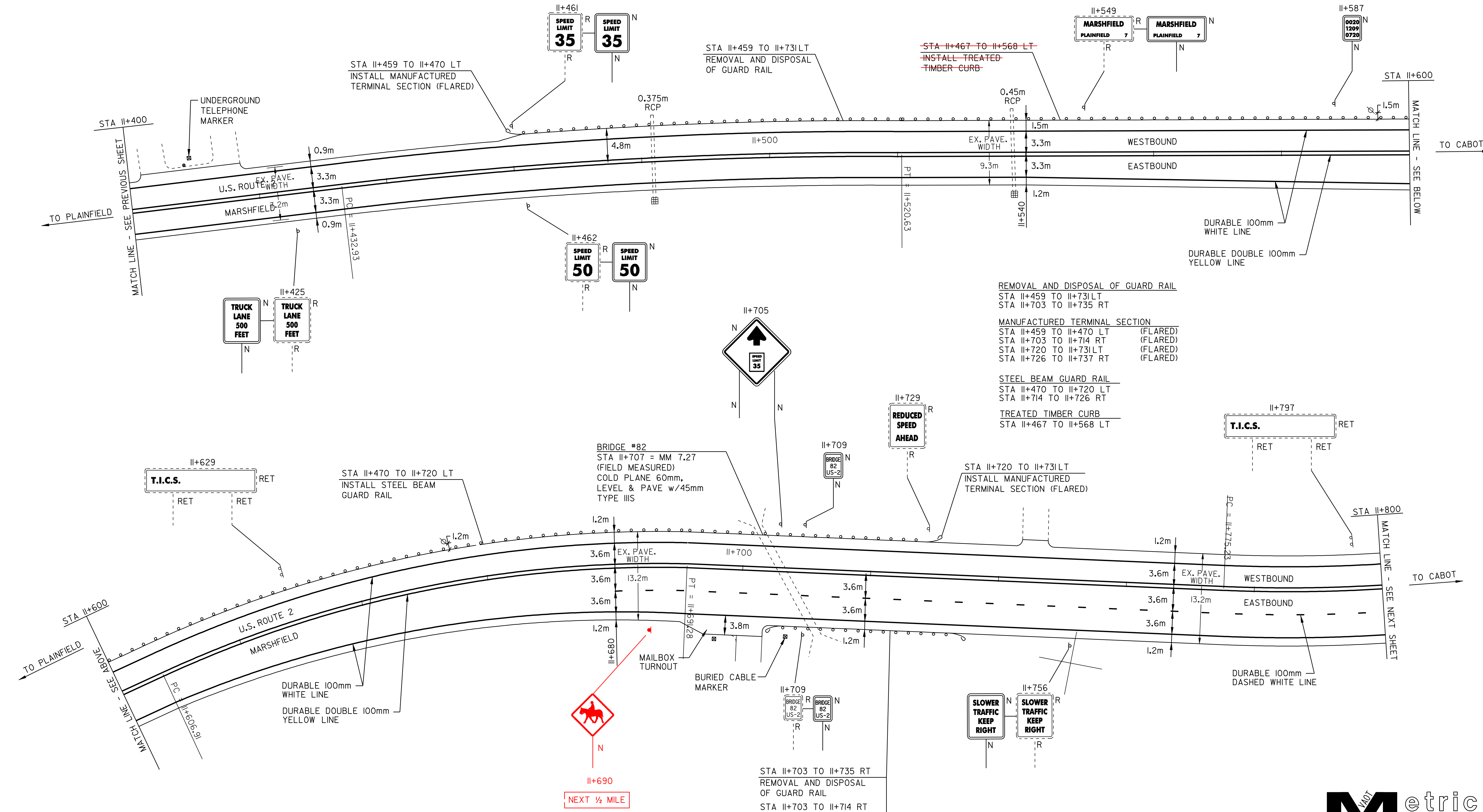
TEMPORARY AND DURABLE 100m YELLOW LINE
 STA II+400 TO II+800
 SOLID LT&RT

TEMPORARY AND DURABLE 100m WHITE LINE
 STA II+400 TO II+800
 STA II+680 TO II+800
 SOLID LT&RT
 DASHED RT

REMOVING SIGNS
 7

REHABILITATION OF D.I.'S, C.B.'S OR M.H.'S

STA II+483 RT
 STA II+538 RT



- REMOVAL AND DISPOSAL OF GUARD RAIL
 STA II+459 TO II+731 LT
 STA II+703 TO II+735 RT
- MANUFACTURED TERMINAL SECTION
 STA II+459 TO II+470 LT (FLARED)
 STA II+703 TO II+714 RT (FLARED)
 STA II+720 TO II+731 LT (FLARED)
 STA II+726 TO II+737 RT (FLARED)
- STEEL BEAM GUARD RAIL
 STA II+470 TO II+720 LT
 STA II+714 TO II+726 RT
- TREATED TIMBER CURB
 STA II+467 TO II+568 LT

- STA II+703 TO II+735 RT
 REMOVAL AND DISPOSAL
 OF GUARD RAIL
- STA II+703 TO II+714 RT
 INSTALL MANUFACTURED
 TERMINAL SECTION (FLARED)
- STA II+714 TO II+726 RT
 INSTALL STEEL BEAM
 GUARD RAIL
- STA II+726 TO II+737 RT
 INSTALL MANUFACTURED
 TERMINAL SECTION (FLARED)



PAVING PROJECT LAYOUT #12

DESIGNED BY	BCE/PJM	DATE	7-02
DRAWN BY	C.E.A., INC.	DATE	7-02
DESIGN FILE NO.	/pave/98b090/pb090.dgn		
PRF FILE	pb090pl2.i	DATE PLOTTED	09-MAY-2008 10
PROJ. NAME	MARSHFIELD - CABOT		
PROJ. NO.	NH 2104(1)S		
SHEET	22	OF	60 SHEETS