

**TEMPORARY AND DURABLE 100m YELLOW LINE**

STA II+000 TO II+400 SOLID LT&RT  
(WITH CENTERLINE BREAKS FOR TOWN HIGHWAYS)

**TEMPORARY AND DURABLE 100m WHITE LINE**

STA II+000 TO II+400 SOLID LT&RT  
(WITH EDGE LINE BREAKS FOR TOWN HIGHWAYS)

**YIELDING MARKER POST REMOVING SIGNS**

STA II+178 LT 14  
STA II+273 RT

**CHANGE ELEVATION OF SEWER MANHOLE**

STA II+270 RT (PAVED OVER)

**REHABILITATION OF D.J.'S, C.B.'S OR M.H.'S**

STA II+125 LT  
STA II+175 RT  
STA II+197 RT

**STA II+003 TO II+011LT**

REMOVAL AND DISPOSAL OF GUARD RAIL

**STA II+003 LT**

INSTALL ANCHOR FOR GUARD RAIL

**STA II+003 TO II+007 LT**

INSTALL STEEL BEAM GUARD RAIL

**STA II+007 TO II+011LT**

INSTALL G.R. APPROACH SECTION - TYPE II

**STA II+011 TO II+026 LT**

RETAIN EXISTING BOX BEAM BRIDGE RAIL

**STA II+026 TO II+041LT**

REMOVAL AND DISPOSAL OF GUARD RAIL

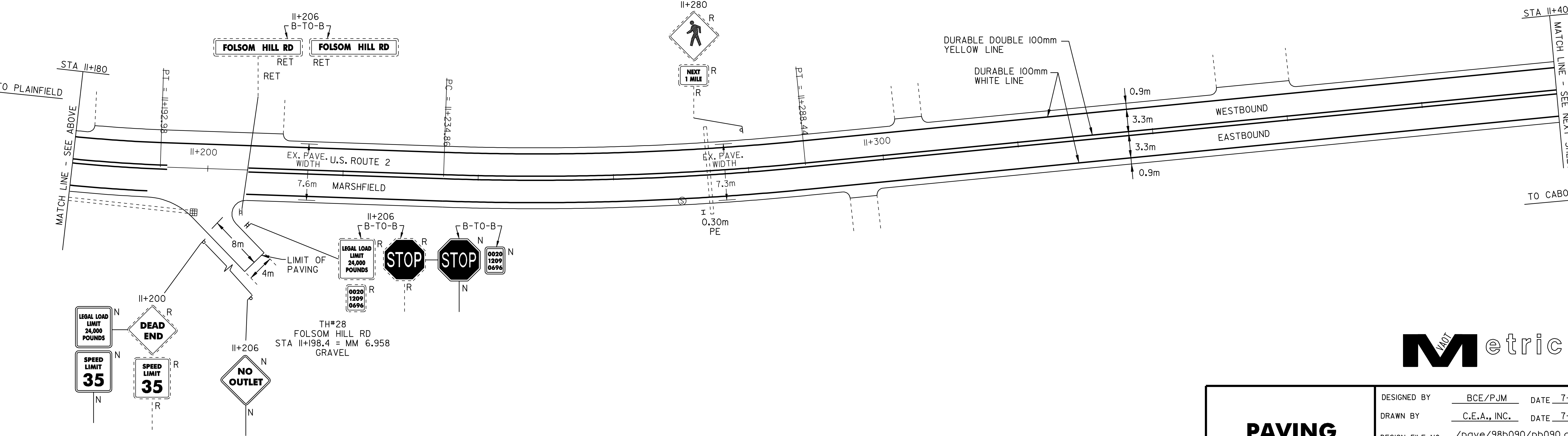
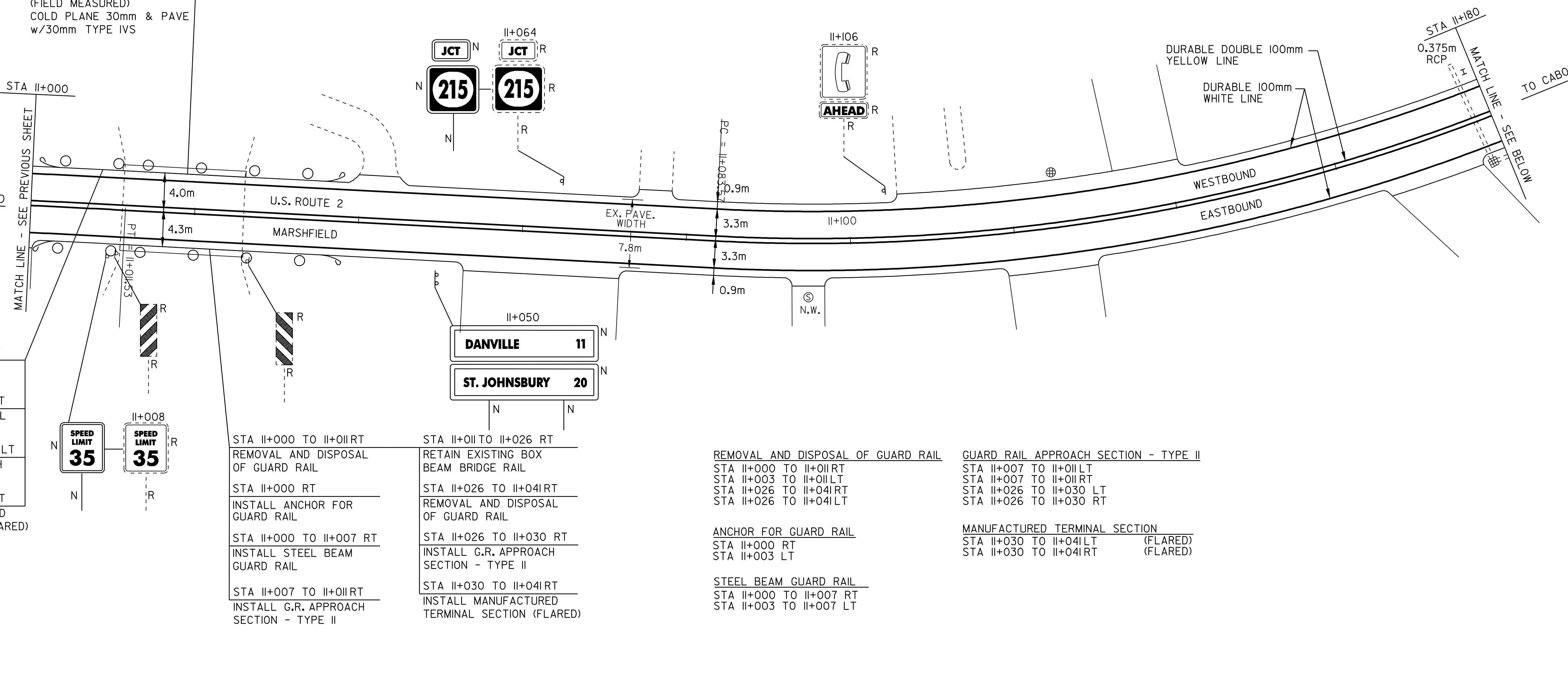
**STA II+026 TO II+030 LT**

INSTALL G.R. APPROACH SECTION - TYPE II

**STA II+030 TO II+041LT**

INSTALL MANUFACTURED TERMINAL SECTION (FLARED)

**BRIDGE #81**  
STA II+018 = MM 6.85  
(FIELD MEASURED)  
COLD PLANE 30mm & PAVE w/30mm TYPE IVS



<h2>PAVING PROJECT LAYOUT #11</h2>	DESIGNED BY	BCE/PJM	DATE	7-02
	DRAWN BY	C.E.A., INC.	DATE	7-02
	DESIGN FILE NO.	/pave/98b090/pb090.dgn		
	PRF FILE	pb090pl1.i	DATE PLOTTED	09-MAY-2008 10
	PROJ. NAME	MARSHFIELD - CABOT		
PROJ. NO.	NH 2104(1)S			
SHEET	21	OF	60	SHEETS