

TEMPORARY AND DURABLE 100m YELLOW LINE  
 STA 7+850 TO 9+055 SOLID LT&RT  
 STA 9+055 TO 9+100 SOLID LT & DASHED RT  
 (WITH CENTERLINE BREAKS FOR TOWN HIGHWAYS)

YIELDING MARKER POST  
 STA 8+110 LT  
 STA 8+182 LT  
 STA 8+491LT&RT  
 STA 8+943 LT  
 STA 9+095 LT

REMOVING SIGNS  
 II

REMOVAL AND DISPOSAL OF GUARD RAIL  
 STA 7+895 TO 8+127 RT  
 STA 8+750 TO 8+780 LT  
 STA 8+750 TO 8+780 RT  
 STA 9+040 TO 9+042 RT  
 STA 9+046 TO 9+048 RT

STEEL BEAM GUARD RAIL  
 STA 8+759 TO 8+771LT  
 STA 8+761 TO 8+772 RT

STEEL BEAM GUARD RAIL W/2.4m POSTS (MOD.)  
 STA 7+985 TO 8+116 RT  
 STA 8+852 TO 9+038 RT  
 STA 9+050 TO 9+100 RT

ANCHOR FOR GUARD RAIL  
 STA 7+895 RT  
 STA 7+920 RT  
 STA 9+034 RT  
 STA 9+042 RT  
 STA 9+046 RT  
 STA 9+054 RT

TEMPORARY AND DURABLE 100m WHITE LINE  
 STA 7+850 TO 9+100 SOLID LT&RT  
 (WITH EDGELINE BREAKS FOR TOWN HIGHWAYS)

REHABILITATION OF D.I.'S, C.B.'S OR M.H.'S  
 STA 8+944 LT

REMOVAL AND DISPOSAL OF GUIDE POSTS  
 STA 8+728 TO 8+732 RT - 2

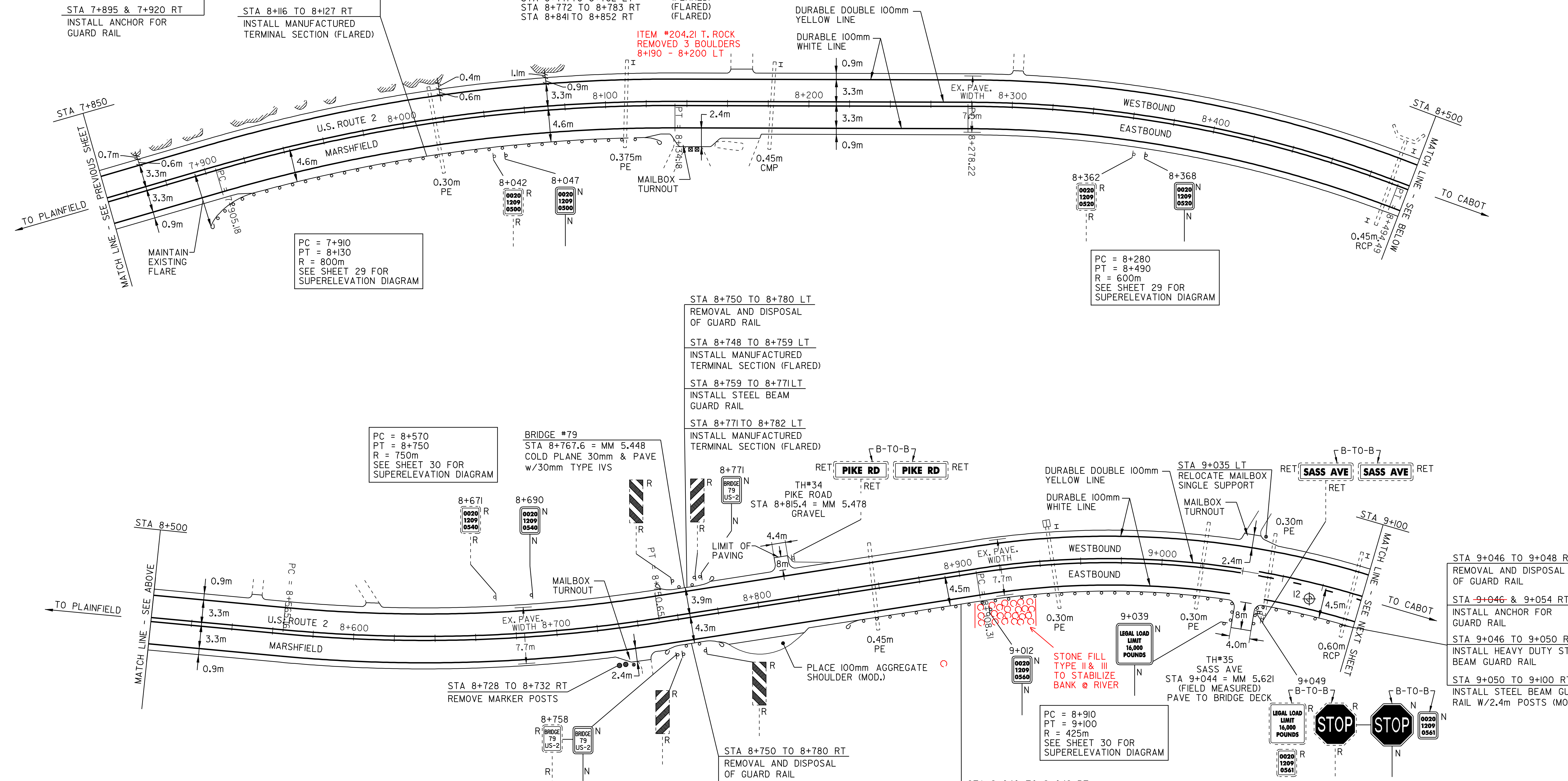
HEAVY DUTY S.B. GUARD RAIL  
 STA 9+038 TO 9+042 RT  
 STA 9+046 TO 9+050 RT

RELOCATED MAILBOX, SINGLE SUPPORT  
 STA 9+035 LT

STA 7+895 TO 8+127 RT  
 REMOVAL AND DISPOSAL  
 OF GUARD RAIL  
 STA 7+895 & 7+920 RT  
 INSTALL ANCHOR FOR  
 GUARD RAIL

STA 7+895 TO 8+116 RT  
 INSTALL STEEL BEAM GUARD  
 RAIL W/2.4m POSTS (MOD.)  
 STA 8+116 TO 8+127 RT  
 INSTALL MANUFACTURED  
 TERMINAL SECTION (FLARED)

MANUFACTURED TERMINAL SECTION  
 STA 8+116 TO 8+127 RT (FLARED)  
 STA 8+748 TO 8+759 LT (FLARED)  
 STA 8+750 TO 8+761 RT (FLARED)  
 STA 8+771 TO 8+782 LT (FLARED)  
 STA 8+772 TO 8+783 RT (FLARED)  
 STA 8+841 TO 8+852 RT (FLARED)



PAVEMENT CORES - ⊕

#	TOTAL DEPTH (mm)	SOLID CORE	COMMENTS
12	330	NO	BROKE UP

NOTE:  
 - NO PCC UNDER ANY CORES  
 - NO CORES OVER ASPHALTED (UNLESS NOTED)  
 - NO SHOULDER CORES

STA 8+750 TO 8+780 LT  
 REMOVAL AND DISPOSAL  
 OF GUARD RAIL

STA 8+748 TO 8+759 LT  
 INSTALL MANUFACTURED  
 TERMINAL SECTION (FLARED)

STA 8+759 TO 8+771LT  
 INSTALL STEEL BEAM  
 GUARD RAIL

STA 8+771 TO 8+782 LT  
 INSTALL MANUFACTURED  
 TERMINAL SECTION (FLARED)

PC = 8+570  
 PT = 8+750  
 R = 750m  
 SEE SHEET 30 FOR  
 SUPERELEVATION DIAGRAM

BRIDGE #79  
 STA 8+767.6 = MM 5.448  
 COLD PLANE 30mm & PAVE  
 w/30mm TYPE IVS

PC = 8+910  
 PT = 9+100  
 R = 425m  
 SEE SHEET 30 FOR  
 SUPERELEVATION DIAGRAM

STA 9+040 TO 9+042 RT  
 REMOVAL AND DISPOSAL  
 OF GUARD RAIL

STA 8+841 TO 8+852 RT  
 INSTALL MANUFACTURED  
 TERMINAL SECTION (FLARED)

STA 8+852 TO 9+038 RT  
 INSTALL STEEL BEAM GUARD  
 RAIL W/2.4m POSTS (MOD.)

STA 9+038 TO 9+042 RT  
 INSTALL HEAVY DUTY STEEL  
 BEAM GUARD RAIL

STA 9+034 & 9+042 RT  
 INSTALL ANCHOR FOR  
 GUARD RAIL

STA 9+046 TO 9+048 RT  
 REMOVAL AND DISPOSAL  
 OF GUARD RAIL

STA 9+046 & 9+054 RT  
 INSTALL ANCHOR FOR  
 GUARD RAIL

STA 9+046 TO 9+050 RT  
 INSTALL HEAVY DUTY STEEL  
 BEAM GUARD RAIL

STA 9+050 TO 9+100 RT  
 INSTALL STEEL BEAM GUARD  
 RAIL W/2.4m POSTS (MOD.)



# PAVING PROJECT LAYOUT #7

DESIGNED BY BCE/PJM DATE 7-02  
 DRAWN BY C.E.A., INC. DATE 7-02  
 DESIGN FILE NO. /pave/98b090/pb090.dgn  
 PRF FILE pb090p07.i DATE PLOTTED 09-MAY-2008 10  
 PROJ. NAME **MARSHFIELD - CABOT**  
 PROJ. NO. **NH 2104(1)S**  
 SHEET **17** OF **60** SHEETS