

TEMPORARY AND DURABLE 100m YELLOW LINE
 STA 5+400 TO 6+600 SOLID LT&RT
 (WITH CENTERLINE BREAKS FOR TOWN HIGHWAYS)

TEMPORARY AND DURABLE 100m WHITE LINE
 STA 5+400 TO 6+600 SOLID LT&RT
 (WITH EDGELINE BREAKS FOR TOWN HIGHWAYS)

REMOVING SIGNS
 II

YIELDING MARKER POST
 STA 5+836 LT
 STA 6+165 LT&RT
 STA 6+217 LT
 STA 6+250 LT&RT
 STA 6+550 RT

REMOVAL AND DISPOSAL OF GUARD RAIL
 STA 5+926 TO 6+002 LT
 STA 5+927 TO 6+004 RT

STEEL BEAM GUARD RAIL
 STA 5+937 TO 5+991LT
 STA 5+938 TO 5+993 RT
 STA 6+247 TO 6+308 LT

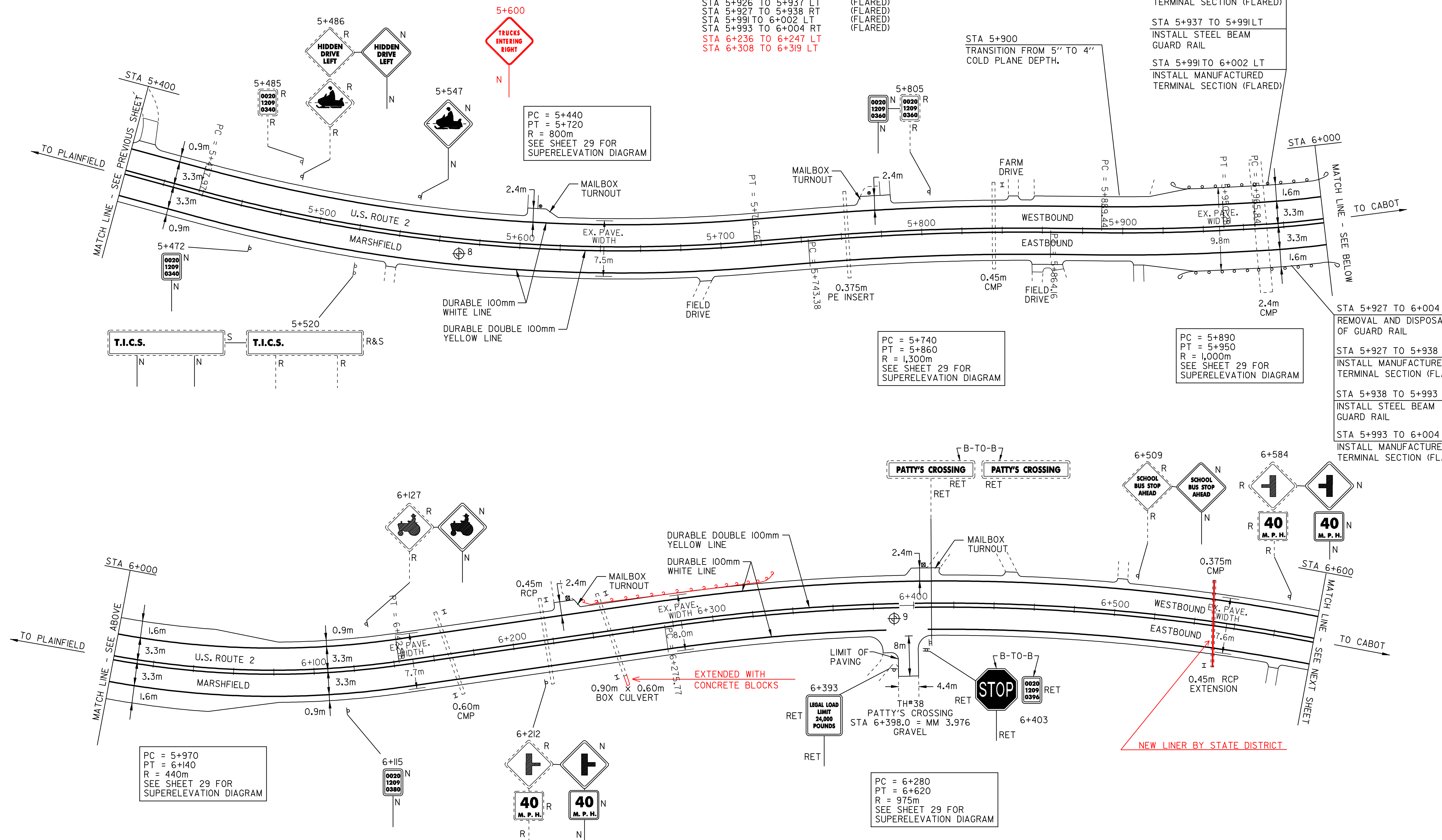
STA 5+926 TO 6+002 LT
 REMOVAL AND DISPOSAL
 OF GUARD RAIL

 STA 5+926 TO 5+937 LT
 INSTALL MANUFACTURED
 TERMINAL SECTION (FLARED)

 STA 5+937 TO 5+991LT
 INSTALL STEEL BEAM
 GUARD RAIL

 STA 5+991 TO 6+002 LT
 INSTALL MANUFACTURED
 TERMINAL SECTION (FLARED)

MANUFACTURED TERMINAL SECTION
 STA 5+926 TO 5+937 LT (FLARED)
 STA 5+927 TO 5+938 RT (FLARED)
 STA 5+991 TO 6+002 LT (FLARED)
 STA 5+993 TO 6+004 RT (FLARED)
 STA 6+236 TO 6+247 LT
 STA 6+308 TO 6+319 LT



PAVEMENT CORES - ⊕

#	TOTAL DEPTH (mm)	SOLID CORE	COMMENTS
8	280	NO	AREA OF FROST HEAVE
9	255	YES	

NOTE:
 - NO PCC UNDER ANY CORES
 - NO CORES OVER ASPHALTED (UNLESS NOTED)
 - NO SHOULDER CORES



PAVING PROJECT LAYOUT #5

DESIGNED BY BCE/PJM DATE 7-02
 DRAWN BY C.E.A., INC. DATE 7-02
 DESIGN FILE NO. /pave/98b090/pb090.dgn
 PRF FILE pb090p05.1 DATE PLOTTED 09-MAY-2008 10
 PROJ. NAME **MARSHFIELD - CABOT**
 PROJ. NO. **NH 2104(1)S**
 SHEET **15** OF **60** SHEETS