



- 646.404 - DURABLE 100MM WHITE LINE, POLYUREA** △
- STA 100+066.00 LT - 100+066.00 LT (SOLID)
 - STA 100+068.75 LT - 100+068.75 LT (SOLID)
 - STA 100+071.50 LT - 100+071.50 LT (SOLID)
 - STA 100+074.25 LT - 100+074.25 LT (SOLID)
 - STA 100+090.07 LT - 100+090.07 LT (SOLID)
 - STA 100+090.07 LT - 100+090.07 RT (SOLID)
 - STA 100+092.82 LT - 100+092.82 LT (SOLID)
 - STA 100+092.82 LT - 100+092.82 RT (SOLID)
 - STA 100+095.57 LT - 100+095.57 LT (SOLID)
 - STA 100+095.57 LT - 100+095.57 RT (SOLID)
 - STA 100+098.32 LT - 100+098.32 LT (SOLID)
 - STA 100+098.32 LT - 100+098.32 RT (SOLID)
 - STA 100+098.32 RT - 100+099.37 RT (SOLID, DIAG.)
 - STA 100+098.32 LT - 100+100.22 RT (SOLID, DIAG.)
 - STA 100+098.32 LT - 100+101.07 RT (SOLID, DIAG., 2)
 - STA 100+098.32 LT - 100+101.07 LT (SOLID, DIAG., 2)
 - STA 100+098.82 LT - 100+101.07 LT (SOLID, DIAG.)
 - STA 100+099.67 LT - 100+101.07 LT (SOLID, DIAG.)
 - STA 100+100.52 LT - 100+101.07 LT (SOLID, DIAG.)
 - STA 100+101.07 LT - 100+101.07 LT (SOLID)
 - STA 100+101.07 LT - 100+101.07 RT (SOLID)

- 646.406 - DURABLE 100MM WHITE LINE, RECESSED POLYUREA**
- STA 4+711.73 LT - 14+060.00 LT (SOLID)
 - STA 4+717.18 RT - 4+810.52 RT (SOLID)
 - STA 4+813.11 RT - 4+873.59 RT (SOLID)
 - STA 4+745.00 RT - 4+755.00 RT (DOTTED)
 - STA 4+755.00 RT - 4+790.00 RT (SOLID)
 - STA 40+060.00 RT - 14+037.03 LT (SOLID)
 - STA 14+039.47 LT - 14+091.73 LT (SOLID)
 - STA 14+042.00 LT - 14+072.00 LT (SOLID)
 - STA 14+072.00 LT - 14+092.75 LT (DOTTED)
 - STA 14+095.00 RT - 14+039.47 RT (SOLID)
 - STA 14+037.03 RT - 4+811.80 LT (SOLID)
 - STA 4+814.05 LT - 4+872.34 LT (SOLID)
 - STA 14+072.00 CL - 14+093.85 CL (DOTTED)

- 646.416 - DURABLE 100MM YELLOW LINE, RECESSED POLYUREA**
- STA 4+713.67 LT - 4+734.00 CL (SOLID-DOUBLE)
 - STA 4+715.02 RT - 4+734.00 CL (SOLID-DOUBLE)
 - STA 4+745.00 LT - 4+790.00 LT (SOLID-DOUBLE)
 - STA 4+814.20 CL - 4+872.87 CL (SOLID-DOUBLE)
 - STA 4+814.20 CL - 4+873.10 RT (SOLID-DOUBLE)
 - STA 40+007.00 LT - 40+060.00 LT (SOLID-DOUBLE)
 - STA 14+042.00 LT - 14+093.23 LT (SOLID-DOUBLE)

- 646.481 - DURABLE 600MM STOP BAR, TYPE I TAPE** △
- STA 4+790.00 LT - 4+790.00 RT
 - STA 4+816.00 LT - 4+816.00 LT
 - STA 40+009.00 LT - 40+009.00 LT
 - STA 14+042.00 LT - 14+042.00 LT

- 646.491 - DURABLE LETTER OR SYMBOL, TYPE I TAPE** △
- STA 4+763.16 CL (SYMBOL - LEFT ARROW)
 - STA 4+775.36 CL (LETTERS - ONLY)
 - STA 4+787.52 CL (SYMBOL - LEFT ARROW)
 - STA 40+011.44 LT (LETTERS - STOP)
 - STA 14+044.45 LT (SYMBOL - LEFT, RIGHT ARROWS)
 - STA 14+056.64 LT (LETTERS - ONLY, ONLY)
 - STA 14+068.83 LT (SYMBOL - LEFT, RIGHT ARROWS)
 - STA 100+097.03 LT (SYMBOL - HANDICAPPED)
 - STA 100+102.53 LT (SYMBOL - HANDICAPPED)

- 646.501 - DURABLE CROSSWALK MARKING, TYPE I TAPE** △
- STA 14+038.25 LT - 14+038.25 RT
 - STA 4+813.05 LT - 4+811.65 RT

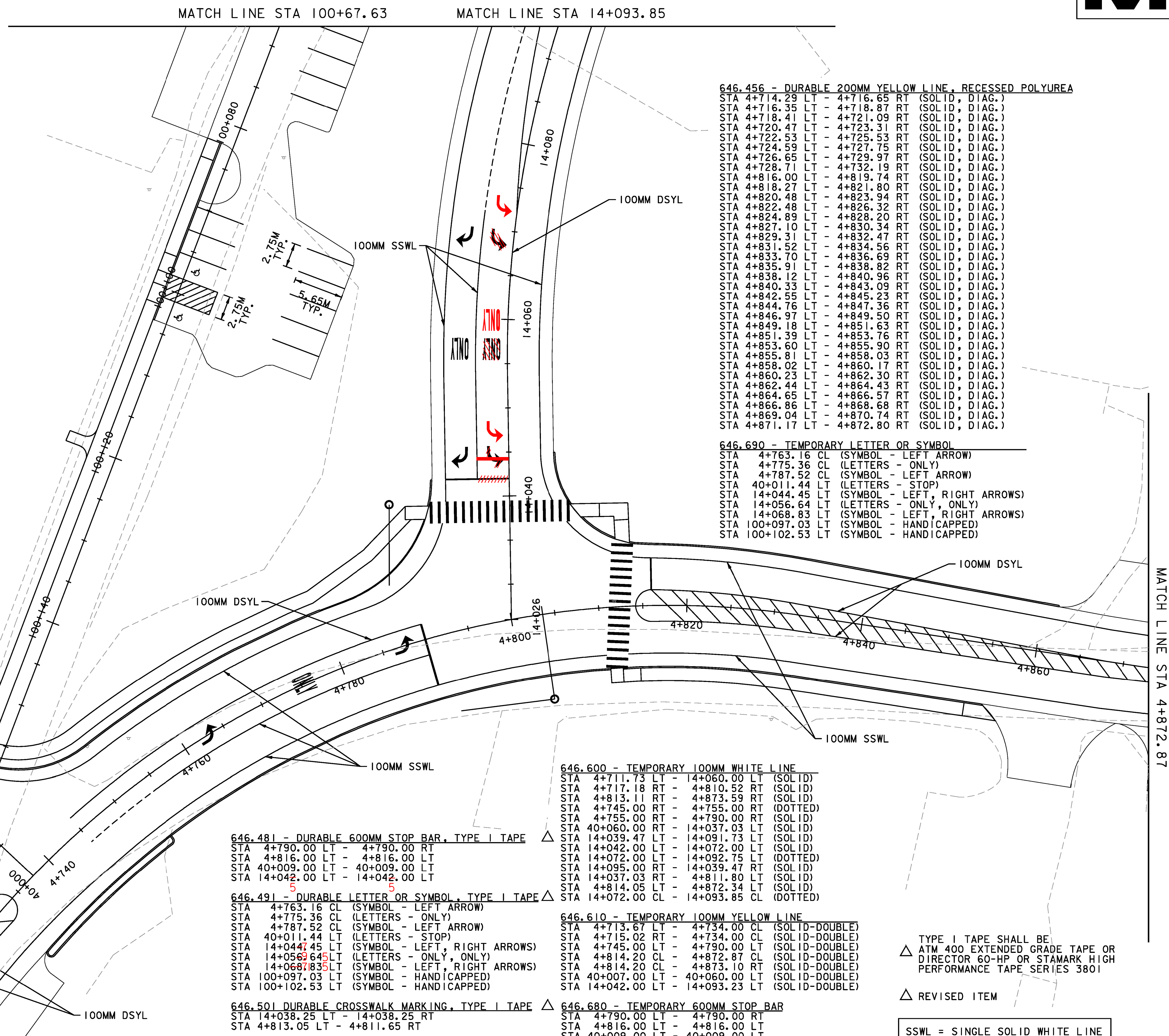
- 646.600 - TEMPORARY 100MM WHITE LINE**
- STA 4+711.73 LT - 14+060.00 LT (SOLID)
 - STA 4+717.18 RT - 4+810.52 RT (SOLID)
 - STA 4+813.11 RT - 4+873.59 RT (SOLID)
 - STA 4+745.00 RT - 4+755.00 RT (DOTTED)
 - STA 4+755.00 RT - 4+790.00 RT (SOLID)
 - STA 40+060.00 RT - 14+037.03 LT (SOLID)
 - STA 14+039.47 LT - 14+091.73 LT (SOLID)
 - STA 14+042.00 LT - 14+072.00 LT (SOLID)
 - STA 14+072.00 LT - 14+092.75 LT (DOTTED)
 - STA 14+095.00 RT - 14+039.47 RT (SOLID)
 - STA 14+037.03 RT - 4+811.80 LT (SOLID)
 - STA 4+814.05 LT - 4+872.34 LT (SOLID)
 - STA 14+072.00 CL - 14+093.85 CL (DOTTED)

- 646.610 - TEMPORARY 100MM YELLOW LINE**
- STA 4+713.67 LT - 4+734.00 CL (SOLID-DOUBLE)
 - STA 4+715.02 RT - 4+734.00 CL (SOLID-DOUBLE)
 - STA 4+745.00 LT - 4+790.00 LT (SOLID-DOUBLE)
 - STA 4+814.20 CL - 4+872.87 CL (SOLID-DOUBLE)
 - STA 4+814.20 CL - 4+873.10 RT (SOLID-DOUBLE)
 - STA 40+007.00 LT - 40+060.00 LT (SOLID-DOUBLE)
 - STA 14+042.00 LT - 14+093.23 LT (SOLID-DOUBLE)

- 646.680 - TEMPORARY 600MM STOP BAR**
- STA 4+790.00 LT - 4+790.00 RT
 - STA 4+816.00 LT - 4+816.00 LT
 - STA 40+009.00 LT - 40+009.00 LT
 - STA 14+042.00 LT - 14+042.00 LT

- 646.456 - DURABLE 200MM YELLOW LINE, RECESSED POLYUREA**
- STA 4+714.29 LT - 4+716.65 RT (SOLID, DIAG.)
 - STA 4+716.35 LT - 4+718.87 RT (SOLID, DIAG.)
 - STA 4+718.41 LT - 4+721.09 RT (SOLID, DIAG.)
 - STA 4+720.47 LT - 4+723.31 RT (SOLID, DIAG.)
 - STA 4+722.53 LT - 4+725.53 RT (SOLID, DIAG.)
 - STA 4+724.59 LT - 4+727.75 RT (SOLID, DIAG.)
 - STA 4+726.65 LT - 4+729.97 RT (SOLID, DIAG.)
 - STA 4+728.71 LT - 4+732.19 RT (SOLID, DIAG.)
 - STA 4+816.00 LT - 4+819.14 RT (SOLID, DIAG.)
 - STA 4+818.27 LT - 4+821.80 RT (SOLID, DIAG.)
 - STA 4+820.48 LT - 4+823.94 RT (SOLID, DIAG.)
 - STA 4+822.48 LT - 4+826.32 RT (SOLID, DIAG.)
 - STA 4+824.89 LT - 4+828.20 RT (SOLID, DIAG.)
 - STA 4+827.10 LT - 4+830.34 RT (SOLID, DIAG.)
 - STA 4+829.31 LT - 4+832.47 RT (SOLID, DIAG.)
 - STA 4+831.52 LT - 4+834.56 RT (SOLID, DIAG.)
 - STA 4+833.70 LT - 4+836.69 RT (SOLID, DIAG.)
 - STA 4+835.91 LT - 4+838.82 RT (SOLID, DIAG.)
 - STA 4+838.12 LT - 4+840.96 RT (SOLID, DIAG.)
 - STA 4+840.33 LT - 4+843.09 RT (SOLID, DIAG.)
 - STA 4+842.55 LT - 4+845.23 RT (SOLID, DIAG.)
 - STA 4+844.76 LT - 4+847.36 RT (SOLID, DIAG.)
 - STA 4+846.97 LT - 4+849.50 RT (SOLID, DIAG.)
 - STA 4+849.18 LT - 4+851.63 RT (SOLID, DIAG.)
 - STA 4+851.39 LT - 4+853.76 RT (SOLID, DIAG.)
 - STA 4+853.60 LT - 4+855.90 RT (SOLID, DIAG.)
 - STA 4+855.81 LT - 4+858.03 RT (SOLID, DIAG.)
 - STA 4+858.02 LT - 4+860.17 RT (SOLID, DIAG.)
 - STA 4+860.23 LT - 4+862.30 RT (SOLID, DIAG.)
 - STA 4+862.44 LT - 4+864.43 RT (SOLID, DIAG.)
 - STA 4+864.65 LT - 4+866.57 RT (SOLID, DIAG.)
 - STA 4+866.86 LT - 4+868.68 RT (SOLID, DIAG.)
 - STA 4+869.04 LT - 4+870.74 RT (SOLID, DIAG.)
 - STA 4+871.17 LT - 4+872.80 RT (SOLID, DIAG.)

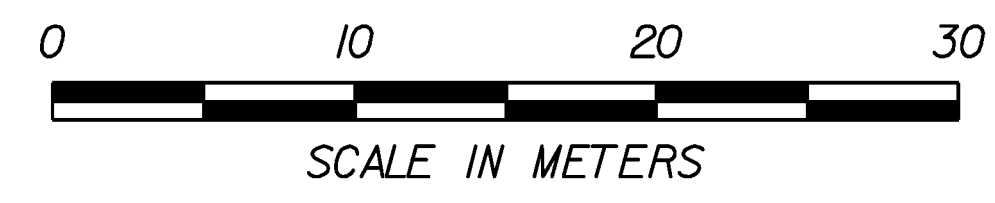
- 646.690 - TEMPORARY LETTER OR SYMBOL**
- STA 4+763.16 CL (SYMBOL - LEFT ARROW)
 - STA 4+775.36 CL (LETTERS - ONLY)
 - STA 4+787.52 CL (SYMBOL - LEFT ARROW)
 - STA 40+011.44 LT (LETTERS - STOP)
 - STA 14+044.45 LT (SYMBOL - LEFT, RIGHT ARROWS)
 - STA 14+056.64 LT (LETTERS - ONLY, ONLY)
 - STA 14+068.83 LT (SYMBOL - LEFT, RIGHT ARROWS)
 - STA 100+097.03 LT (SYMBOL - HANDICAPPED)
 - STA 100+102.53 LT (SYMBOL - HANDICAPPED)



△ TYPE I TAPE SHALL BE ATM 400 EXTENDED GRADE TAPE OR DIRECTOR 60-HP OR STAMARK HIGH PERFORMANCE TAPE SERIES 3801

△ REVISED ITEM

SSWL = SINGLE SOLID WHITE LINE
DSYL = DOUBLE SOLID YELLOW LINE



PROJECT NAME:	EAST MONTPELIER	FILE NAME:	+98b028+spmbdr.dgn	PLOT DATE:	11-MAY-2010
PROJECT NUMBER:	STPG 028-3(35)S	PROJECT LEADER:	J. SCHULTZ	DRAWN BY:	D. LYMAN
		DESIGNED BY:	J. GRUCHACZ	CHECKED BY:	J. DEVLIN
		PAVEMENT MARKING LAYOUT SHEET 2		SHEET	76 OF 142