

LIST OF MAJOR EQUIPMENT	
ITEM # 678.15 (US 2 & VT 14)	QUANTITY
MAST ARM POLES	2
POWER METER ON STANCHION	1
NEW 12" TRAFFIC SIGNAL HEADS W/ TUNNEL VISORS, DISCONNECT HANGERS & MOUNTING HARDWARE.	
ONE-WAY 3 SECTION	5
ONE-WAY 5 SECTION	2
GROUND MNT. CABINET/CONTROLLER	1
MAST ARMS	3
BACKPLATES	7
VIDEO VEHICLE DETECTION CAMERAS	3

CONTROLLER TIMING CHART								
US ROUTE 2 & VT ROUTE 14								
PHASE	US2	VT14	US2	US2				
TRAFFIC MOVEMENT	→	↓	→	←				
MINIMUM GREEN	8	8	5	8				
MAXIMUM 1 GREEN	35	13	10	19				
MAXIMUM 2 GREEN	34	14	8	20				
MAXIMUM 3 GREEN	37	11	15	16				
YELLOW CLEARANCE	4	4	4	4				
ALL RED CLEARANCE	2	2	2	2				
VEH. EXTENSION	2	2	2	2				
WALK (MAN)								7
PED CLEAR (HAND)								14

CONTROLLER TO OPERATE MAXIMUM 2 GREEN TIMINGS FROM 6:00AM-9:00AM
 CONTROLLER TO OPERATE MAXIMUM 1 GREEN TIMINGS FROM 9:00AM-3:00PM & 6:00PM-6:00AM
 CONTROLLER TO OPERATE MAXIMUM 3 GREEN TIMINGS FROM 3:00PM-6:00PM

678.15 TRAFFIC CONTROL SIGNAL SYSTEM, INTERSECTION

MAST ARM POLES
 STA 14+039.22 LT (13.62M LT) MA1
 STA 4+803.59 RT (9.73M RT) MA2

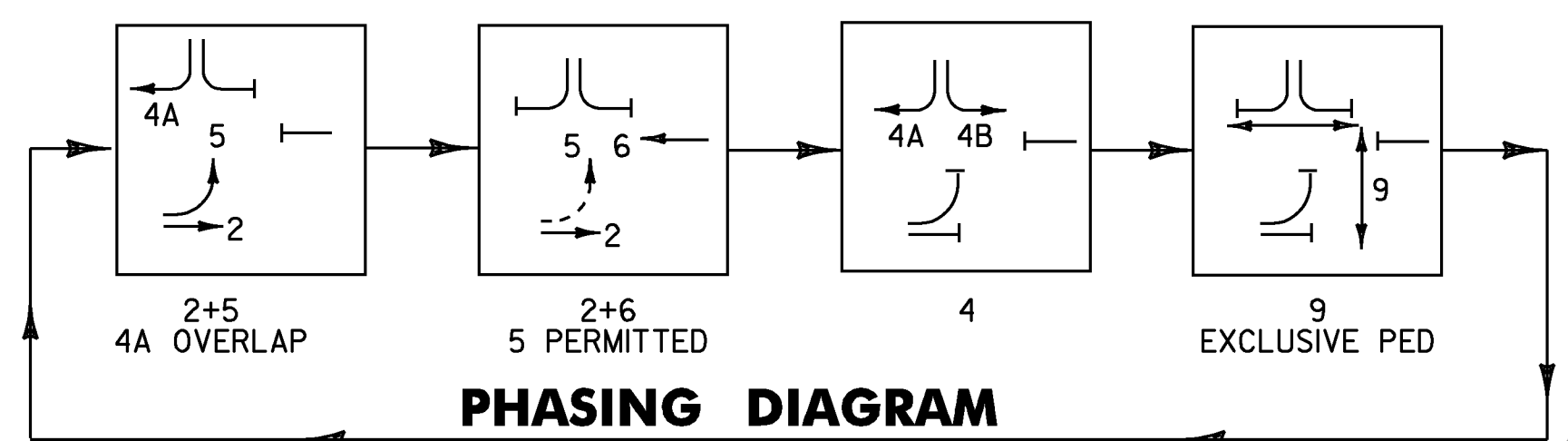
PEDESTRIAN SIGNAL POLES
 STA 14+040.00 RT (11.63M LT) P1
 STA 4+814.28 LT (10.62M LT) P2
 STA 4+810.48 RT (8.29M RT) P3

CABINET/CONTROLLER
 STA 14+047.50 RT (8.45M RT)

POWER STANCHION
 STA 14+047.50 RT (11.59M RT)

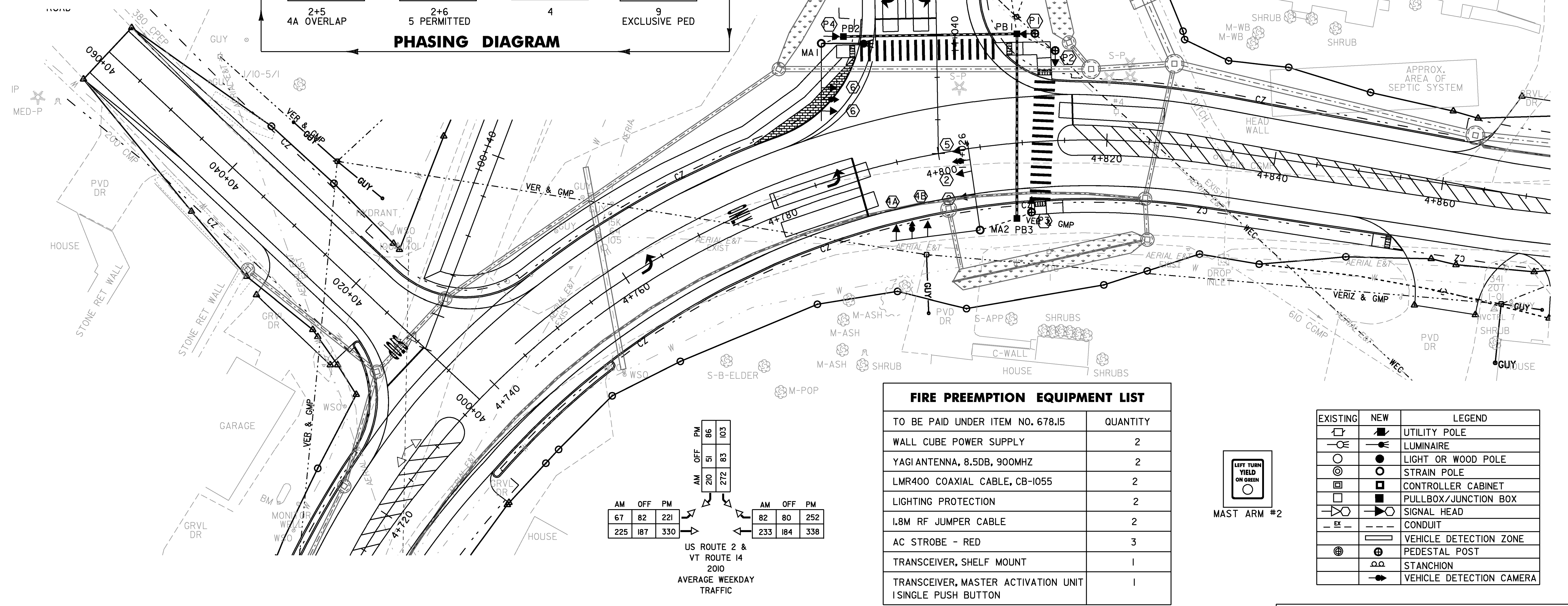
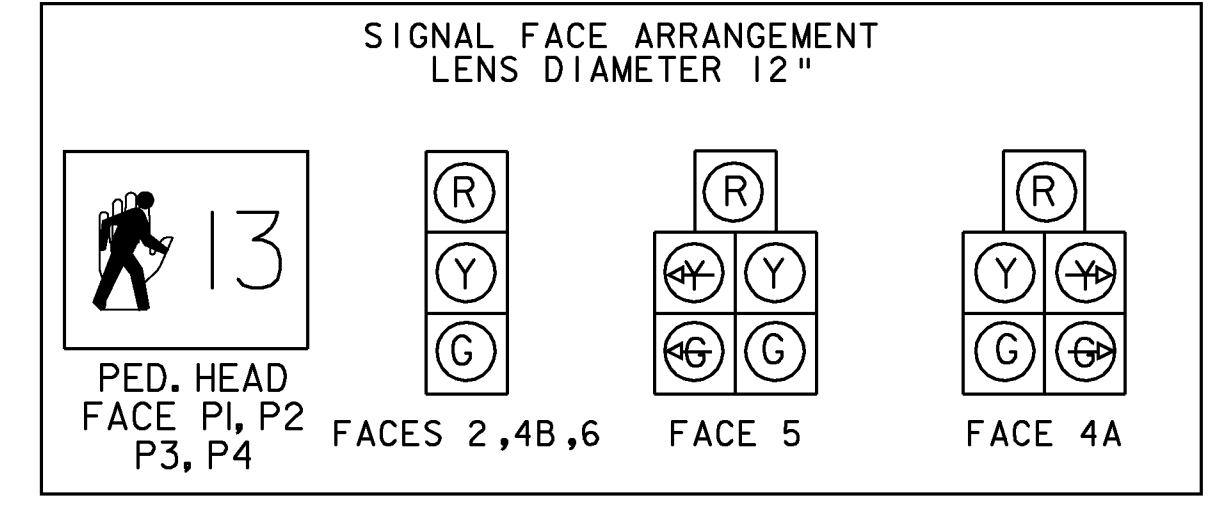
678.25 PULL BOX, STANDARD
 STA 14+040.00 RT PB1
 STA 14+040.00 LT PB2
 STA 4+808.53 RT PB3

678.30 ELECTRICAL CONDUIT SLEEVE (200MM) (PVC) (SCH 80)
 STA 14+040.00 LT - 14+040.00 RT
 STA 4+810.31 LT - 4+808.56 RT



678.23 - WIRED CONDUIT	CONDUIT SIZE	DESCRIPTION
POWER TO STANCHION	50mm	
STANCHION TO CONTROLLER	17.0M	*POWER
CONTROLLER TO PB1	19.2M (2x9.6M)	POWER/VIDEO
PB1 TO PB2	45.0M (2x22.5M)	POWER/VIDEO
MA1 TO PB2	9.4M (2x4.7M)	POWER/VIDEO
PED1 TO PB1	4.1M	POWER
PED2 TO PB1	6.9M	POWER
PB3 TO PB1	47.6M (2x23.8M)	POWER/VIDEO
PED3 TO PB3	3.9M	POWER
MA2 TO PB3	13.2M (2x6.6M)	POWER/VIDEO
SUBTOTALS	171.4 M	
ROUNDING	3.6 M	
TOTALS	175.0 M	

*-CONDUIT QUANTITY INCLUDES PVC RUN ON UTILITY POLE



FIRE PREEMPTION EQUIPMENT LIST	
TO BE PAID UNDER ITEM NO. 678.15	QUANTITY
WALL CUBE POWER SUPPLY	2
YAGI ANTENNA, 8.5DB, 900MHZ	2
LMR400 COAXIAL CABLE, CB-1055	2
LIGHTING PROTECTION	2
1.8M RF JUMPER CABLE	2
AC STROBE - RED	3
TRANSCEIVER, SHELF MOUNT	1
TRANSCEIVER, MASTER ACTIVATION UNIT SINGLE PUSH BUTTON	1

EXISTING	NEW	LEGEND
☐	☐	UTILITY POLE
○	○	LUMINAIRE
○	○	LIGHT OR WOOD POLE
○	○	STRAIN POLE
☐	☐	CONTROLLER CABINET
☐	☐	PULLBOX/JUNCTION BOX
○	○	SIGNAL HEAD
—	—	CONDUIT
⊖	⊖	VEHICLE DETECTION ZONE
⊖	⊖	PEDESTAL POST
⊖	⊖	STANCHION
⊖	⊖	VEHICLE DETECTION CAMERA

PROJECT NAME: EAST MONTPELIER
 PROJECT NUMBER: STPG 028 - 3(35)S

FILE NAME: +98b028traf.dgn PLOT DATE: 22-MAR-2010
 PROJECT LEADER: J. SCHULTZ DRAWN BY: D. LYMAN
 DESIGNED BY: J. GRUCHACZ CHECKED BY: J. DEVLIN
 TRAFFIC LAYOUT SHEET SHEET 70 OF 142

