

656.85 TREE PROTECTION
 STA 30+027.05 RT - 30+042.67 RT - 2 SMALL APPLE TREES

678.25 PULL BOX, STANDARD
 STA 100+067.40 RT

678.30 ELECTRICAL CONDUIT SLEEVE
 (200MM) (PVC) (SCH 80)
 STA 100+067.79 RT - 100+083.86 RT

679.21 LIGHT POLE BASE
 STA 100+041.50 RT (4.5M OFFSET) - LP4
 STA 100+066.00 RT (5.5M OFFSET) - LP5

679.23 BREAKAWAY FEATURE FOR LIGHT POLE
 STA 100+041.50 RT (4.5M OFFSET) - LP4
 STA 100+066.00 RT (5.5M OFFSET) - LP5

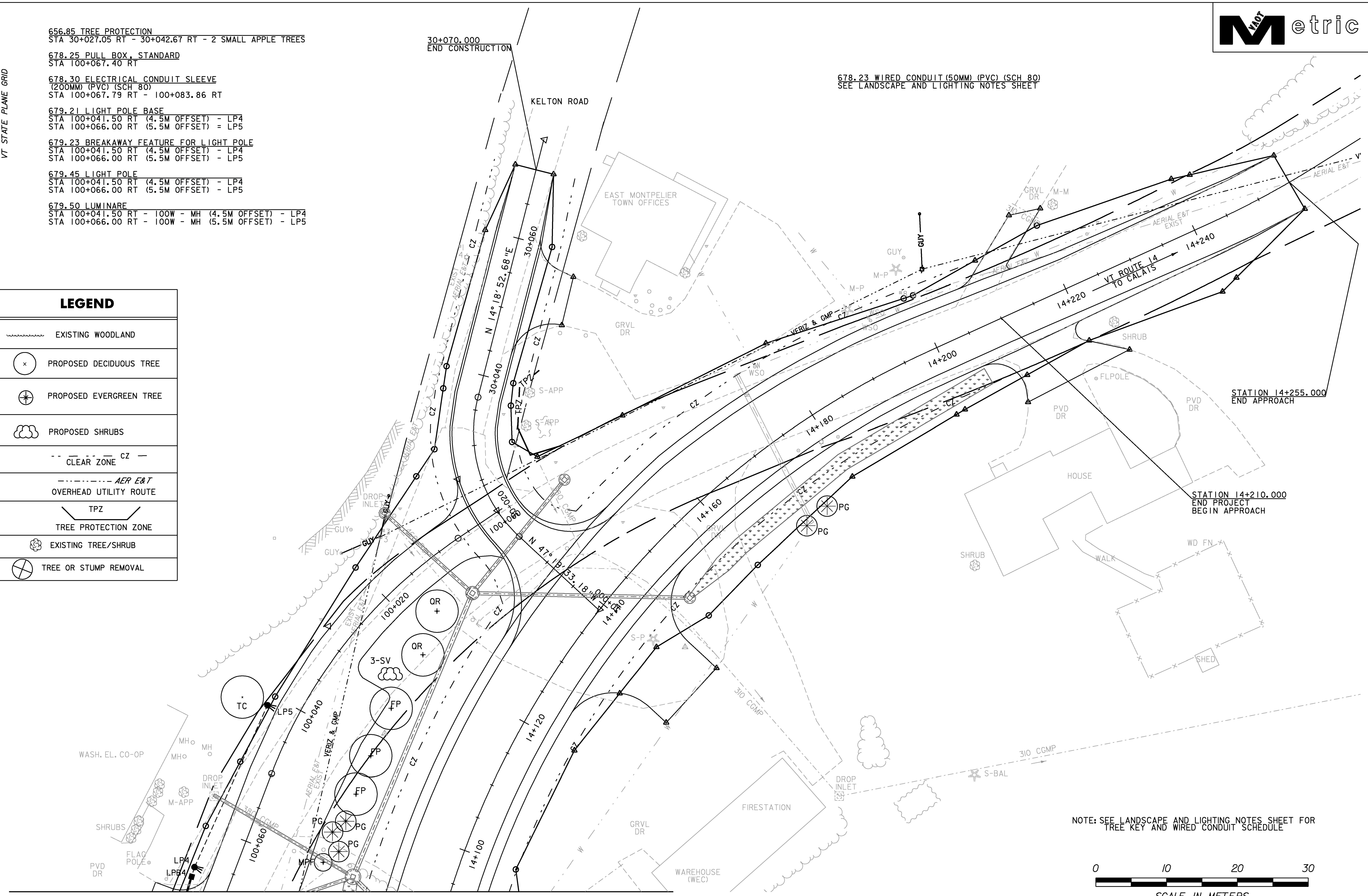
679.45 LIGHT POLE
 STA 100+041.50 RT (4.5M OFFSET) - LP4
 STA 100+066.00 RT (5.5M OFFSET) - LP5

679.50 LUMINAIRE
 STA 100+041.50 RT - 100W - MH (4.5M OFFSET) - LP4
 STA 100+066.00 RT - 100W - MH (5.5M OFFSET) - LP5

30+070.000
 END CONSTRUCTION

678.23 WIRED CONDUIT (50MM) (PVC) (SCH 80)
 SEE LANDSCAPE AND LIGHTING NOTES SHEET

LEGEND	
	EXISTING WOODLAND
	PROPOSED DECIDUOUS TREE
	PROPOSED EVERGREEN TREE
	PROPOSED SHRUBS
	CLEAR ZONE CZ
	AERIAL E&T OVERHEAD UTILITY ROUTE
	TPZ TREE PROTECTION ZONE
	EXISTING TREE/SHRUB
	TREE OR STUMP REMOVAL



MATCH LINE STA 100+67.63 MATCH LINE STA 14+093.85

NOTE: SEE LANDSCAPE AND LIGHTING NOTES SHEET FOR TREE KEY AND WIRED CONDUIT SCHEDULE



PROJECT NAME:	EAST MONTPELIER
PROJECT NUMBER:	STPG 028 - 3(35)S
FILE NAME:	+98b028landscapebdr.dgn
PROJECT LEADER:	J. SCHULTZ
DESIGNED BY:	J. GRUCHACZ
LANDSCAPE AND LIGHTING LAYOUT SHEET 4	
PLOT DATE:	22-MAR-2010
DRAWN BY:	D. LYMAN
CHECKED BY:	J. DEVLIN
LANDSCAPE AND LIGHTING LAYOUT SHEET 4	SHEET 67 OF 142