

- NOTES:**
1. THESE PLANS SHOW A CONCEPTUAL EROSION CONTROL PLAN. THE CONTRACTOR MUST SUBMIT A TEMPORARY EROSION CONTROL PLAN FOR APPROVAL.
 2. TEMPORARY EROSION CONTROL MEASURES ARE CONCEPTUALLY SHOWN. THE CONTRACTOR MAY RELOCATE TEMPORARY MEASURES TO IMPROVE EROSION CONTROL WITH APPROVAL OF THE RESIDENT ENGINEER AND ON SITE COORDINATOR. SILT FENCE SHALL NOT BE INSTALLED ACROSS CONTOURS.
 3. THE CONTRACTOR SHALL USE OTHER TEMPORARY EROSION CONTROL MEASURES AS NECESSITATED BY THE SEQUENCE OF CONSTRUCTION OR AS DIRECTED BY THE RESIDENT ENGINEER AND ON SITE COORDINATOR.
 4. REFER TO TEMPORARY EROSION CONTROL DETAIL SHEETS FOR ADDITIONAL DETAILS.

653.20 - TEMPORARY EROSION MATTING
 STA 14+089.95 LT - 14+090.59 LT
 STA 14+093.34 LT - 14+139.73 LT
 STA 14+150.27 RT - 14+208.19 RT

653.40 - INLET PROTECTION DEVICE, TYPE 1
 STA 14+091.93 LT
 STA 14+130.87 LT
 STA 14+149.00 RT
 STA 14+149.19 LT
 STA 100.012.63 RT

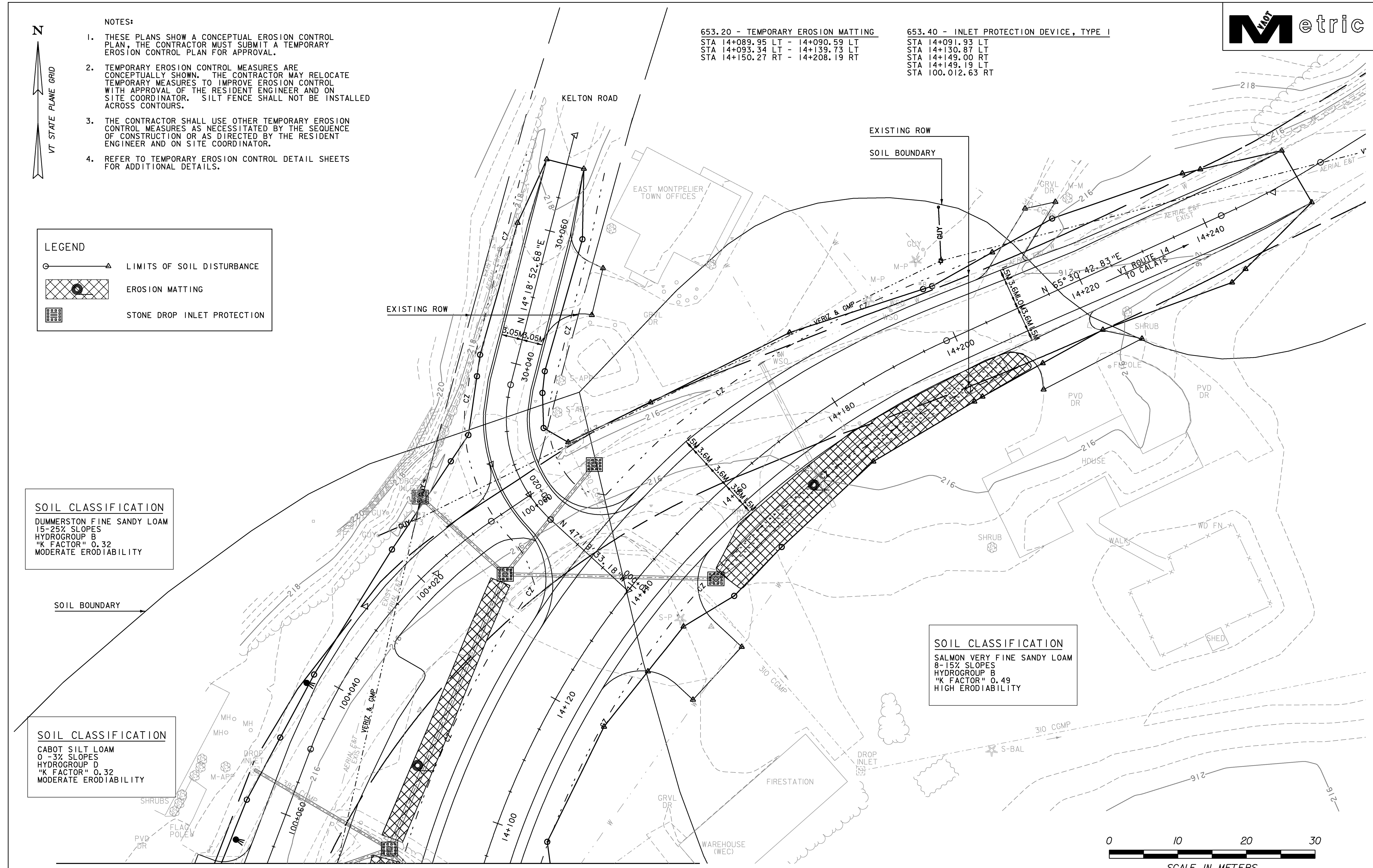
LEGEND

- LIMITS OF SOIL DISTURBANCE
- EROSION MATTING
- STONE DROP INLET PROTECTION

SOIL CLASSIFICATION
 DUMMERSTON FINE SANDY LOAM
 15-25% SLOPES
 HYDROGROUP B
 "K FACTOR" 0.32
 MODERATE ERODIABILITY

SOIL CLASSIFICATION
 CABOT SILT LOAM
 0-3% SLOPES
 HYDROGROUP D
 "K FACTOR" 0.32
 MODERATE ERODIABILITY

SOIL CLASSIFICATION
 SALMON VERY FINE SANDY LOAM
 8-15% SLOPES
 HYDROGROUP B
 "K FACTOR" 0.49
 HIGH ERODIABILITY



MATCH LINE STA 100+67.63 MATCH LINE STA 14+093.85

PROJECT NAME: EAST MONTPELIER
 PROJECT NUMBER: STPG 028 - 3(35)S
 FILE NAME: +98b028econstrucTonbdr.dgn PLOT DATE: 22-MAR-2010
 PROJECT LEADER: J. SCHULTZ DRAWN BY: J. DEVLIN
 DESIGNED BY: J. GRUCHACZ CHECKED BY: J. SCHULTZ
 EPSC CONSTRUCTION SHEET 4 SHEET 56 OF 142